

Configuration File Compare

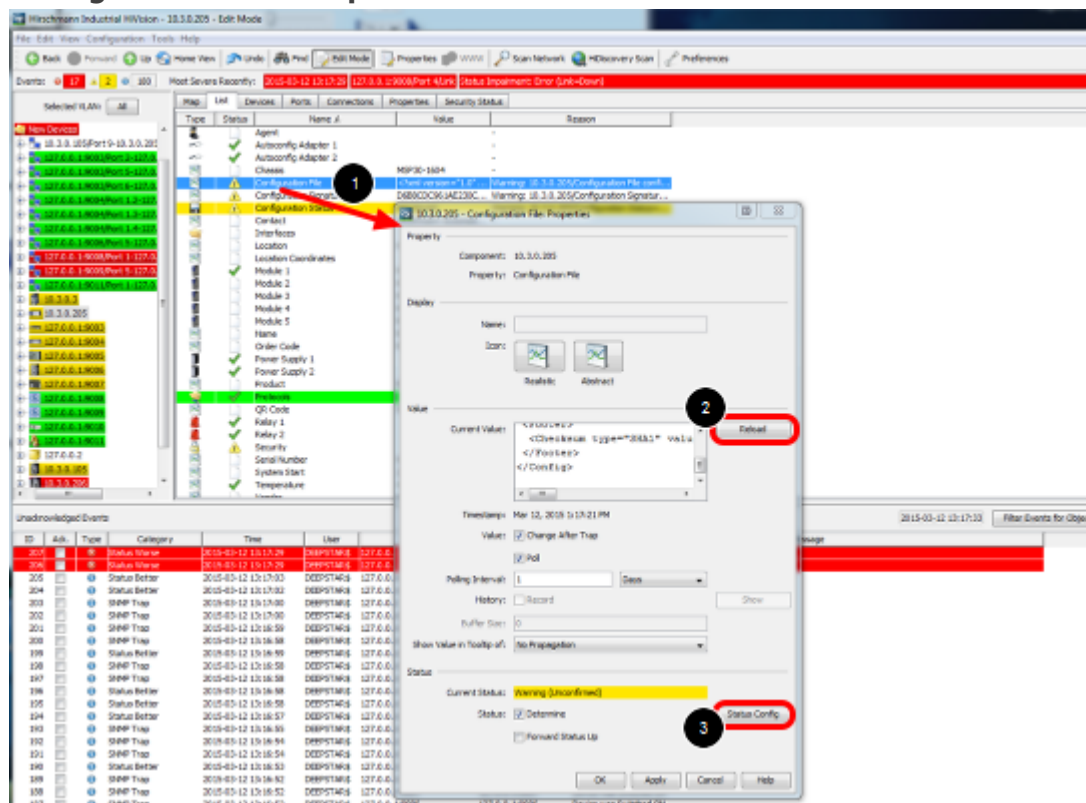
- 2018-02-21 - Industrial HiVision

As of v6.0 IHV is able to monitor the configuration file of a device (Platform4, Platform5, EAGLE, BAT and GarrettCom).

Therefor the clear text configuration (script or xml) is stored in a property. The standard polling/status configuration can be used for comparing the current configuration to the reference config.

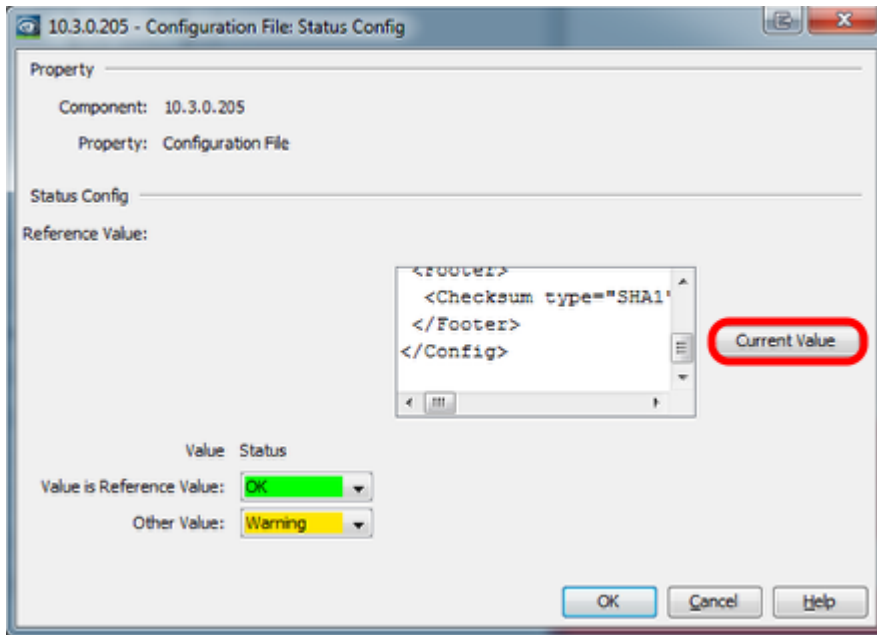
This lesson describes how to set a reference configuration and in case of configuration changes how you can display the differences.

Configuration File Properties



1. double click on the property Configuration File
2. press reload to download the current configuration from the device
3. open the status configuration

Configuration File - Status Config



In the status configuration dialog you can set the current value as reference value.

Change the configuration

Hirschmann Industrial HiView - 10.3.0.205 - Edit Mode

File Edit View Configuration Tools Help

Back Forward Up Home View Links Print Edit Mode Properties WWW Scan Network HiDiscovery Scan Preferences

Events: 0 2 1 187 Most Severe Recently: 2015-03-12 13:18:08 127.0.0.1:9000/Port 40/In Load Status Dependent Error (In Load) - 20.0, Current Value: 190.0

Selected VLAN:	All	Map	List	Devices	Ports	Connections	Properties	Security Status
10.3.0.135/Port 9-10	10.3.0.207	127.0.0.1:9000/Port 3-12	127.0.0.1:9000/Port 3-12	127.0.0.1:9000/Port 3-12	127.0.0.1:9000/Port 3-12	127.0.0.1:9000/Port 3-12	127.0.0.1:9000/Port 3-12	127.0.0.1:9000/Port 3-12

10.3.0.205 - Location Properties

Property
Component: 10.3.0.205
Property: Location

Deploy
Name:
Icon: Realistic Abstract

Value
Current Value: Hirschmann PECE

Timestamp: Mar 12, 2015 12:14:43 PM
Value: Change After Trap
 Fill
Polling Interval: 1 Minutes
History: Record
Buffer Size: 100
Show Value in Tooltip of: Device

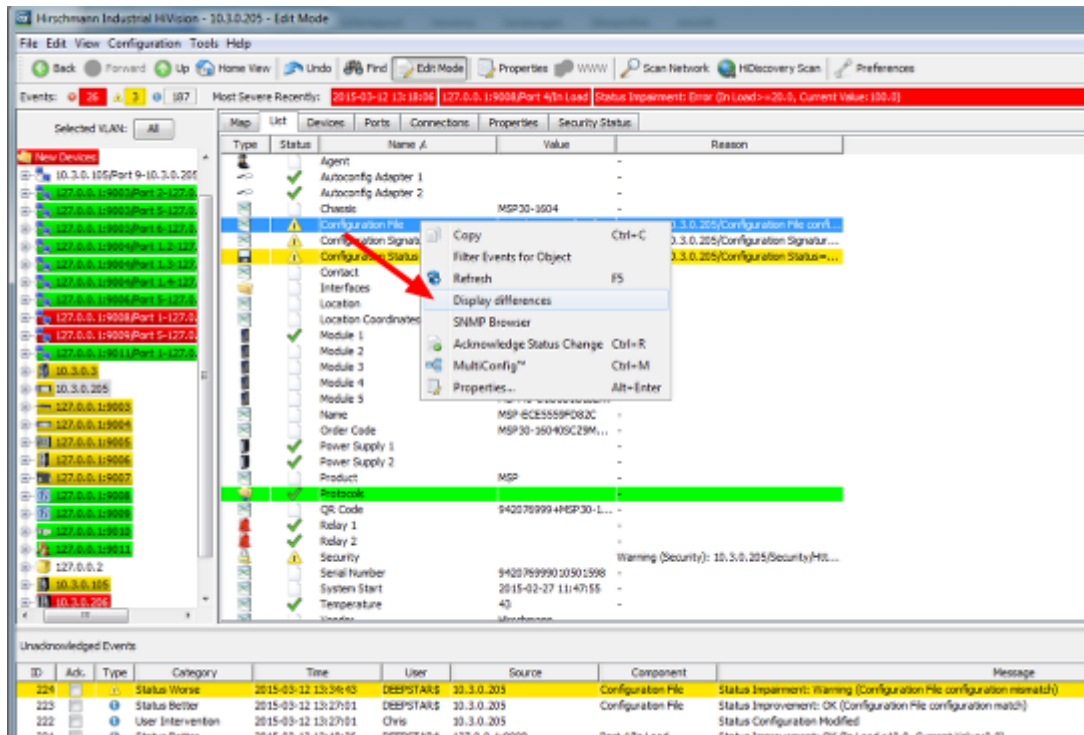
Status
Current Status: No Status
Status: Determine
 Forward Status Up

4

Change the device configuration e.g. the device location:

1. double click the property location
2. change the current value
3. press write

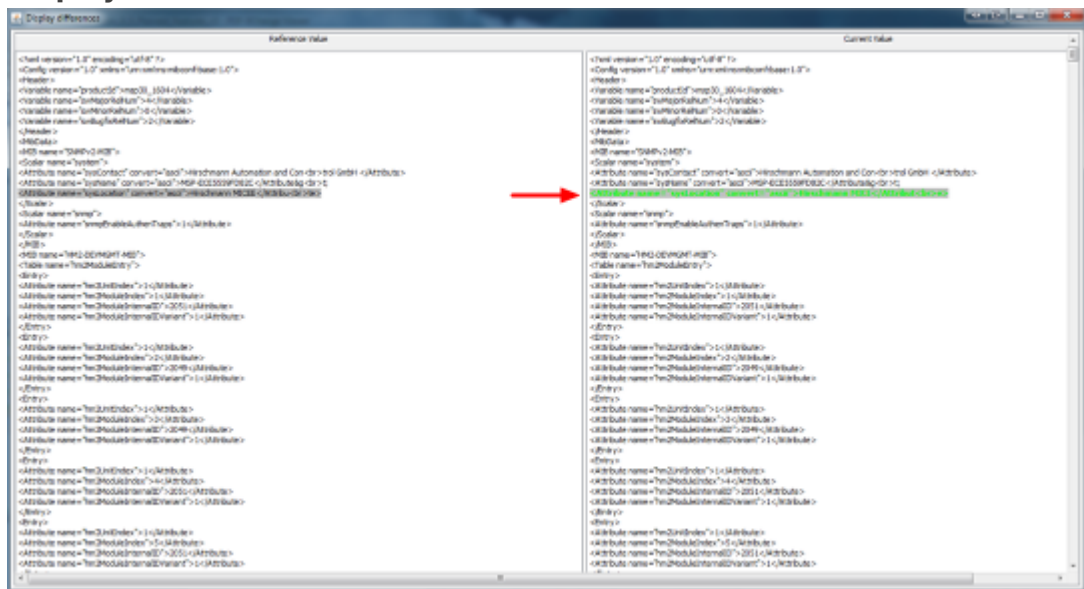
4. close the dialog with ok



Reload the Configuration File property if the change is not already detected.

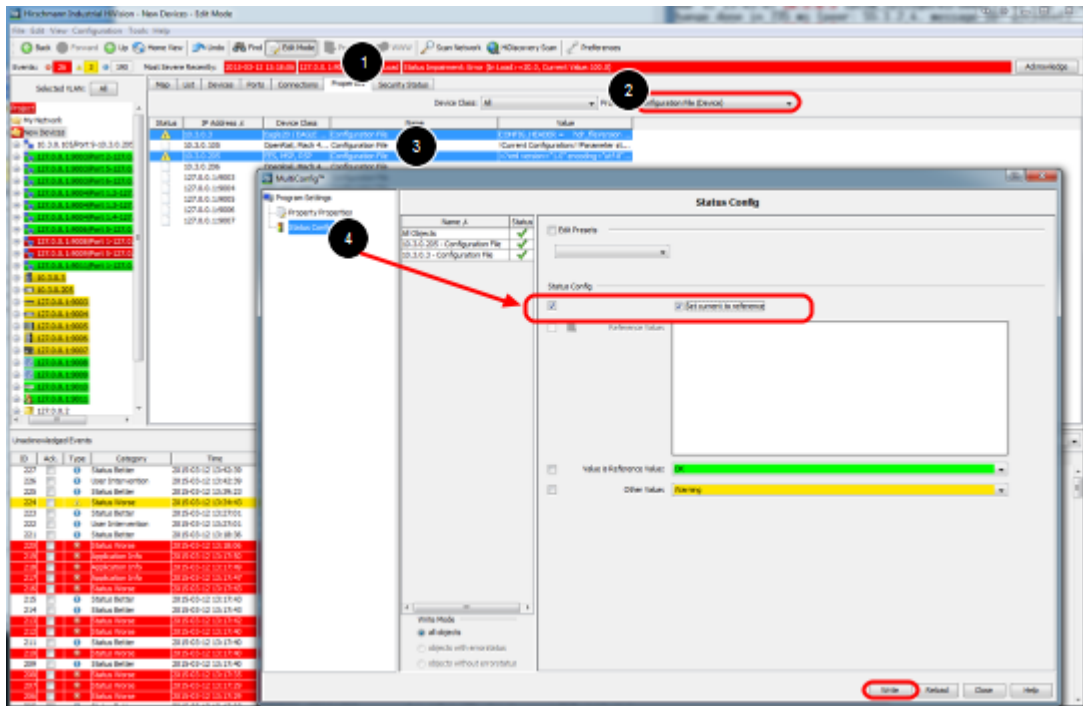
Open the context menu (right click on Configuration File) and select Display Differences

Display Differences



A new window will open which highlights the differences between the current and the reference config.

Set reference value per MultiConfig



1. To set the current value as reference value on multiple devices navigate to the Properties tab.
2. Select the property 'Configuration File (Device)'
3. Highlight devices and select Multiconfig from the context menu (right click)
4. Go to Status Config and tick 'Set current to reference'