

## IHV Audit Trail - Windows

- 2025-02-28 - Industrial HiVision

As of v6.0 IHV logs events to the Windows event log.

The events include:

Log in and out of Industrial HiVision

Any action which results in an SNMP Set Request being sent to a device, including the MIB variable that was set, and the new value

Any actions from HiDiscovery within Industrial HiVision

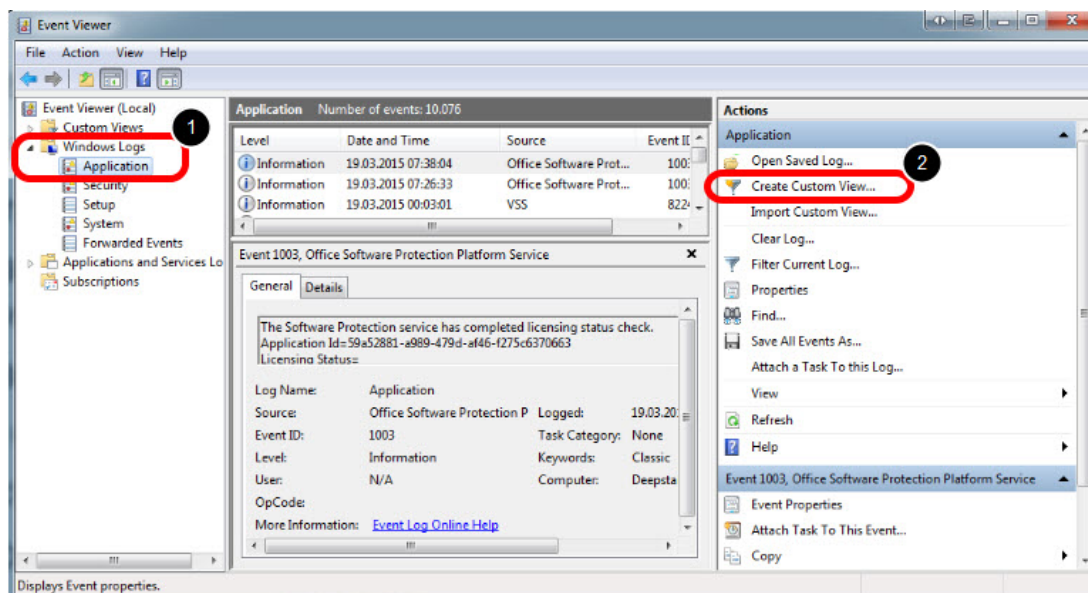
Start of external applications

All actions for which the "Edit Mode" is needed

Cannot be disabled

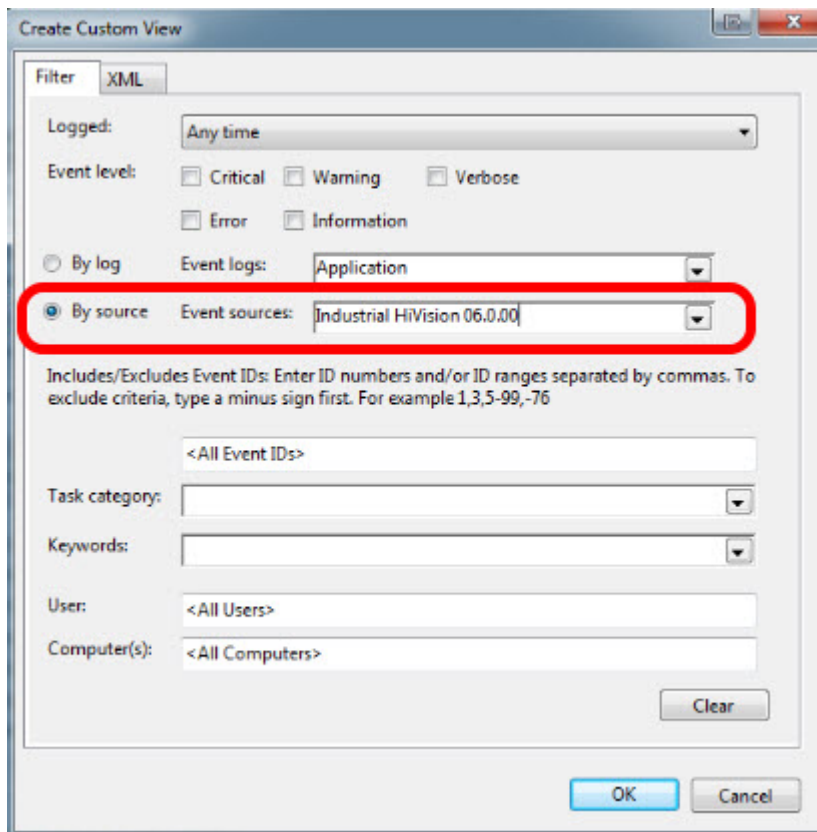
This lesson describes how to create a custom view for IHV 6.0 events in the windows event viewer

### Event Viewer



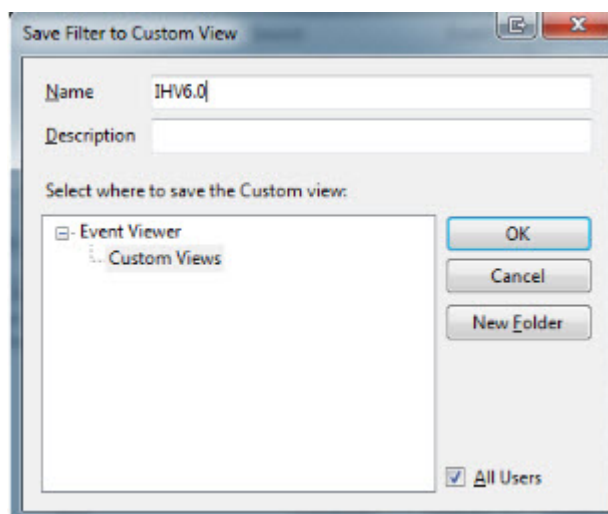
Hit the Windows-Key and type event viewer

### Create Custom View



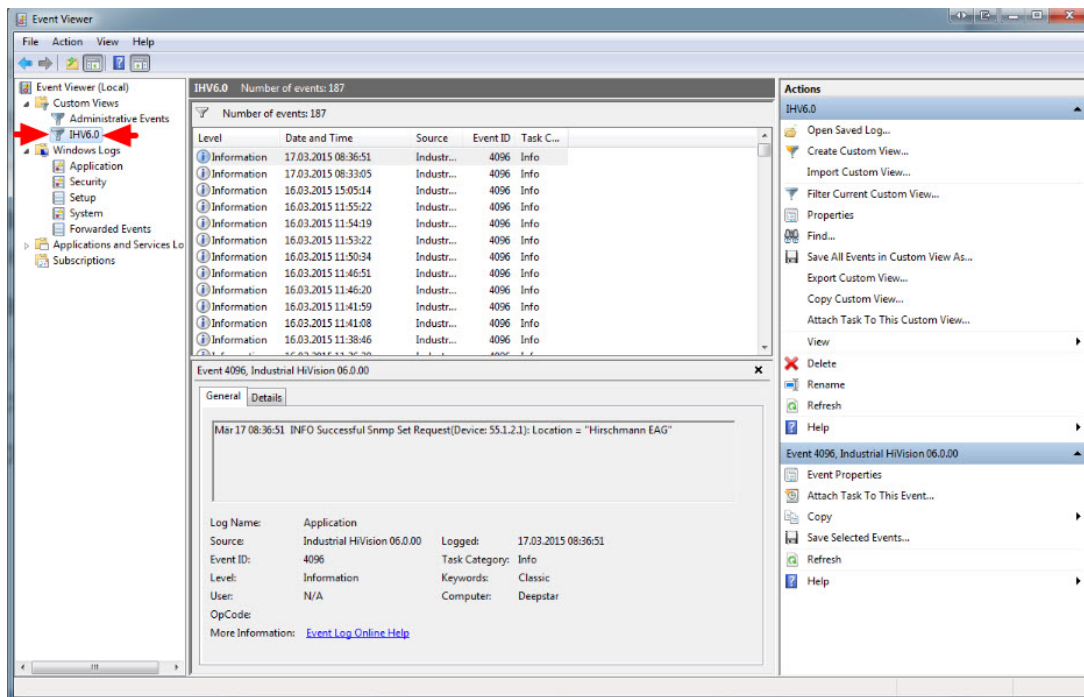
Filter by source for Industrial HiVision 06.0.00 and click ok

### Save Filter to Custom View



Specify a name and save the created filter as custom view

### Event Viewer - Custom View



The custom view is now available and displays IHV6.0 events only.