

Adding Properties to Industrial Hivision

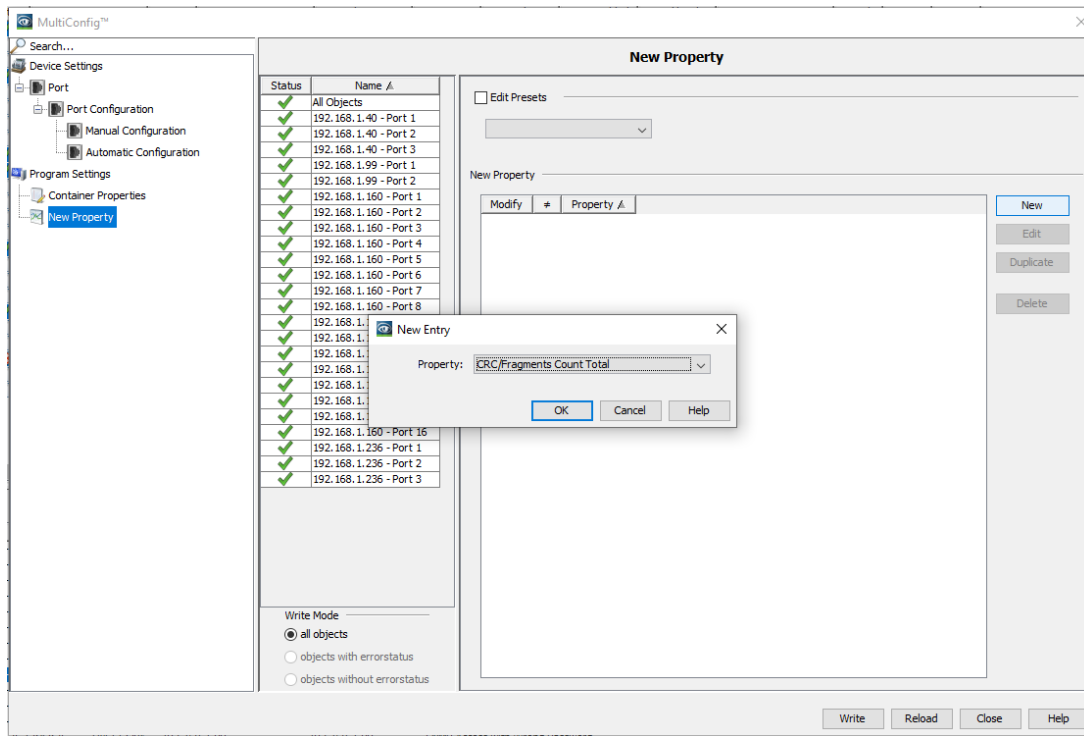
John M - 2021-09-03 - Industrial HiVision

This guide is designed to give an example of adding a new property in HiVision to give more monitoring options. The example in this guide uses a port property under the port tab. There are other properties that can be monitored that will be under the other tab selections.

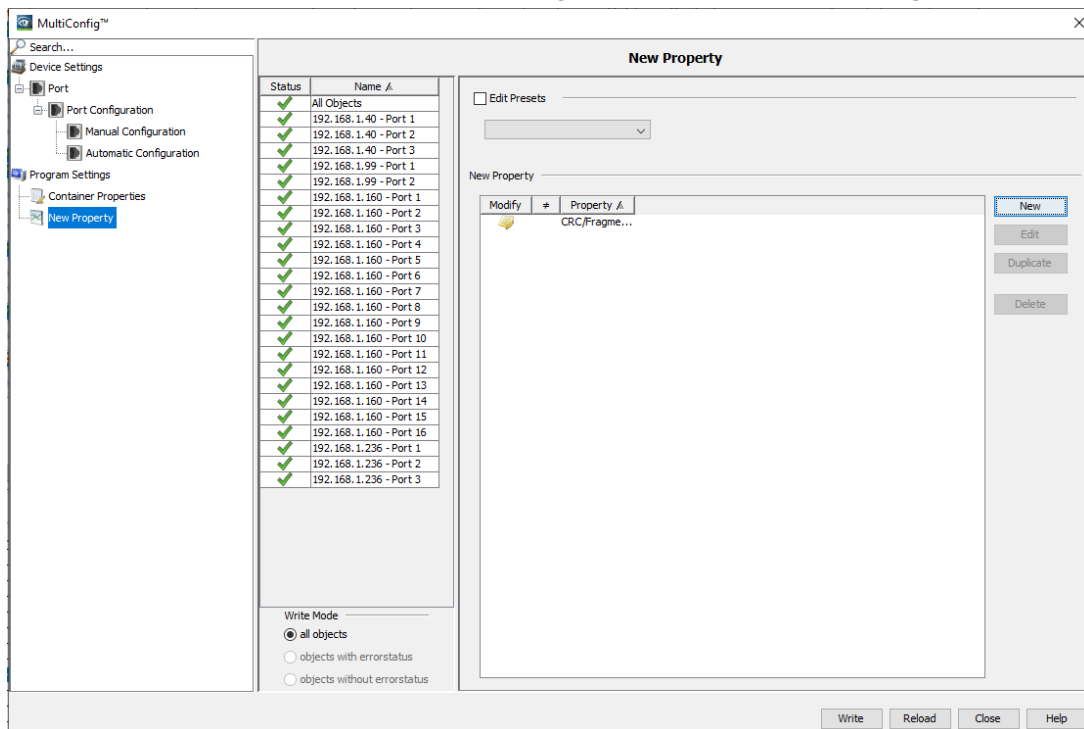
In Industrial Hivision, go to the ports tab and select the ports to be monitored

Map	List	Devices	Ports	Connections	Properties	Security Status	PEE													
Type	Status	Device ID	Port	Port Name	Media Type	Autoneg	Link	Port Enabled	Speed/Duplex	User	Load	PVID	Ingress	VLANs	VLAN Consistency Check	SFP Power RX (dBm)	SFP			
		192.168.1.40	1	Copper	Connected	Yes	100 Full	(S)	-	0.00	1	1	1	OK	-	-	-			
		192.168.1.40	2	Copper	Connected	Yes	100 Full	-	-	0.00	1	1	1	OK	-	-	-			
		192.168.1.40	3	Unknown	Not Connected	Yes	-	-	-	0.00	1	1	1	Error	-	-	-			
		192.168.1.99	1	Copper	Connected	Yes	100 Full	ehb99-7a-0c-4b-f5	-	0.00	-	-	-	-	-	-	-			
		192.168.1.99	2	Copper	Not Connected	Yes	-	-	-	0.00	-	-	-	-	-	-	-			
		192.168.1.160	15	Copper	Not Connected	Yes	-	-	-	0.00	1	1	1	OK	-	-	-			
		192.168.1.160	11	Copper	Not Connected	Yes	-	-	-	0.00	1	1	1	OK	-	-	-			
		192.168.1.160	7	Copper	Not Connected	Yes	-	-	-	0.00	1	1	1	OK	-	-	-			
		192.168.1.160	3	Copper	Connected	Yes	100 Full	ecac5:55:a6:34:1e	-	0.00	1	1	1	OK	-	-	-			
		192.168.1.160	16	Copper	Connected	Yes	100 Full	-	-	0.00	1	1	1	OK	-	-	-			
		192.168.1.160	12	Copper	Not Connected	Yes	-	-	-	0.00	1	1	1	OK	-	-	-			
		192.168.1.160	8	Copper	Not Connected	Yes	-	-	-	0.00	1	1	1	OK	-	-	-			
		192.168.1.160	4	Copper	Not Connected	Yes	-	-	-	0.00	1	1	1	OK	-	-	-			
		192.168.1.160	13	Copper	Not Connected	Yes	-	-	-	0.00	1	1	1	OK	-	-	-			
		192.168.1.160	9	Copper	Connected	Yes	100 Full	94:60:38:85:9e7e	-	0.00	1	1	1	OK	-	-	-			
		192.168.1.160	5	Copper	Not Connected	Yes	-	-	-	0.00	1	1	1	OK	-	-	-			
		192.168.1.160	1	Fiber	Not Connected	Yes	-	-	-	0.00	1	1	1	OK	-	-	-			
		192.168.1.160	14	Copper	Not Connected	Yes	-	-	-	0.00	1	1	1	OK	-	-	-			
		192.168.1.160	10	Copper	Connected	Yes	100 Full	(S)	-	0.00	1	1	1	OK	-	-	-			
		192.168.1.160	6	Copper	Not Connected	Yes	-	-	-	0.00	1	1	1	OK	-	-	-			
		192.168.1.160	2	Fiber	Not Connected	No	-	-	-	0.00	1	1	1	OK	-	-	-			
		192.168.1.236	2	Unknown	Not Connected	No	-	-	-	0.00	-	-	-	-	-	-	-			
		192.168.1.236	1	Unknown	Connected	Yes	100	-	-	0.00	-	-	-	-	-	-	-			
		192.168.1.236	3	Unknown	Not Connected	No	-	-	-	0.00	-	-	-	-	-	-	-			

Right click and select Multi-config, click the new button and select the property that needs to be monitored, click OK



Click the write button and close the Multi-config window when finished writing



Go to the properties tab and select the property that was just added (as shown below in yellow) to monitor the value.

Map List Devices Ports Connections Properties Security Status PoE							
Device Class: All Property: CRC/Fragments Count Total (Port)							
Device...	Status	IP Address A	Device Name	Device Class	Name	Value	
	<input type="checkbox"/>	192.168.1.40	192.168.1.40	EAGLE 20/30	Port 2	0	
	<input type="checkbox"/>	192.168.1.40	192.168.1.40	EAGLE 20/30	Port 3	0	
	<input type="checkbox"/>	192.168.1.40	192.168.1.40	EAGLE 20/30	Port 1	0	
	<input type="checkbox"/>	192.168.1.99	192.168.1.99	Eagle20 / EAGLE ...	Port 1	0	
	<input type="checkbox"/>	192.168.1.99	192.168.1.99	Eagle20 / EAGLE ...	Port 2	0	
	<input type="checkbox"/>	192.168.1.160	192.168.1.160	OpenRail, Mach 4...	Port 5	0	
	<input type="checkbox"/>	192.168.1.160	192.168.1.160	OpenRail, Mach 4...	Port 15	0	
	<input type="checkbox"/>	192.168.1.160	192.168.1.160	OpenRail, Mach 4...	Port 10	0	
	<input type="checkbox"/>	192.168.1.160	192.168.1.160	OpenRail, Mach 4...	Port 8	0	
	<input type="checkbox"/>	192.168.1.160	192.168.1.160	OpenRail, Mach 4...	Port 13	0	
	<input type="checkbox"/>	192.168.1.160	192.168.1.160	OpenRail, Mach 4...	Port 3	0	
	<input type="checkbox"/>	192.168.1.160	192.168.1.160	OpenRail, Mach 4...	Port 2	0	
	<input type="checkbox"/>	192.168.1.160	192.168.1.160	OpenRail, Mach 4...	Port 7	0	
	<input type="checkbox"/>	192.168.1.160	192.168.1.160	OpenRail, Mach 4...	Port 11	0	
	<input type="checkbox"/>	192.168.1.160	192.168.1.160	OpenRail, Mach 4...	Port 16	0	
	<input type="checkbox"/>	192.168.1.160	192.168.1.160	OpenRail, Mach 4...	Port 9	0	
	<input type="checkbox"/>	192.168.1.160	192.168.1.160	OpenRail, Mach 4...	Port 14	0	
	<input type="checkbox"/>	192.168.1.160	192.168.1.160	OpenRail, Mach 4...	Port 4	0	
	<input type="checkbox"/>	192.168.1.160	192.168.1.160	OpenRail, Mach 4...	Port 12	0	
	<input type="checkbox"/>	192.168.1.160	192.168.1.160	OpenRail, Mach 4...	Port 1	0	
	<input type="checkbox"/>	192.168.1.160	192.168.1.160	OpenRail, Mach 4...	Port 6	0	
	<input type="checkbox"/>	192.168.1.236	192.168.1.236	Switch	Port 2	0	
	<input type="checkbox"/>	192.168.1.236	192.168.1.236	Switch	Port 3	0	
	<input type="checkbox"/>	192.168.1.236	192.168.1.236	Switch	Port 1	0	

