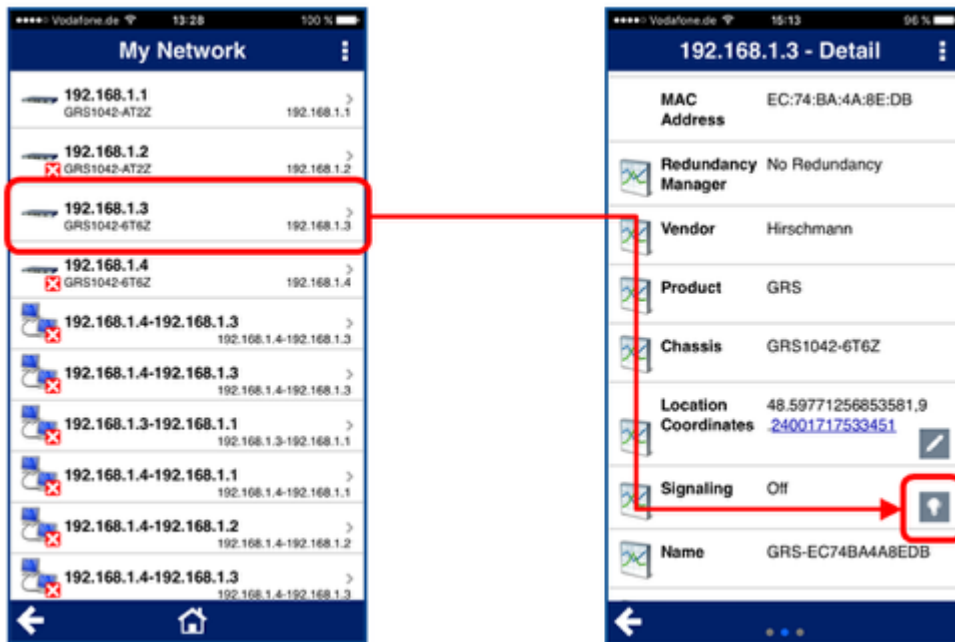


HiMobile Device-, Port- and Connection signaling

- 2018-02-21 - HiMobile

This lesson describes the signaling feature of HiMobile 3.0

Device Signaling



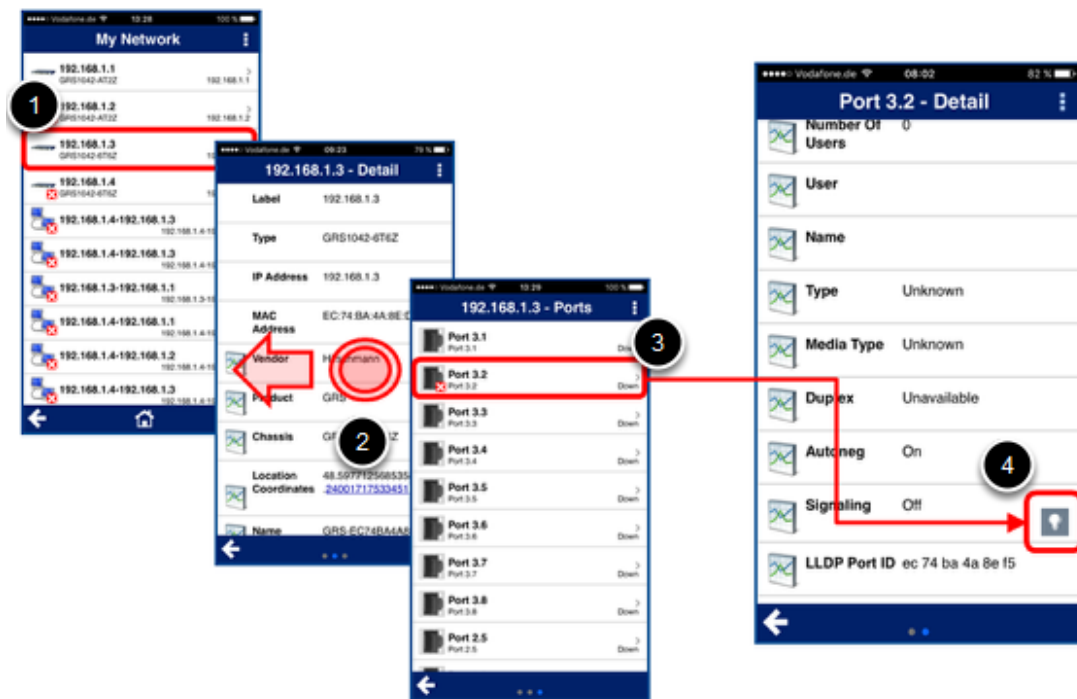
Device signaling requires HiOS 04.0.00, ClassicSwitch 09.0.01, HiSecOS 03.0.00 or later versions.

In the network overview, tap on the device you want to signal

In the device overview, scroll down to the property „Signaling“ and tap the light bulb

The device will signal like with HiDiscvory for a few seconds

Port Signaling



Port signaling requires HiOS 06.0.01 or higher

In the network overview, tap on the device with the port you want to signal

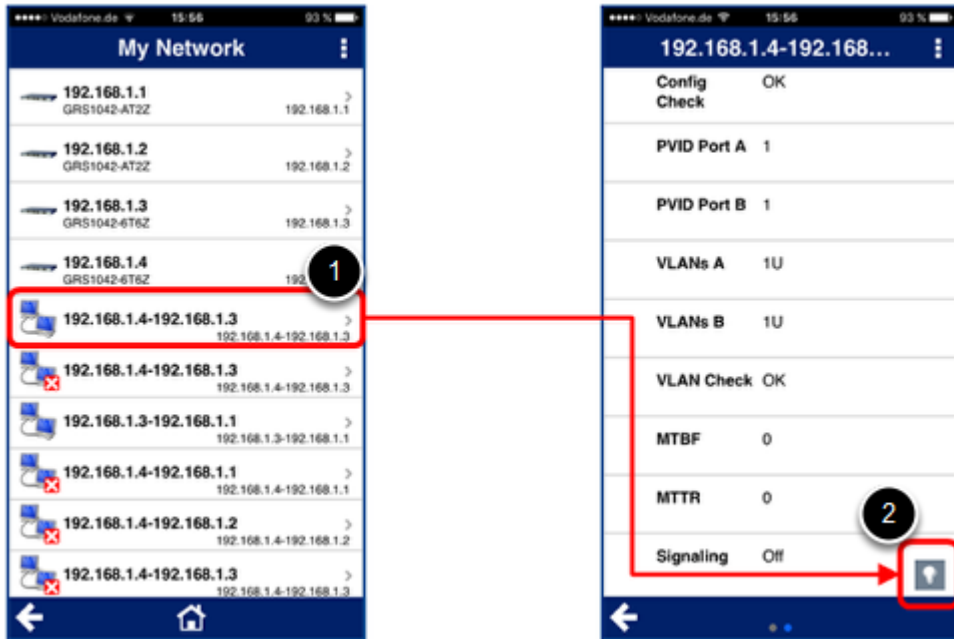
In the device view, swipe to the left to see the port overview

In the all port overview, tap on the port you want to signal

In the port overview, scroll down to the property „Signaling“ and tap the light bulb

The port will signal for a few seconds

Connection Signaling



Connection signaling requires HiOS 06.0.01 or higher

In the network overview, tap on the connection you want to signal

In the connection overview, scroll down to the property „Signaling“ and tap the light bulb

The two end ports of the connection will signal for a few seconds