

## Rogue Device Detection

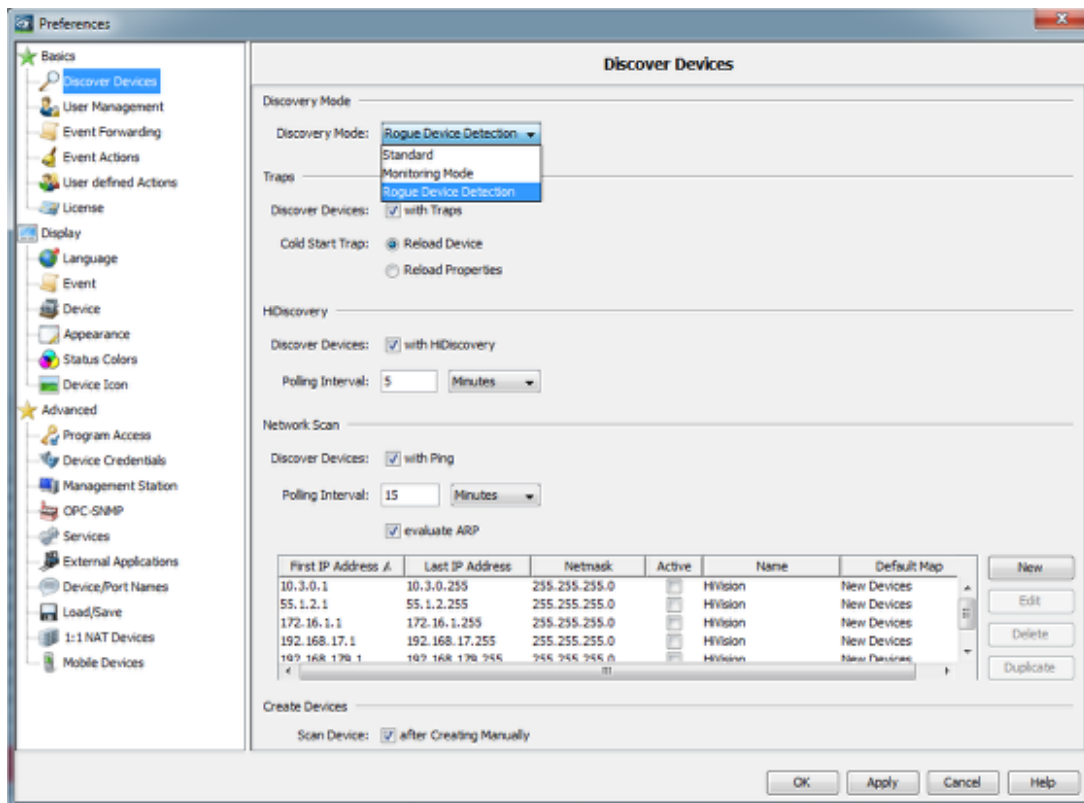
- 2018-02-21 - Industrial HiVision

Rogue Device Detection is available as of IHV v6.0 and can be selected in the preferences dialog.

This discovery mode will detect devices using the selected discovery options but place discovered devices in a separate folder named Rogue Devices.

This feature allows to find devices which do not belong to the monitored network.

### **Discovery Mode**



In the preferences you can select from 3 different discovery modes.

**Standard:** IHV uses the selected options to discover devices

**Monitoring Mode:** no automatic scanning but Network Scan, HiDiscovery Scan or add device manually are available

**Rogue Device Detection:** selected options will be used (at least one option must be selected). Discovered devices will be placed in folder Rogue Devices

## Rogue Devices

The screenshot shows the Hirschmann Industrial HiVision interface. The left sidebar contains a tree view with folders for 'Devices', 'Rogue Devices', and 'Unused Devices'. The 'Rogue Devices' folder is highlighted with a red arrow. The main area displays a network map with a single device icon labeled '172.16.1.220'. Below the map is a table of 'Unacknowledged Events'.

ID	Act.	Type	Category	Time	User	Source	Component	Message
535		Device Managed		2015-04-27 13:22:13	DEPSTAR@	Industrial HiVision Service		Device Added to Topology 172.16.1.220, 00:80:63:2F:6E:08
534		Device Managed		2015-04-27 13:22:08	DEPSTAR@	Industrial HiVision Service		Compatible Class Found for Device: IP Address: 172.16.1.220, 00:80:63:2F:6E:08. Device Class: CooperRail, Mach 4000, ...
533		Device Managed		2015-04-27 13:23:07	DEPSTAR@	Industrial HiVision Service		SNMP Access Established 172.16.1.220
532		Device Discovered		2015-04-27 13:23:07	DEPSTAR@	Industrial HiVision Service		New Rogue Device Detected by SNMP Trap 172.16.1.220
531		Device Discovered		2015-04-27 13:23:07	DEPSTAR@	Industrial HiVision Service		New Rogue Device Detected by SNMP Trap 172.16.1.220
530		User Intervention		2015-04-27 13:22:26	superuser	Industrial HiVision		Privileged Mode Entered
529		User Intervention		2015-04-27 13:22:12	superuser	Industrial HiVision		Industrial HiVision is Switched to Edit Mode! superuser@CooperRail
528		User Intervention		2015-04-27 13:22:12	superuser	Industrial HiVision		Industrial HiVision is Switched to Run Mode! superuser@CooperRail
527		Device Removed		2015-04-27 13:22:07	DEPSTAR@	Industrial HiVision Service		Device Removed: 172.16.1.220, 00:80:63:2F:6E:08
526		User Intervention		2015-04-27 13:22:05	DEPSTAR@	Industrial HiVision		Refresh Device (F5), Device: 172.16.1.220, 00:80:63:2F:6E:08
525		Domain		2015-04-27 13:21:47	DEPSTAR@	Industrial HiVision Service		Connected to subdomain 172.16.1.225
524		SNMP Trap		2015-04-27 13:21:40	DEPSTAR@	172.16.1.220	172.16.1.220	Device was Switched On
523		Stalks Better		2015-04-27 13:21:38	DEPSTAR@	172.16.1.220	Protocol/Protocol ON	Status Improvement: OK [Reachability=Yes]
522		Stalks Worse		2015-04-27 13:20:44	DEPSTAR@	172.16.1.220	Protocol/Protocol ON	Status Impairment: Error [Reachability=No]
521		Stalks Worse		2015-04-27 13:20:34	DEPSTAR@	172.16.1.220	Protocol/Protocol ON	Status Impairment: Error [Reachability=No]
520		Event Acknowledge		2015-04-27 13:20:25	superuser	Industrial HiVision		Severe Events Acknowledged by User: 181,187,194,196,198,203,210,211,214,216,221,250,269,308,309,311,317,323,...

Log entries for discovered rogue devices are generated