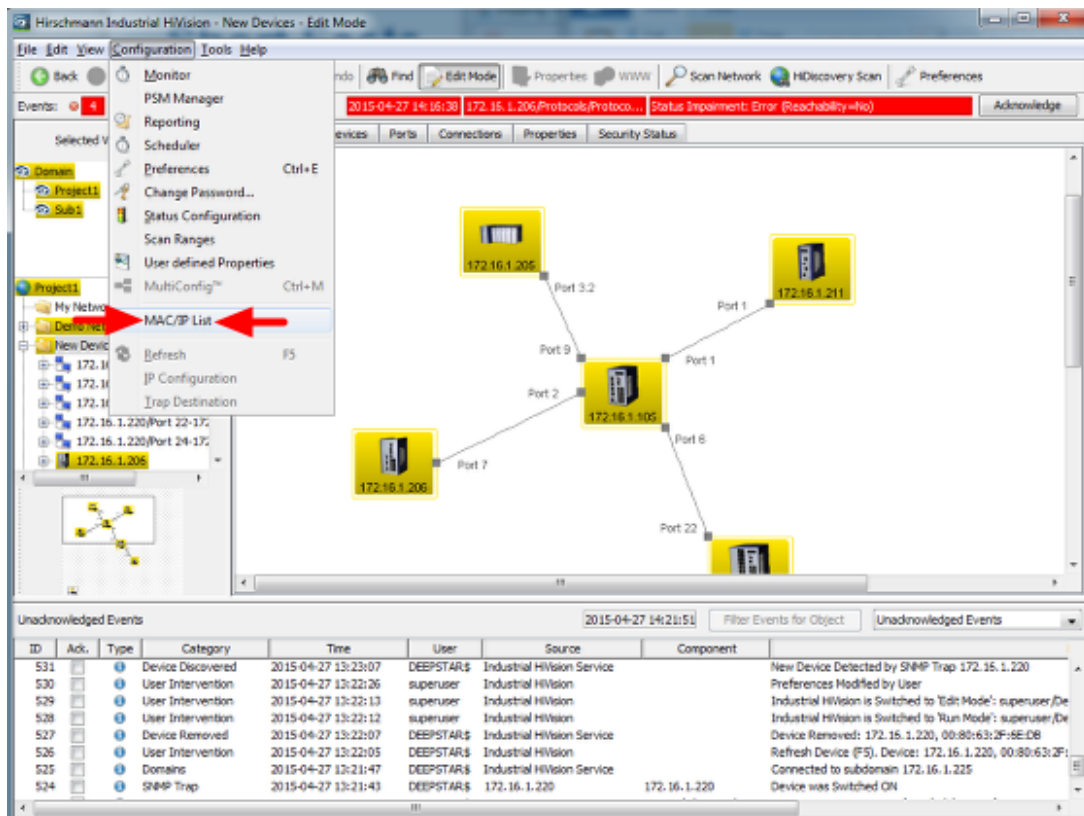


## IP/MAC pairs

- 2018-02-21 - Industrial HiVision

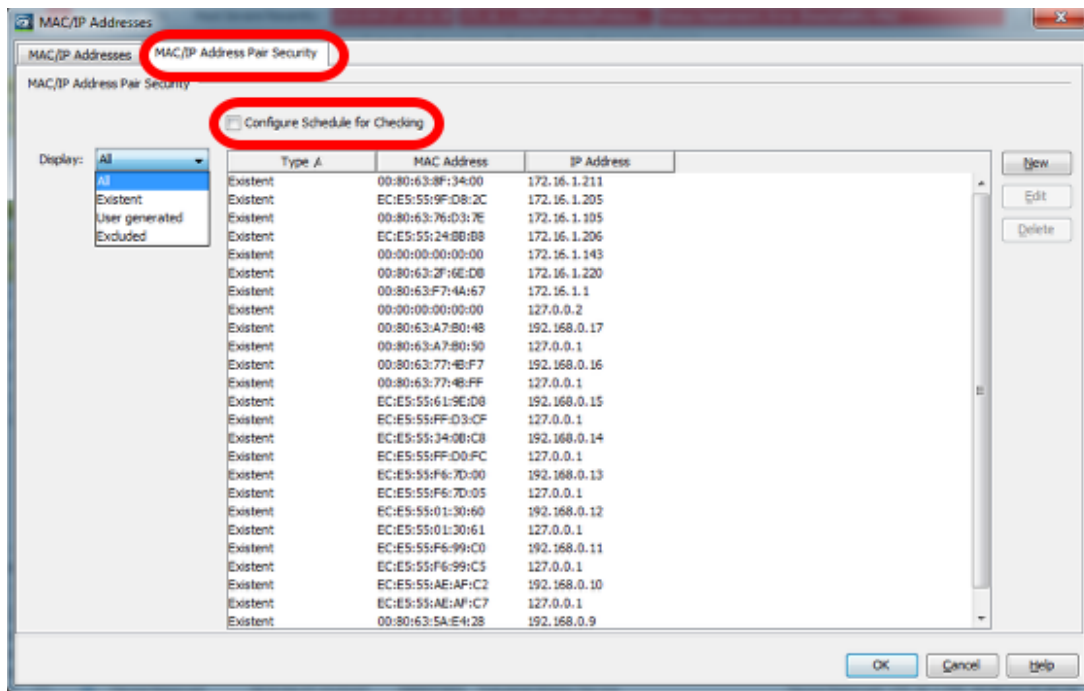
IP/MAC pairs is a security feature which is available as of IHV v6.0.

The purpose of this feature is to maintain a list of IP-MAC pairs and to signal if address associations change.



Select **Configuration - MAC/IP List** from the menu to open the current list of address pairs.

### MAC/IP address pair list



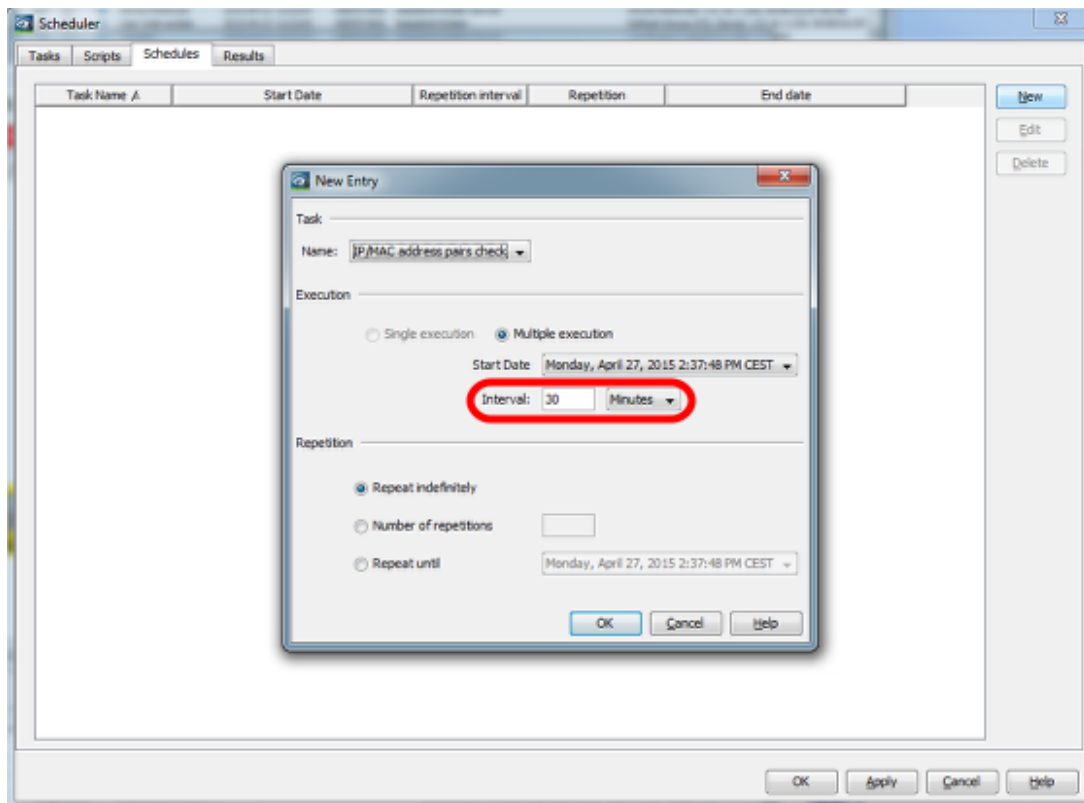
Change to the tab MAC/IP Address Pair Security.

IP/MAC pairs contained by this list will be differentiated between three types:

- Existent (in field)
- User generated (they are manually added by the user using add functionality or by selecting one of the existent pair and edit it).
- Excluded/Excepted (these are also added by user manually or by selecting and editing/converting an existent record. These do not preserve the MAC Address. For them will never be raised a warning event.

If **Configure Schedule for Checking** is checked the scheduler dialog will appear on leaving this dialog.

## Scheduler



In this dialog you can specify the schedule for checking IP/MAC pairs.  
The minimum interval for this feature is 30 minutes.

## Log Message

ID	Act.	Type	Category	Time	User	Source	Component	Message
462			Scheduler	2015-04-27 14:06:15	admin	IndelNet-Middleware Service		MAC address changed for IP address: 69.63.5.59:34C1-00:60:43:0B:41:8F
463			Status Administration	2015-04-27 14:06:15	admin	192.168.1.1:192.168.1.1	192.168.1.1:192.168.1.1	Status Change Administration OK