

Example for a user defined action

- 2018-02-21 - Industrial HiVision

User defined actions gives you the opportunity to run external applications from the context menu of a device.

This example shows how to define a user defined action to enable/disable a specific switch port.

Batch Files

Create a batch file (port-state.bat) with the following content:

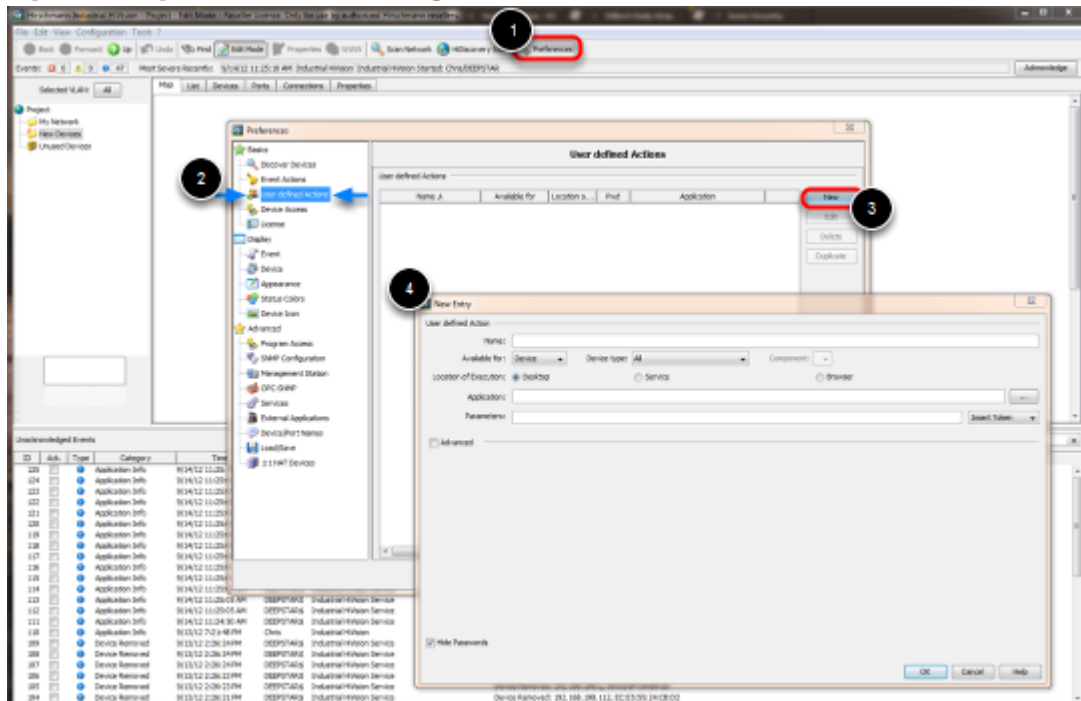
snmpset -c private %1 1.3.6.1.2.1.2.2.1.7.8 integer %2

(1

Note: *snmpset.exe* located in C:\Program Files\Hirschmann\Industrial HiVision 04.4.00\bin offers SNMPv1 only.

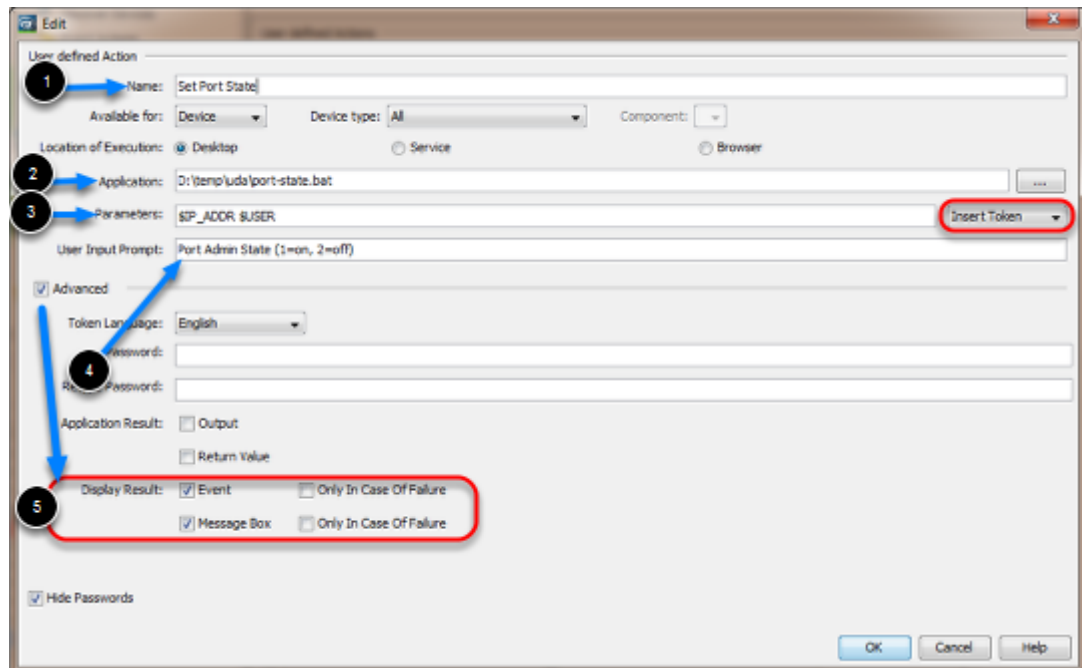
For SNMPv3 you need to use another SNMP tool like Net-SNMP (<http://www.net-snmp.org/>)

Open the preferences dialog



1. Click on **Preferences** in Industrial HiVision toolbar
2. Navigate to **User defined Actions**
3. Click on **New** to create a new entry.
4. **New Entry** dialog is shown

Define Action



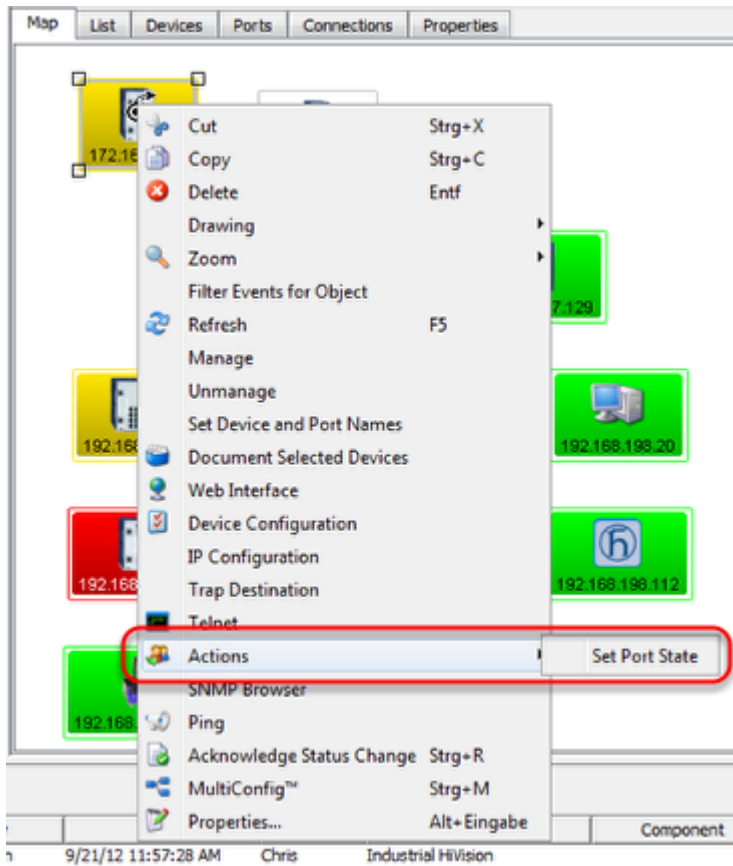
Create a new entry to set the Port State based on the user input.

1. Specify a **Name** for the User defined action
2. Enter the path to the previous created batch file port-state.bat.
3. Use the drop-down box to the right to add the **Parameters** \$IP_ADDR and \$USER
4. Add a meaningful text for the user input prompt like Port Admin State (1=on, 2=off)
5. Check the **Advanced** tick box and enable **Event** and **Message Box**

Finalize the user defined action by clicking **OK**

Click **OK** to close the preferences window

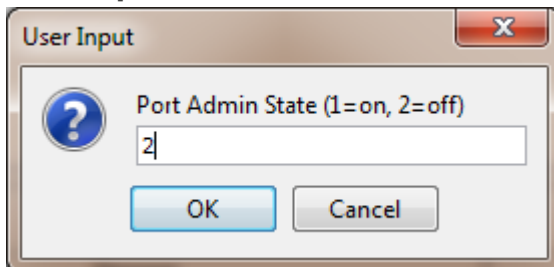
Run User Defined Action



Right click on a device to open the context menu.

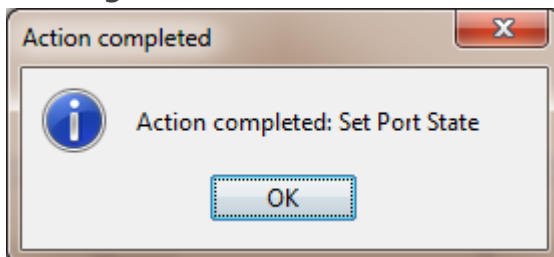
Select Actions - Set Port State

User Input



Enter 1 or 2 followed by OK to set the port admin state accordingly.

Message Box



A message box with the action result is shown.