

## How to use the V.24 interface of an Open BAT as COM Port Server

- 2018-02-21 - BAT, WLC (HiLCOS)

This lessons describes how to configure the serial interface of a BAT to connect an end device.

### **Representation**



In this example we'll use the COM Port server function of the BAT to access the serial interface of a RS20.

The traffic in destination of the BAT and to a specific TCP port will be redirected on the serial interface.

For that we'll use Putty installed on a computer.

### Preliminary steps

Pins of the M12 socket on the device	Pin	Function	Description of functions
	1	GND	Ground
	2	DTR	Data terminal ready
	3	TxD	Transmit data
	4	RxD	Receive data
	5	DCD	Data carrier detect
	6	DSR	Dataset ready
	7	RTS	Request to send
	8	CTS	Clear to send

Give the BAT an IP address (in our example: 192.168.1.130)

You can refer to the lesson ""How to give an Open BAT or a WLC an IP address""

Add the BAT in LANconfig

You can refer to the lesson ""How to discover a BAT or a WLC in LANconfig""

Establish a serial connection between the serial interface of the BAT and the serial interface of the RS20 (or other device)

Refer to the manual for the serial port pin assignment of the device to connect. (above pin assignment of the OpenBAT)

## **BAT Configuration (1)**





From LAN Config

Configuration > COM Ports > Devices > Device mode > Add

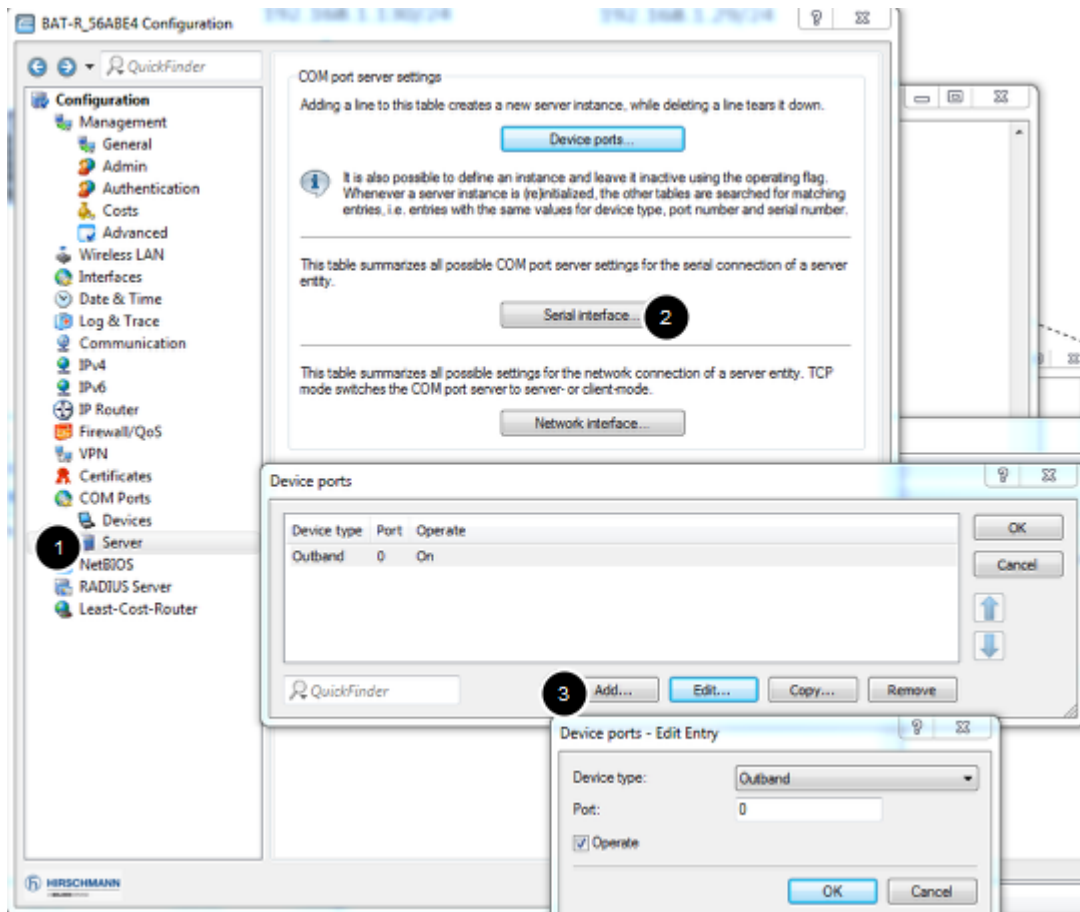
Device type: Outband

Device mode: COM port server

> OK

Take care that this setting disables the V.24 interface for the management

## BAT Configuration (2)



Configuration > COM Ports > Server > Serial Interface > Add

Device type: Outband

Port: 0

Activate ""Operate""

> OK

### **BAT Configuration (3)**



Configuration > COM Ports > Server > Network Interface > Add

Configure the TCP mode as server (in server mode the BAT monitors the incoming TCP connections while as client mode. In client mode, the instance attempts to establish a TCP connection via a defined port to the specified remote site, as soon as the port is ready)

Configure the TCP Port which will be used (in our example 8001)

> OK

## Putty configuration (1)



Default Terminal configuration of Putty has to be changed.

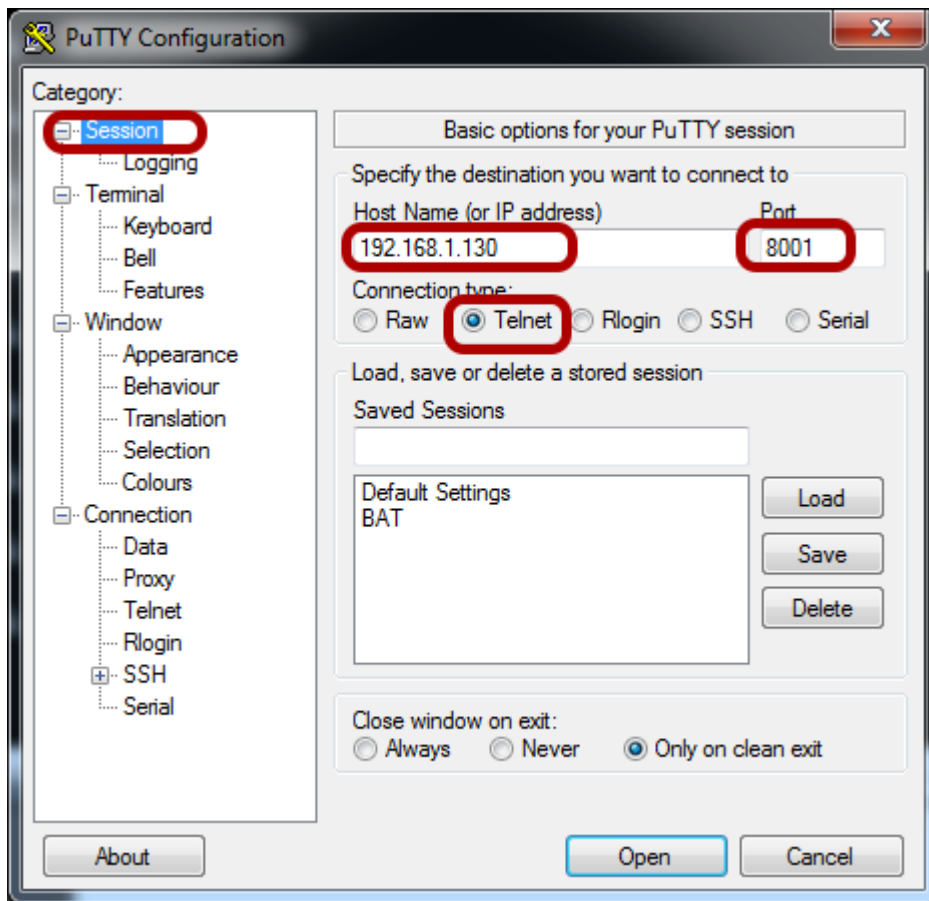
## Putty configuration (2)





The default configuration under Connection > Telnet has also to be changed.  
Untick ""Return key sends Telnet New Line instead of ^M""

### Putty configuration (3)



To finish, in the session dialog, Indicate the IP address of the BAT as Host,  
Use Telnet as connection type but change the port to: 8001 (the port listened by the BAT)  
> Open