

How to create a new database with HiProvision

This lesson describes step by step how to create a new database and start the HiProvision server.

Pre-requisite:

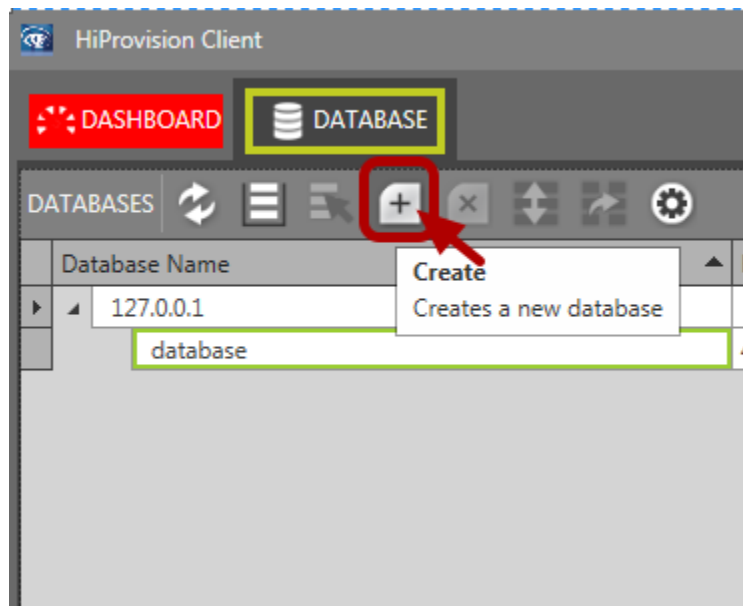
HiProvision must be installed (no license needed)

HiProvision server must be stopped

From the Dashboard, Select the Database App

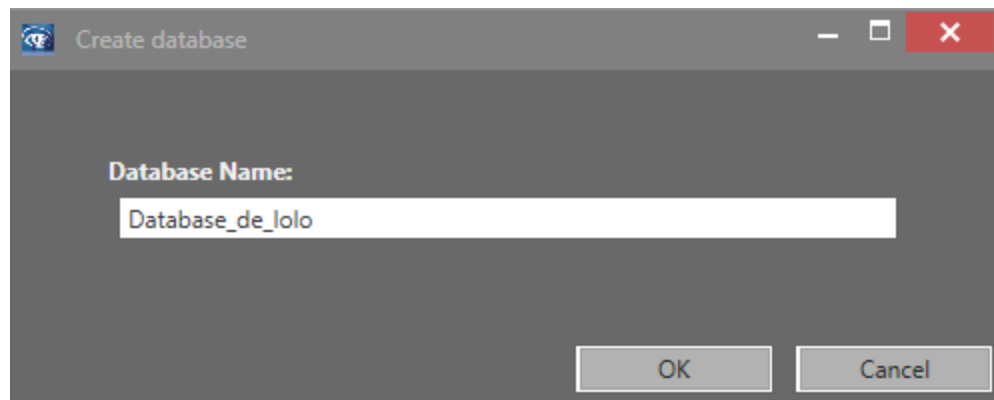


Database App



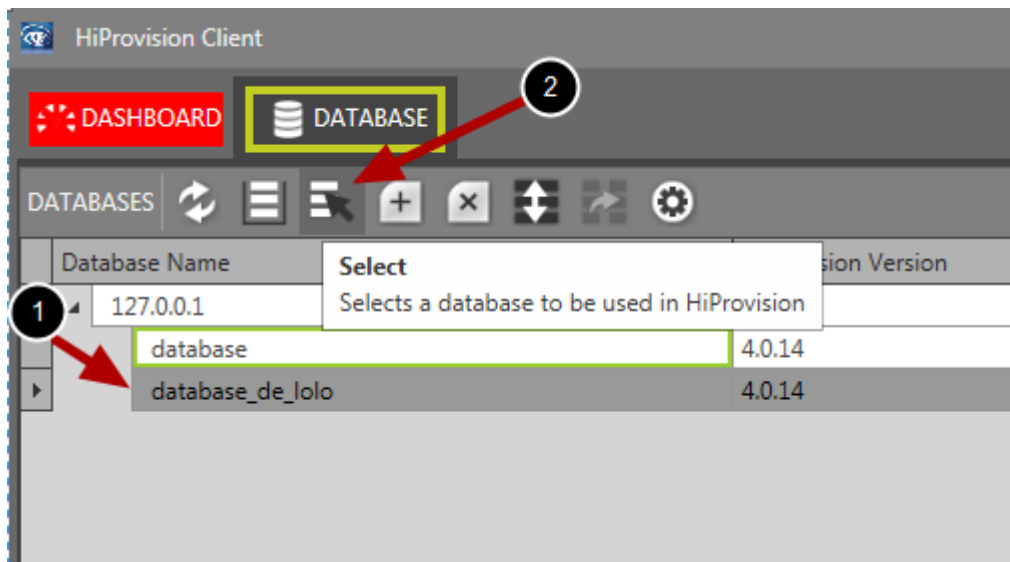
You will find listed all the databases found on the station.
To create a new database clic on the icon +

Give the database a name



Clicking OK, an empty database is created.

Select the database



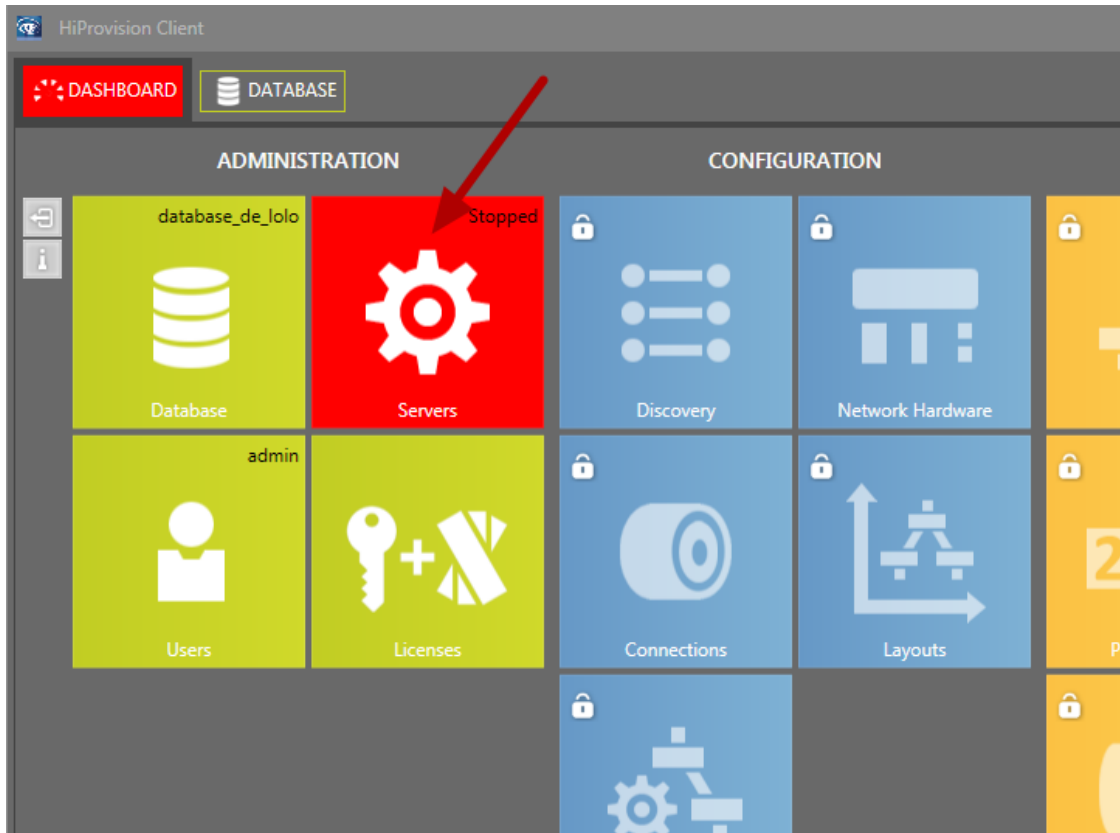
The empty database appear in the list.

1/ Select it (click on it)

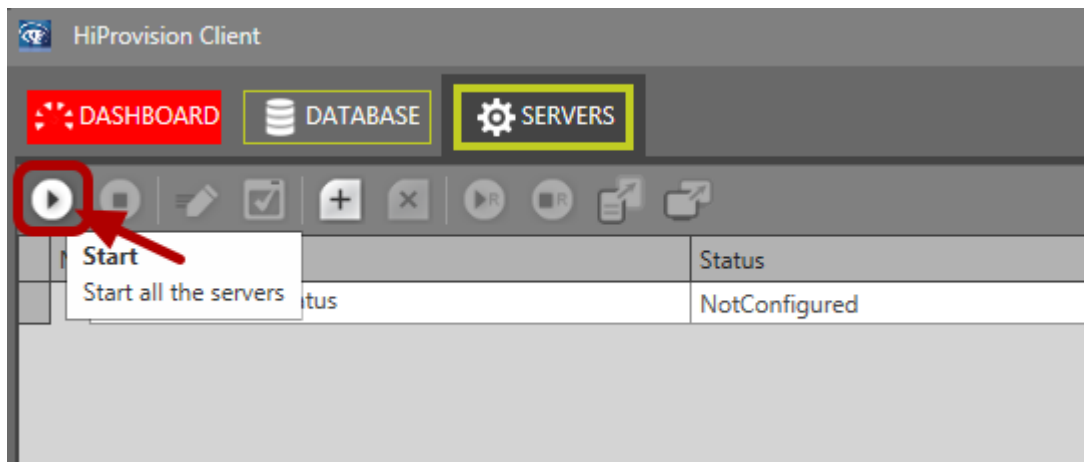
2/ Press the select button to indicate HiProvision that it must use this database.

Note: The currently selected database is framed in green

From the Dashboard, select the Server App



Start the server



Server is started when it appears in dark green

The screenshot displays the HiProvision Client interface. The top navigation bar includes tabs for DASHBOARD, DATABASE, SERVERS (highlighted), CONNECTIONS, and ALARMS. Below the navigation bar is a toolbar with various icons. The main area is divided into two panels. The left panel shows a tree view of the server configuration with a table of components and their status. A red arrow points to the 'Agent 1' entry. The right panel shows a network diagram with a laptop connected to a server labeled 'MASTER' (highlighted with a green box and a red arrow), which is in turn connected to a cloud labeled 'Dragon PTN'.

Name	Status
Redundancy status	NotConfigured
● ** Master on net.tcp://localhost:6001/MBD	Started
● Agent 1 on net.tcp://localhost:6001/BD	Started
● EM1	Started
● NC	Started
● LOG	Started
● ALARM	Started
● IM	Started
● FTP	Started
● NM1	Started

New database was created, selected and server was started, you can now begin to work with your new database.