

Configuration File Compare

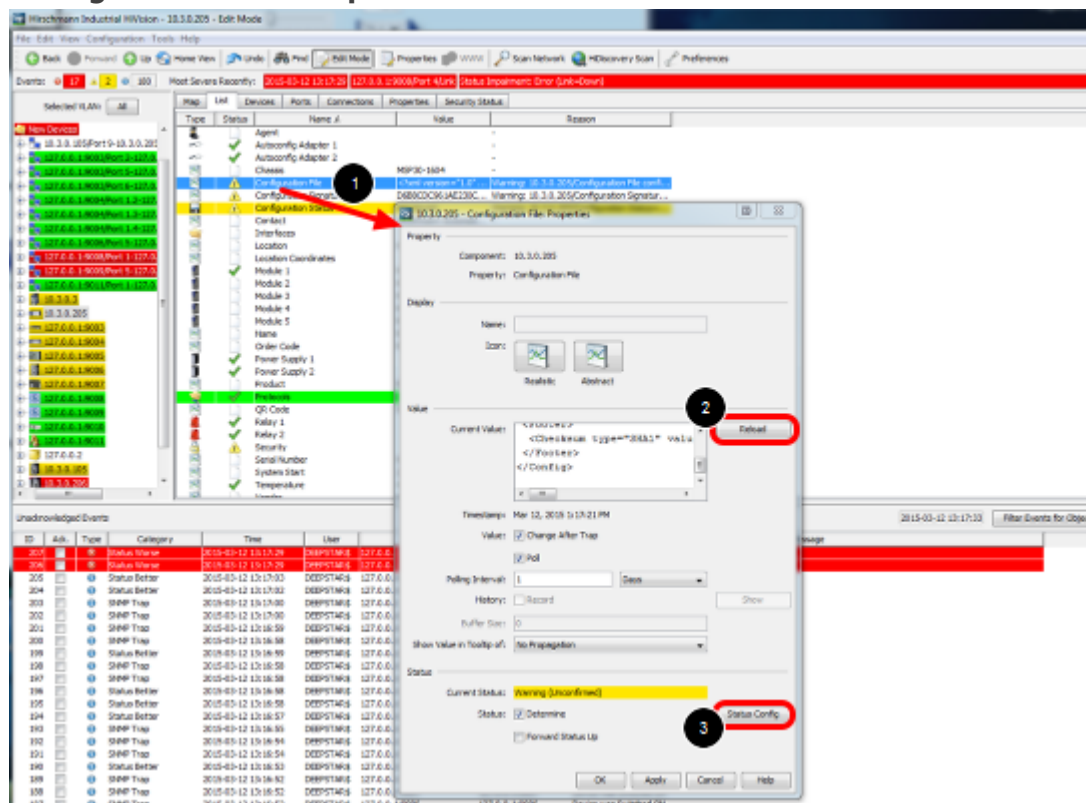
- 2018-02-21 - Industrial HiVision

As of v6.0 IHV is able to monitor the configuration file of a device (Platform4, Platform5, EAGLE, BAT and GarrettCom).

Therefor the clear text configuration (script or xml) is stored in a property. The standard polling/status configuration can be used for comparing the current configuration to the reference config.

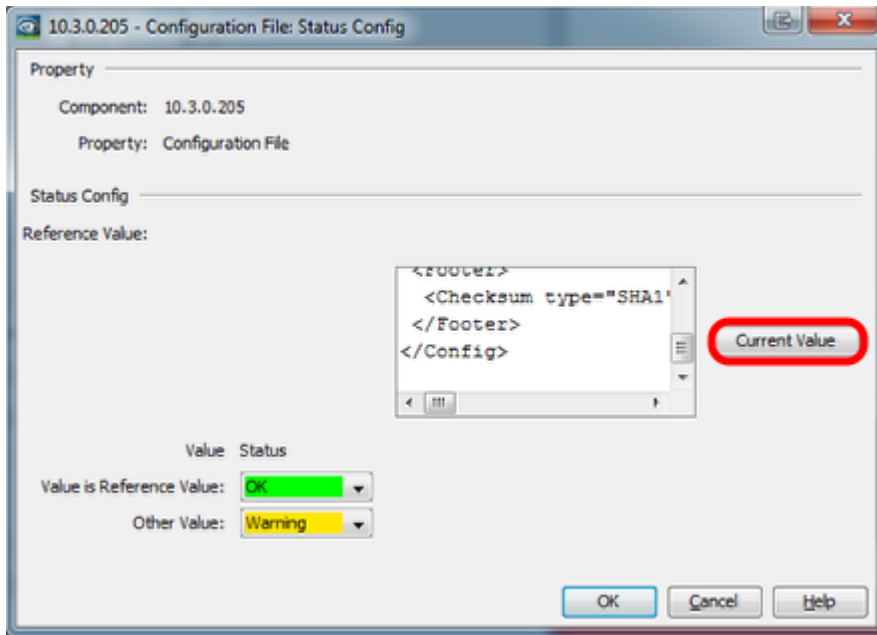
This lesson describes how to set a reference configuration and in case of configuration changes how you can display the differences.

Configuration File Properties



1. double click on the property Configuration File
2. press reload to download the current configuration from the device
3. open the status configuration

Configuration File - Status Config



In the status configuration dialog you can set the current value as reference value.

Change the configuration

Hirschmann Industrial HiVision - 303.0.205 - Edit Mode

File Edit View Configuration Tools Help

Back Forward Up Home View Links Print Edit Mode Properties WWW Scan Network HiDiscovery Scan Preferences

Events: 0 2 1 187 Most Severe Recently: 2015-03-12 13:18:08 127.0.0.1:9000/Port 40/In Load Status Dependent Error (In Load) - 20.0, Current Value: 190.0

Selected VLANs: All

| Type | Status | Name # | Value | Reason |
|-------------------------|--------|--------|-----------------------|---|
| Agent | | | | |
| Autocfg Adapter 1 | | | | |
| Autocfg Adapter 2 | | | | |
| Chassis | | | HSP30-1804 | |
| Configuration File | | | SHA1 Version: 1.0... | |
| Configuration Signature | | | D68BCDC941NE230C... | Warning: 30.3.0.205/Configuration Signatur... |
| Configuration Status | | | Not Saved | Warning: 30.3.0.205/Configuration Status... |
| Contact | | | Hirschmann Automat... | |
| Interfaces | | | | |
| Location Coordinates | | | Hirschmann | |
| Module 1 | | | HSP40-071101502... | |
| Module 2 | | | HSP40-071101502... | |
| Module 3 | | | HSP40-071101502... | |
| Module 4 | | | HSP40-071101502... | |
| Module 5 | | | HSP40-071101502... | |
| Name | | | HSP-EC6559P093C | |
| Order Code | | | HSP30-1804HSC294... | |
| Power Supply 1 | | | | |
| Power Supply 2 | | | | |
| Product | | | HSP | |
| Release | | | | |
| QR Code | | | 942075999 HSP30-... | |
| Role 1 | | | | |
| Role 2 | | | | |
| Security | | | | |
| Serial Number | | | 94207599901001590 | |
| System Start | | | 2015-02-27 11:47:55 | |
| Temperature | | | 43 | |
| Updater | | | Hirschmann | |

Unacknowledged Events

| ID | Subj. | Type | Category | Time | User | Source |
|-----|-------------------|------|----------|---------------------|--------------------------------|------------|
| 223 | Status Better | | | 2015-03-12 13:27:01 | DEPSTAR@ 30.3.0.205 | Configu... |
| 222 | User Intervention | | | 2015-03-12 13:27:01 | Chris 30.3.0.205 | |
| 221 | Status Better | | | 2015-03-12 13:28:26 | DEPSTAR@ 127.0.0.1:9000 | Port 40... |
| 220 | Status Worse | | | 2015-03-12 13:28:29 | DEPSTAR@ 127.0.0.1:9000 | Port 40... |
| 219 | Application Info | | | 2015-03-12 13:27:50 | ib Industrial HiVision Service | Port 41... |
| 218 | Application Info | | | 2015-03-12 13:27:49 | ib Industrial HiVision Service | Port 41... |
| 217 | Application Info | | | 2015-03-12 13:27:47 | ib Industrial HiVision Service | Port 41... |
| 216 | Status Worse | | | 2015-03-12 13:27:43 | DEPSTAR@ 127.0.0.1:9000 | Port 50... |
| 215 | Status Better | | | 2015-03-12 13:27:43 | DEPSTAR@ 127.0.0.1:9000 | Port 50... |
| 214 | Status Better | | | 2015-03-12 13:27:43 | DEPSTAR@ 127.0.0.1:9000 | Port 50... |
| 213 | Status Worse | | | 2015-03-12 13:27:40 | DEPSTAR@ 127.0.0.1:9000 | Port 50... |
| 212 | Status Worse | | | 2015-03-12 13:27:40 | DEPSTAR@ 127.0.0.1:9000 | Port 41... |
| 211 | Status Better | | | 2015-03-12 13:27:40 | DEPSTAR@ 127.0.0.1:9000 | Port 41... |
| 210 | Status Worse | | | 2015-03-12 13:27:40 | DEPSTAR@ 127.0.0.1:9000 | Port 11... |
| 209 | Status Better | | | 2015-03-12 13:27:40 | DEPSTAR@ 127.0.0.1:9000 | Port 11... |
| 208 | Status Worse | | | 2015-03-12 13:27:35 | DEPSTAR@ 127.0.0.1:9000 | Port M... |
| 207 | Status Worse | | | 2015-03-12 13:27:29 | DEPSTAR@ 127.0.0.1:9000 | Port 40... |
| 206 | Status Worse | | | 2015-03-12 13:27:29 | DEPSTAR@ 127.0.0.1:9000 | Port 41... |
| 205 | Status Better | | | 2015-03-12 13:27:03 | DEPSTAR@ 127.0.0.1:9000 | Prebo... |
| 204 | Status Better | | | 2015-03-12 13:27:02 | DEPSTAR@ 127.0.0.1:9000 | Prebo... |
| 203 | SNMP Trap | | | 2015-03-12 13:27:00 | DEPSTAR@ 127.0.0.2 | 127.0.0... |
| 202 | SNMP Trap | | | 2015-03-12 13:27:00 | DEPSTAR@ 127.0.0.1:9000 | 127.0.0... |

10.3.0.205 - Location Properties

Property
Component: 30.3.0.205
Property: Location

Deploy
Name:
Icon: Realistic Abstract

Value
Current Value:

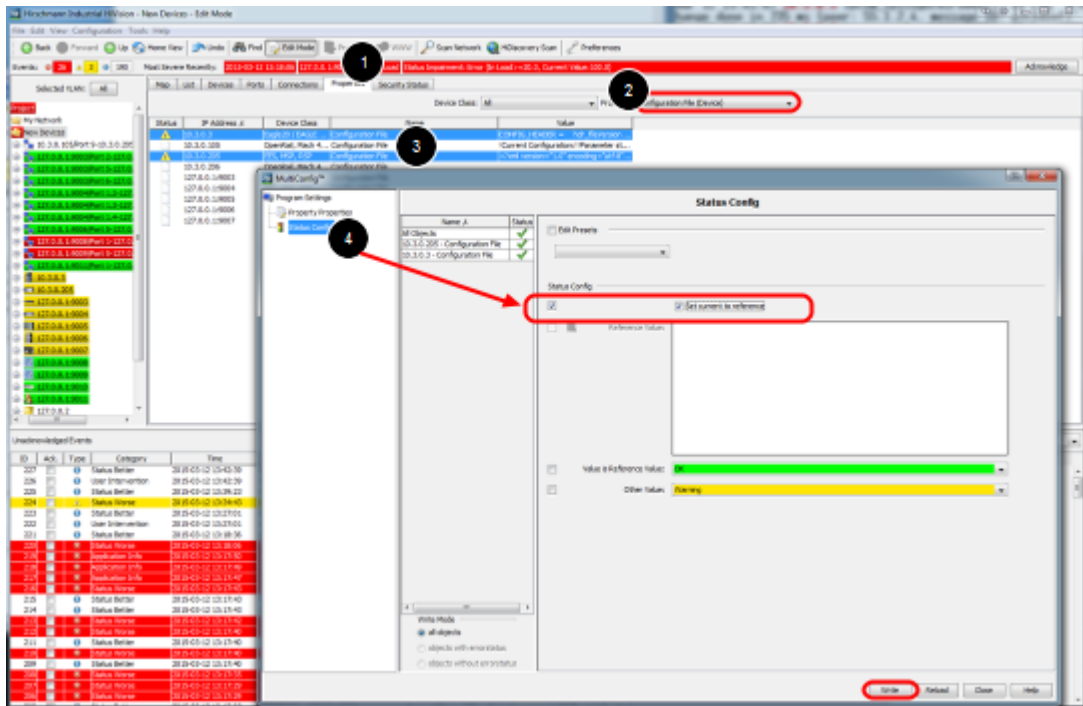
Timestamp: Mar 12, 2015 12:27:43 PM
Value: Change After Trap
 Fill
Polling Interval: 1 Minutes
History: Record
Buffer Size: 100
Show Value in Tooltip of: Device

Status
Current Status: No Status
Status: Determine
 Forward Status Up

4

Change the device configuration e.g. the device location:

1. double click the property location
2. change the current value
3. press write



1. To set the current value as reference value on multiple devices navigate to the Properties tab.
2. Select the property 'Configuration File (Device)'
3. Highlight devices and select Multiconfig from the context menu (right click)
4. Go to Status Config and tick 'Set current to reference'