

Configuration Signature Check

- 2018-02-21 - Industrial HiVision

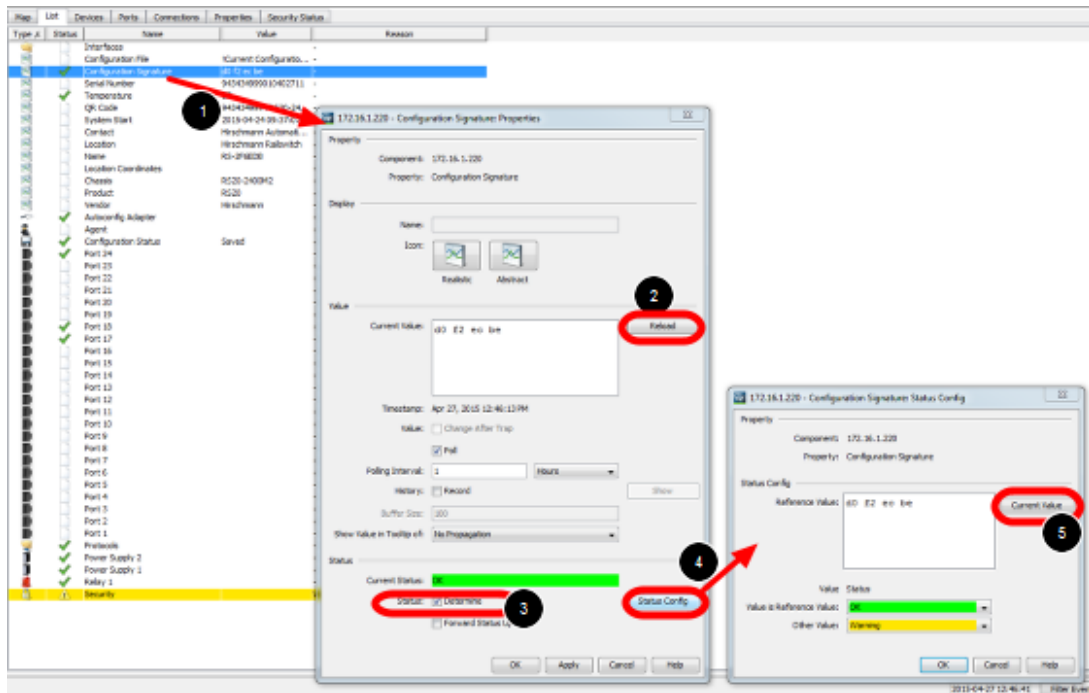
As of v6.0 IHV is able to monitor the configuration signature of a device (Platform4, Platform5, EAGLE)

Therefor the signature is stored in a property.

The standard polling/status configuration can be used for comparing the configuration signature to the reference signature.

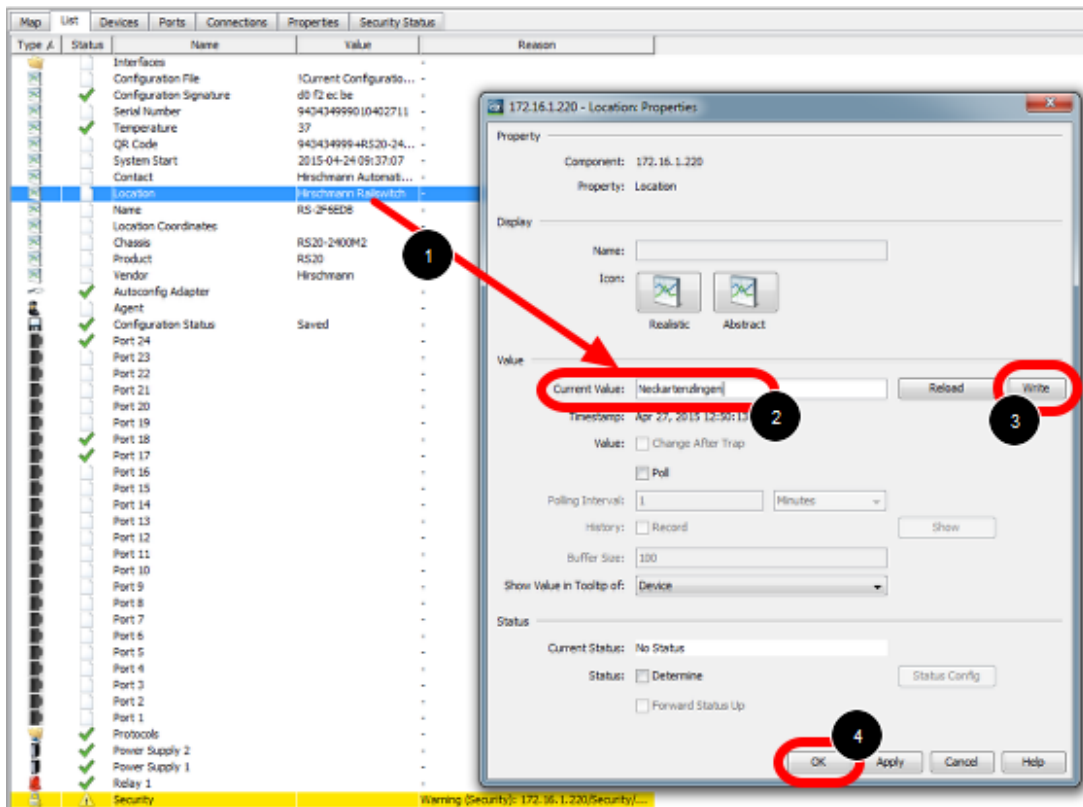
This lesson describes how to set a reference value of the configuration signature and how differences are displayed.

Configuration Signature Properties



1. double click on the property **Configuration Signature**
2. press reload to download the current configuration signature from the device
3. tick check box **Determine Status**
4. open the status configuration
5. set the current value as reference value

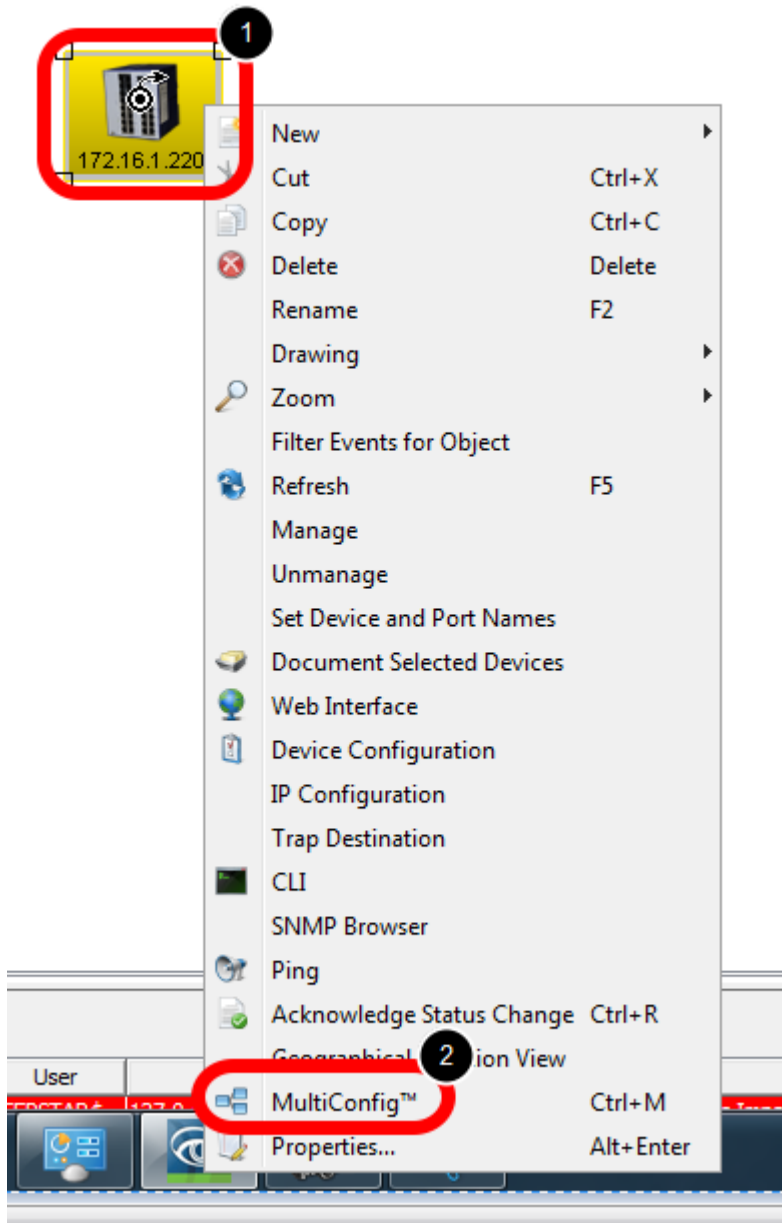
Change the configuration



Change the device configuration e.g. the device location:

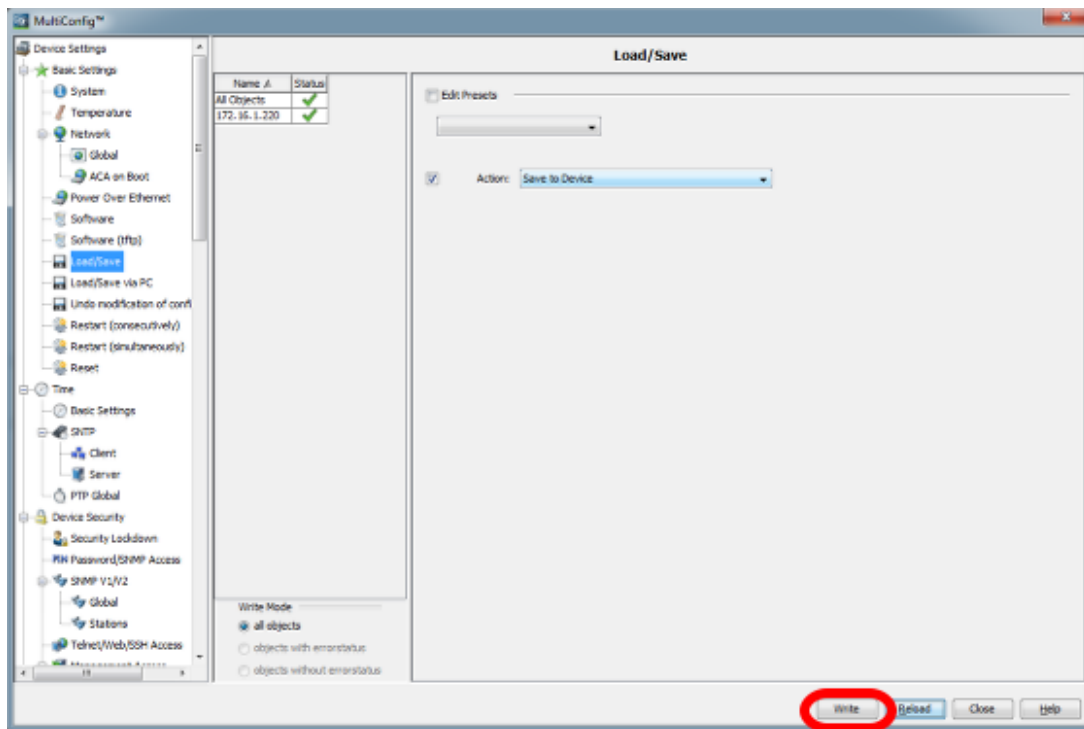
1. double click the property location
2. change the current value
3. press write
4. close the dialog with ok

MultiConfig



1. right click the device on which you just changed the location property
2. select MultiConfig from the context menu

Save the configuration



Save the configuration by pressing Write in the Load/Save dialog

Configuration Signature - Status Impairment

Winbox Industrial Edition - 172.16.1.229 - 128 Nodes

File Edit View Configuration Tools Help

Back Forward Home New [F5] Undo [Ctrl+Z] Redo [Ctrl+Y] Properties [F4] Scan Network [F5] Backdoor Scan [F6] Preferences

Device: 172.16.1.229 [172.16.1.229] [172.16.1.229] [172.16.1.229] [172.16.1.229]

Selected Paths: All

File Manager: 172.16.1.229 - Configuration Signature Properties

Property: Component: 172.16.1.229
Property: Configuration Signature

Value: Current Value: 03 02 00 04

Timestamp: Apr 27, 2011 12:58:59 PM
 Change After Trip
 Fail
 Polling Interval: 5 [Units] [Units]
 History: Record [Units]
 Show Value in Table if: No Properties

Status: Current Status: Warning (Exceeded)
 Determine
 Forward Status Up

172.16.1.229 - Configuration Signature Status Config

Property: Component: 172.16.1.229
 Name: Configuration Signature

Status Config: Reference Value: 03 02 00 04

Value Status: Value in Reference Value: [Green] [OK]
 Other Value: [Yellow] [Warning]

Unacknowledged Events

ID	ACK	Type	Category	Time	User	Source	Component	Message
100		Warning	Status Warning	2011-04-27 12:58:59 PM		172.16.1.229	Configuration Signature	Status Inconsistent: Warning: Configuration Signature (03 02 00 04)
101		Warning	Status Warning	2011-04-27 12:58:59 PM		172.16.1.229	Configuration Signature	Status Inconsistent: Warning: Configuration Signature (03 02 00 04)
102		Warning	Status Warning	2011-04-27 12:58:59 PM		172.16.1.229	Configuration Signature	Status Inconsistent: Warning: Configuration Signature (03 02 00 04)
103		Warning	Status Warning	2011-04-27 12:58:59 PM		172.16.1.229	Configuration Signature	Status Inconsistent: Warning: Configuration Signature (03 02 00 04)