

## Firmware update using ACA21 via System Monitor 1

- 2018-02-22 - Classic Switches

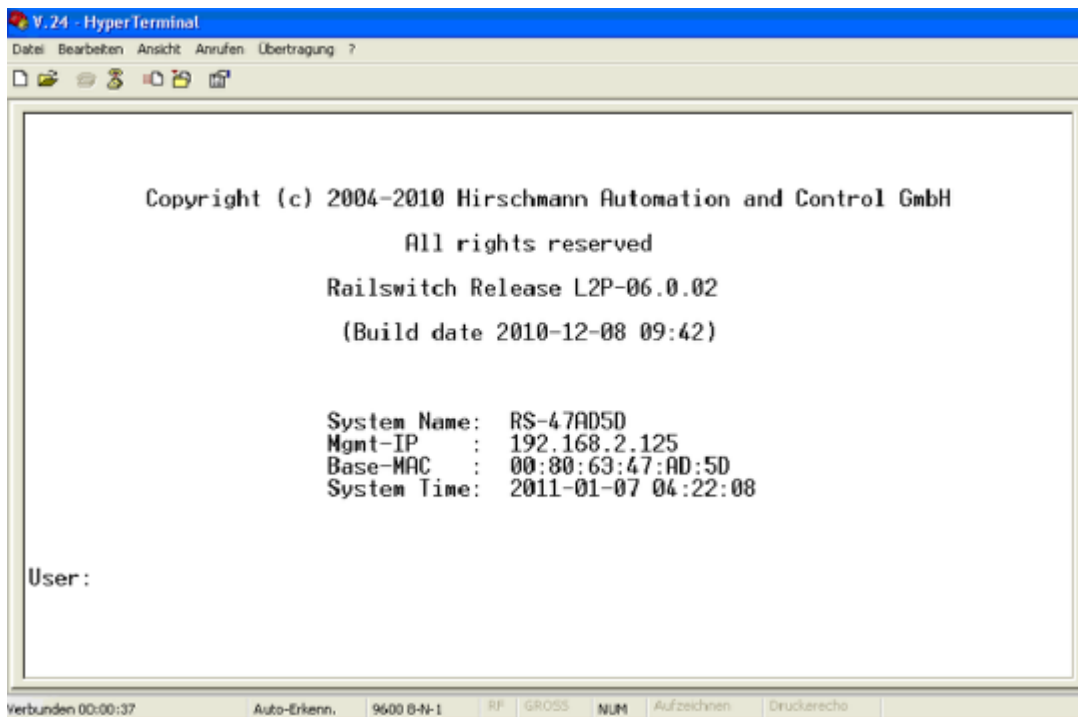
This howto describes the software update using a ACA21 USB stick on platform devices RS20/30/40, RSR20/30, MS20/30, PowerMICE, MACH100/1000/4000 and Octopus (with ACA21-M12) via System Monitor 1.

### **Preparation**

This update method requires an ACA21 or any other compatible USB-stick and a terminal cable for serial access to the device.

1. Copy the desired firmware file (.bin) to the root directory of the USB stick. If placed in subfolders, the switch won't recognize it.
2. Plug the USB-stick into the switch you want to update

### **Serial connection**



Establish a serial connection to the switch using the terminal cable and a terminal application like HyperTerminal, Tera Term or similar.

Press return to connect to the switch, the CLI login screen will be shown.

### **Reboot the device and enter SysMon1**

Reboot the device and follow the serial output.

Press "1" as soon as the message "**Press <1> to enter System Monitor 1 .....**" is shown.

### **System Monitor - Main Menu**

System Monitor 1

(Selected OS: L2P-06.0.02-FINAL (2010-12-08 09:42))

- 1 Select Boot Operating System
- 2 Update Operating System
- 3 Start Selected Operating System
- 4 End (reset and reboot)
- 5 Erase main configuration file
- 6 Show Bootcode information

sysMon1> \_

Select option **2 "Update Operating System"**

## **System Monitor - Update Operating System**

```
Update Operating System from USB or XMODEM
Enter filename (press [RETURN] for XMODEM): /usb0/rs12p.bin
```

Complete the path to the firmware file.

The syntax is **/usb0/<firmware file name.bin>**

For example /usb0/rsL2P.bin

Confirm 2 times by pressing "return"

The firmware will be uploaded, checked for errors, written to the flash and checked again.

**System Monitor - Image uploaded**

```
Enter filename (press [RETURN] for XMODEM): /usb0/rsl2p.bin
Press [RETURN] to start the update
Press [ESC] to cancel the update

<INFO>: OS ID: 99, assigned file name: /usb0/rsl2p.bin
<INFO>: Read 256 bytes of os header data from /usb0/rsl2p.bin
<INFO>: Using buffer of 262144 bytes, max 16167652
.....

<INFO>: OS image /usb0/rsl2p.bin passed all tests (checksum 0x540e1faa)
<INFO>: Now trying to write OS image to flash memory
<INFO>: OS ID: 99, assigned file name in Flash memory: /flash/os_bak.bin
<INFO>: Writing OS image to flash memory, in 75 chunks of max. 65536 bytes
.....
<INFO>: OS image written to flash, now testing checksum...
<INFO>: Using buffer of 262144 bytes, max 16167924
.....

<INFO>: Header data and Image Checksum (0x540e1faa) in Flash memory are correct
<INFO>: SUCCESS: OS image was updated

Hit any key to continue._
```

After the message "**<INFO>: SUCCESS: OS image was updated**" is shown, press any key to return to the main menu.

## Reboot device

```
System Monitor 1
(Selected OS: L2P-06.0.02-FINAL (2010-12-08 09:42))

1 Select Boot Operating System
2 Update Operating System
3 Start Selected Operating System
4 End (reset and reboot)
5 Erase main configuration file
6 Show Bootcode information

sysMon1> _
```

Select option **4 "End (reset and reboot)"** to reboot the device and activate the new firmware.

Wait for the login screen and check the current firmware version.

The update process is completed, you can remove the USB-stick and serial cable.