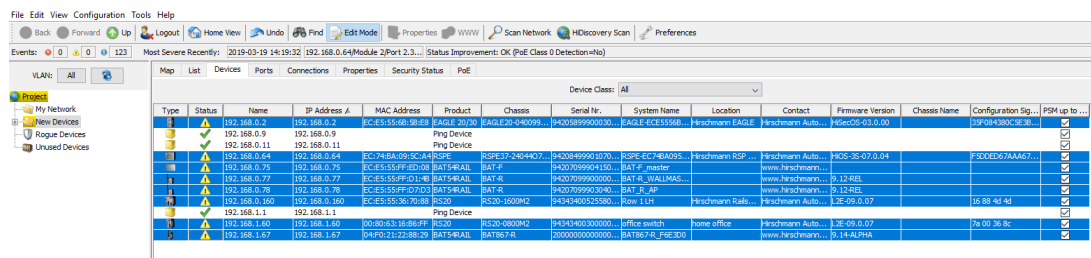


Industrial Hivision Scheduler - Save Device Configurations

John M - 2019-12-23 - Industrial HiVision

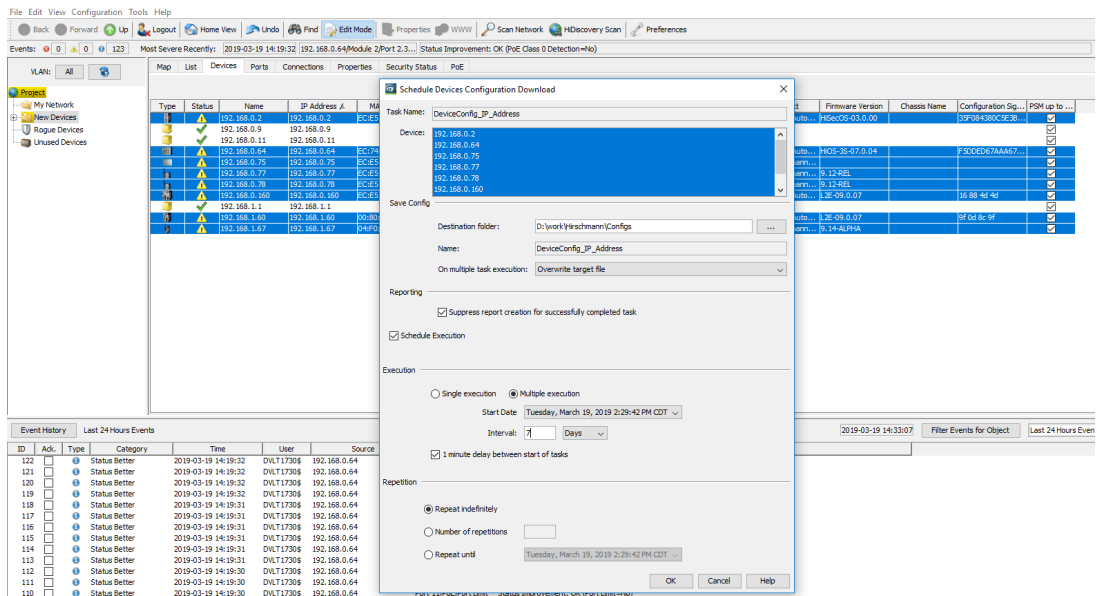
This guide is designed to walk through the steps to configure Hirschmann Industrial HiVision to enable the scheduled remote backup of Configurations of the Hirschmann devices in a project.

1. Once Hivision is running go to the Device tab and highlight the devices that need the configurations saved, right click on one of the highlighted devices and select Save Device Configuration.

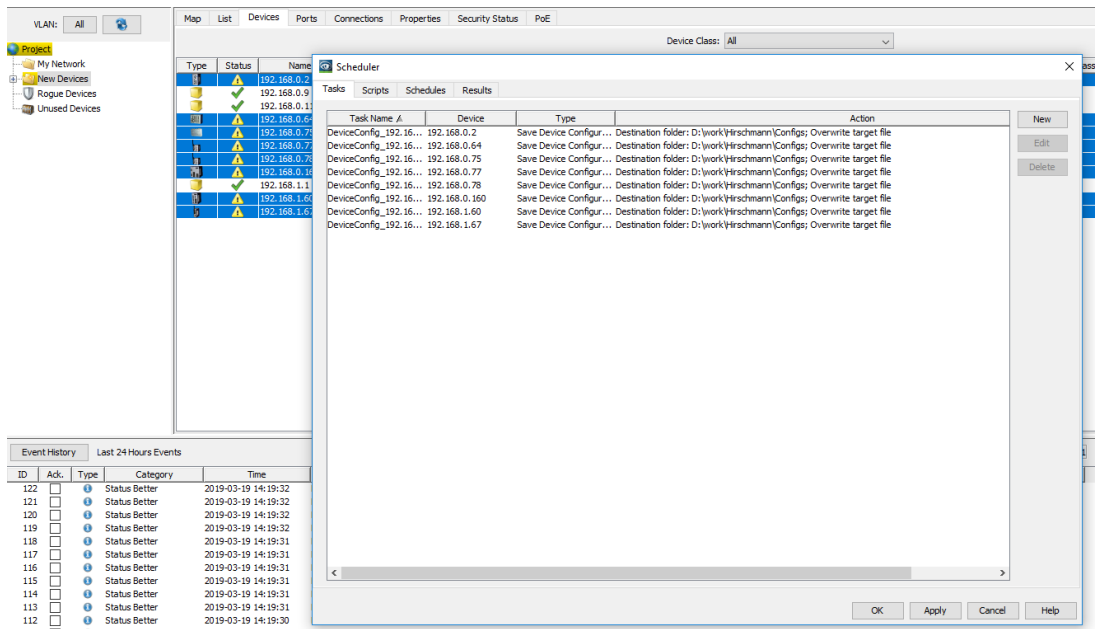


Type	Status	Name	IP Address	MAC Address	Product	Chassis	Serial Nr.	System Name	Location	Contact	Firmware Version	Chassis Name	Configuration Sig.	PSM up to
		192.168.0.2	192.168.0.2	EC-E55548-3848	EAGLE 20/20	EAGLE20-940099...	940589990030...	EAGLE-ECE55568...	Hirschmann EAGLE	Hirschmann Auto...	16Sec05-03.0.00		33f0b439c9e38...	
		192.168.0.9	192.168.0.9		Ping Device									
		192.168.0.11	192.168.0.11		Ping Device									
		192.168.0.14	192.168.0.14	EC-7458A-09-SC44	RSP	RSP37-7404407	94208499901070...	RSP-EC74A095...	Hirschmann RSP	Hirschmann Auto...	16Sec05-07.0.04		F00ED57AA67...	
		192.168.0.75	192.168.0.75	EC-E555FF-ED08	BAT548-ALL	BAT-F	94207099904150...	BAT-F-master		www.hirschmann...				
		192.168.0.77	192.168.0.77	EC-E555FF-D14B	BAT548-ALL	BAT-R	94207099900000...	BAT-R-WALLMAS...		www.hirschmann...	0.12.REL			
		192.168.0.78	192.168.0.78	EC-E555FF-D033	BAT548-ALL	BAT-R	94207099903040...	BAT-R_50		www.hirschmann...	0.12.REL			
		192.168.0.160	192.168.0.160	EC-E55536-70388	RS20	RS20-1000M2	94343400525580...	Row 1 L14	Hirschmann Rals...	Hirschmann Auto...	16Sec05-07		16 88 4d 4d	
		192.168.1.1	192.168.1.1		Ping Device									
		192.168.1.63	192.168.1.63	0080853-16-964F	ES20	ES20-0800M2	94343400300000...	office switch	home office	Hirschmann Auto...	16Sec05-07		78 09 36 8c	
		192.168.1.67	192.168.1.67	04FD2122-38829	BAT548-ALL	BAT674R	20000000000000...	BAT674R_F5E300		www.hirschmann...	0.14-ALPHA			

2. Browse to the location the configurations need to be saved to, set the start time (making sure to leave enough time to finish the schedule before it starts), and frequency the configurations need to be saved. Then make sure all of the other settings are selected properly and click OK.



3. To verify it has been scheduled click on Configuration in the taskbar and select Scheduler, the task tab will show the devices and the task to be performed



4. The schedules tab will show the schedule to perform the tasks.



5. To verify the tasks have been completed click on the results tab.



6. Finally verify the configurations have been saved to the correct location.

