

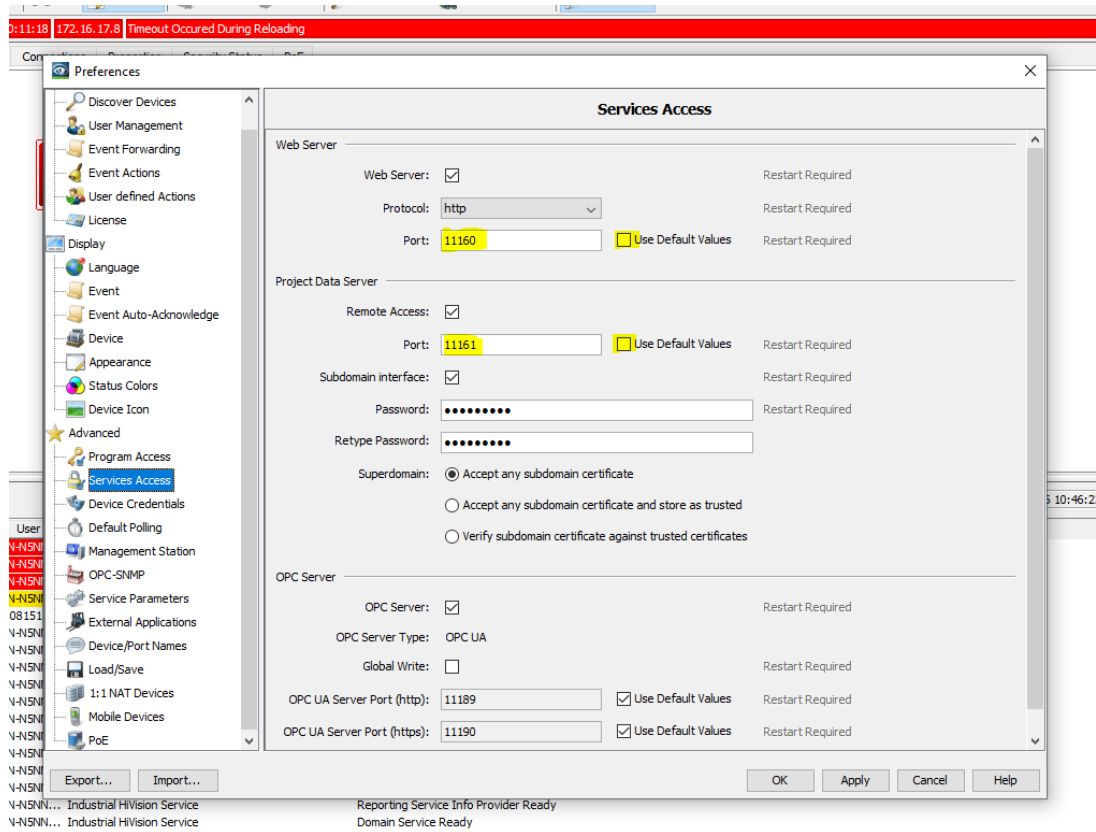
## Remote Access with HiView with changed web server and remote access port

Christoph Strauss - 2022-05-16 - Industrial HiVision

Applies to Industrial HiVision 08.2.00, 08.1.04 or newer

If you change the default ports of the web server and remote access in Industrial HiVision, then you need to specify the ports in the URL as follows.

Configuration Industrial HiVision:



URL in HiView: `http://<ip-address>:<web server port>?project-data-port=<remote access port>`

e.g. <http://172.16.17.100:11160?project-data-port=11161>

HiView -

File Devices Preferences Help

Devices Discovery

Industrial HiVision  
http://127.0.0.1:11160

Industrial HiVision  
http://127.0.0.1:11194

Industrial HiVision  
https://127.0.0.1:11194

Industrial HiVision  
http://127.0.0.1:11160?project-data...

URL: <http://172.16.17.100:11160?project-data-port=11161>

The image shows a screenshot of the HiView software interface. At the top, there is a title bar with the text "HiView -" and standard window control buttons (minimize, maximize, close). Below the title bar is a menu bar with "File", "Devices", "Preferences", and "Help". The main area is divided into two tabs: "Devices" and "Discovery". The "Discovery" tab is active and contains four device cards. Each card features the HiView logo (an eye icon) and the text "Industrial HiVision" followed by a URL. The URLs are: "http://127.0.0.1:11160", "http://127.0.0.1:11194", "https://127.0.0.1:11194", and "http://127.0.0.1:11160?project-data...". At the bottom of the window, there is a blue bar containing a URL field with the text "URL: http://172.16.17.100:11160?project-data-port=11161" and navigation icons (globe, back, forward).