

Rogue Device Detection

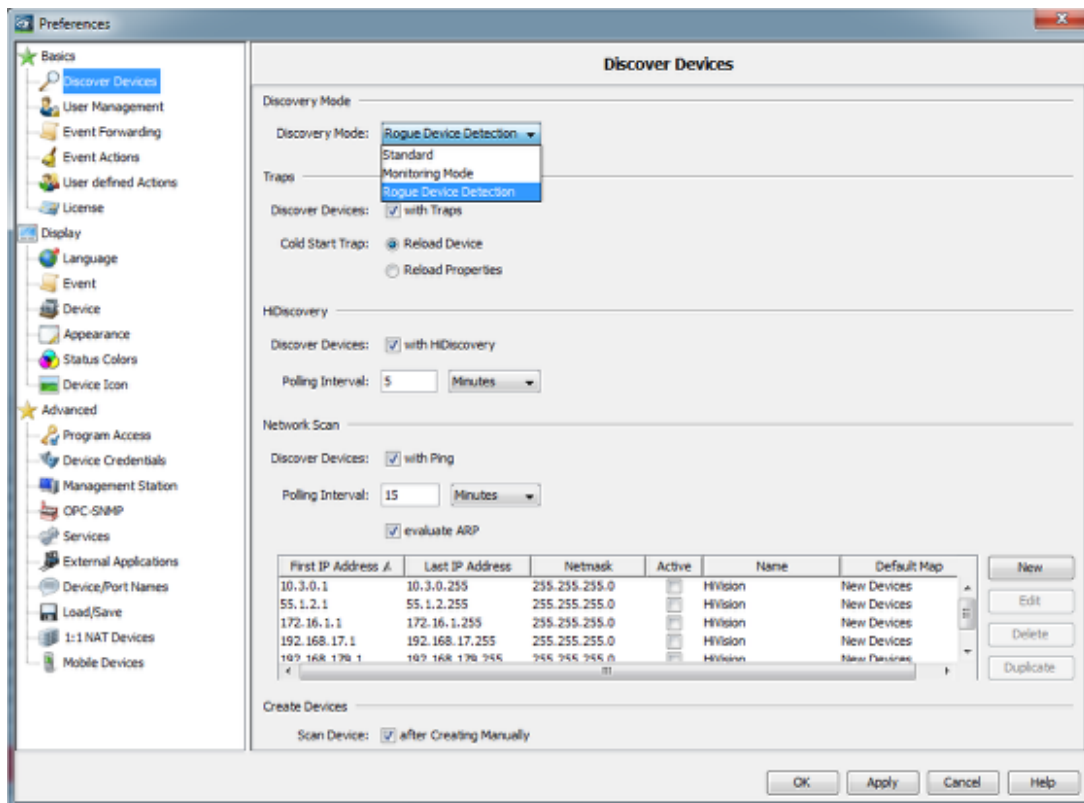
- 2018-02-21 - Industrial HiVision

Rogue Device Detection is available as of IHV v6.0 and can be selected in the preferences dialog.

This discovery mode will detect devices using the selected discovery options but place discovered devices in a separate folder named Rogue Devices.

This feature allows to find devices which do not belong to the monitored network.

Discovery Mode



In the preferences you can select from 3 different discovery modes.

Standard: IHV uses the selected options to discover devices

Monitoring Mode: no automatic scanning but Network Scan, HiDiscovery Scan or add device manually are available

Rogue Device Detection: selected options will be used (at least one option must be selected). Discovered devices will be placed in folder Rogue Devices

Rogue Devices

Hirschmann Industrial HiVision - Rogue Devices - Edit Mode

File Edit View Configuration Tools Help

Back Forward Up Home View IP Find Edit Mode Properties Settings Scan Network HDiscovery Scan Preferences

Events: 0 1 2 3 4 Most Severe Recently: 2015-04-27 13:20:44 172.16.1.220/Protocols/Protocol... Status Impairment: Error (Reachability=No)

Selected VLAN: All

Map List Devices Ports Connections Properties Security Status

172.16.1.220

Projects

- My Network
- Device Networks
- Device Devices
- 172.16.1.1
- 172.16.1.220
- Rogue Devices
- Unused Devices

Unacknowledged Events

ID	Act.	Type	Category	Time	User	Source	Component	Message
535			Device Managed	2015-04-27 13:23:13	DEPSTAR@	Industrial HiVision Service		Device Added to Topology 172.16.1.220, 00:80:43:2F:4E:08
534			Device Managed	2015-04-27 13:23:08	DEPSTAR@	Industrial HiVision Service		Compatible Class Found for Device: IP Address: 172.16.1.220, 00:80:43:2F:4E:08. Device Class: OpenRail, Mach 4000, ...
533			Device Managed	2015-04-27 13:23:07	DEPSTAR@	Industrial HiVision Service		SNMP Access Established 172.16.1.220
532			Device Discovered	2015-04-27 13:23:07	DEPSTAR@	Industrial HiVision Service		New Rogue Device Detected by SNMP Trap 172.16.1.220
531			Device Discovered	2015-04-27 13:23:07	DEPSTAR@	Industrial HiVision Service		New Device Detected by SNMP Trap 172.16.1.220
530			User Intervention	2015-04-27 13:22:26	superuser	Industrial HiVision		Industrial HiVision is Switched to Edit Mode
529			User Intervention	2015-04-27 13:22:12	superuser	Industrial HiVision		Industrial HiVision is Switched to Run Mode
528			User Intervention	2015-04-27 13:22:12	superuser	Industrial HiVision		Device Removed 172.16.1.220, 00:80:43:2F:4E:08
527			User Intervention	2015-04-27 13:22:05	DEPSTAR@	Industrial HiVision		Refresh Device (F5), Device: 172.16.1.220, 00:80:43:2F:4E:08
526			User Intervention	2015-04-27 13:22:05	DEPSTAR@	Industrial HiVision		Connected to subdomain 172.16.1.220
525			Domain	2015-04-27 13:21:47	DEPSTAR@	Industrial HiVision Service		Device has Switched ON
524			SNMP Trap	2015-04-27 13:21:40	DEPSTAR@	172.16.1.220	172.16.1.220	Status Impairment: OK (Reachability=Yes)
523			Status Better	2015-04-27 13:21:38	DEPSTAR@	172.16.1.220	172.16.1.220	Status Impairment: Error (Reachability=No)
522			Status Worse	2015-04-27 13:20:44	DEPSTAR@	172.16.1.220	172.16.1.220	Status Impairment: Error (Reachability=No)
521			Status Worse	2015-04-27 13:20:34	DEPSTAR@	172.16.1.220	172.16.1.220	Status Impairment: Error (Reachability=No)
520			Event Acknowledge	2015-04-27 13:20:29	superuser	Industrial HiVision		Severe Events Acknowledged by User: 181,187,194,196,198-203,210-211,214,216-221,258,269,308,309,311,317-323,...

Log entries for discovered rogue devices are generated