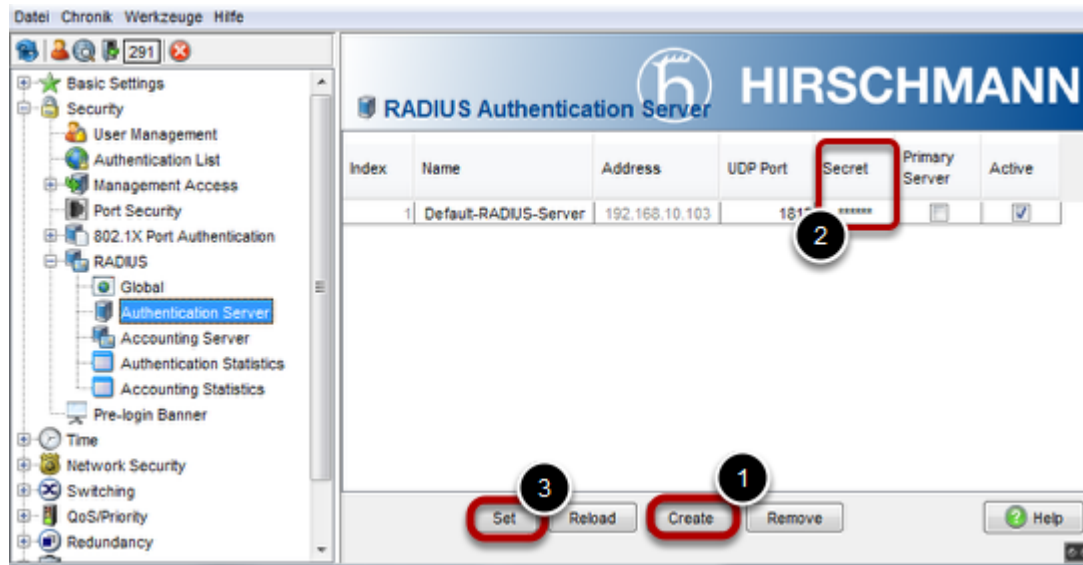


## Using Radius to access Switch Agent (HiOS/HiSecOS - RSP, MSP,EAGLE)

- 2018-02-22 - HiSecOS

This lesson describes how to configure radius for switch management access via telnet and webinterface on devices running HiOS and HiSecOS.

### Configure Radius-Server



- 1.) Click on "Create" and enter IP-address of Radius-Server.
- 2.) Configure "Shared Secret". Please note that this field will be empty after the next step because of security reasons.
- 3.) Click on "Set" in order to send new configuration to switch agent.

### Optional: Use CLI

```
System Name      :
Management IP   :
Subnet Mask     :
Base MAC        :
System Time     :

User:admin
Password:*****

NOTE: Enter '?' for Command Help. Command help displays all options
      that are valid for the particular mode.
      For the syntax of a particular command form, please
      consult the documentation.

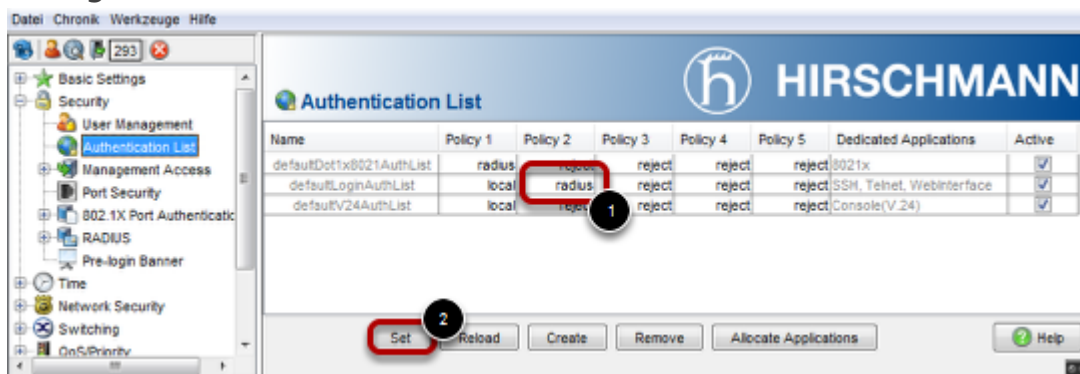
!*(RSP)>enable
!*(RSP)#configure
!*(RSP)(Config)#radius server auth add 1 ip
!*(RSP)(Config)#radius server auth modify 1 secret
Enter secret (16 characters max): *****
Re-enter secret: *****
Shared secret changed!
!*(RSP)(Config)#
```

Please use following command:

**radius server auth add 1 ip <ip-address>**

**radius server auth modify 1 secret**

### Configure Authentication List



- 1.) Configure "defaultLoginAuthList" and insert "radius" as a policy.
- 2.) Click on "Set" in order to send new configuration to switch agent.

### Optional: Use CLI

```
User:admin
Password:*****

NOTE: Enter '?' for Command Help.  Command help displays all options
      that are valid for the particular mode.
      For the syntax of a particular command form, please
      consult the documentation.

!*(RSP)>enable
!*(RSP)#configure
!*(RSP)(Config)#radius server auth add 1 ip
!*(RSP)(Config)#radius server auth modify 1 secret
Enter secret (16 characters max): *****
Re-enter secret: *****
Shared secret changed!
!*(RSP)(Config)#authlists set-policy defaultLoginAuthList local radius
!*(RSP)(Config)#
```

Please use following command:

**authlists set-policy defaultLoginAuthList local radius**

## Radius Configuration

### Service-Types

Service-Type := Administrative-User „admin“

Service-Type := Login-User „operator“

Service-Type := NAS-Prompt-User „user“

No Service-Type reject login