

VPN with LANCOM Advanced VPN Client

- 2024-07-31 - HiSecOS

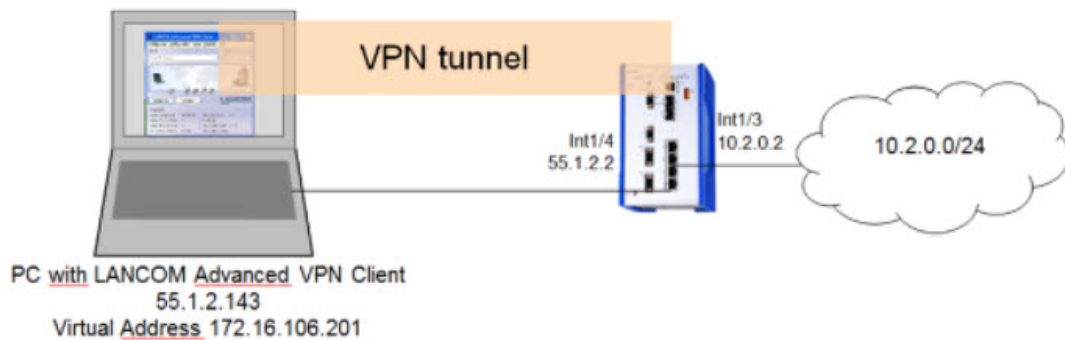
This lesson describes how to configure a VPN using Hirschmann EAGLE20/30 and the LANCOM Advanced VPN Client using x.509 certificates.

Software versions used:

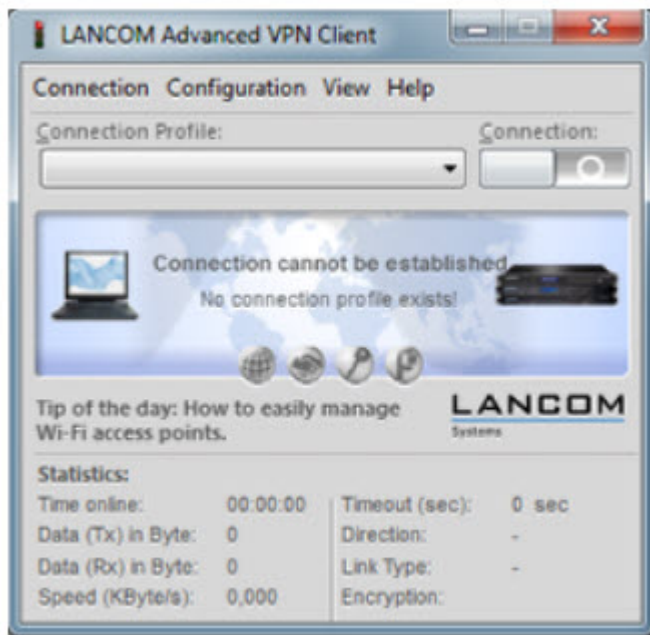
EAGLE20/30 firmware v02.0.01

Lancom Advanced VPN Client v3.00 Build 21499

Network plan



Install and start LANCOM Advanced VPN Client

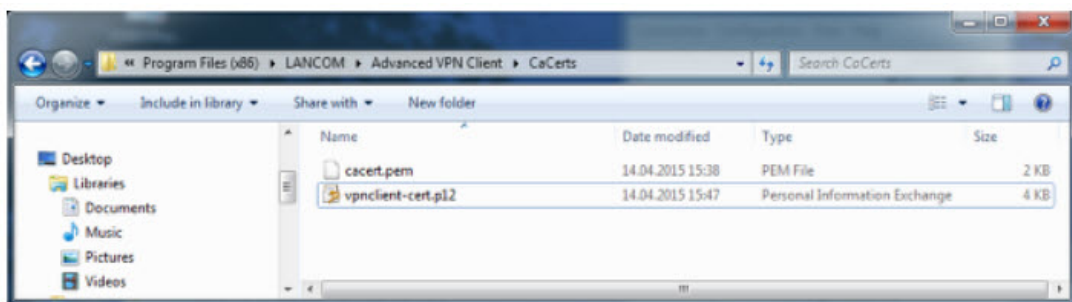


The LANCOM Client with a 30 day evaluation period can be downloaded from

<http://www.lancom-systems.de>

After installation start the LANCOM VPN Client.

Import Certificates

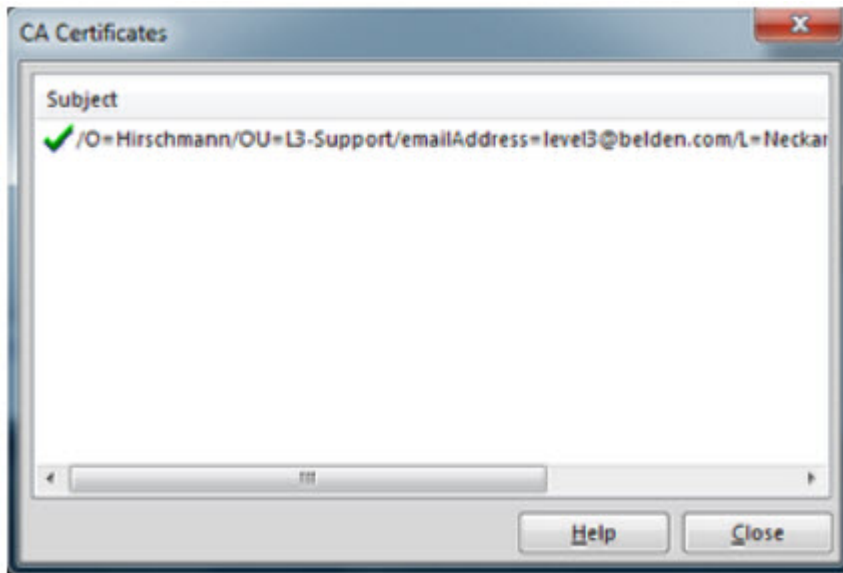


Copy the PEM export of the CA (in our example **cacert.pem**) and the PKCS#12 export of the LANCOM Client certificate (in our example **vpnclient-cert.p12**) in the CaCerts directory:

C:\Program Files (x86)\LANCOM\Advanced VPN Client\CaCerts

Note: The file extension of the CA export must be **.pem** otherwise the LANCOM Client will not find the CA.

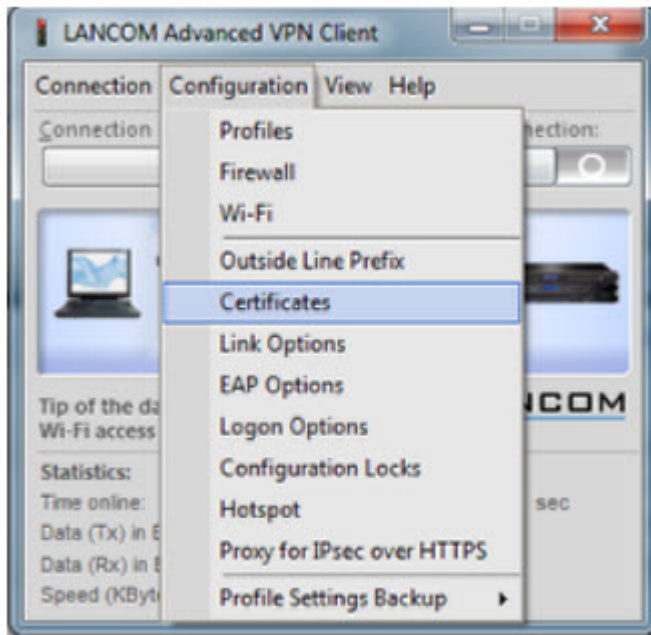
CA Certificates



To verify if the LANCOM Client could load the CA, select **Connection** -> **Certificates** -> **Display CA Certificates** from the menu.

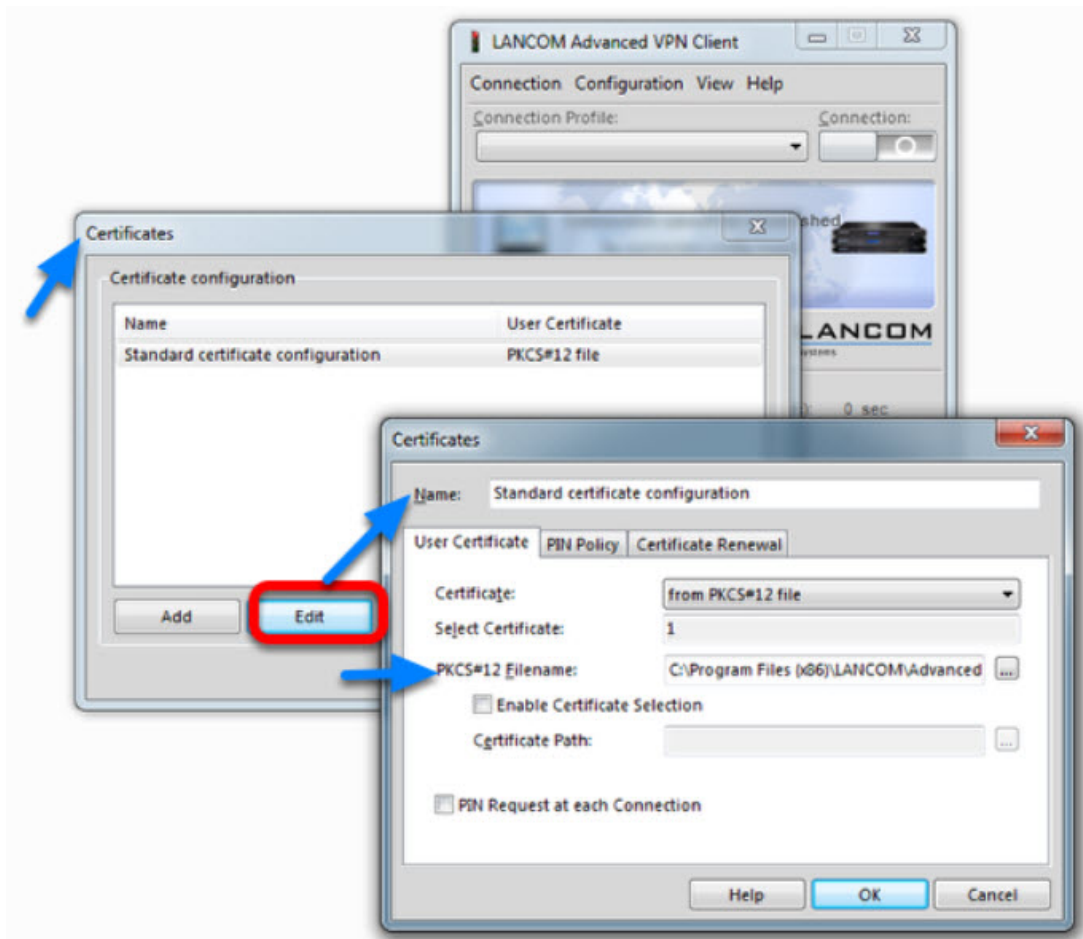
The distinguished name of the CA should be displayed, marked with a green checkmark. Click **Close**.

Certificates Configuration



Select **Configuration** -> **Certificates** from the menu.

Certificate Selection



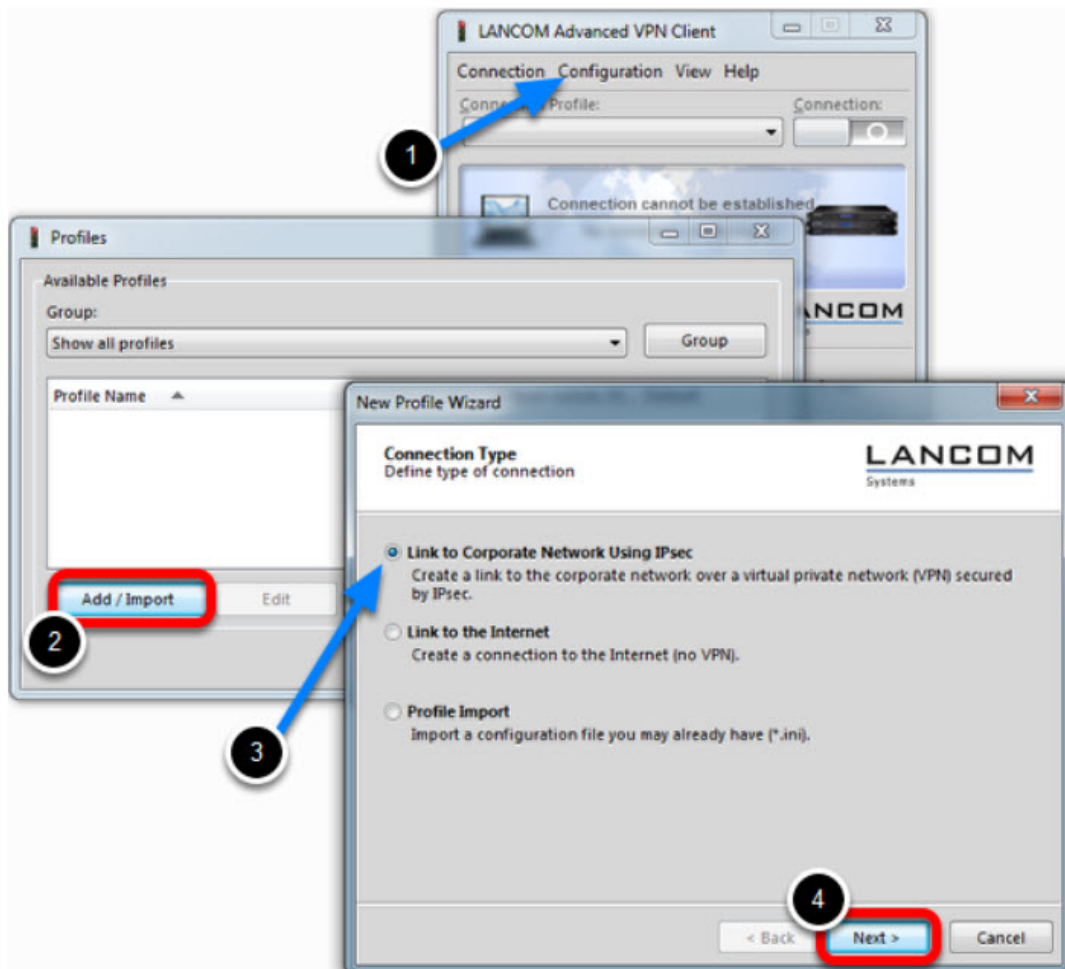
Highlight the **Standard certificate configuration** and click **Edit**.

Set the **PKCS#12 filename** in our example C:\Program Files (x86)\LANCOM\Advanced VPN Client\CaCerts\vpnclient-cert.p12.

Click **OK**.

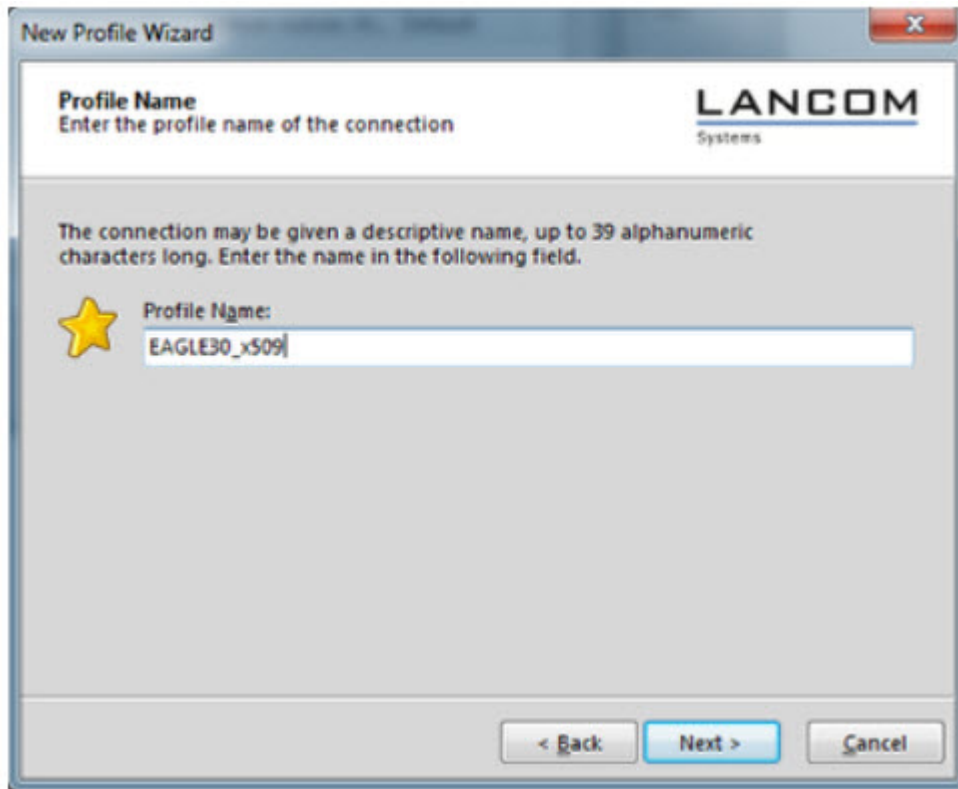
Close the **Certificates** configuration window.

Creating a new profile



1. Select from the menu **Configuration -> Profiles**
2. Click **Add / Import** to create a new profile
3. Select **Link to Corporate Network Using IPsec**
4. Click **Next**

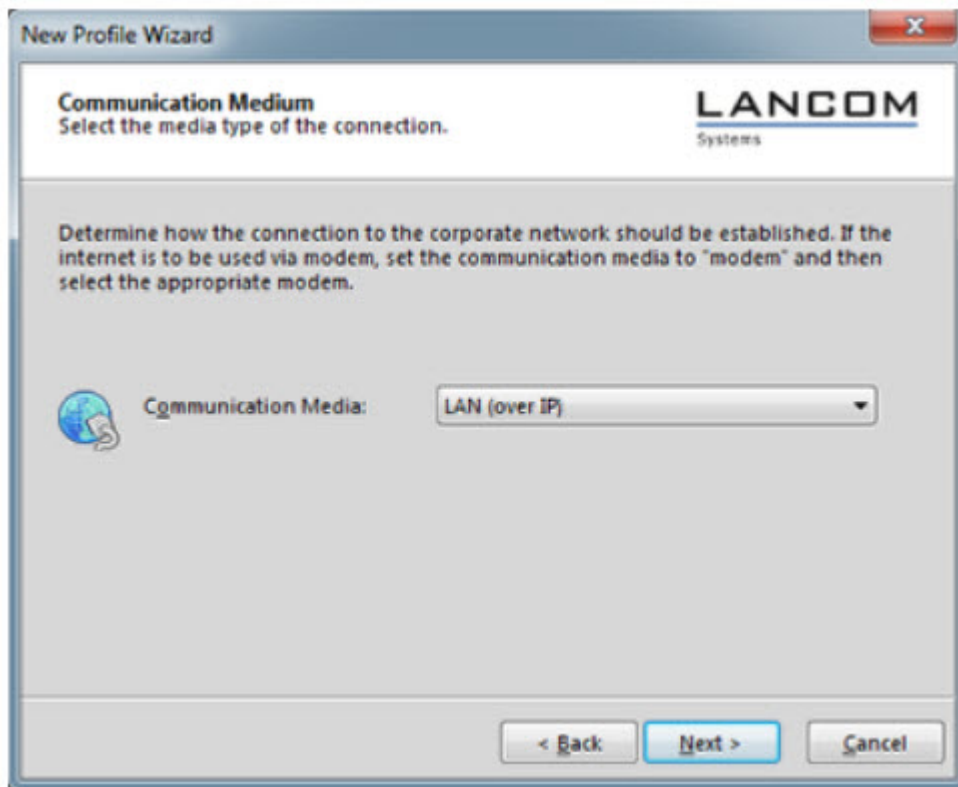
Profile Name



Enter a **Profile Name**

Click **Next**

Communication Medium



Select **LAN (over IP)** as communication media

Click **Next**


VPN Gateway Parameters

New Profile Wizard

VPN Gateway Parameters
To which VPN gateway should the connection be established?

LANCOM
Systems

Enter the DNS name (i.e. vpnserver.domain.com) or the official IP address (i.e. 212.10.17.29) of the VPN gateway you want to connect to.
Using Extended Authentication (XAUTH) you can enter the user ID and password for the authentication. If no authentication data are entered they will be requested when establishing the connection.

 **Gateway (Tunnel Endpoint):**
55.1.2.2

Extended Authentication (XAUTH)

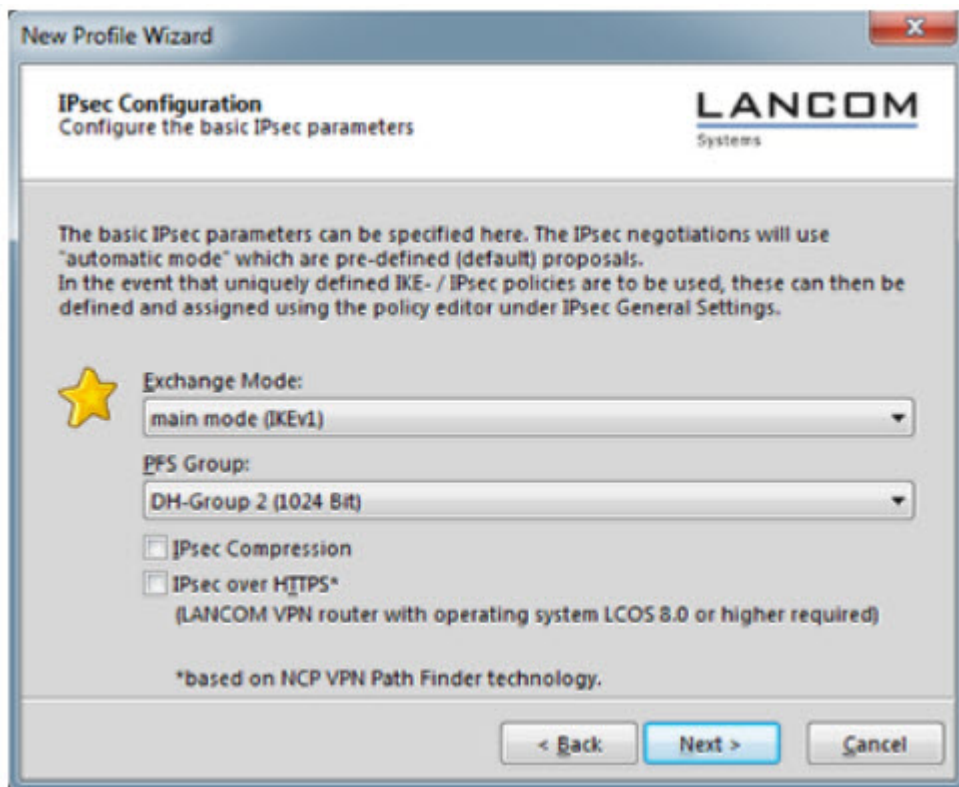
 **User ID:**

Password: _____ **Password (confirm):** _____

< Back Next > Cancel

Enter the **Gateway** to which the connection should be established. Could be an IP address or DynDNS name.

IPsec Configuration



Set the **Exchange Mode** to **main mode (IKEv1)**

Set **PFS Group** to **DH-Group 2 (1024 Bit)**

Click **Next**

Local Identity (IKE)

New Profile Wizard

Pre-shared Key
Common Secret for Authentication

LANCOM
Systems

A shared secret or pre-shared key is used to encrypt the connection. This then needs to be identically configured on both sides (VPN client and VPN gateway).

Enter the appropriate value for the IKE ID according to the selected ID type.

Pre-shared Key

Shared Secret:

Confirm Secret:

Local Identity (IKE)

Type:

ID:

< Back Next > Cancel

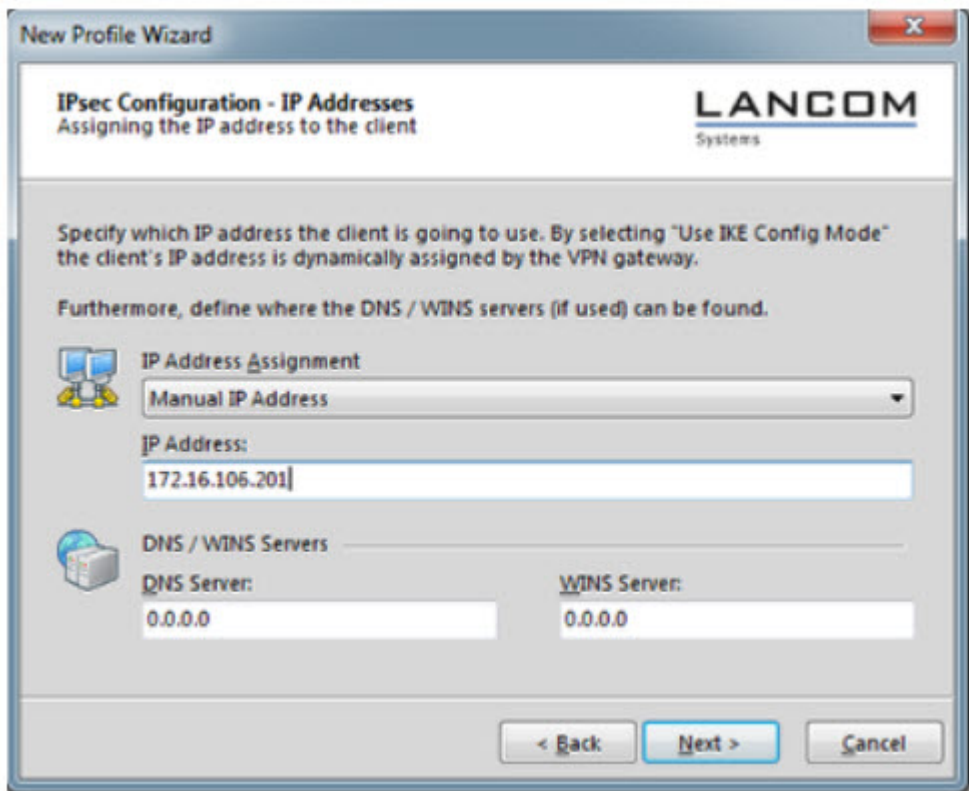
Delete the pre-shared keys

Set the Type to **ASN1 Distinguished Name**

Using the test certificates, copy the DN **/C=DE/ST=BW/O=Hirschmann/OU=L3-Support/CN=VPNCLIENT** in the **ID** field

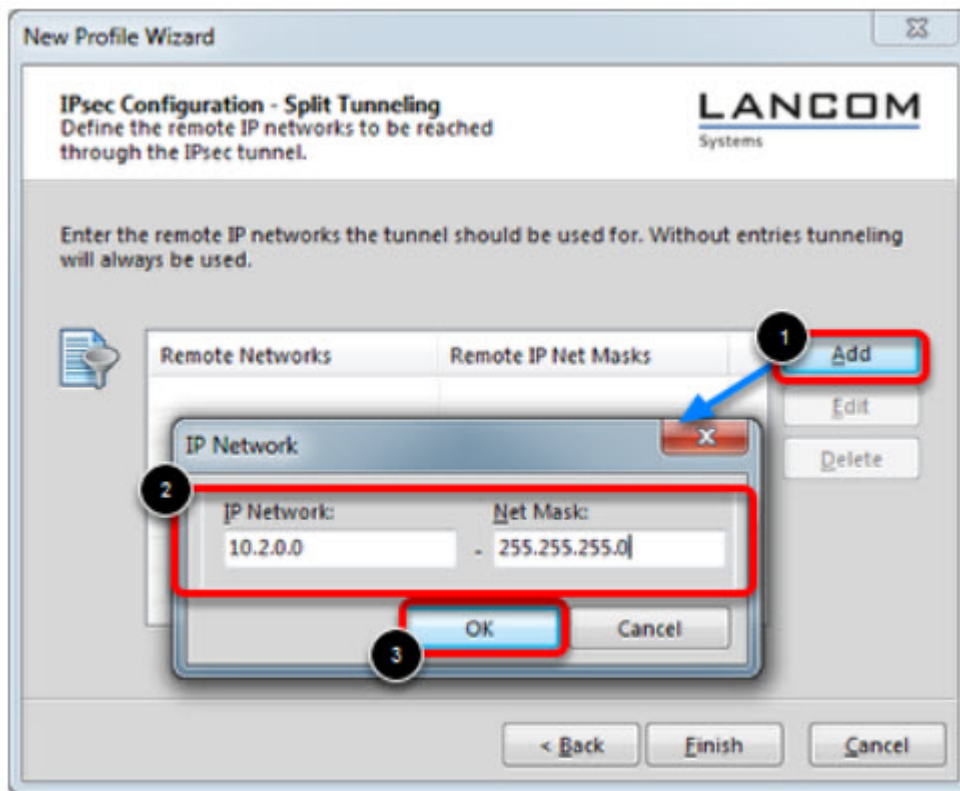
Click **Next**

IPsec Configuration - IP Addresses



Set the **IP Address Assignment** to **Manual IP Address**.

IPsec Configuration - Split Tunneling

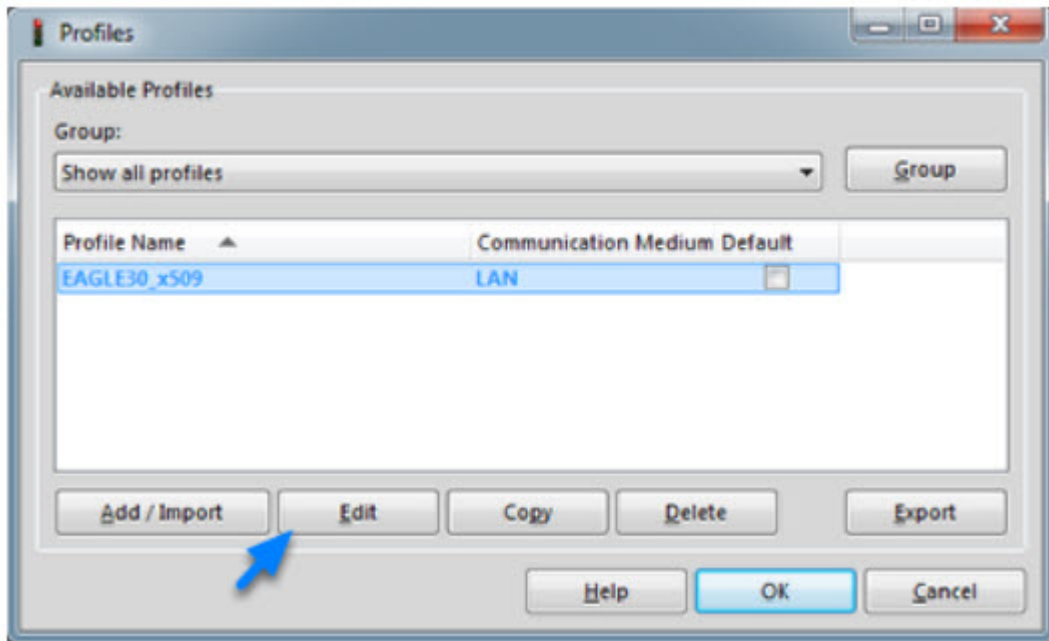


Define the remote IP network to be reached through the IPsec tunnel.

In our example 10.2.0.0/24.

Click Finish.

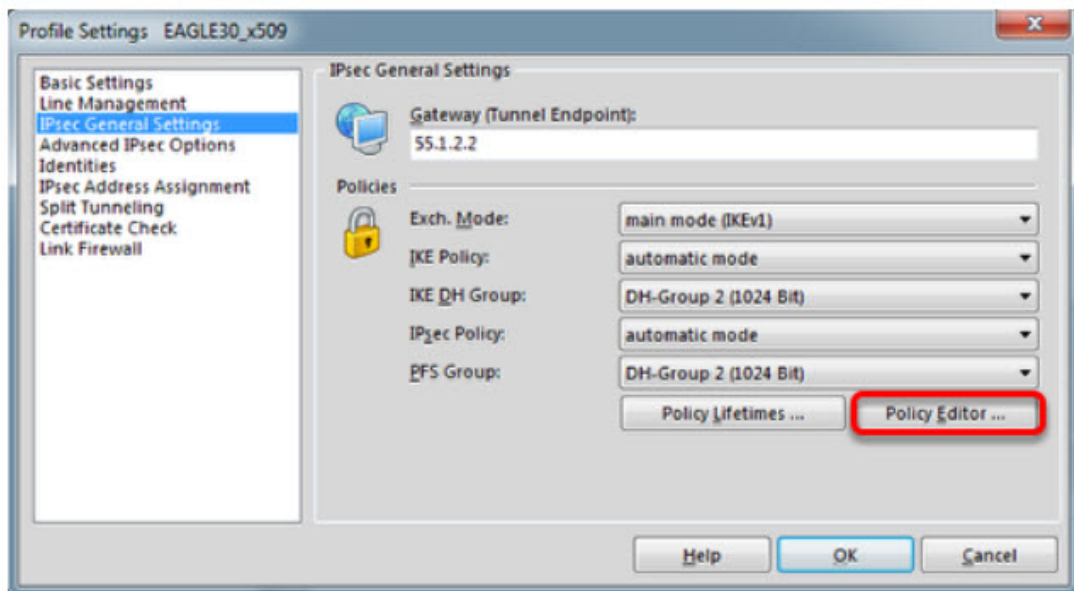
Profile Window



The new profile is created and displayed in the **Profile** window

Highlight the profile and click **Edit**.

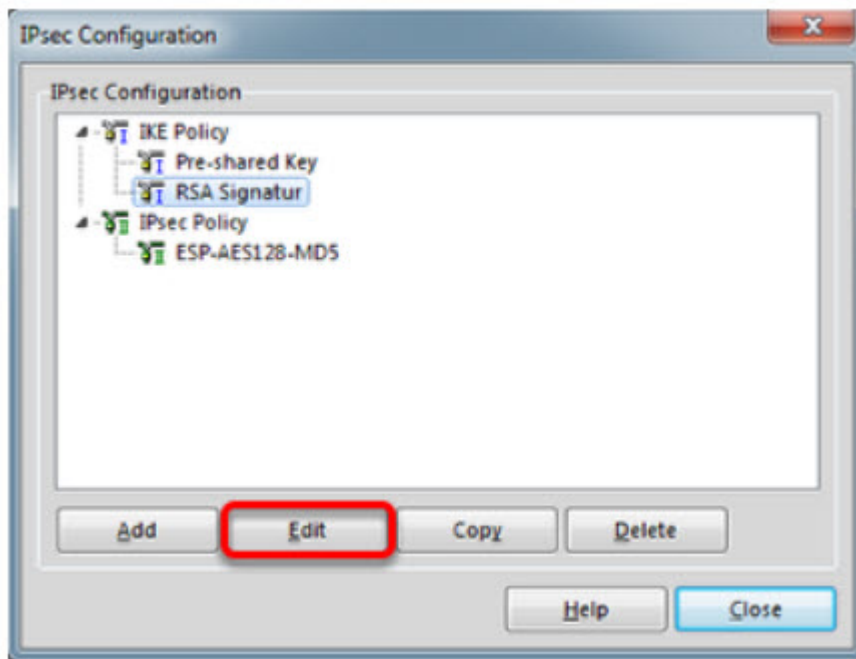
Profile Settings



Highlight **IPsec General Settings** in the left pane.

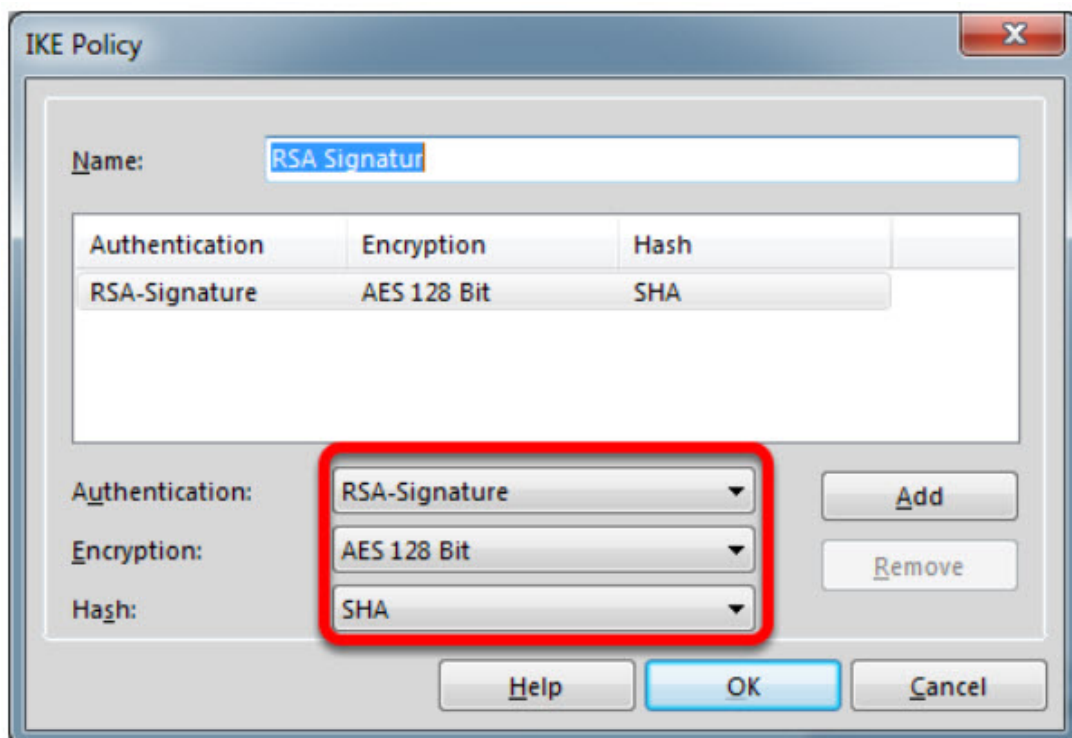
Click **Policy Editor**

IKE Policy Settings



Highlight **RSA Signatur** in the IKE Policy

Click **Edit**

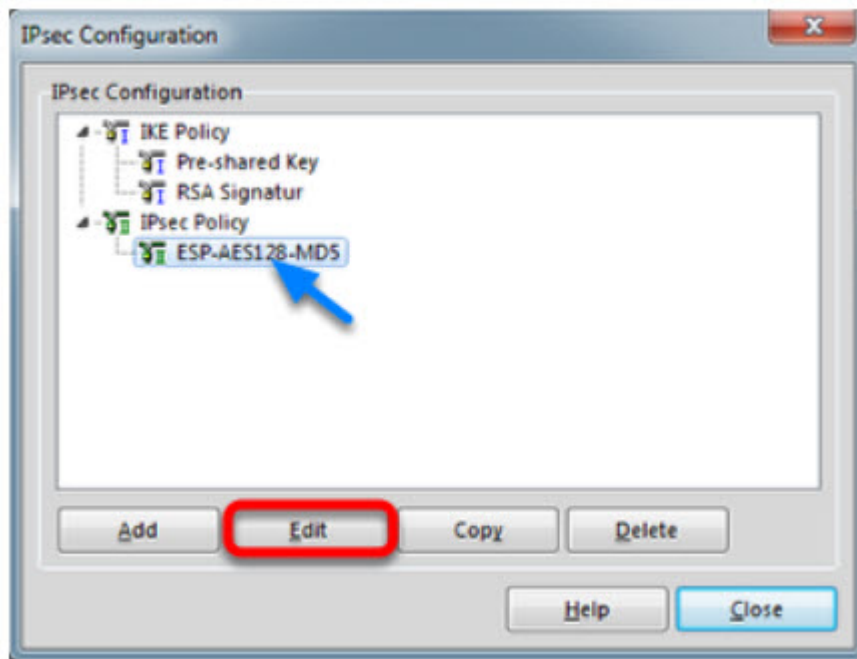


Set **Encryption** to **AES 128 Bit**.

Set **Hash** to **SHA**.

Note: The specified encryption and hash algorithms must correspond to the settings in the EAGLE

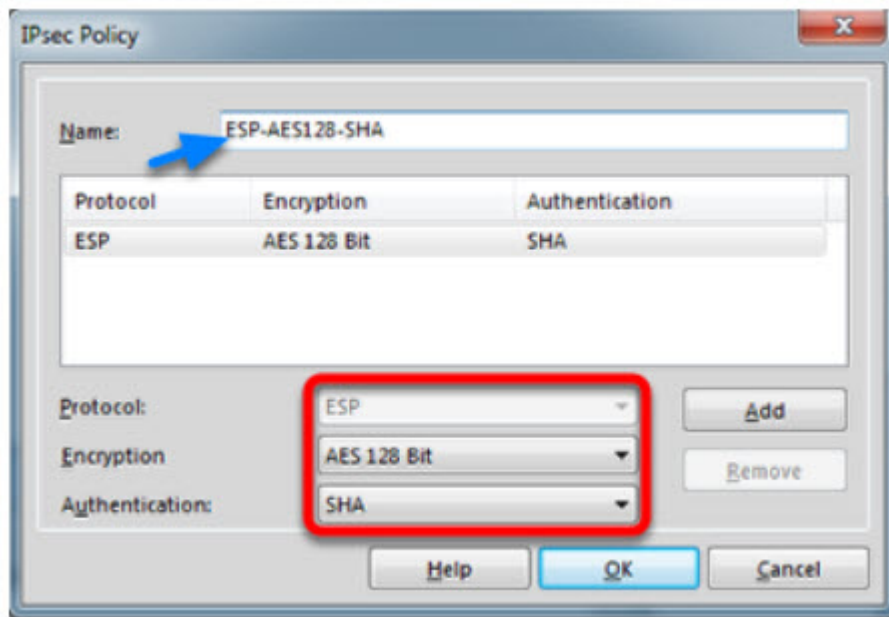
IPsec Policy Settings



Highlight the entry **ESP-AES128-MD5** in the **IPsec Policy** tree.

Click **Edit**.

IPSec Policy



Change the **Name** to **ESP-AES128-SHA**.

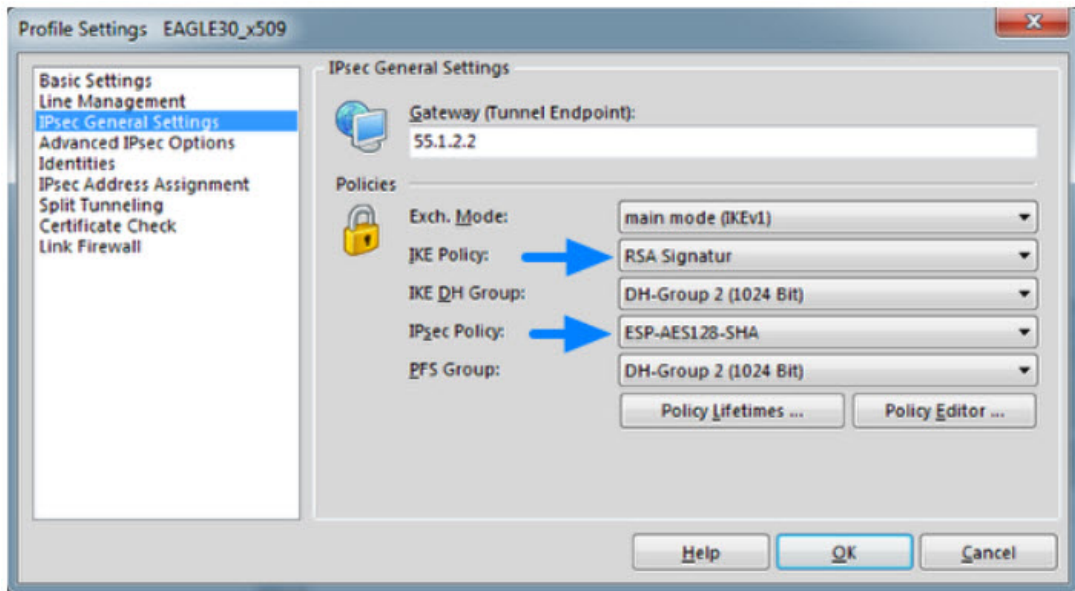
Set **Encryption** to **AES-128 Bit**.

Set **Authentication** to **SHA**.

Click **OK**.

Close the IPsec Configuration window.

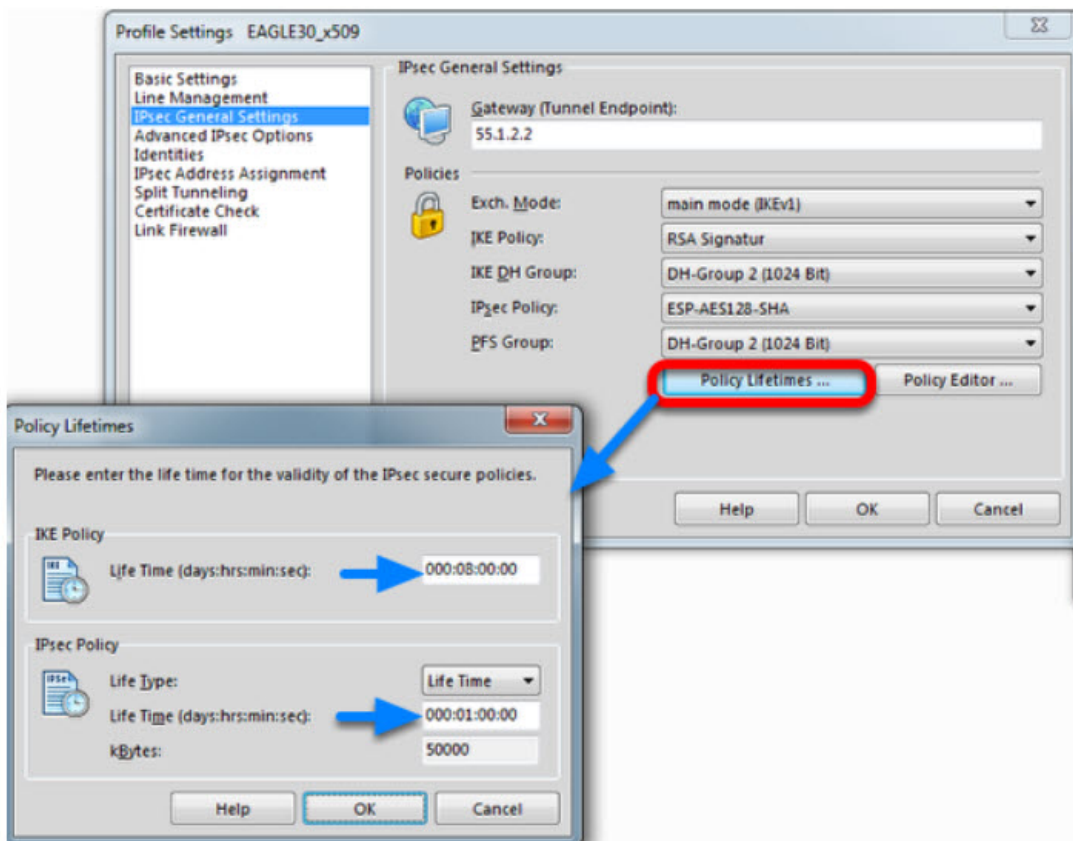
Select IKE and IPsec Policy



Set the IKE Policy to **RSA Signature**

Set the IPsec Policy to **ESP-AES 128-SHA**

Policy Lifetimes



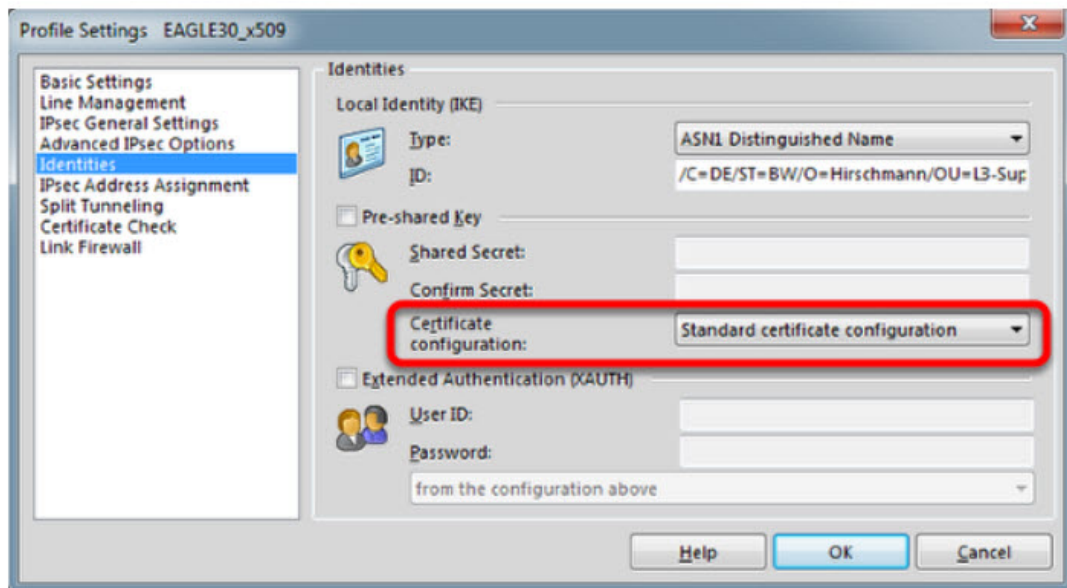
Click the button **Policy Lifetimes**.

Change the **IKE Policy Life Time** to 8 hours

Change the **IPsec Policy Life Time** to **1 hour**.

Click **OK**.

Profile Settings - Identities



Navigate to **Identities**.

Select **Standard certificate configuration**.

Click **OK**.

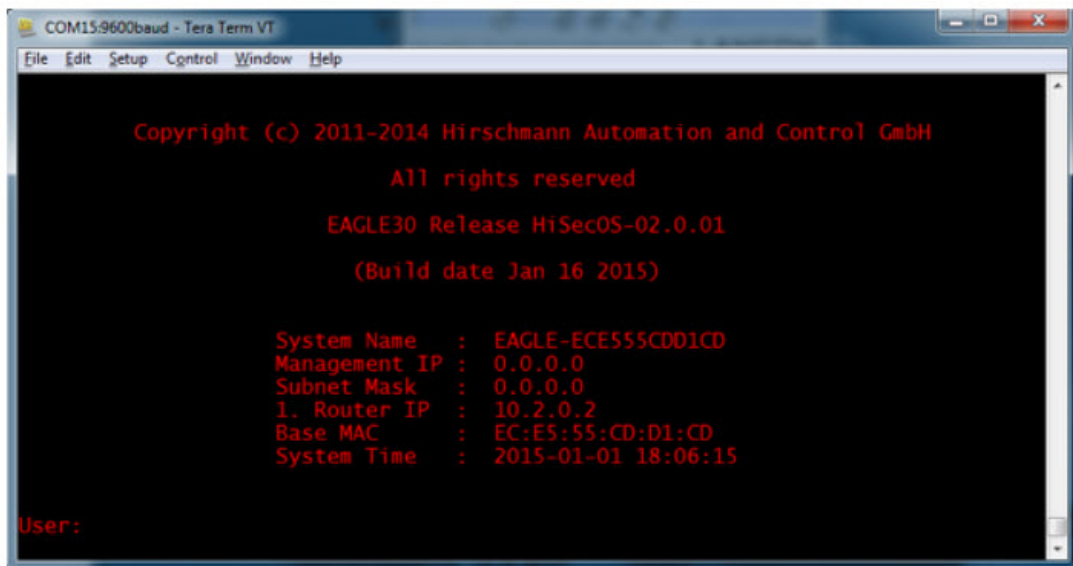
Click **Ok** to close the **Profile** Window.

LANCOM Client configured



The LANCOM Client configuration is finished

EAGLE20 Configuration



The screenshot shows a terminal window titled "COM15:9600baud - Tera Term VT". The output text is as follows:

```
Copyright (c) 2011-2014 Hirschmann Automation and Control GmbH
All rights reserved
EAGLE30 Release HiSecOS-02.0.01
(Build date Jan 16 2015)

System Name   : EAGLE-ECE555CDD1CD
Management IP : 0.0.0.0
Subnet Mask   : 0.0.0.0
1. Router IP  : 10.2.0.2
Base MAC      : EC:E5:55:CD:D1:CD
System Time   : 2015-01-01 18:06:15

User:
```

1. Set IP addresses of the router interfaces accordingly.

In our example: Int1/3 10.2.0.2/24; Int1/4: 55.1.2.2/24

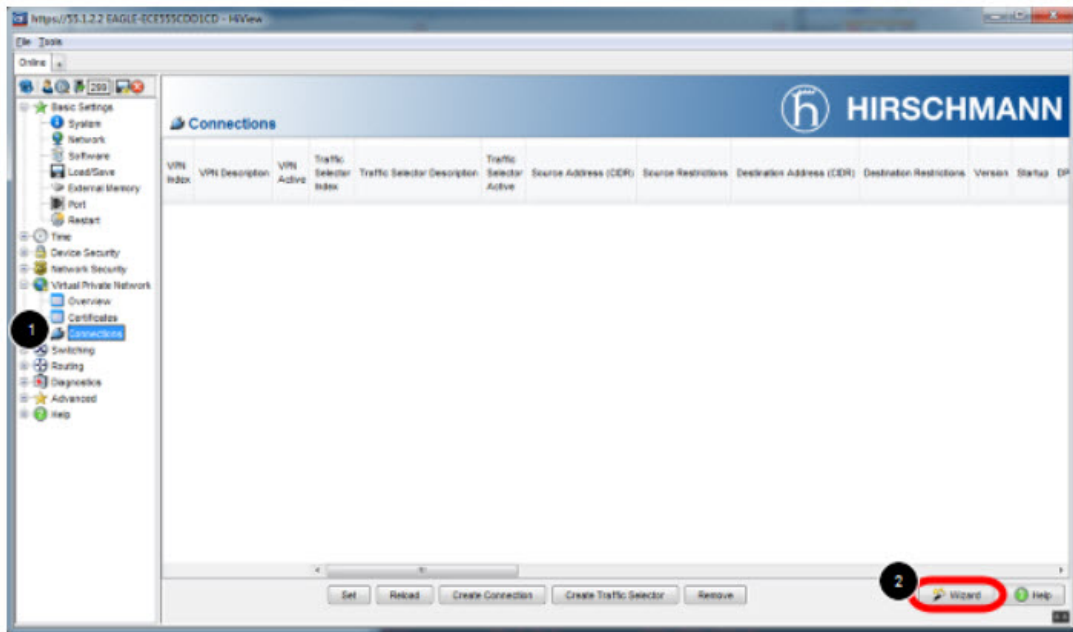
2. Switch the EAGLE30 into router mode

Starting from a default configuration the CLI commands to configure the device via serial connection are:

```
!*(EAGLE)>enable
!*(EAGLE)#configure
!*(EAGLE)(Config)#interface 1/3
!*(EAGLE)((Interface)1/3)#ip address primary 10.2.0.2 255.255.255.0
!*(EAGLE)((Interface)1/3)#ip routing
!*(EAGLE)((Interface)1/3)#exit
!*(EAGLE)(Config)#interface 1/4
!*(EAGLE)((Interface)1/4)#ip address primary 55.1.2.2 255.255.255.0
!*(EAGLE)((Interface)1/4)#ip routing
!*(EAGLE)((Interface)1/4)#exit
!*(EAGLE)(Config)#ip routing
```

3. Login to the webinterface of the EAGLE30 from the int1/3 (IP 10.2.0.2)

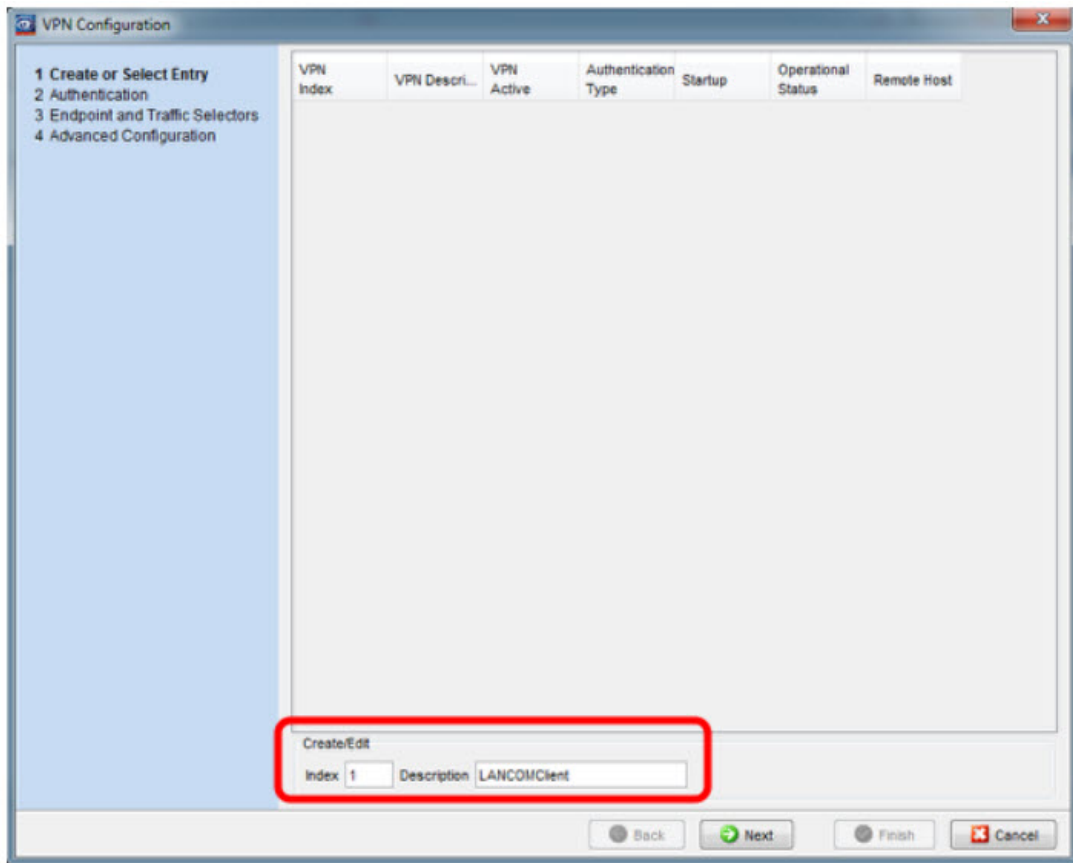
VPN Configuration Web Interface



1. Navigate in the web interface tree to **Virtual Private Network -> Connections**.

2. Open the Wizard

VPN - Basic Settings



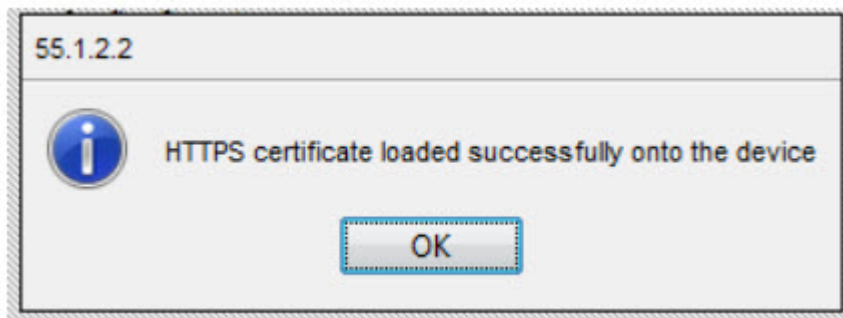
Specify the index and description of the VPN connection.

Click Next

Upload Certificate/Key

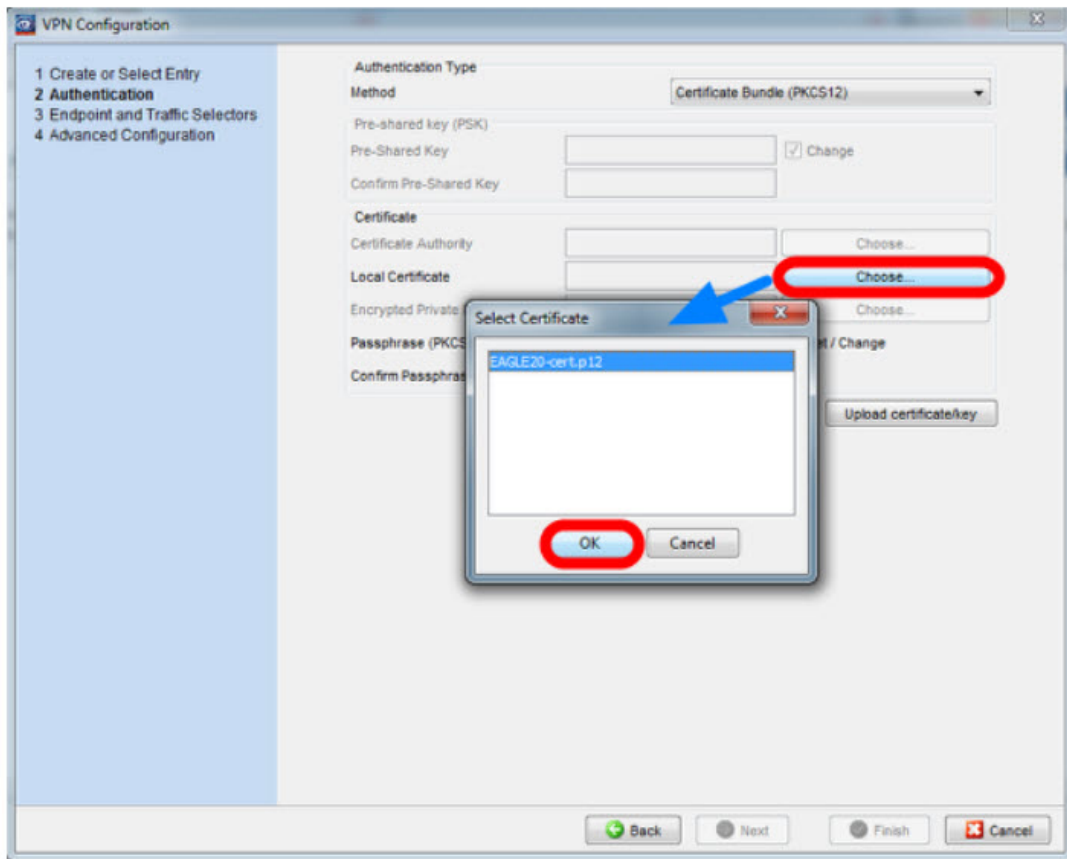
1. Select **Certificate Bundle (PKCS12)** from the Authentication Method drop-down box.
2. Click on **Upload certificate/key**
3. Specify the location of PKCS12 file and passphrase. The passphrase of the test certificate is 'vpnclient'.
4. Click OK

Upload successful



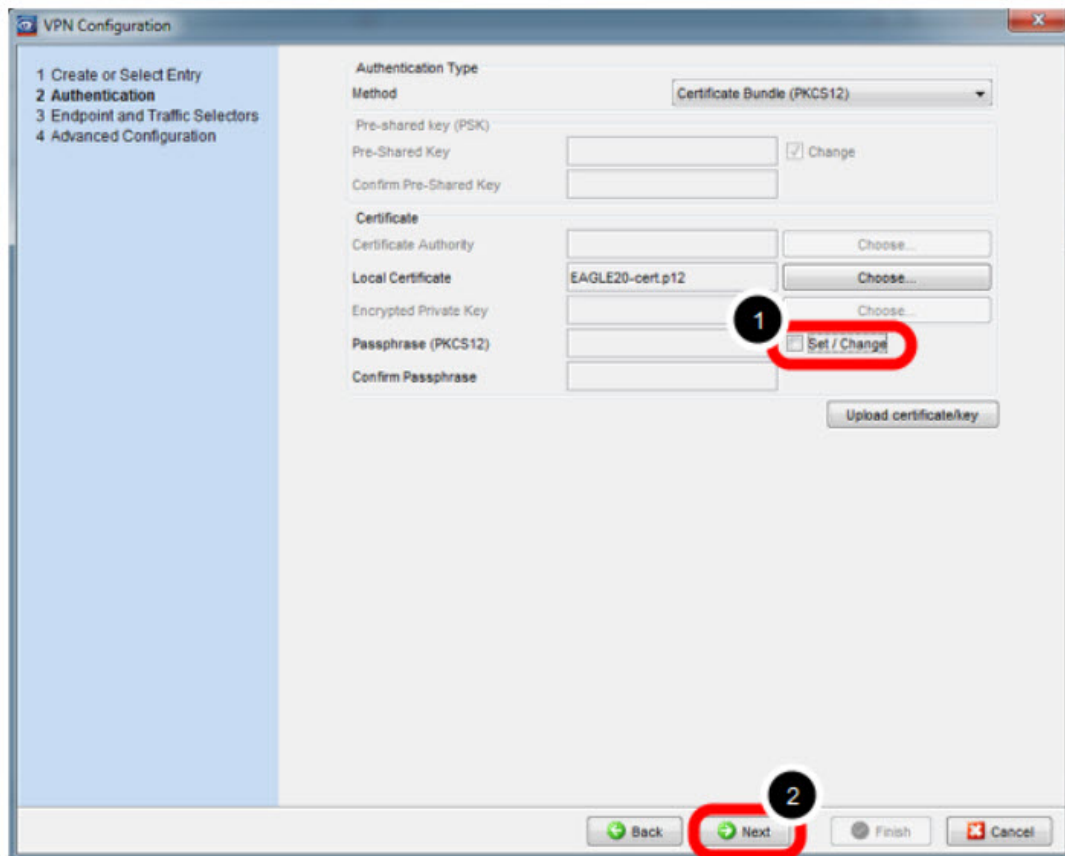
If the certificate file was uploaded successfully you see a confirmation message. Click ok.

Select Local Certificate



Click **choose** and select the local certificate.

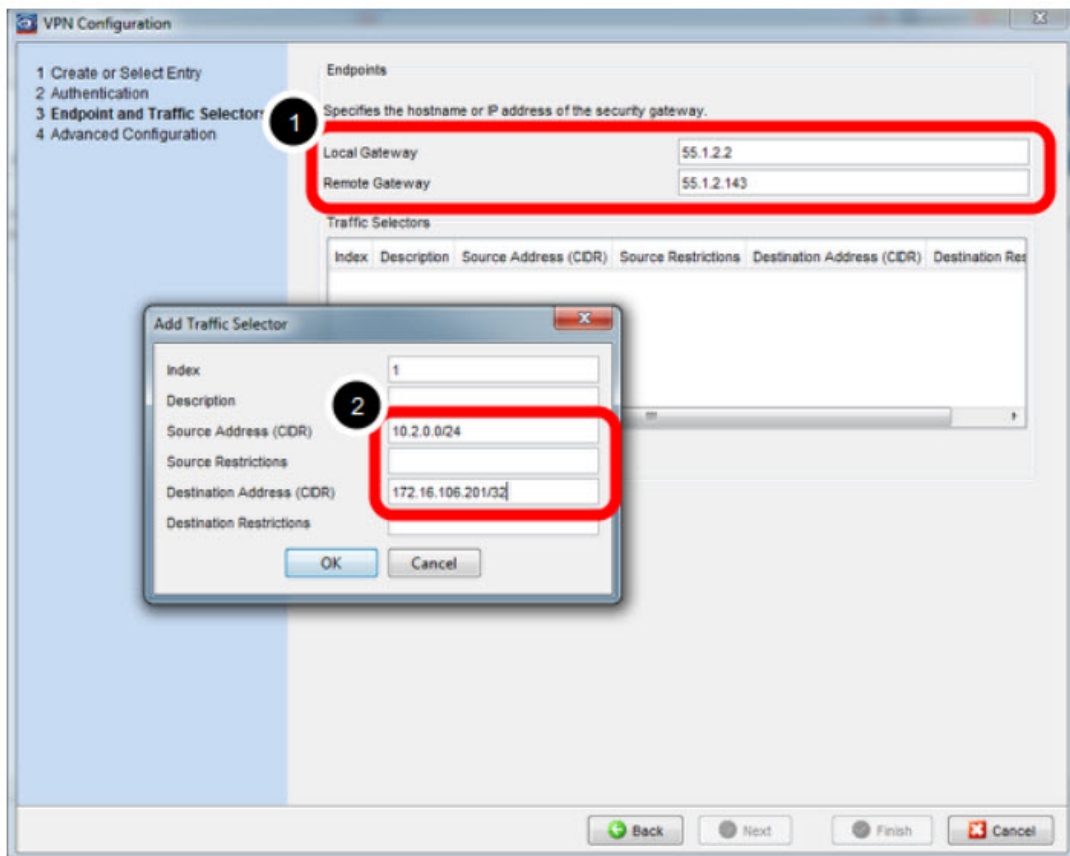
Uncheck Set/Change Passphrase



1. uncheck **Set/Change**

2. click **Next**

Endpoint and Traffic Selectors



1. Specify local and remote gateway addresses.

In our example

Local Gateway: 55.1.2.2

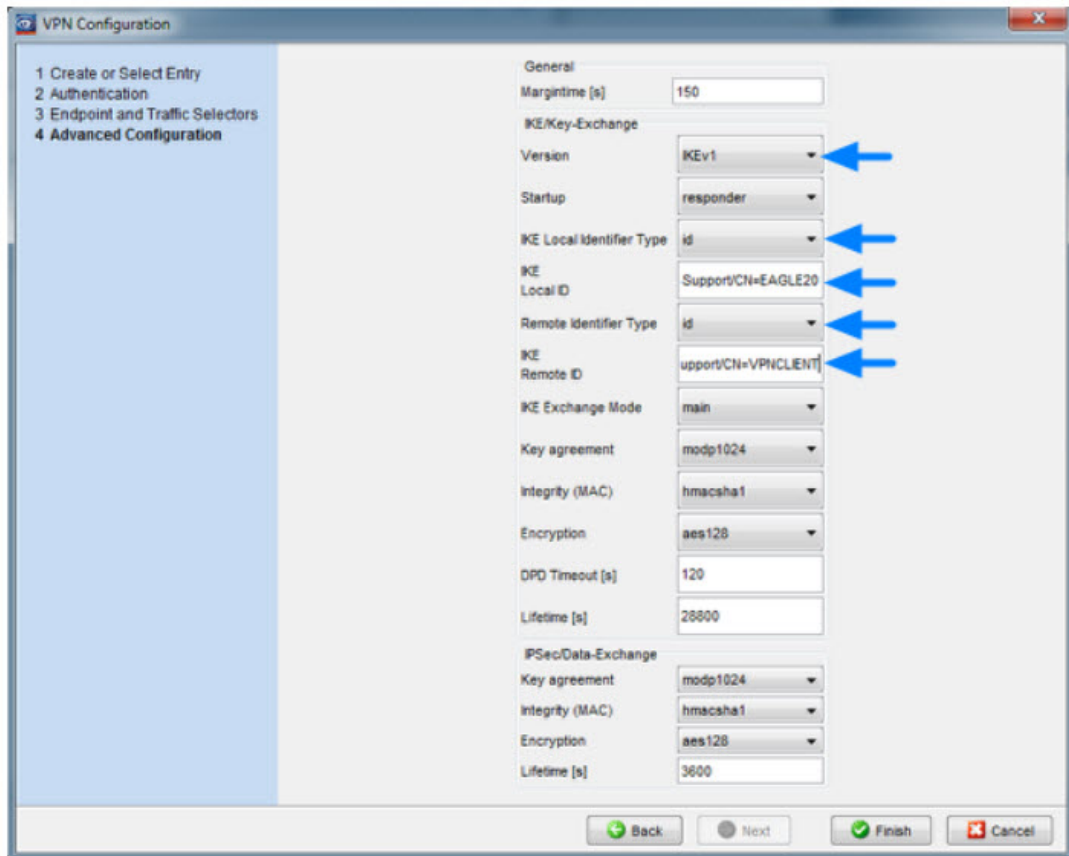
Remote Gateway 55.1.2.143

2. Add Traffic Selector with

Source Address (CIDR): 10.2.0.0/24

Destination Address (CIDR): 172.16.106.201/32 (virtual address)

Advanced Configuration



Set IKE Version 1 and specify the local and remote IDs (ASN1 DN of the certificates -see certindex.txt)

Version: **IKEv1**

IKE Local Identifier Type: **id**

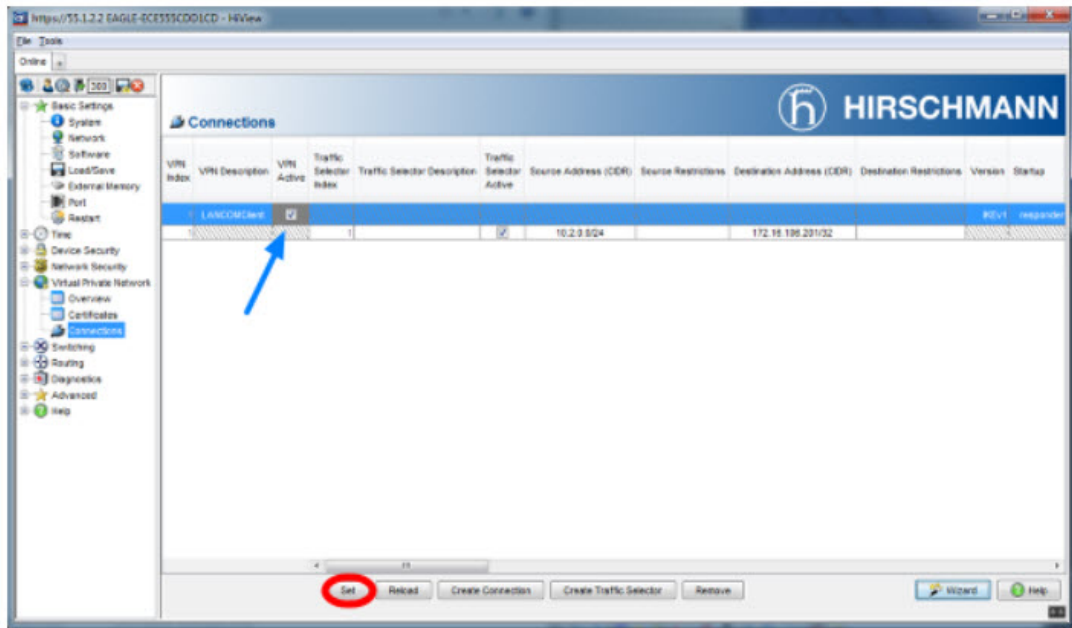
IKE Local ID: **/C=DE/ST=BW/O=Hirschmann/OU=L3-Support/CN=EAGLE20**

IKE Remote Identifier Type: **id**

IKE Remote ID: **/C=DE/ST=BW/O=Hirschmann/OU=L3-Support/CN=VPNCLIENT**

Click Finish

Activate the VPN Connection



Activate the VPN connection

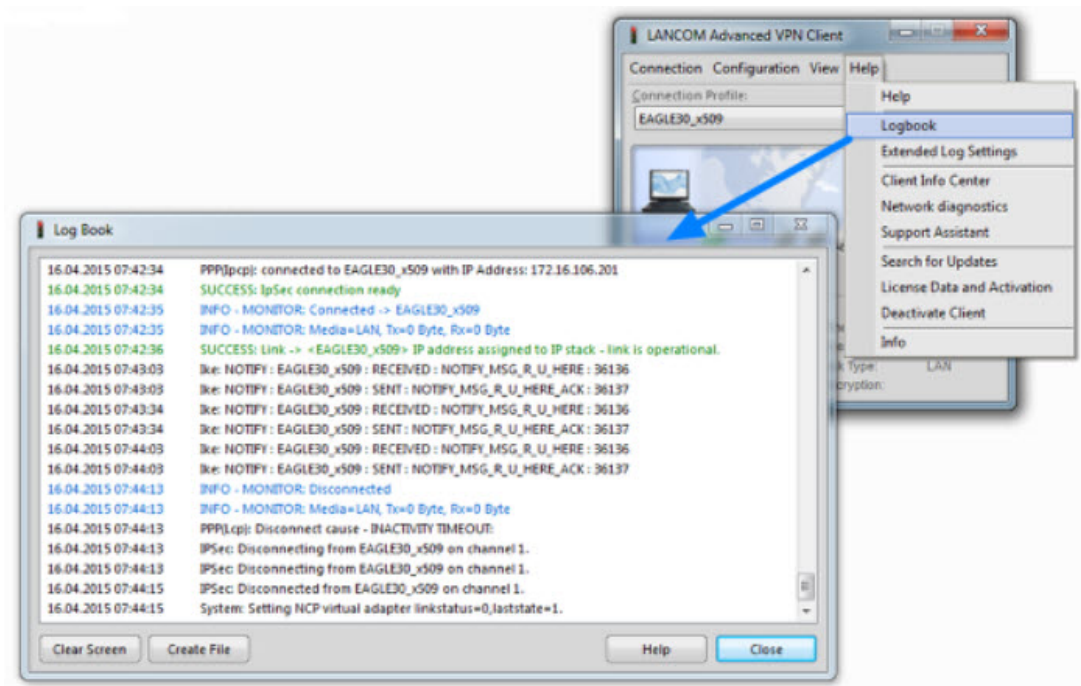
Click Set

Initialize Tunnel Setup



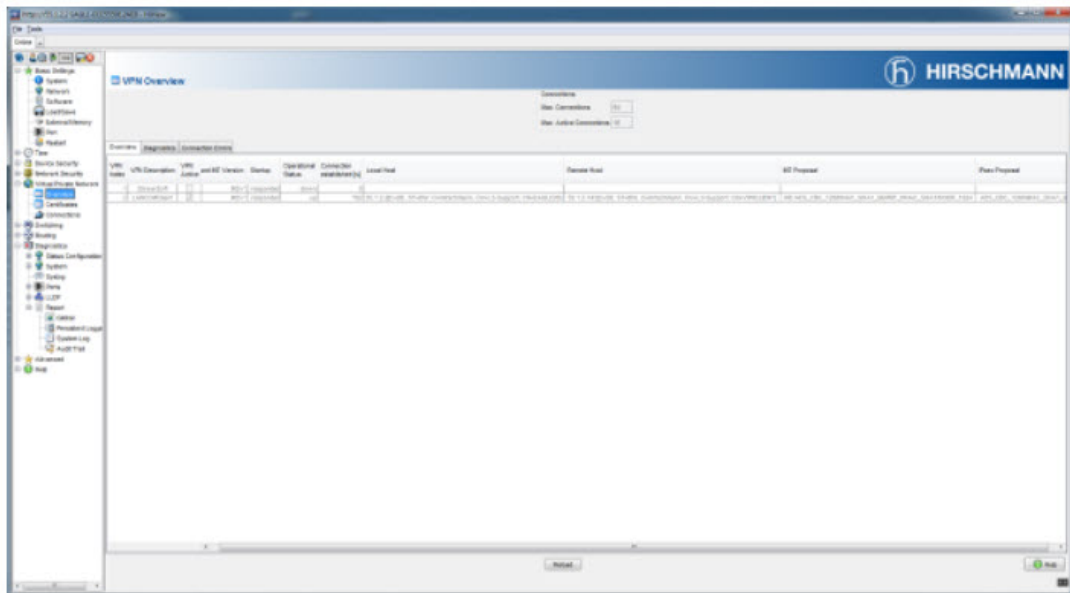
1. Move the Connection slide to the right to initialize the tunnel setup. You will get prompted to enter the certificate's pin. In our example 'test'
2. The connection should be established successfully.

LANCOM Advanced VPN Client - Log



Select Log -> Logbook

VPN Overview



In the EAGLE20/30 web interface navigate to **Virtual Private Network - Overview** to check if the VPN connection is up.

EAGLE20/30 Event Log

https://15.1.2.2/EAGLE-ECE55012AE0 - HView

Dir Tools

Order

292

System Log

HIRSCHMANN

System Log

System information

Product	EAGLE20
Release	HSE005-02.01-RC2
Hardware version	90
Serial number	83759705010101127
Firmware software release (RAM)	HSE005-02.01-RC2 2015-01-16 15:39
Appllet software release (RAM)	GUI-02.01-RC2
Firmware software release (FLASH)	HSE005-02.01-RC2 2015-01-16 15:39
Appllet software release (FLASH)	GUI-02.01-RC2
Bootcode software release (FLASH)	HSE005-01.2.00 2014-05-23 07:22
IP address (management)	0.0.0.0
MAC address (range 93)	EC E5 55 01 2A E0
System Name	EAGLE-ECE55012AE0
System Up Time	9 days 8 hrs 50 mins 15 secs
System Date and Time (local time zone)	2015-04-16 08:21:40
System operating hours	15 days 1 hrs 40 mins 42 secs
Power1	OK
Power2	DEFECTIVE
Temp	47
Configuration state (running to NVM)	OUT OF SYNC
Service shell admin status	enabled

Severity threshold for high priority buffer.....warning

```

174: Notice Apr 16 2015 08:21:12 [SMTPTRAP xmpd 0x00230014] Trap 'hm2WebLoginSuccessTrap' was sent.
(hm2WebLastLoginUserIndex=0 = admin, hm2WebLastLoginIpAddressType=0 = 1, hm2WebLastLoginIpAddress=0 = 55.1.2.143)
173: Notice Apr 16 2015 08:21:12 [USMGR usermgr 0x0002005a] Login via web interface successful for user
'admin', role 'administrator'.
172: Notice Apr 16 2015 08:17:17 [USMGR usermgr 0x0002005b] Logout via web interface successful for user
'admin', role 'administrator'.
171: Notice Apr 16 2015 08:17:17 [SMTPTRAP xmpd 0x00230014] Trap 'hm2WebLogoutTrap' was sent.
(hm2WebLastLogoutUserIndex=0 = admin)
170: Notice Apr 16 2015 08:11:56 [SMTPTRAP xmpd 0x00230014] Trap 'hm2WebLogoutTrap' was sent.
(hm2WebLastLogoutUserIndex=0 = admin)
149: Notice Apr 16 2015 08:11:54 [CLI cli 0x00120020] CLI: Logout via SSH successful for user 'admin', role
'Administrator' from 55.1.2.143 because of timeout exceed.
148: Notice Apr 16 2015 08:11:34 [SMTPTRAP xmpd 0x00230014] Trap 'hm2VpnOpTrap' was sent. (hm2VpnConnIndex = 2,
hm2VpnConnOperStatus = 1)

```

Reload Search Save Delete Log File Help