

Rogue Device Detection

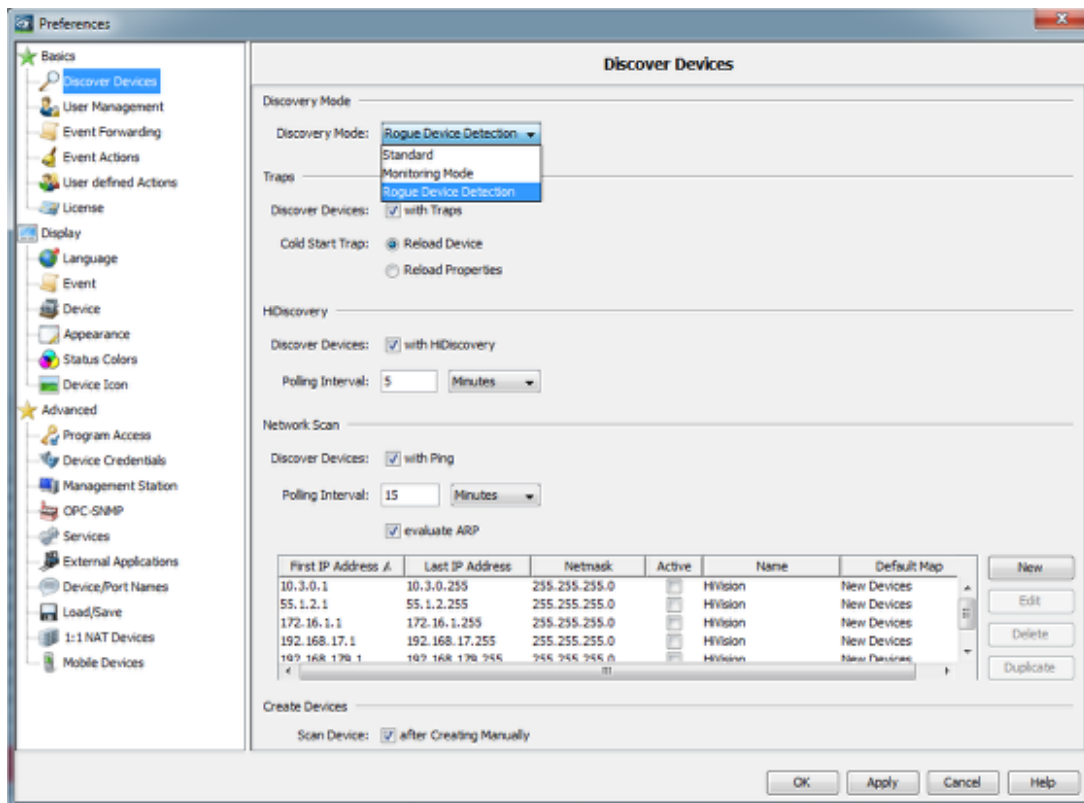
- 2018-02-21 - Industrial HiVision

Rogue Device Detection is available as of IHV v6.0 and can be selected in the preferences dialog.

This discovery mode will detect devices using the selected discovery options but place discovered devices in a separate folder named Rogue Devices.

This feature allows to find devices which do not belong to the monitored network.

Discovery Mode



In the preferences you can select from 3 different discovery modes.

Standard: IHV uses the selected options to discover devices

Monitoring Mode: no automatic scanning but Network Scan, HiDiscovery Scan or add device manually are available

Rogue Device Detection: selected options will be used (at least one option must be selected). Discovered devices will be placed in folder Rogue Devices

Rogue Devices

The screenshot shows the Hirschmann Industrial HiVision interface. On the left, a tree view shows the network structure, with 'Rogue Devices' highlighted in red. The main area displays a network map with a single device icon labeled '172.16.1.220'. Below the map, the 'Unacknowledged Events' table is visible, with a red box highlighting the following entries:

ID	Act.	Type	Category	Time	User	Source	Component	Message
535			Device Managed	2015-04-27 13:22:13	DEPSTAR@	Industrial HiVision Service		Device Added to Topology: 172.16.1.220, 00:80:63:2F:6E:08
534			Device Managed	2015-04-27 13:22:08	DEPSTAR@	Industrial HiVision Service		Compatible Class Found for Device: IP Address: 172.16.1.220, 00:80:63:2F:6E:08. Device Class: CooperRail, Mach 4000, ...
533			Device Managed	2015-04-27 13:23:07	DEPSTAR@	Industrial HiVision Service		SNMP Access Established: 172.16.1.220
532			Device Discovered	2015-04-27 13:23:07	DEPSTAR@	Industrial HiVision Service		New Rogue Device Detected by SNMP Trap: 172.16.1.220
531			Device Discovered	2015-04-27 13:23:07	DEPSTAR@	Industrial HiVision Service		New Rogue Device Detected by SNMP Trap: 172.16.1.220

Log entries for discovered rogue devices are generated