

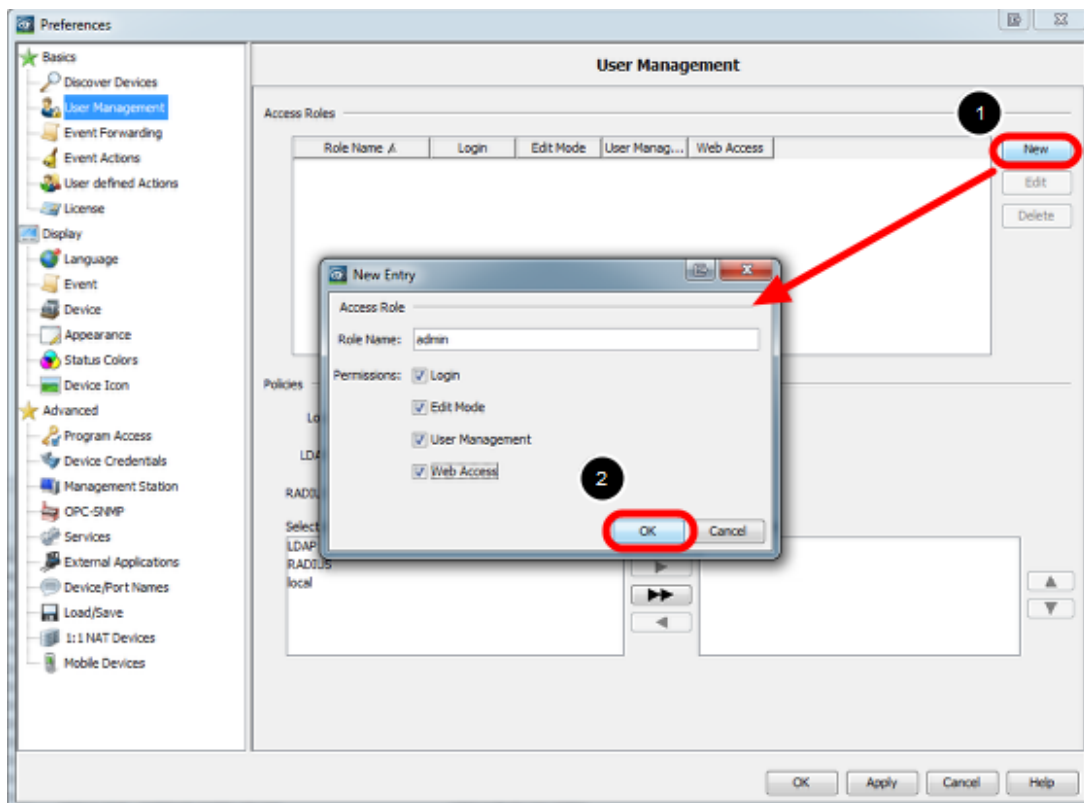
## User Management

- 2019-11-28 - Industrial HiVision

### User Management

This lesson explains how to setup the user management of Industrial HiVision as of v6.0

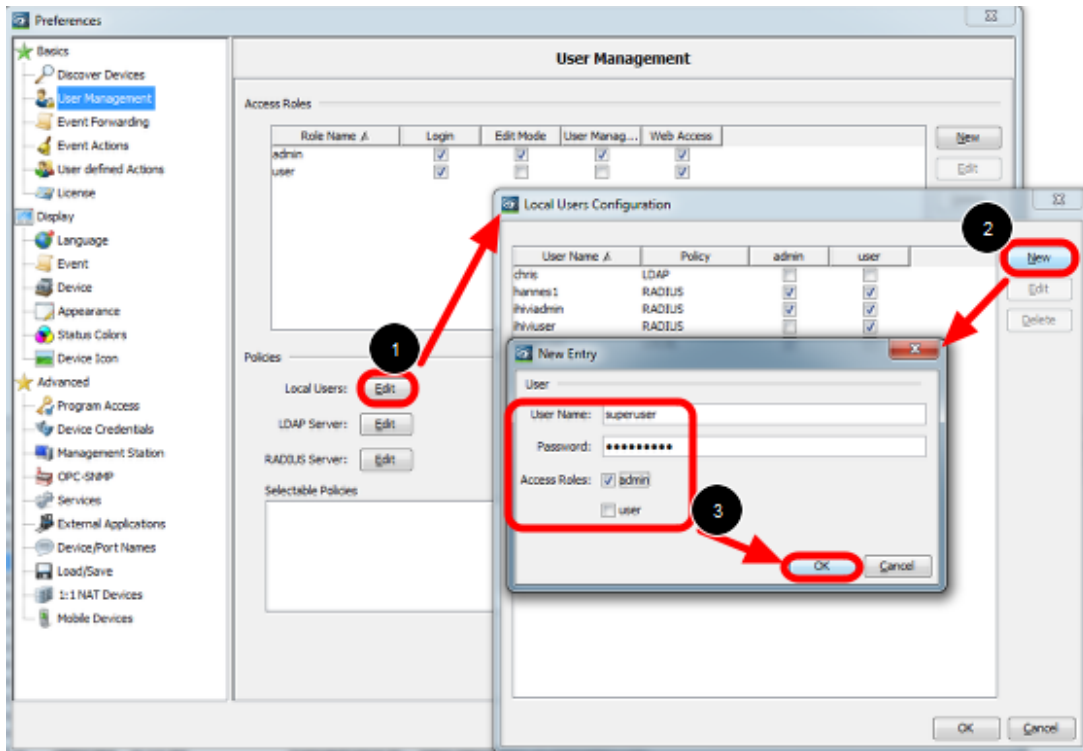
#### Access Roles



Create two access roles

- admin with permission Login, Edit Mode, User Management, Web Access
- user with permission Login, Webaccess

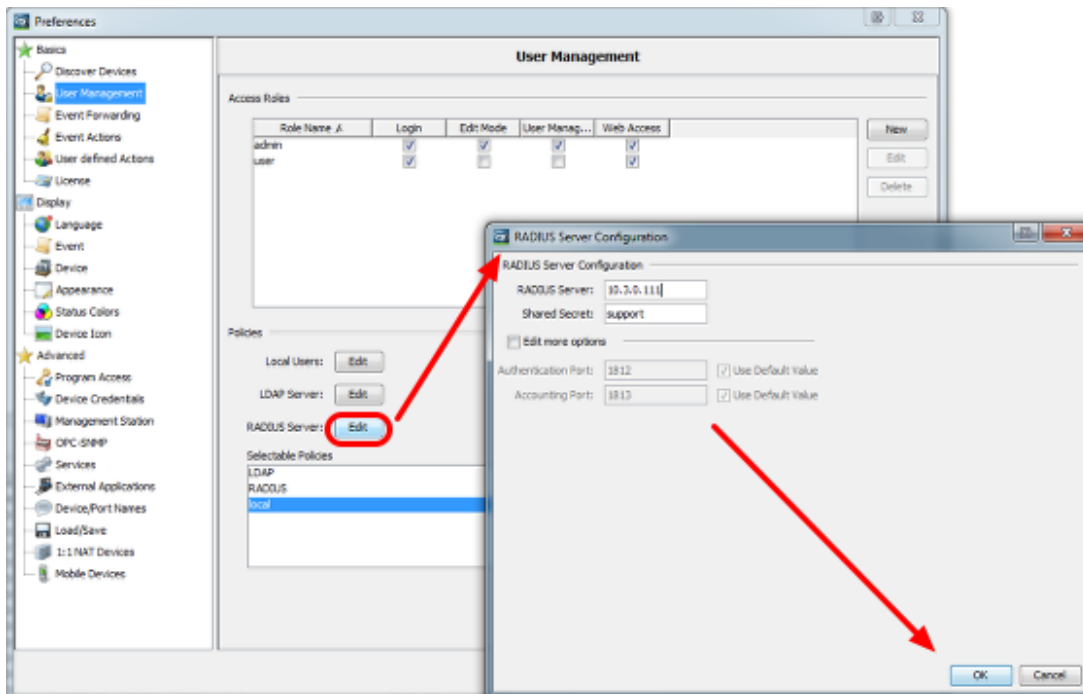
**Create local superuser**



Create a local superuser with access role **admin**. This insures access even if the authentication server is not available.

Important is to give the admin group permission to the user management.

### Radius-Server configuration



### Freeradius Configuration Example

#### Dictionary

Add the following lines to /etc/freeradius/dictionary

VENDOR Hirschmann 248  
BEGIN-VENDOR Hirschmann  
ATTRIBUTE Hirschmann-Access-Rights 1 string  
ATTRIBUTE Hirschmann-Function-Rights 12 integer  
END-VENDOR Hirschmann

### users

Add users to /etc/freeradius/users

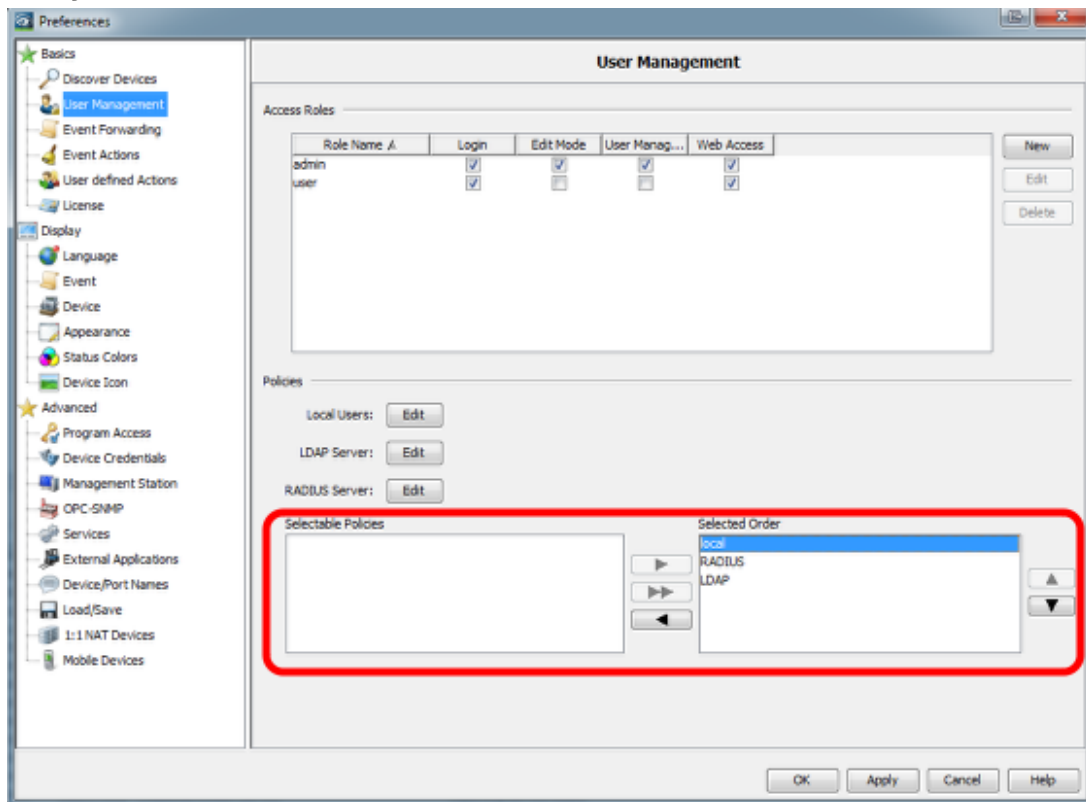
Example:

*admin Cleartext-Password := "testtest"*

*User-name == "admin",*

*Hirschmann-Access-Rights := "admin"*

### Policy order

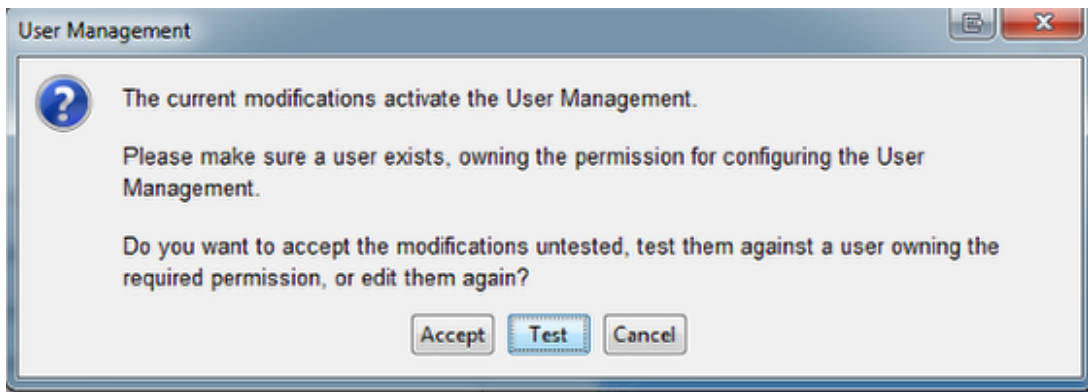


First pick your choice from the selectable policies and move them with the arrows to the Selected Order.

Change the order by highlighting one entry and move up or down using the arrow buttons.

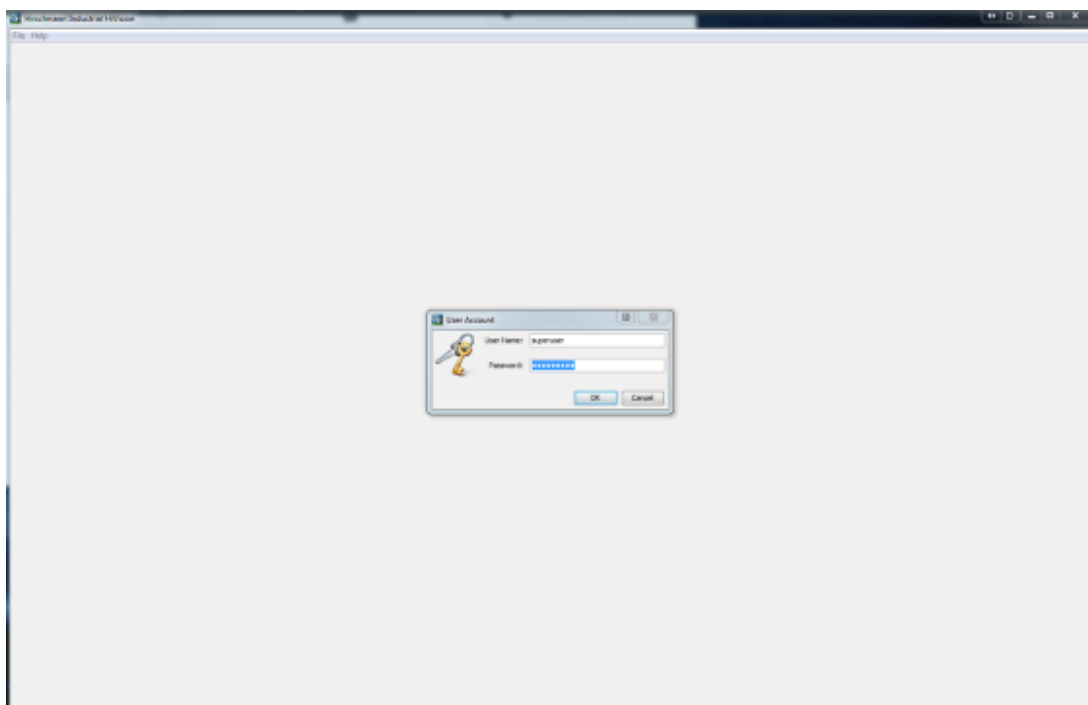
Make sure that local authentication comes first

### Test before activate



Before activating the User Management the pop-up window offers the possibility to test your current user configuration.

### Login Window



After activating the User Management you need to login each time you start IHV.