

## Firmware update using TFTP via Telnet

- 2022-01-10 - Classic Switches

This howto describes the TFTP firmware update on Hirschmann Platform devices RS20/30/40, RSR20/30, MS20/30, PowerMICE, MACH100/1000/4000 and Octopus.

### Preparation

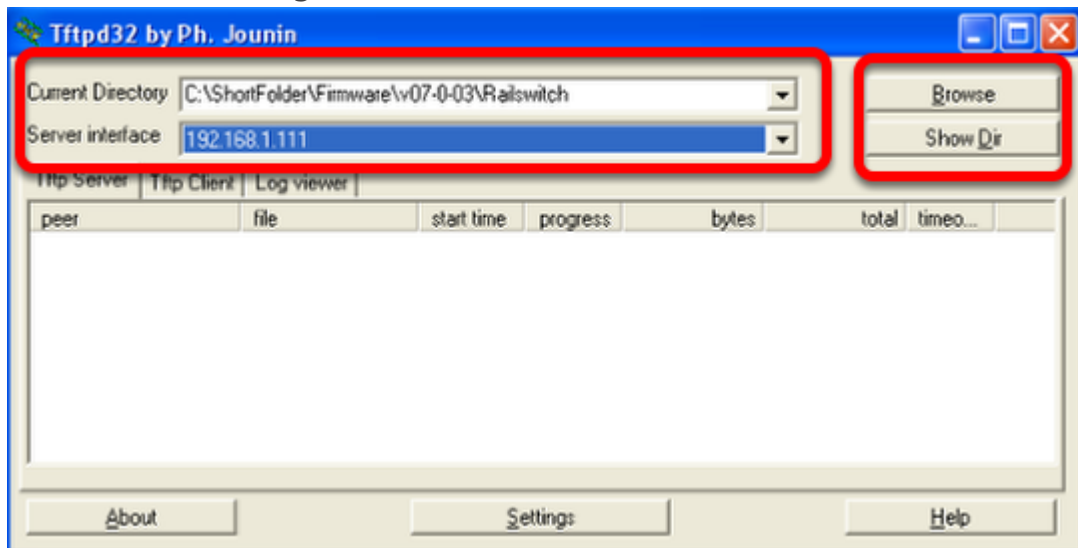
For a TFTP-Update you need a TFTP-server where the required software file is stored.

TFTP stands for Trivial File Transfer Protocol.

In this manual the freeware program "Tftpd32" - from Ph. Jounin, free download at <http://tftpd32.jounin.net/> - is used.

Start „tftpd32.exe“ program.

### TFTP-server settings



Make sure the correct network interface card is selected as "Server Interface".

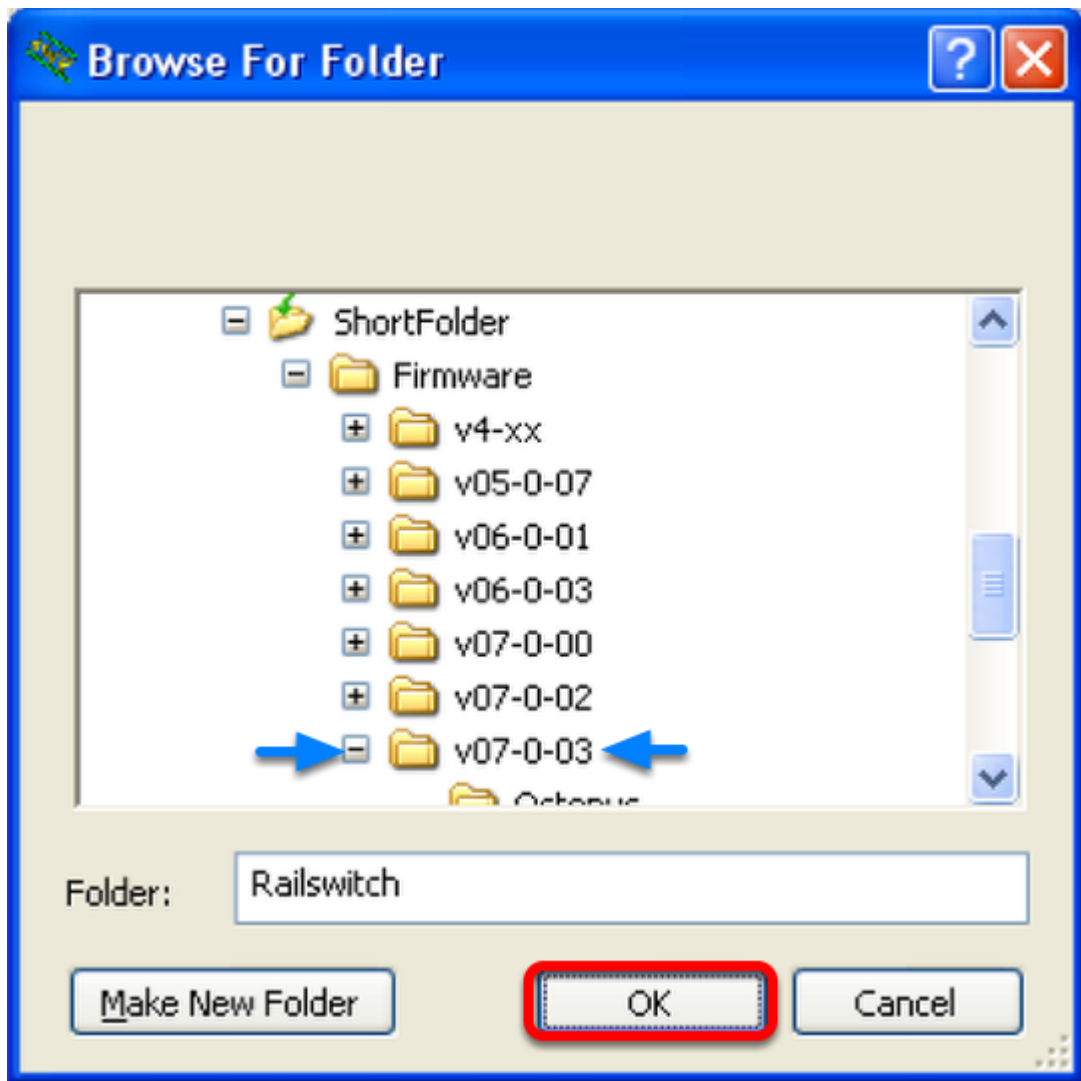
Change the "Current Directory" to the directory which contains the firmware file.

You can use the "Browse" button to select the directory.

### Browse for directory

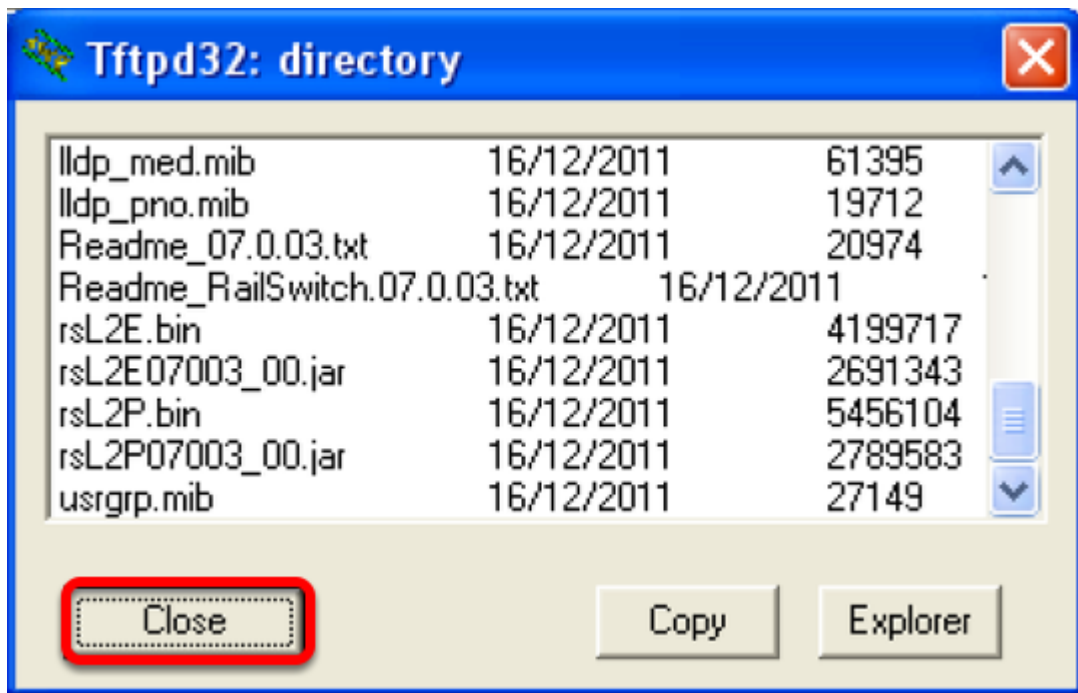






Select the directory which contains the firmware file (e.g. rsl2P.bin)  
Click "OK" to continue

### **Browse files in Current Directory**



To make sure that the desired firmware file is available click "Show Dir"

Click "Close" to return to the main window.

### Open telnet session

```
Copyright (c) 2004-2012 Hirschmann Automation and Control GmbH
All rights reserved
Railswitch Release L2E-07.1.03-B17
(Build date 2012-06-25 19:48)

System Name: RS-4BA19E
Mgmt-IP : 172.16.1.10
Base-MAC : 00:80:63:4B:A1:9E
System Time: 2012-01-01 03:30:19

User:admin
Password:*****

NOTE: Enter '?' for Command Help. Command help displays all options
that are valid for the 'normal' command forms of that particular mode.
For a list of valid 'no' command forms for that mode, enter the help
command 'no ?'. For the syntax of a particular command form, please
consult the documentation.

(Hirschmann Railswitch) >
```

1. Open telnet session
2. Login as "admin" (default password is "private")

### Start TFTP update

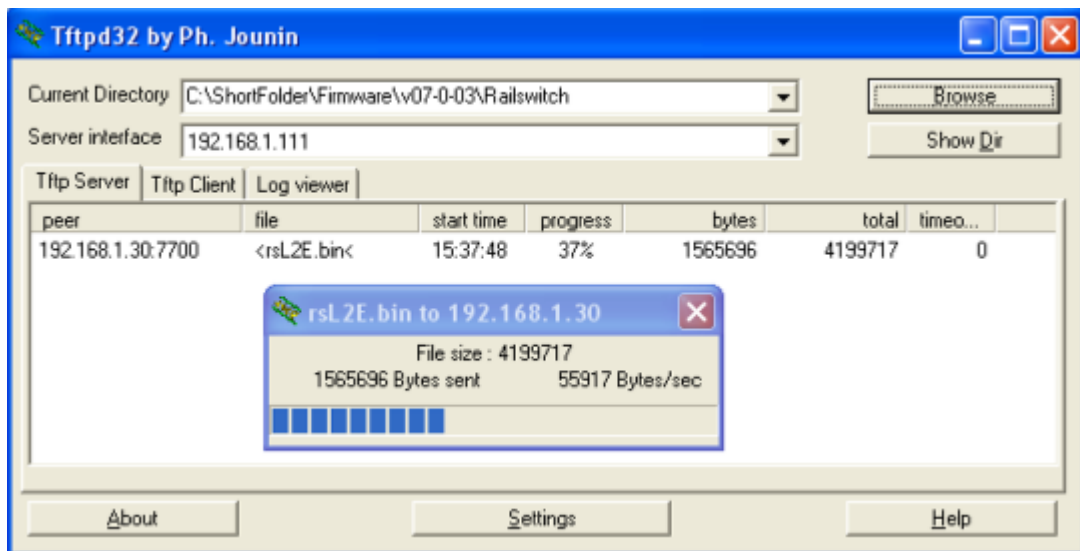
```
(Hirschmann Railswitch) >en
(Hirschmann Railswitch) #copy tftp://172.16.1.143/rsL2E.bin system:image
Mode..... TFTP
Set TFTP Server IP..... 172.16.1.143
TFTP Path..... /
TFTP Filename..... rsL2E.bin
Data Type..... Code
Management access will be blocked for the duration of the transfer.
Are you sure you want to start? (y/n) y

Note: A software or config update has been started. The Command Line
Interface will be blocked until the file transfer completes.

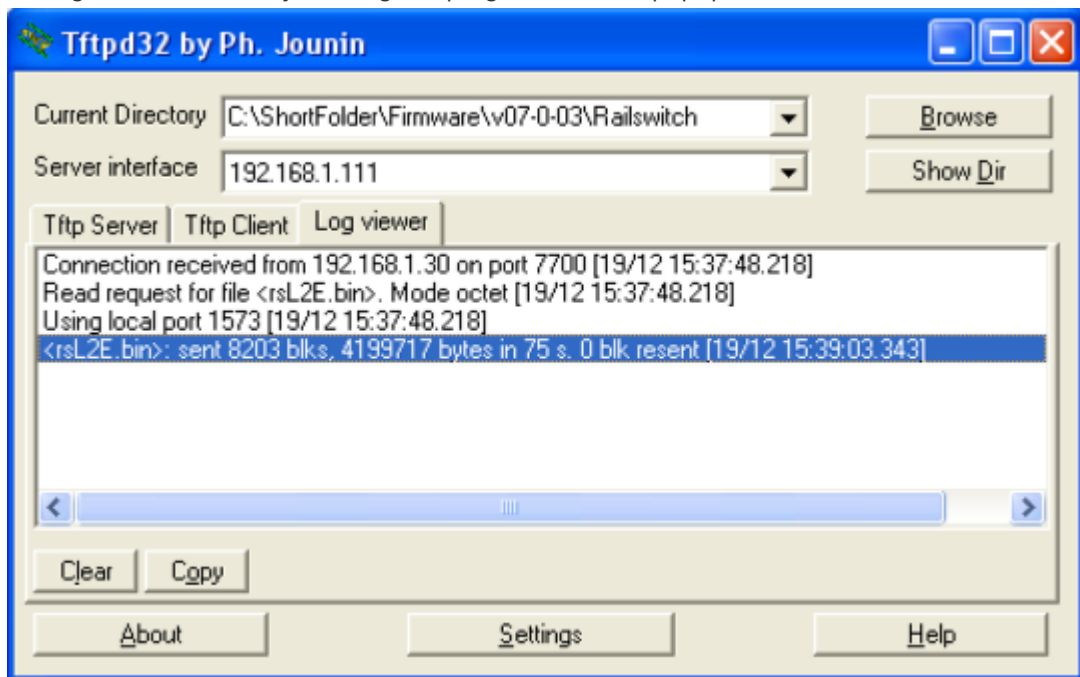
TFTP code transfer starting
```

1. Change into privileged mode using the command "enable" - the prompt will change from ">" to "#"
2. Use the copy command to start the tftp file transfer. The syntax is "**copy tftp://<ip address of tftp server>/<file name>.bin system:image**" (e.g. "copy tftp://172.16.1.143/rsL2E.bin system:image")
3. Confirm the blocked management access during the update with "y"

### Observe the file transfer



During the file transfer you will get a progress window popup in the TFTPd32.



Both tabs "TFTP Server" and "Log Viewer" shows which files have been served.

After the file transfer is finished the switch will write the firmware file into the flash.

Once this is finished the message "**File transfer operation completed successfully**" will be shown in the telnet window.

**Reboot** the switch to activate the new firmware.

The telnet session will be closed. You can reconnect and check the firmware version after the switch has completed rebooting.