

## Firmware update using TFTP via the web interface

- 2022-01-10 - Classic Switches

This howto describes the TFTP firmware update on Hirschmann Platform devices RS20/30/40, RSR20/30, MS20/30, PowerMICE, MACH100/1000/4000 and Octopus.

### **Preparation**

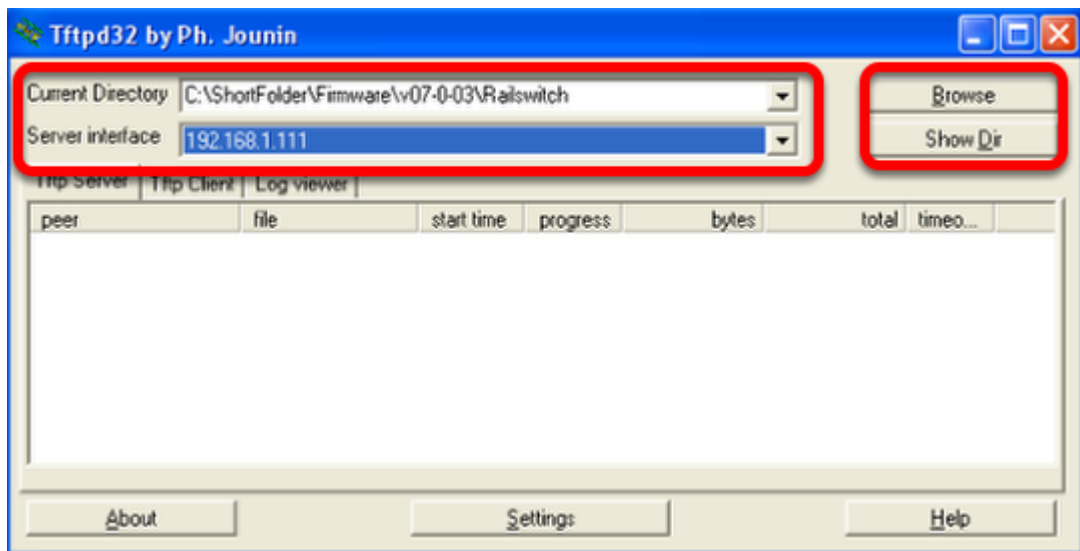
For a TFTP-Update you need a TFTP-server where the required software file is stored.

TFTP stands for Trivial File Transfer Protocol.

In this manual the freeware program "Tftpd32"- from Ph. Jounin, free download at <http://tftpd32.jounin.net/> - is used.

Start „tftpd32.exe“ program.

### **TFTP-server settings**



Make sure the correct network interface card is selected as "Server Interface".  
Change the "Current Directory" to the directory which contains the firmware file.  
You can use the "Browse" button to select the directory.

### **Browse for directory**

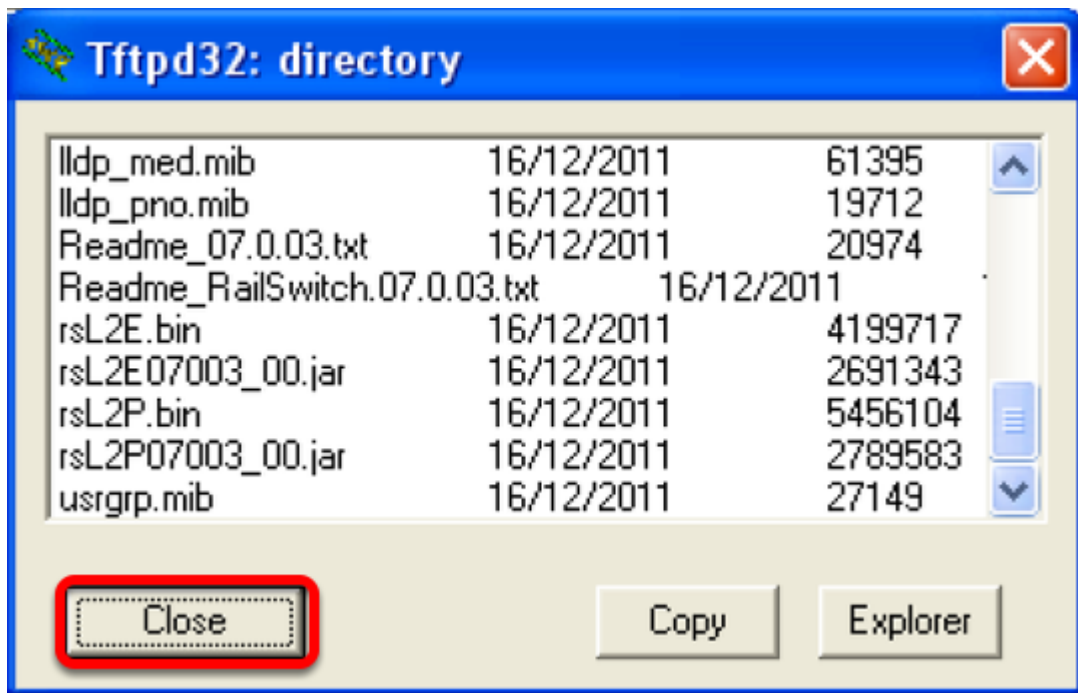




Select the directory which contains the firmware file (e.g. rsl2P.bin)

Click "OK" to continue

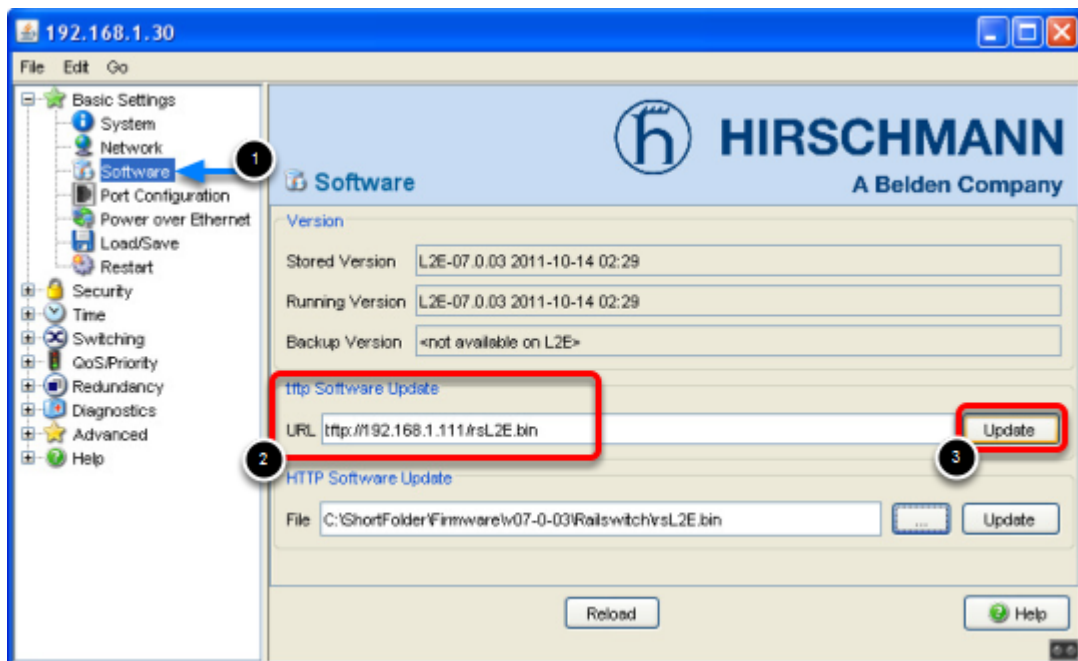
### **Browse files in Current Directory**



To make sure that the desired firmware file is available click "Show Dir"

Click "Close" to return to the main window.

### **Start TFTP-update from webinterface**



Login to the webinterface of the switch which you like to update.

1. Go to **"Basic Settings" - "Software"**

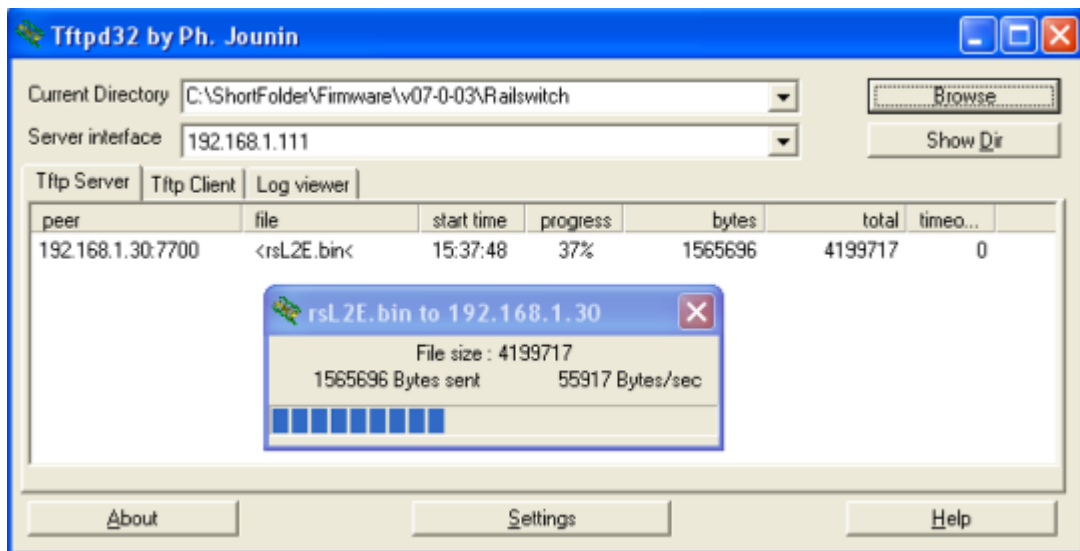
2. Specify the **URL** in the **"tftp Software Update"** section.

The syntax is `tftp:// {IP-address of the TFTP server} / {firmware file name}`

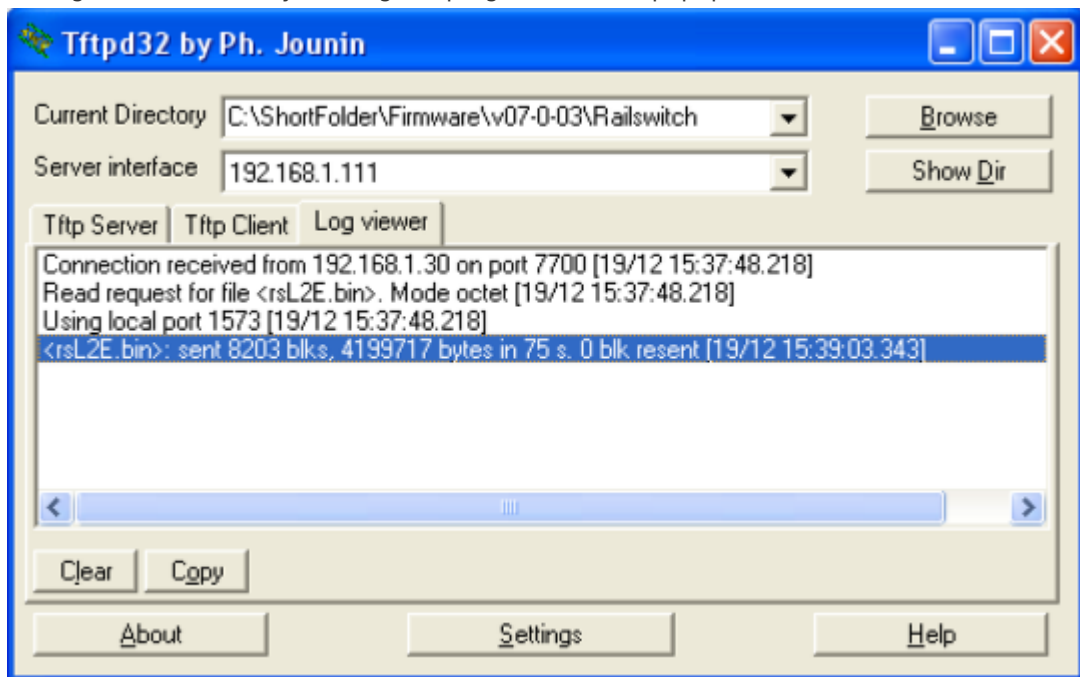
In this example the correct entry is `tftp://192.168.1.111/rsL2E.bin`

3. Start the file transfer by clicking the **"Update"** button

**Observe the file transfer**



During the file transfer you will get a progress window popup in the TFTPd32.



Both tabs "TFTP Server" and "Log Viewer" shows which files have been served.

After the file transfer is finished the switch will write the firmware file into the flash.

Once this is finished the webinterface will indicate the upload was successful.