

## How to configure an Open BAT as an 802.1x authenticator

- 2022-01-10 - BAT, WLC (HiLCOS)

This lesson describes how to configure an Open BAT as 802.1x authenticator.

You may need to refer to the following lessons for a complete working 802.1x environment (Supplicant - Authenticator - Server):

- How to configure an Open BAT as 802.1x supplicant
- How to use an Open BAT or a Controller as RADIUS Server and set up User accounts

These How to are complementary and use the following settings for the radius authentication:

EAP - PEAP with MSCHAPv2 as tunnel method.

### **Representation**



### Preliminary steps

Give the BAT an IP address (in our example: 192.168.1.140)

You can refer to the lesson ""How to give an Open BAT or a WLC an IP address""

Add the BAT in LANconfig

You can refer to the lesson ""How to discover a BAT or a WLC in LANconfig""

Configure the BAT as an Access Point

You can refer to the lesson ""How to configure an Open BAT as Access Point"" but only configure WLAN-1 and refer to this lesson for the security settings.

**Enter the RADIUS Server address and shared secret**





Configuration > Wireless LAN > 802.1X > RADIUS servers > Add

Give an name to identify the server (this name is only used locally on the Authenticator)

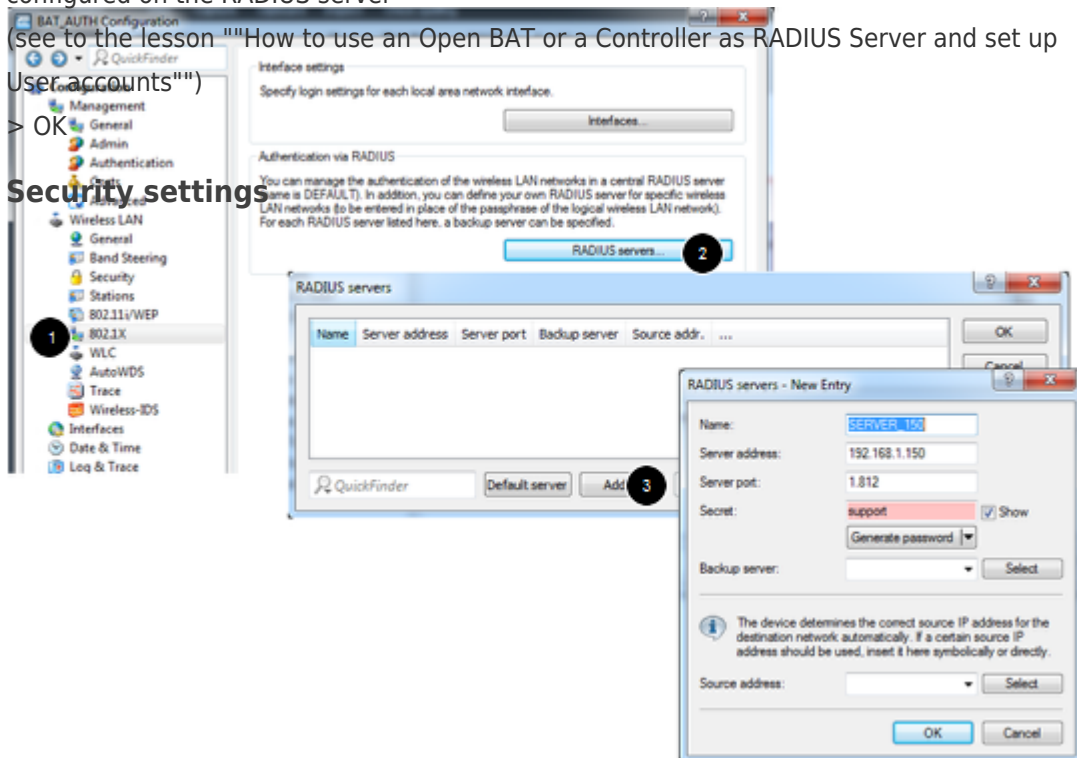
Indicate the IP address of the server (in our example: 192.168.1.150)

Indicate the server port and the shared secret. They will have to match with the ones configured on the RADIUS server

(see to the lesson "How to use an Open BAT or a Controller as RADIUS Server and set up User accounts")

> OK

Security settings





Configuration > Wireless LAN > 802.11i/WEP > WPA or Private WEP settings  
Select the relevant network (in our case Wireless LAN 1 - Network 1) and Edit  
In the new dialog make sure that the encryption is activated.

Select as Method: 802.11i (WPA)-802.1x

In the passphrase field, enter the name of the RADIUS server (the one configured in the precedent step)

> OK

This Access Point is now ready to be used as authenticator or NAS (Network Access Server)

#### 関連コンテンツ

- [How to use an Open BAT or WLC as a RADIUS server and set up user accounts](#)

