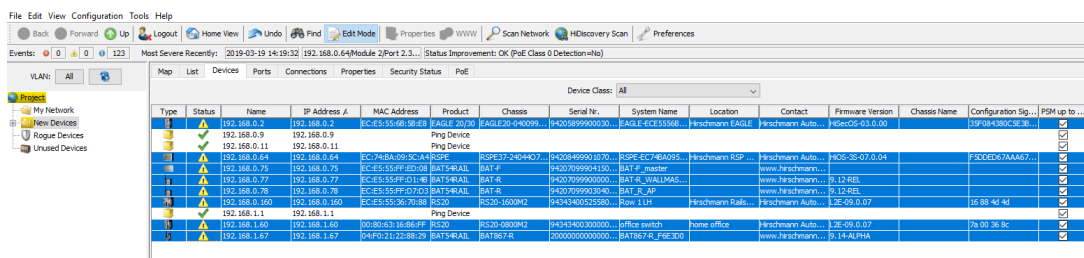


Industrial Hivision Scheduler - Save Device Configurations

John M - 2019-12-23 - Industrial HiVision

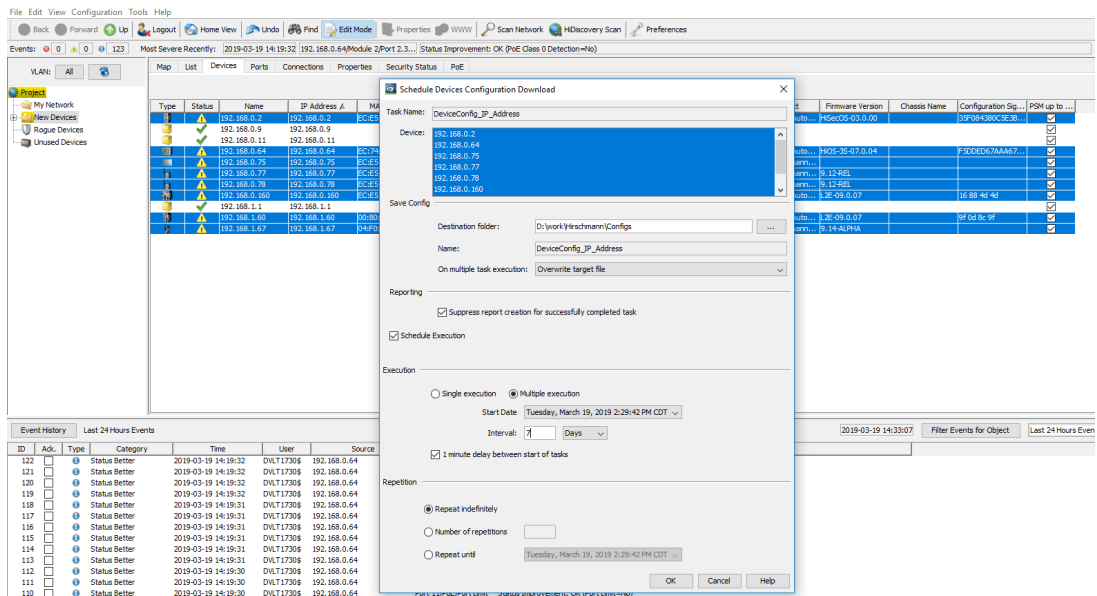
This guide is designed to walk through the steps to configure Hirschmann Industrial HiVision to enable the scheduled remote backup of Configurations of the Hirschmann devices in a project.

1. Once Hivision is running go to the Device tab and highlight the devices that need the configurations saved, right click on one of the highlighted devices and select Save Device Configuration.

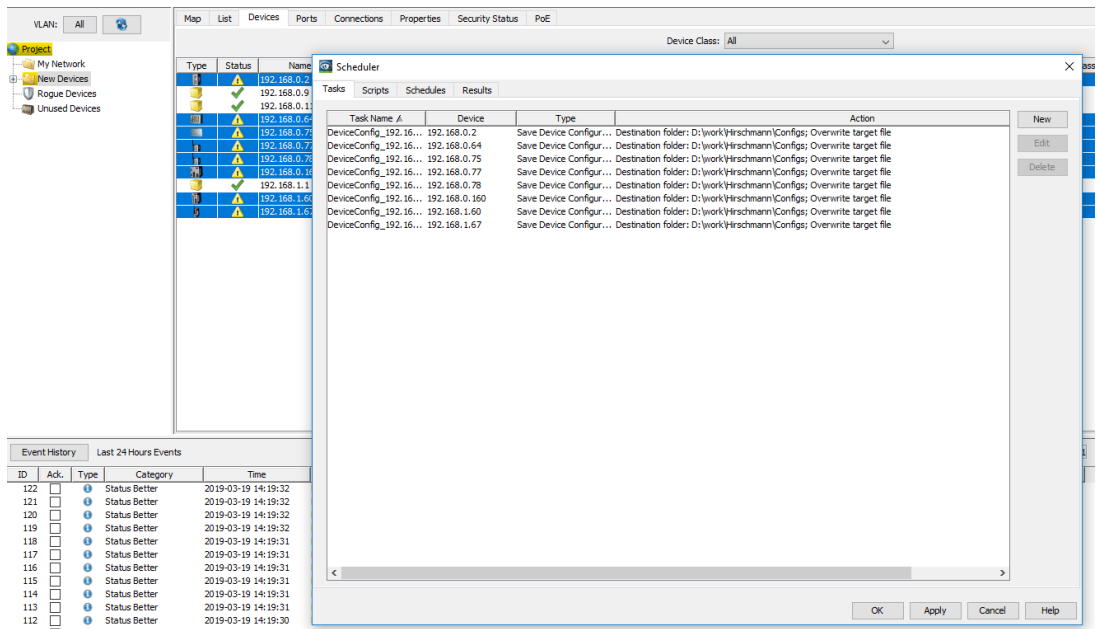


Type	Status	Name	IP Address /#	MAC Address	Product	Chassis	Serial No.	System Name	Location	Contact	Firmware Version	Chassis Name	Configuration Sig.	POE up to
	✓	192.168.0.2	192.168.0.2	EC-E555-66-98-69	EAGLE 2070	EAGLE20-040099...	04050899900030...	EAGLE-EC-E55568...	Hirschmann EAGLE	Hirschmann Auto...	H5ac09-03.0.00		39f064590c3e36...	
	✓	192.168.0.9	192.168.0.9		Ping Device									
	✓	192.168.0.11	192.168.0.11		Ping Device									
	⚠	192.168.0.13	192.168.0.13	EC-748A-26-5C-A4-95C	RSPE37-240407		04203499901070...	RSPE-EC-748A05...	Hirschmann RSP	Hirschmann Auto...	H02-35-07.0.04		F00ED67AA667...	
	⚠	192.168.0.75	192.168.0.75	EC-E555FF-ED-08	BAT54R4L		04207099904150...	BAT-#_master	www.hirschmann...					
	⚠	192.168.0.77	192.168.0.77	EC-E555FF-DL-06	BAT54R4L		04207099900000...	BAT-#_WALLM5...	www.hirschmann...					
	⚠	192.168.0.78	192.168.0.78	EC-E555FF-D0-03	BAT54R4L		04207099903940...	BAT-#_J...	www.hirschmann...					
	⚠	192.168.0.150	192.168.0.150	EC-E555-36-70-88	R520	R520-1600M2	04343400525580...	Row 11H	Hirschmann Rals...	Hirschmann Auto...	1.2E-09.0.07		16 80 4d 4d	
	✓	192.168.1.1	192.168.1.1		Ping Device									
	⚠	192.168.1.60	192.168.1.60	00-80-85-38-88-FF	R520	R520-0800M2	04343400300000...	office switch	home office	Hirschmann Auto...	1.2E-09.0.07		76 02 36 8c	
	⚠	192.168.1.67	192.168.1.67	04FD31-22-88-29	BAT54R4L	BAT867A	00000000000000...	BAT867A_168100	www.hirschmann...				0, 11, 1A, 1HA	

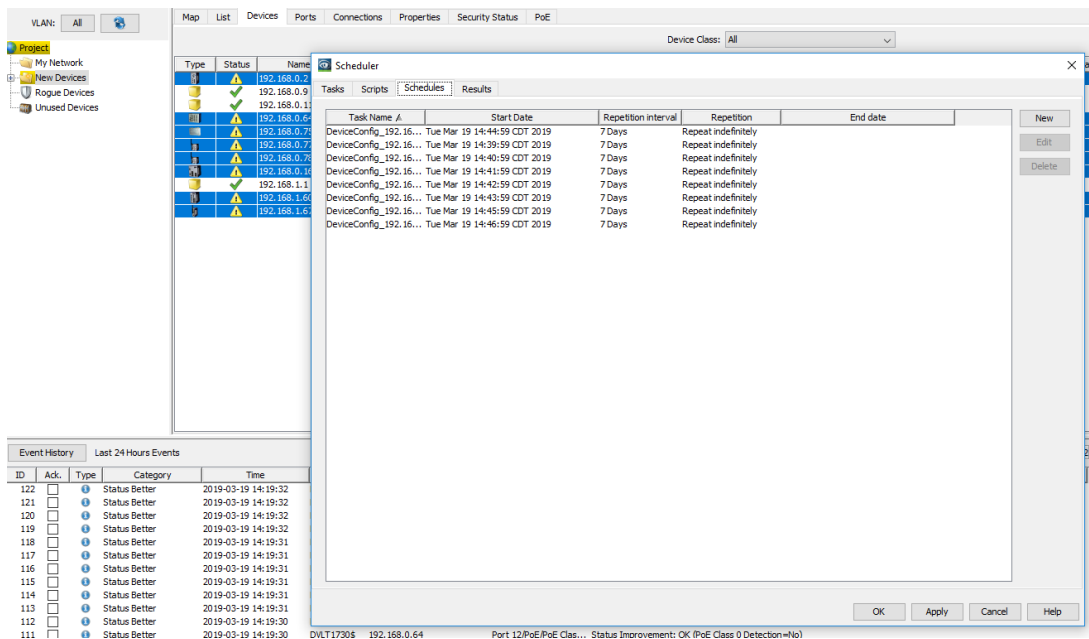
2. Browse to the location the configurations need to be saved to, set the start time (making sure to leave enough time to finish the schedule before it starts), and frequency the configurations need to be saved. Then make sure all of the other settings are selected properly and click OK.



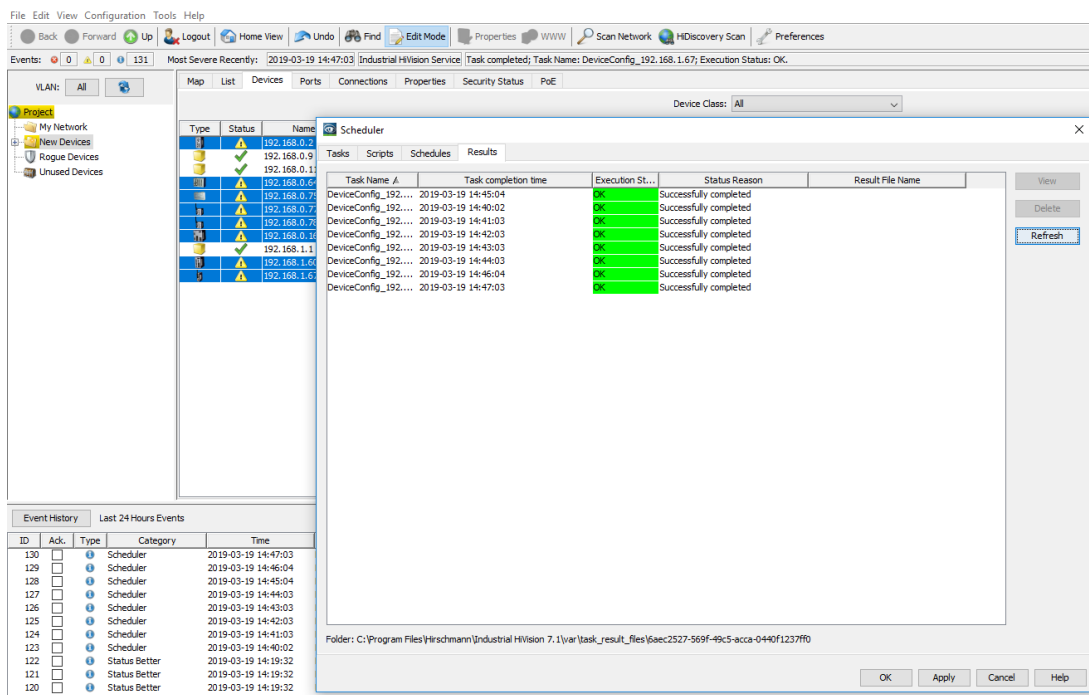
3. To verify it has been scheduled click on Configuration in the taskbar and select Scheduler, the task tab will show the devices and the task to be performed



4. The schedules tab will show the schedule to perform the tasks.



5. To verify the tasks have been completed click on the results tab.



6. Finally verify the configurations have been saved to the correct location.

