

## Firmware Update via SFTP

- 2018-02-22 - Classic Firewalls

This how describes the firmware update on EAGLE20 via SFTP

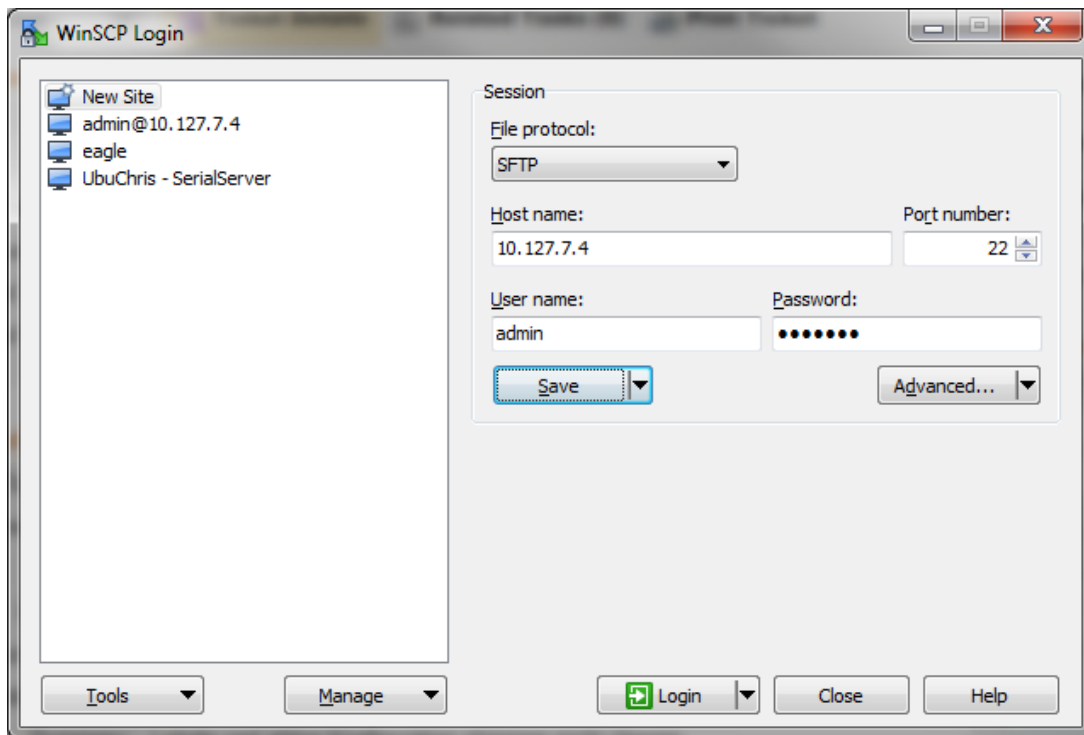
### Prerequisites

-ssh access enabled on EAGLE

Tools needed:

-WinSCP -can be downloaded from <http://winscp.net>

### **WinSCP Login**



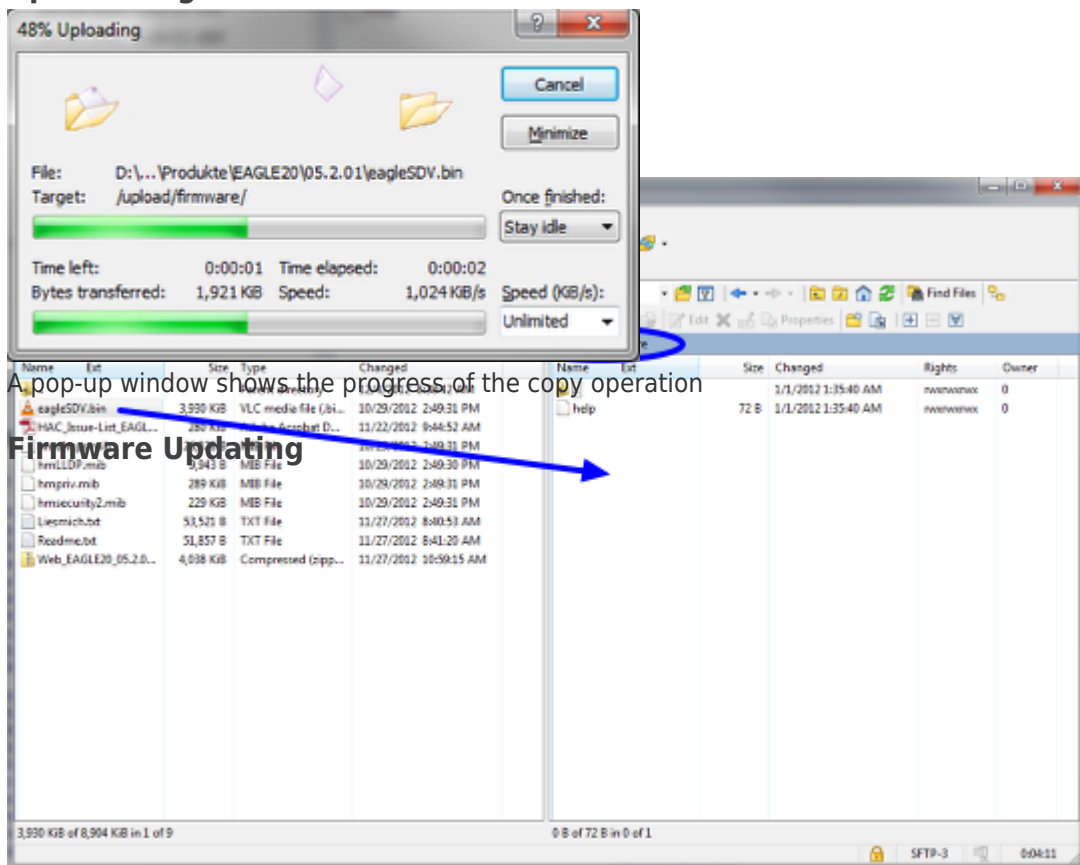
Start WinSCP and connect to the EAGLE20 with the following session details:

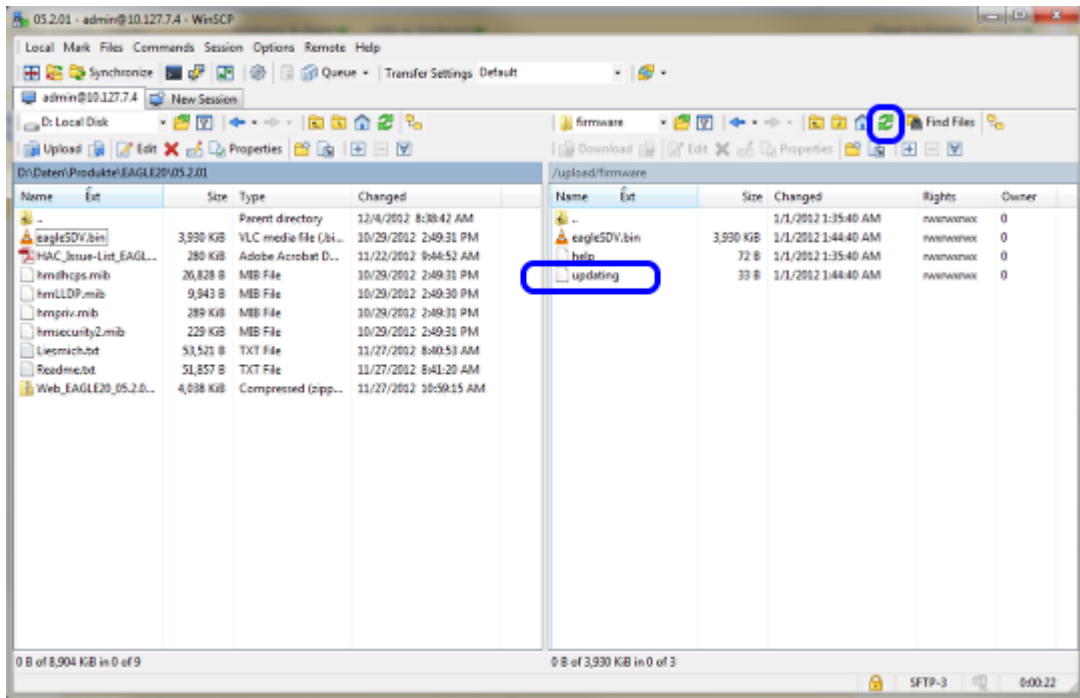
1. select file protocol **SFTP**
2. enter the IP address or host name of the EAGLE20
3. login with admin and password. If you leave it blank you will be prompted if you press Login.
4. establish the session by pressing '**Login**'

### **Drag & Drop the firmware file**

Navigate to **/upload/firmware** in the right window (remote site)  
Drag & drop the firmware file **eagleSDV.bin** in the right window

### Upload Progress

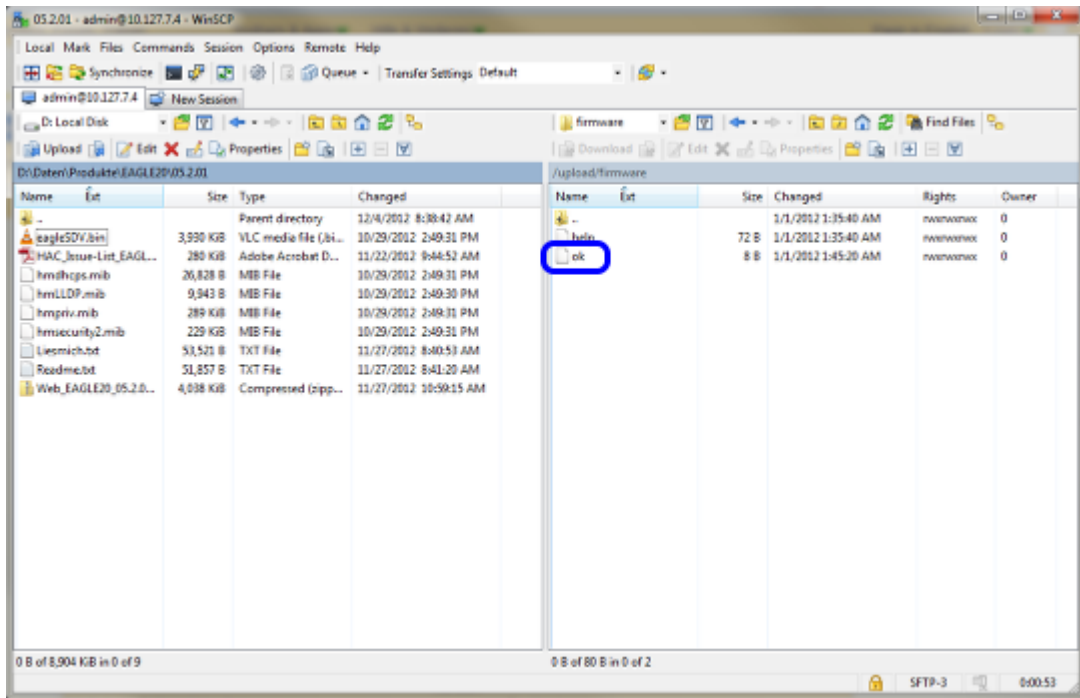




Once the file is uploaded completely the EAGLE starts updating the firmware.

If you refresh the directory listing you can see the file 'updating' as long as the update process is in progress.

## Update completed



The file 'ok' in the directory listing indicates that the update has completed successfully. The process takes approx. 30s to complete.

If the update fails you will see the file 'error' instead. You can see the complete error message if you open the file in a text editor.

## Reboot

Reboot the EAGLE20 to activate the new firmware