

First login (Password change) with LANconfig connecting the BAT device to a personal computer (2020-02-13)

Christoph Strauss - 2020-02-14 - BAT, WLC (HiLCOS)

Introduction:

This HowTo applies to BAT devices with the following software release and later: HiLCOS 10.12-RU2

To help prevent undesired access to the device, it is imperative that you change the default password during initial setup.

Prerequisites:

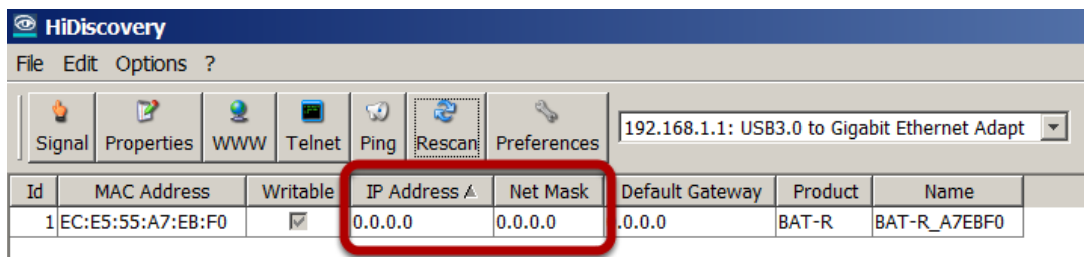
- RJ45 Ethernet cable is available (not included in the scope of delivery)
- Personal computer is on
- HiDiscovery software is installed
- LANconfig software is installed
- Device is on

Step 1: Connect the device to your personal computer using the RJ45 Ethernet cable.

Step 2: Open (double-click) HiDiscovery.



Result: HiDiscovery detects the new device without IP configuration as shown in the screenshot below.



The screenshot shows the HiDiscovery software interface. The title bar reads "HiDiscovery". Below the title bar is a menu bar with "File", "Edit", and "Options ?". A toolbar contains icons for "Signal", "Properties", "WWW", "Telnet", "Ping", "Rescan", and "Preferences". A dropdown menu is open, showing "192.168.1.1: USB3.0 to Gigabit Ethernet Adapt". Below the toolbar is a table with the following data:

Id	MAC Address	Writable	IP Address ^	Net Mask	Default Gateway	Product	Name
1	EC:E5:55:A7:EB:F0	<input checked="" type="checkbox"/>	0.0.0.0	0.0.0.0	.0.0.0	BAT-R	BAT-R_A7EBF0

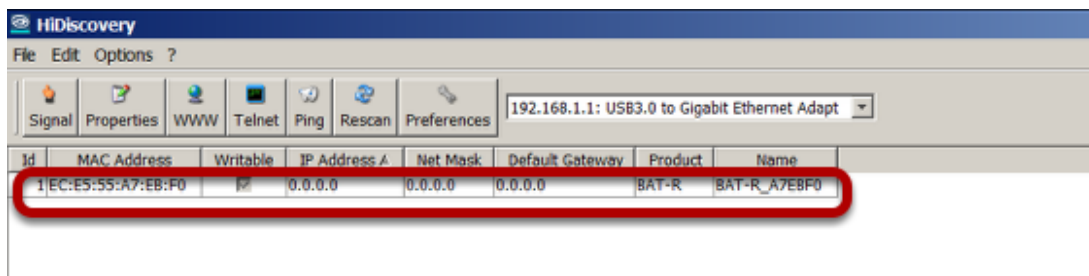
Troubleshooting if HiDiscovery does NOT detect the device:

There might be a conflict between HiDiscovery and your Antivirus program. Proceed as follows:

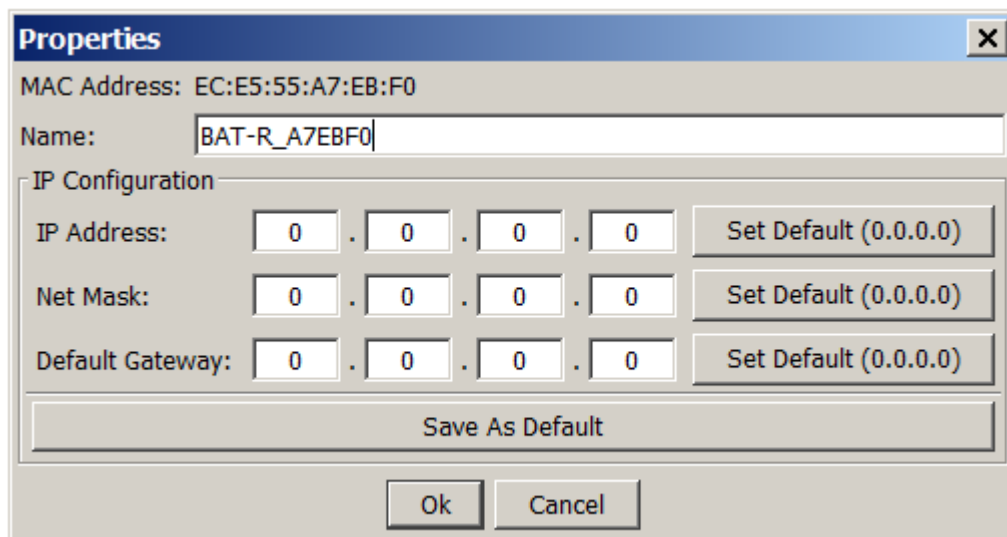
1. Contact your system administrator to check if the Antivirus program can be disabled temporarily or if an exception for HiDiscovery can be configured.
2. Then click "Rescan".

HiDiscovery detects the new device without IP configuration as shown in the screenshot above.

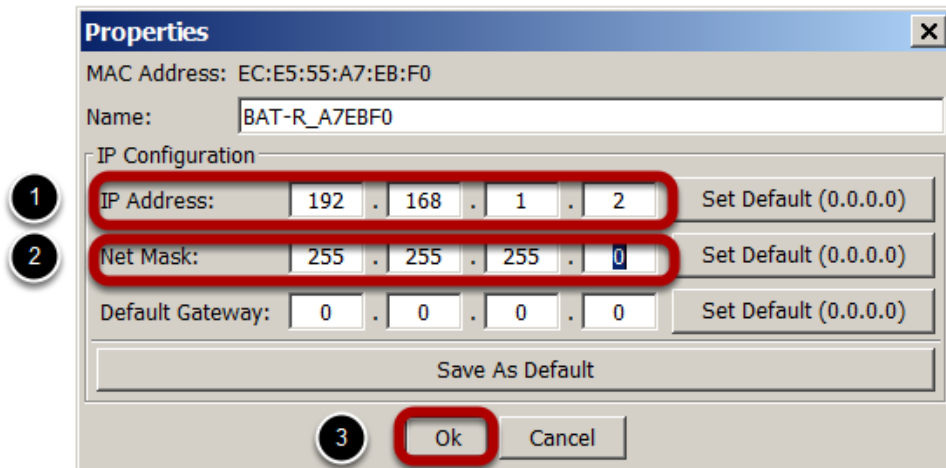
Step 3: Double-click the device that you want to configure.



Result: HiDiscovery opens the "Properties" dialog.

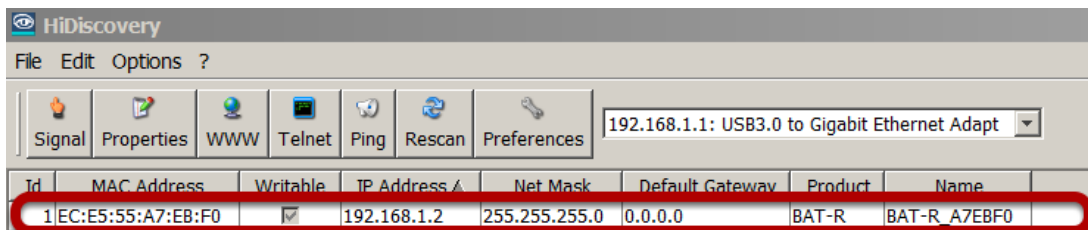


Step 4: IP Configuration



1. Configure the IP Address according to your preference.
2. Configure the Net Mask according to your preference.
3. Click "OK".

Result: After 5-10 seconds HiDiscovery shows the IP Address and the Net Mask that you have configured (see screenshot below).



Troubleshooting if the IP Configuration takes longer than 10 seconds after you have clicked "OK" and the configured IP Address and the Net Mask are still NOT shown:

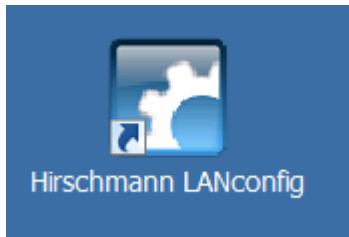
There might be a conflict between HiDiscovery and your Antivirus program. Proceed as follows:

1. Cancel the action.
2. Contact your system administrator to check if the Antivirus program can be disabled temporarily or if an exception for HiDiscovery can be configured.

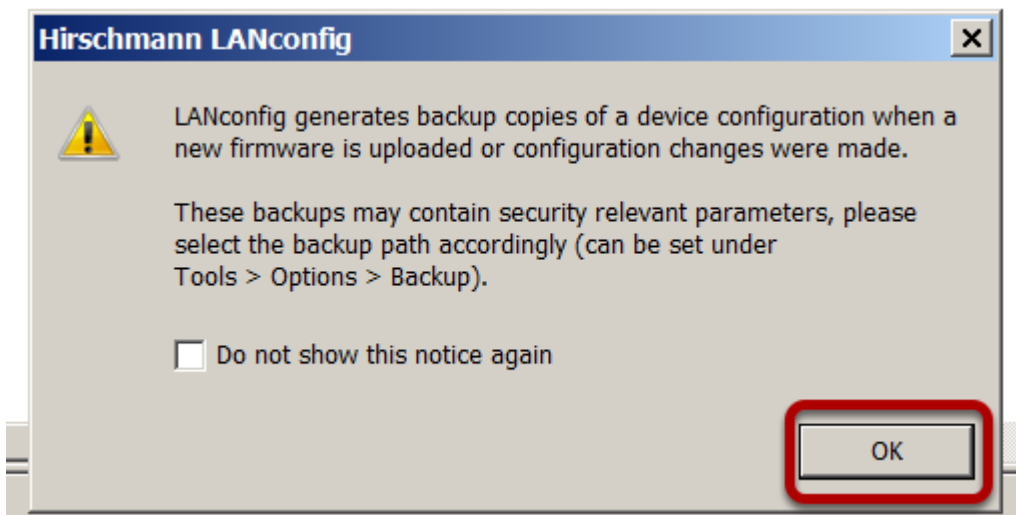
3. Click "Rescan".

HiDiscovery shows the IP Address and the Net Mask you have configured (see screenshot above).

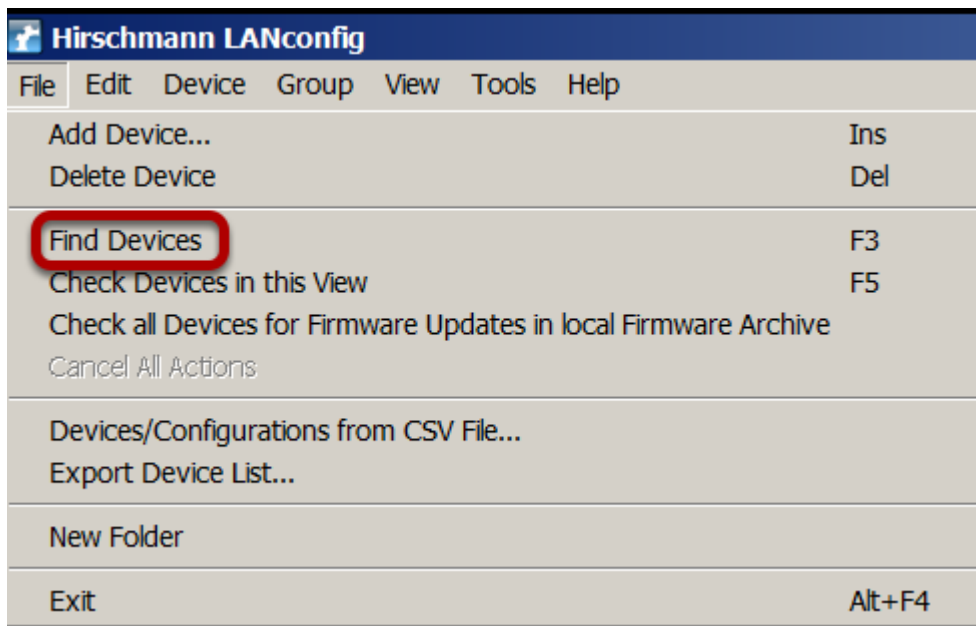
Step 5: Open (double-click) LANconfig.



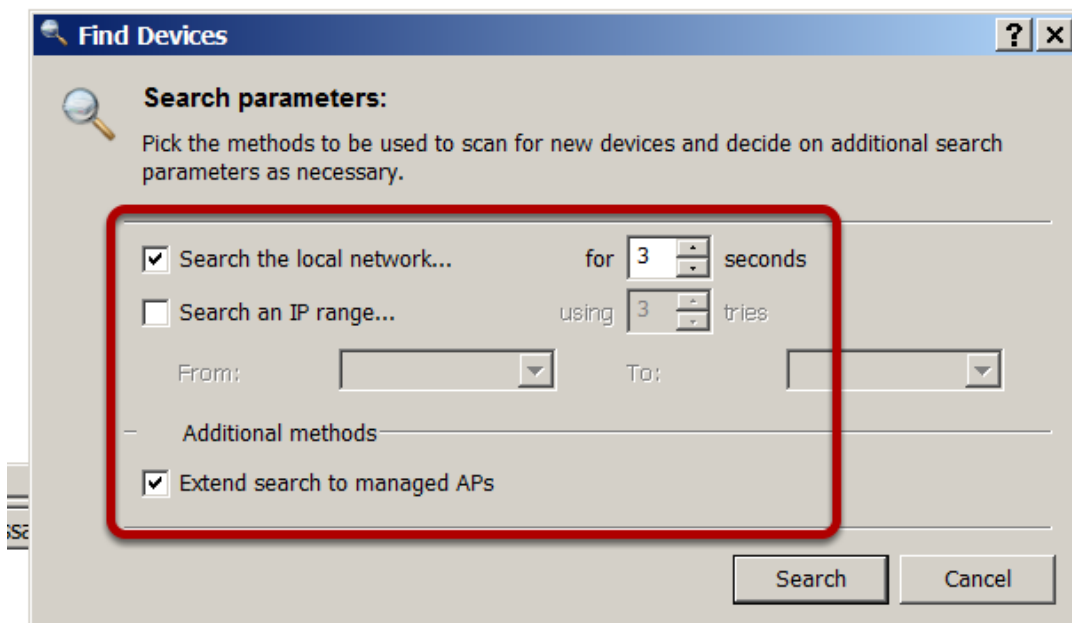
Step 6: Click "OK".



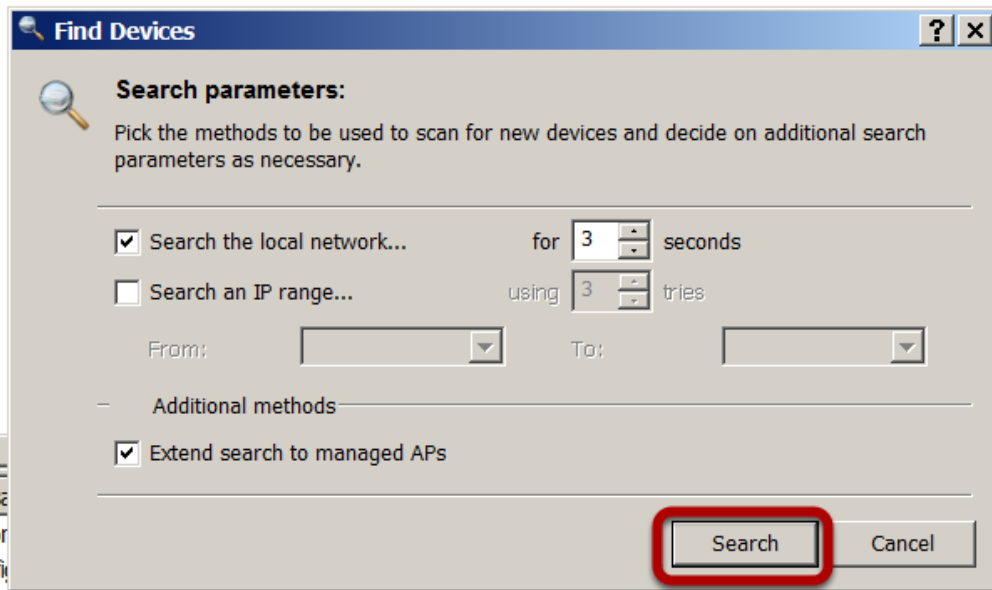
Step 7: Click "File" > "Find Devices".



Step 8: Use the default parameters (as shown in the screenshot below) or define your own search parameters.

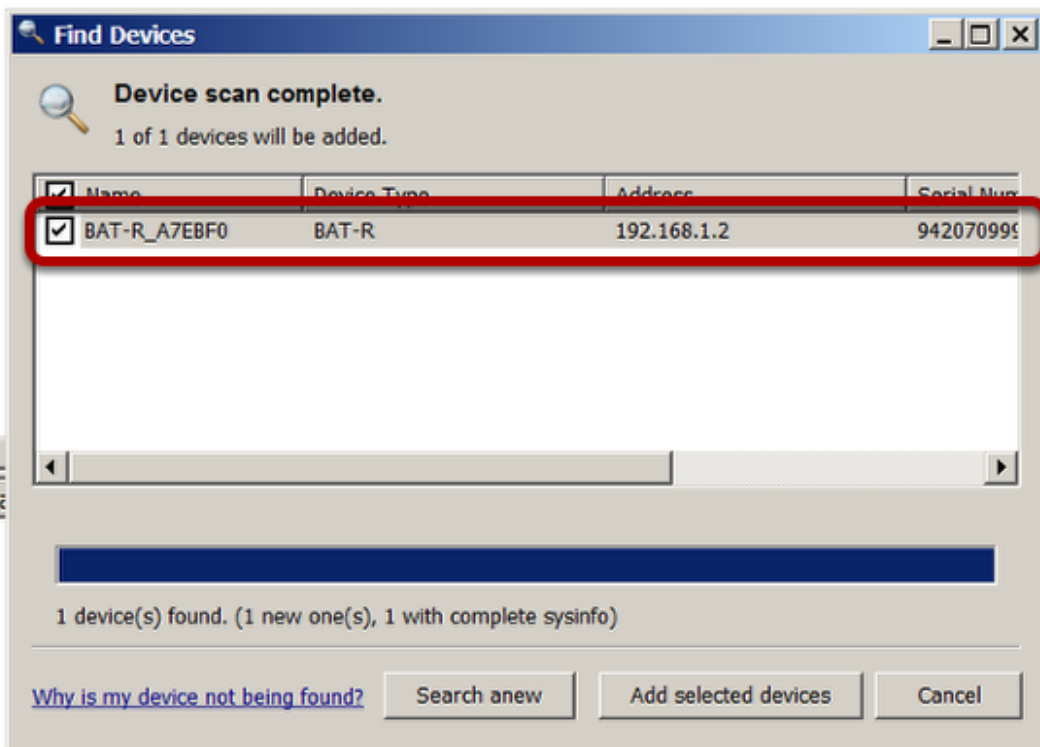


Step 9: Click "Search".

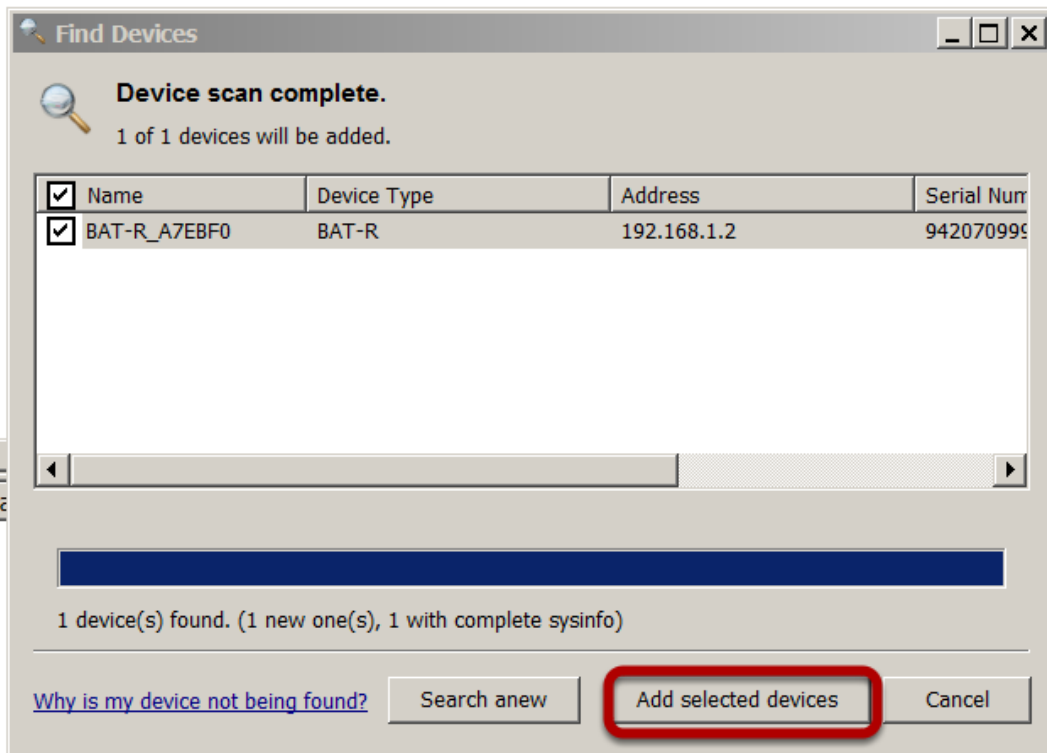


Configuration reading started

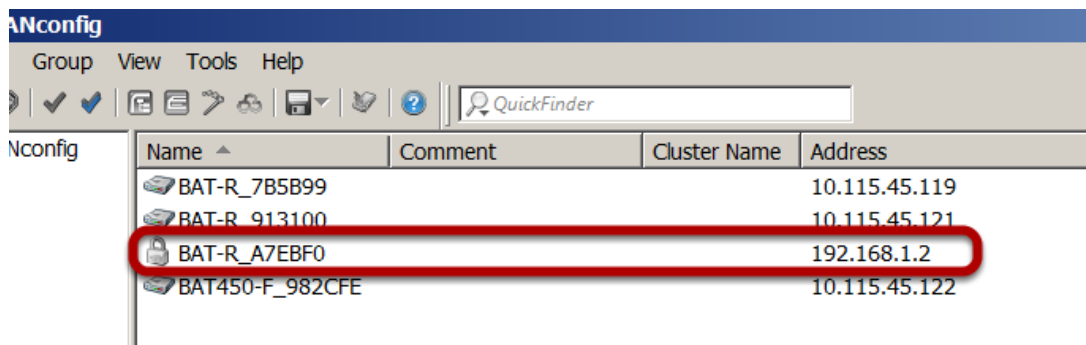
Result: LANconfig shows the newly configured device in the "Find Devices" dialog.



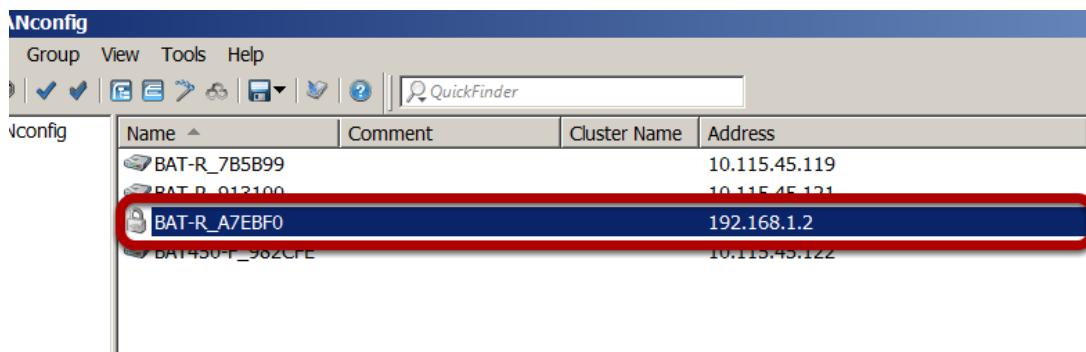
Step 10: Click "Add selected devices".



Result: LANconfig shows the newly configured device in the start dialog.



Step 10: Right-click the newly configured device.

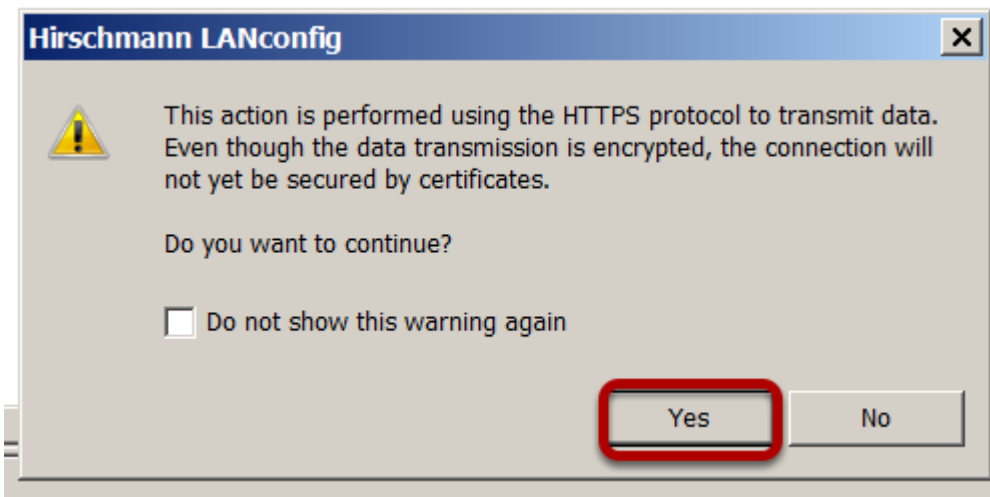


Step 11: Click "Configure".

Name	Comment	Cluster Name	Address	Location
BAT-R_7B5B99			10.115.45.119	
BAT-R_913100			10.115.45.121	
BAT450-F_982CFE			10.115.45.122	
BAT-R_A7EBF0			192.168.1.2	

Configure	Ctrl+O
Setup Wizard	Ctrl+W
Quick Rollback...	Ctrl+Q
Check	Ctrl+F5
Configuration Management	
Firmware Management	
WEBconfig / Console Session	
Monitor Device	
Monitor Device Temporarily	Ctrl+M
Monitor WLAN Device	
Monitor WLAN Device Temporarily	
Create Trace Output...	Ctrl+L
Set Date/Time...	
Activate Software Option...	

Step 12: Click "Yes".



Step 13: Type in the password "private".

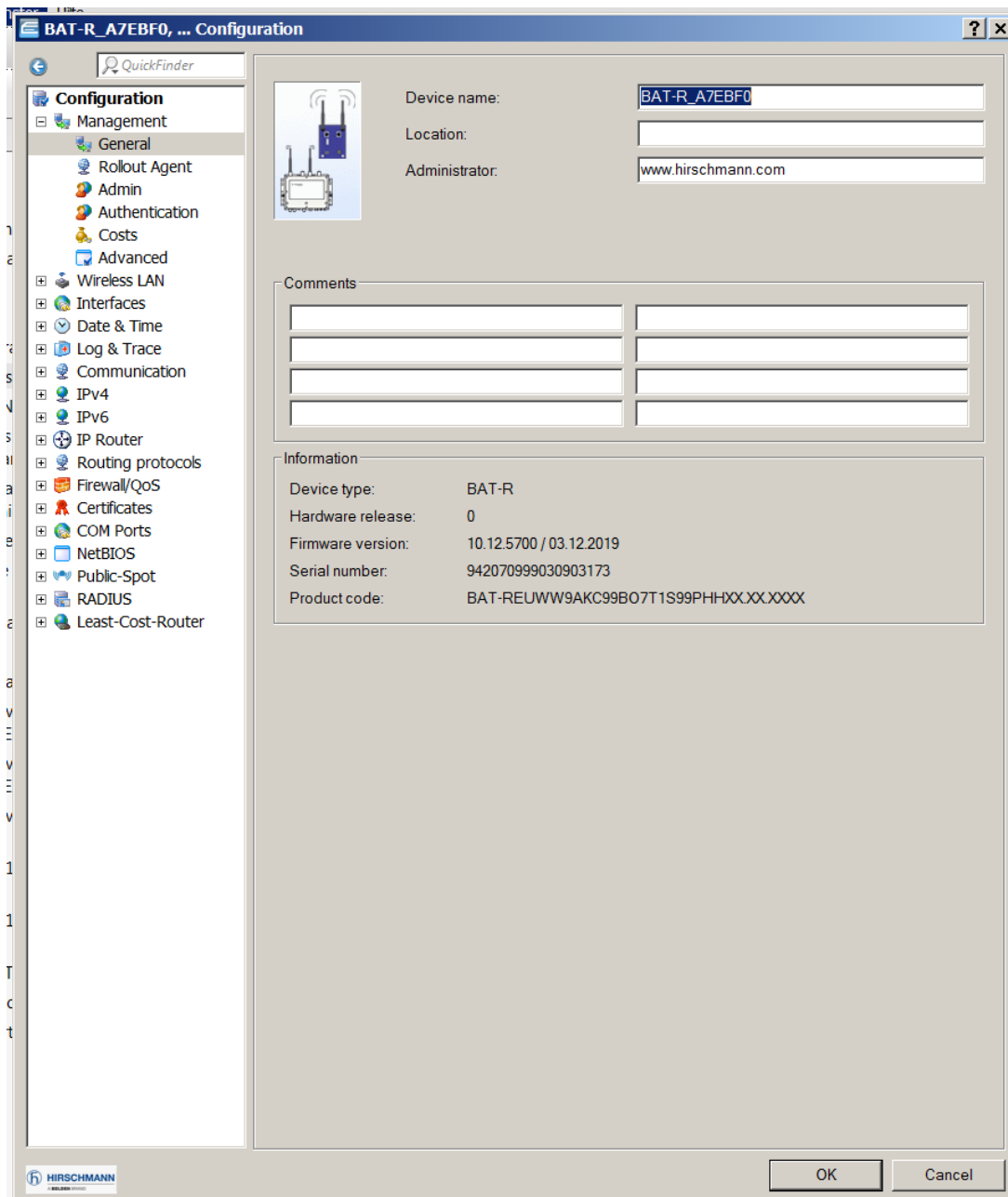


nk for updates is not supported in this version

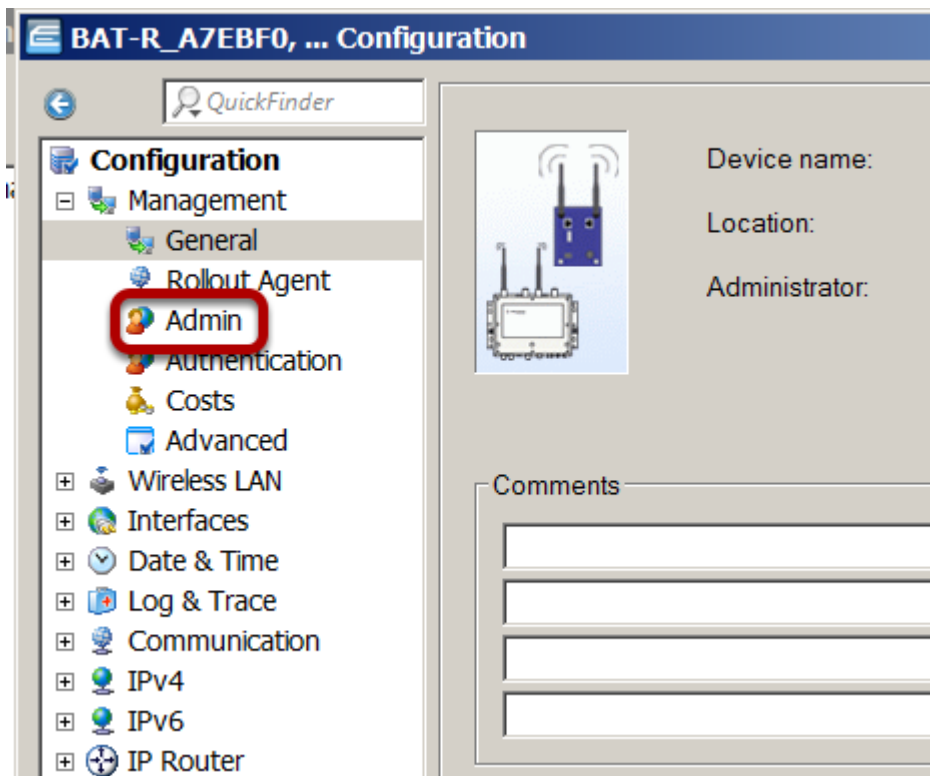
Step 14: Click "OK".



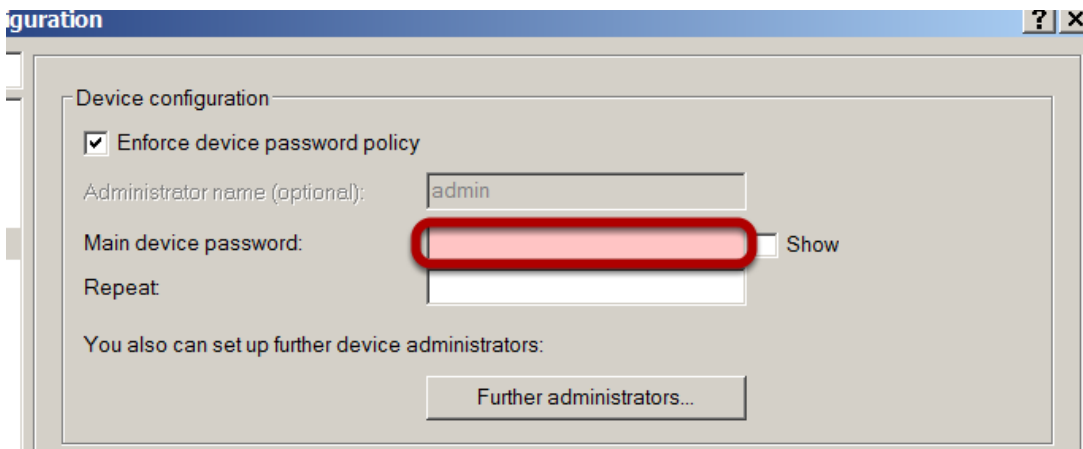
Result: LANconfig opens the "Configuration" dialog.



Step 15: Click "Configuration" > "Admin".



Step 16: Type in a new password that contains at least 8 characters which includes upper-case characters, lower-case characters, numerical digits and special characters.



Step 17: Type in the new password from Step 16 again.

Device configuration

Enforce device password policy

Administrator name (optional):

Main device password: Show

Repeat:

You also can set up further device administrators:

Step 18: Click "OK".

BAT-R_A7EBF0, ... Configuration

QuickFinder

- Configuration
 - Management
 - General
 - Rollout Agent
 - Admin
 - Authentication
 - Costs
 - Advanced
 - Wireless LAN
 - Interfaces
 - Date & Time
 - Log & Trace
 - Communication
 - IPv4
 - IPv6
 - IP Router
 - Routing protocols
 - Firewall/QoS
 - Certificates
 - COM Ports
 - NetBIOS
 - Public-Spot
 - RADIUS
 - Least-Cost-Router

Device configuration

Enforce device password policy

Administrator name (optional):

Main device password: Show

Repeat:

You also can set up further device administrators:

Configuration login lock

Lock configuration after: login failures

Lock configuration for: minutes

Device access

Configure over which channels configurations may be uploaded to and downloaded from the device and through what means the web interface of the device can be reached.

SNMP

Configure the access rights for all protocol versions of SNMP here.

Management protocols

Here you can enter the management protocols port numbers.

Success! You can now configure the device according to your preferences.