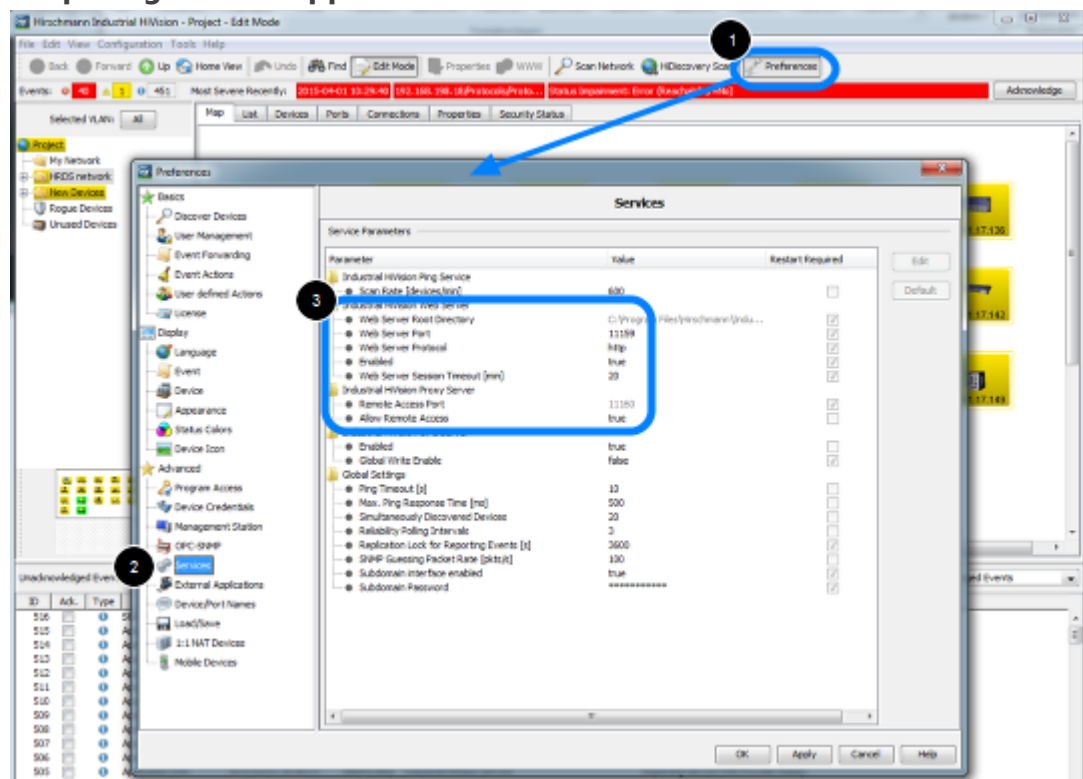


## HiMobile Connect

- 2018-02-21 - Industrial HiVision

This lesson describes how to connect HiMobile 2.0 to a Industrial HiVision Server as of v6.0. The first steps are preparing Industrial HiVision for remote access via the HiMobile APP. Then the needed settings for HiMobile on IOS are described.

### Preparing IHV for app access



To prepare IHV for App access:

1. open the **Preferences** dialog
  2. go to **Services**
  3. enable the webserver and remember the webserver port (default in IHV6.0 11159)
- make sure IHV Proxy Server - Allow Remote Access is set to true

Enabling the webserver requires a restart of IHV.

### Create Web Access Role



Open the preferences dialog again and go to **User Management**.

First of all make sure that you have a local superuser with permission to access the user management..

Create a new access role for **web access**. If you tick just Web Access, Login is selected automatically.

## Create User for Web Access



1. Click on Edit to modify the Local Users Configuration
2. Create a new user
3. Assign user to access role webaccess which you have created in the previous step

## User Management Policy



Specify the policy order for the user management.

In this example we specified a local user for web access that's why just local is in the selected order field.

Click on Ok to close the preferences dialog. A pop-up window appears to offer you to test the user management configuration before activate it.

## HiMobile





# HiMobile



HiMobile is available in the App-Store.  
After installation open the HiMobile settings.

## HiMobile Settings









Configure the following parameters which needs to match to the settings made in Industrial HiVision:

1. Industrial HiVision host (IP address or hostname)
2. The web server port (default in IHV 6.0 11159)
3. Username with permission web access
4. Password
5. scroll down

### Test the connection







Test the connection to make sure all settings are correct and you are able to connect.