

## IGMP Proxy configuration

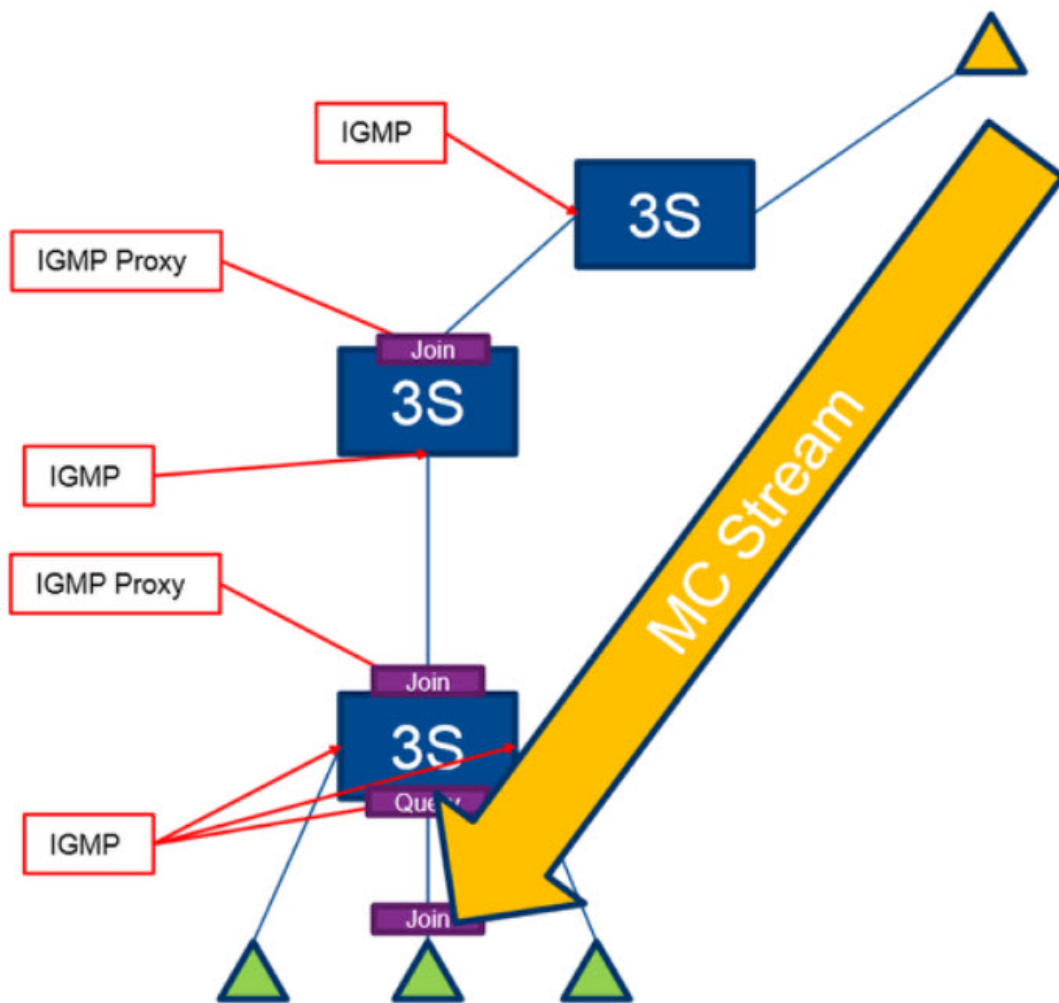
- 2018-02-22 - HiOS

This lesson explains the IGMP Proxy configuration. This feature is available on HiOS 3S devices.

IGMP Proxy is a router function to forward MC streams in an easy way on devices without MC routing capabilities.

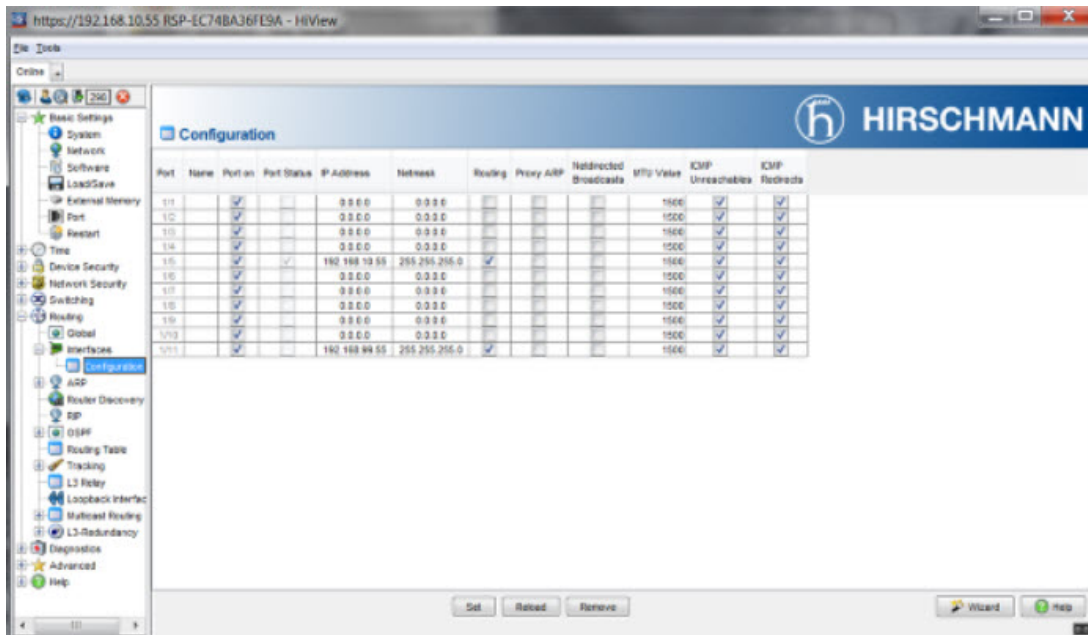
Scenario





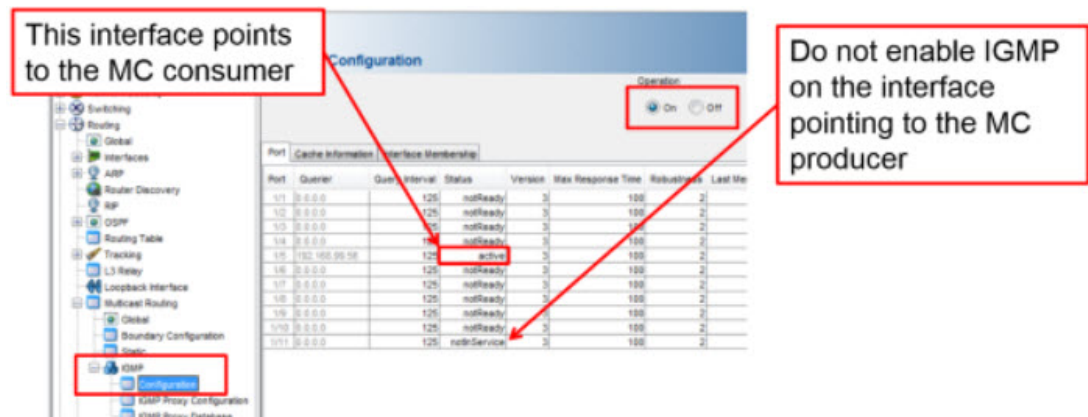
IGMP is needed on the consumer interfaces so the router collects joins from the consumers. IGMP Proxy then forwards the joins to the interface where the producer is located. With IGMP Proxy MC streams can be forwarded in one direction only.

Router Interface Configuration



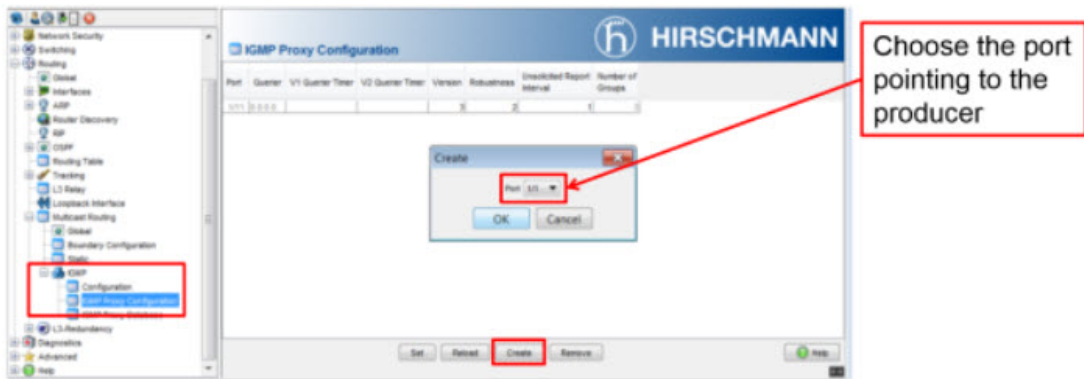
Example router interface configuration

### IGMP Configuration



Enable IGMP on the interface where the consumer is connected

### IGMP Proxy Configuration



Enable IGMP Proxy on the port pointing to the multicast producer.  
Repeat the steps in case you have multiple devices in a chain.