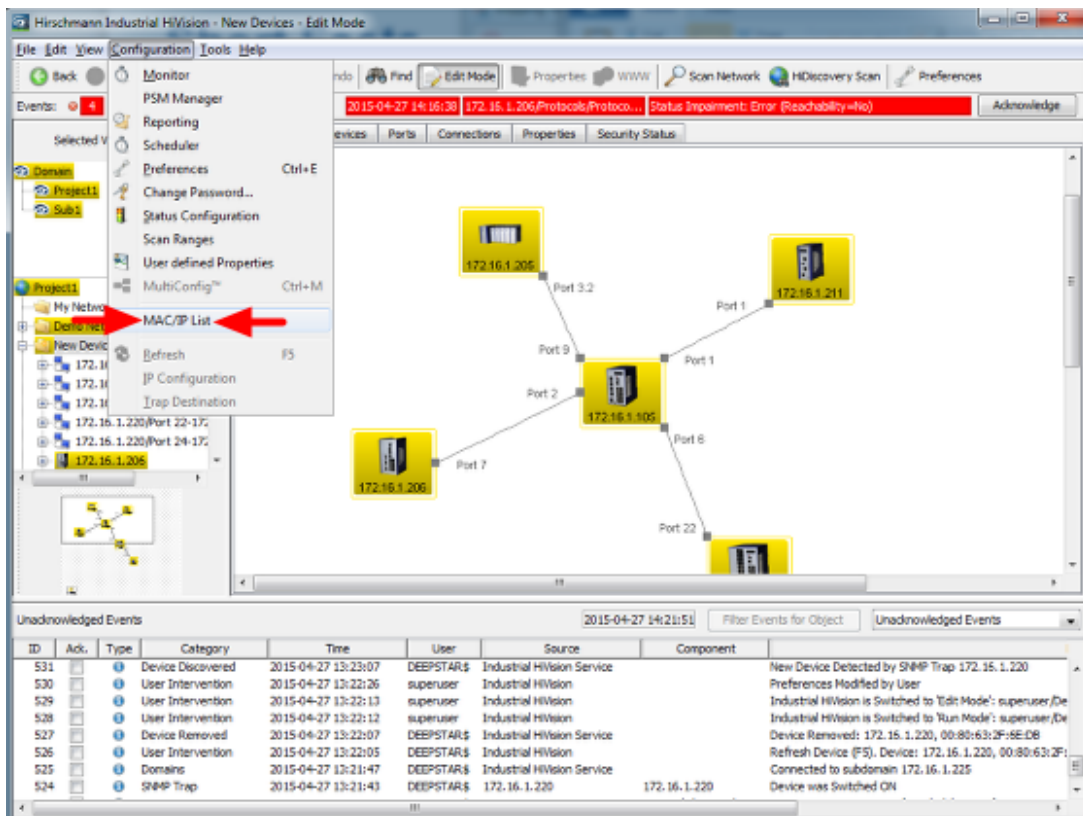


IP/MAC pairs

- 2018-02-21 - Industrial HiVision

IP/MAC pairs is a security feature which is available as of IHV v6.0.

The purpose of this feature is to maintain a list of IP-MAC pairs and to signal if address associations change.

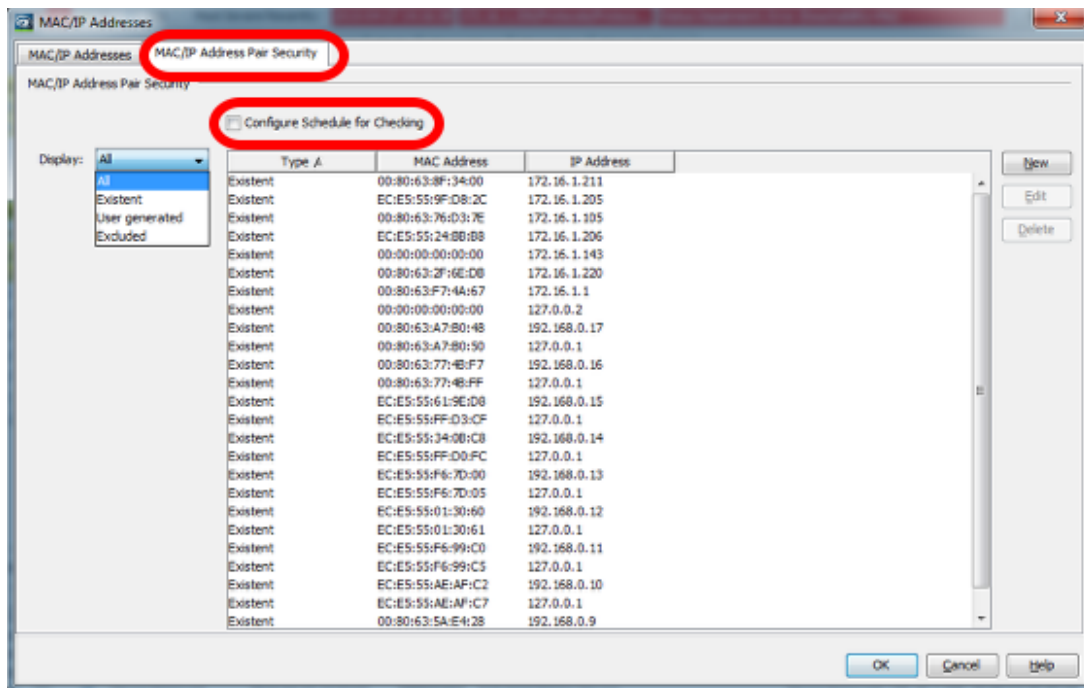


The screenshot shows the Hirschmann Industrial HiVision software interface. The 'Configuration' menu is open, and the 'MAC/IP List' option is highlighted with a red arrow. The main window displays a network diagram with several devices connected to a central hub. The 'Unacknowledged Events' table at the bottom shows a list of events related to device discovery and configuration changes.

ID	Ack.	Type	Category	Time	User	Source	Component	Details
531		Device Discovered		2015-04-27 13:23:07	DEEPSTAR\$	Industrial HiVision Service		New Device Detected by SNMP Trap 172.16.1.220
530		User Intervention		2015-04-27 13:22:26	superuser	Industrial HiVision		Preferences Modified by User
529		User Intervention		2015-04-27 13:22:13	superuser	Industrial HiVision		Industrial HiVision is Switched to 'Idle Mode': superuser/De
528		User Intervention		2015-04-27 13:22:12	superuser	Industrial HiVision		Industrial HiVision is Switched to 'Run Mode': superuser/De
527		Device Removed		2015-04-27 13:22:07	DEEPSTAR\$	Industrial HiVision Service		Device Removed: 172.16.1.220, 00:80:63:2F:8E:08
526		User Intervention		2015-04-27 13:22:05	DEEPSTAR\$	Industrial HiVision		Refresh Device (F5). Device: 172.16.1.220, 00:80:63:2F:
525		Domains		2015-04-27 13:21:47	DEEPSTAR\$	Industrial HiVision Service		Connected to subdomain 172.16.1.225
524		SNMP Trap		2015-04-27 13:21:43	DEEPSTAR\$	172.16.1.220	172.16.1.220	Device was Switched ON

Select **Configuration - MAC/IP List** from the menu to open the current list of address pairs.

MAC/IP address pair list



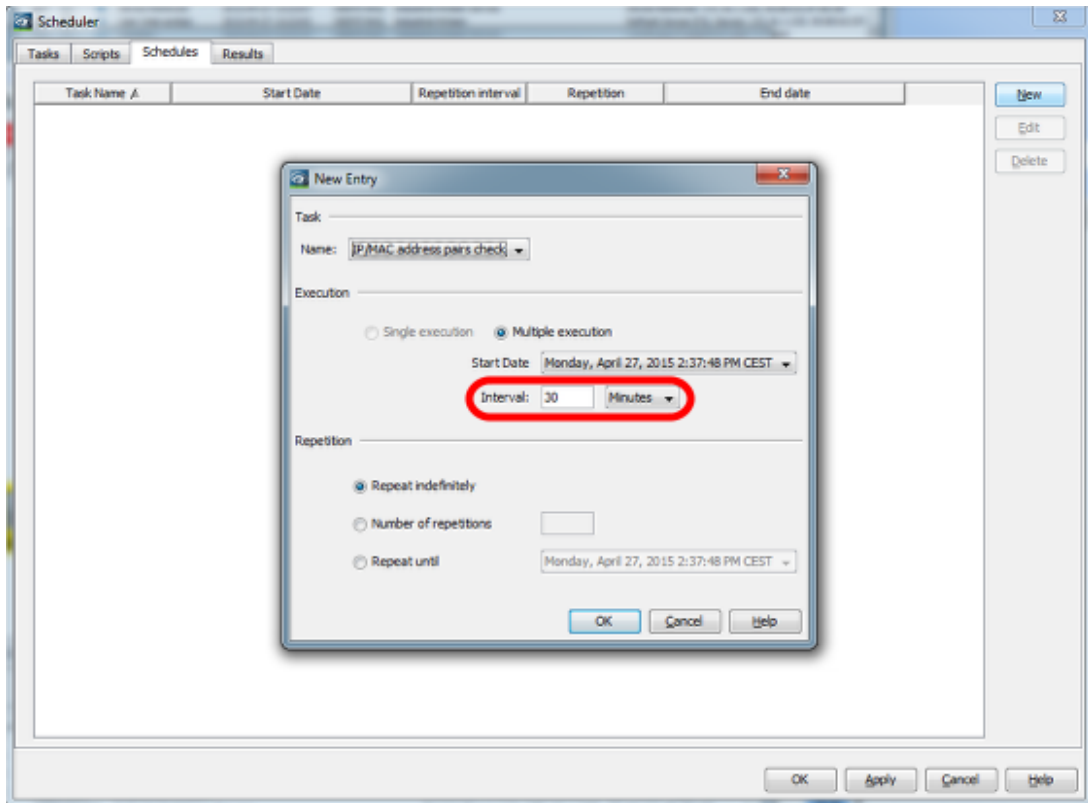
Change to the tab MAC/IP Address Pair Security.

IP/MAC pairs contained by this list will be differentiated between three types:

- Existent (in field)
- User generated (they are manually added by the user using add functionality or by selecting one of the existent pair and edit it).
- Excluded/Excepted (these are also added by user manually or by selecting and editing/converting an existent record. These do not preserve the MAC Address. For them will never be raised a warning event.

If **Configure Schedule for Checking** is checked the scheduler dialog will appear on leaving this dialog.

Scheduler



In this dialog you can specify the schedule for checking IP/MAC pairs.
The minimum interval for this feature is 30 minutes.

Log Message

ID	Act.	Type	Category	Time	User	Source	Component	Message
AK2			Scheduler	2015-04-27 14:06:15	adminuser	IP-MAC-Monitor Service		MAC address changed for IP address:03:60:53:0F:3A(C1):00:00:43:00:41(0)
AK3			Status Administration	2015-04-27 14:06:15	adminuser	192.168.1.100(Net 1:192.168.1.100)	192.168.1.100(Net 1:192.168.1.100)	Status Change Administration OK