

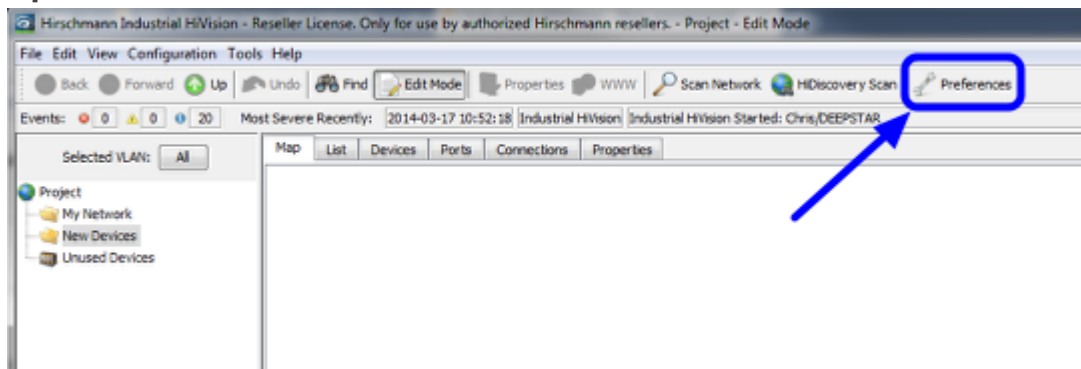
## How to add an Industrial HiVision license

- 2022-01-10 - Industrial HiVision

This howto describes the procedure to add a license in Industrial HiVision (IHV).

Prerequisites: Installed Industrial HiVision, eMail with IHV license code

### Open IHV Preferences



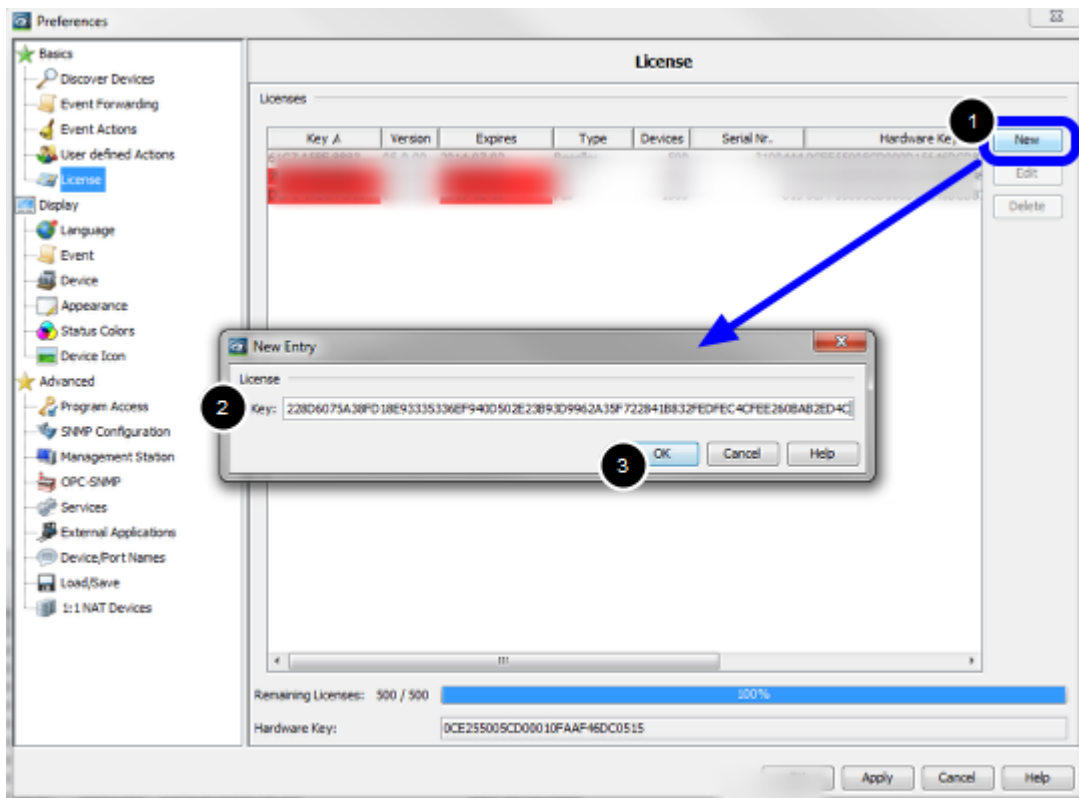
Start Industrial HiVision and open the '**Prefrences**' dialog (Configuration - Preferences)

### eMail including License Key



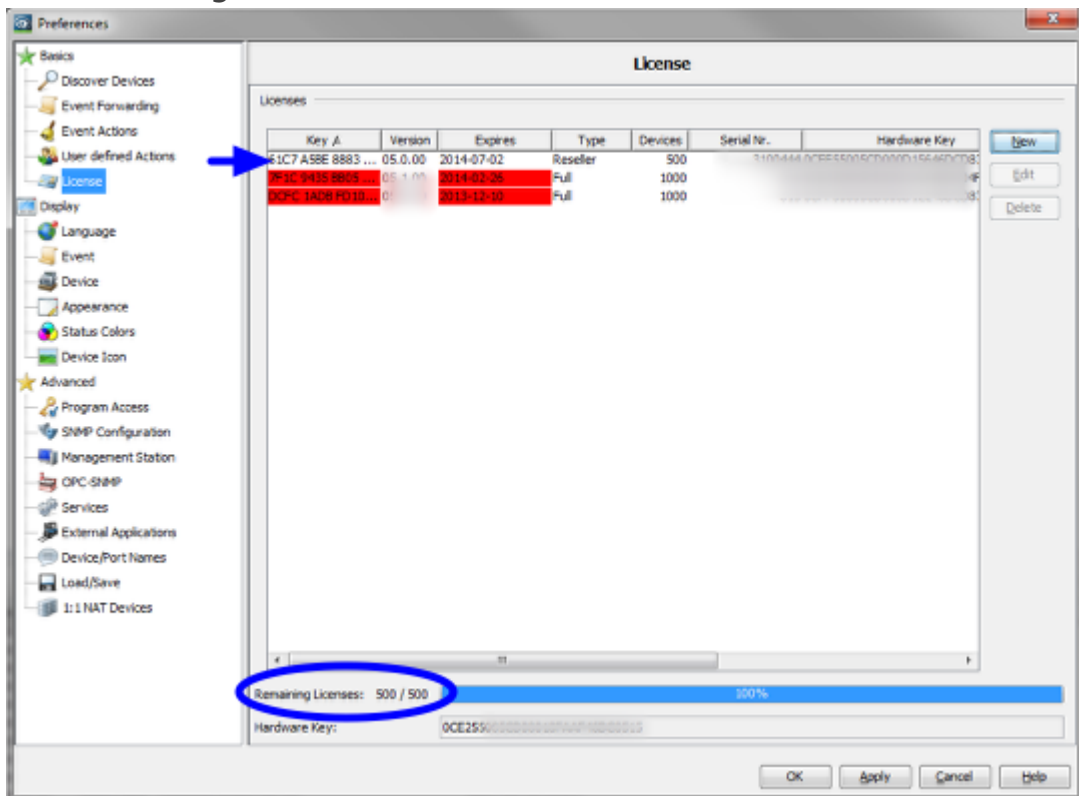
Copy the license code from the received eMail.

### License Dialog - New Entry



1. Click '**New**' to add an entry
2. Paste the license key from the received license eMail
3. Close the pop-up window with '**Ok**'

### License Dialog - check for valid license



Valid licenses are shown without background color, red entries are expired.  
Below you can see the total number and remaining licenses.

### Event log message



The screenshot shows a window titled "Unacknowledged Events" with a table of event logs. The table has columns for ID, Ack., Type, Category, Time, User, Source, Component, and Message. Three entries are visible, all with the "Ack." checkbox unchecked. The first entry (ID 65) is a "User Intervention" event. The second (ID 66) and third (ID 67) are "License" events, with the third message indicating a total of 3300 licenses.

ID	Ack.	Type	Category	Time	User	Source	Component	Message
65	<input type="checkbox"/>	 User Intervention	User Intervention	2014-03-17 16:03:57		Industrial HiVision		Preferences Modified by User
66	<input type="checkbox"/>	 License	License	2014-03-17 16:03:57		Industrial HiVision Service		Industrial HiVision is licensed
67	<input type="checkbox"/>	 License	License	2014-03-17 16:03:57		Industrial HiVision Service		Number of Licenses: 3300

After closing the preferences dialog you can see an event log with the new number of licenses.