

## How to do a general firmware update using Industrial HiVision and Multiconfig

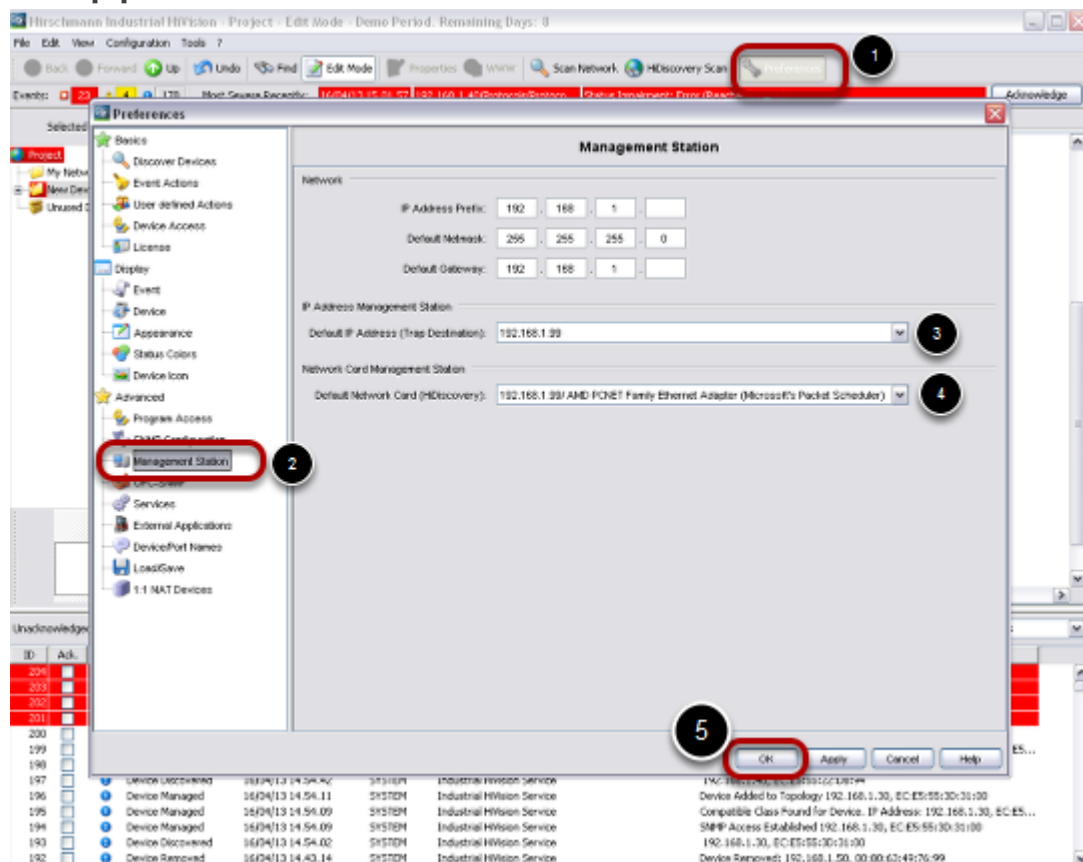
- 2018-02-21 - Industrial HiVision

The goal of this procedure is to update the firmware of several switches using Industrial HiVision and Multiconfig.

### Prerequisites

1. Power up all the switches and connect them together creating a bus topology.
2. Download and install Industrial HiVision (IHV) on a pc. IHV can be downloaded here: <http://hivision.de/English/download/index.phtml>. The program has full functionalities for a limited period of 30 days.
3. The firmware you want to installed has been stored on your pc.

### Set up preferences



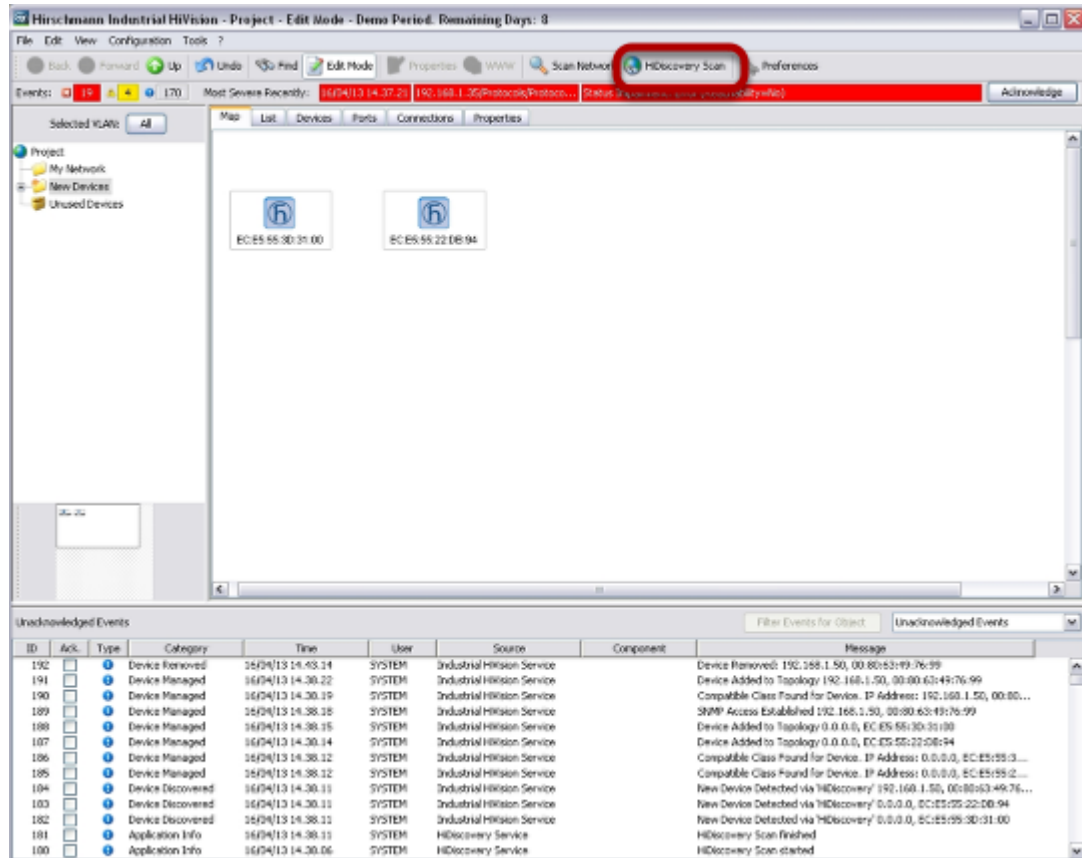
1. Connect the pc with IHV to one of the switches of the network.

2. Launch IHV.
3. Go to 'Preferences', 'Management Station' and check that in 'Default IP Address' and 'Default Network Card' is selected the right network card of your pc. Click ok.

## Disable Firewall on you pc

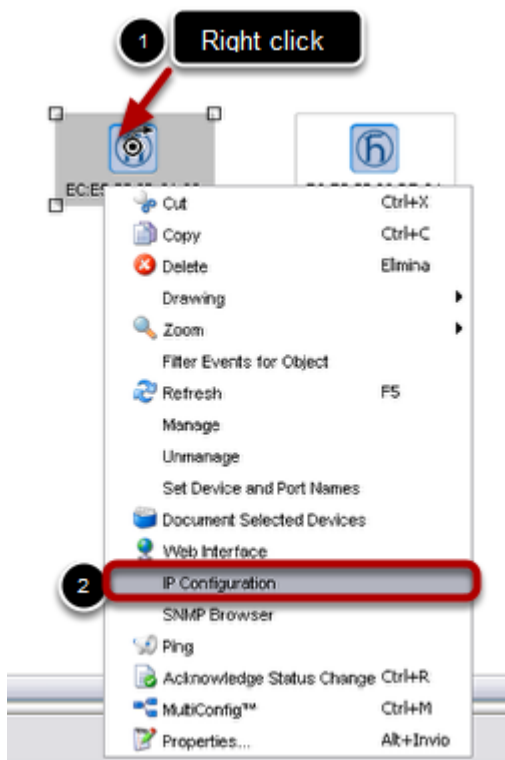
Disable all firewalls on your pc.

## Discover the switches of your network

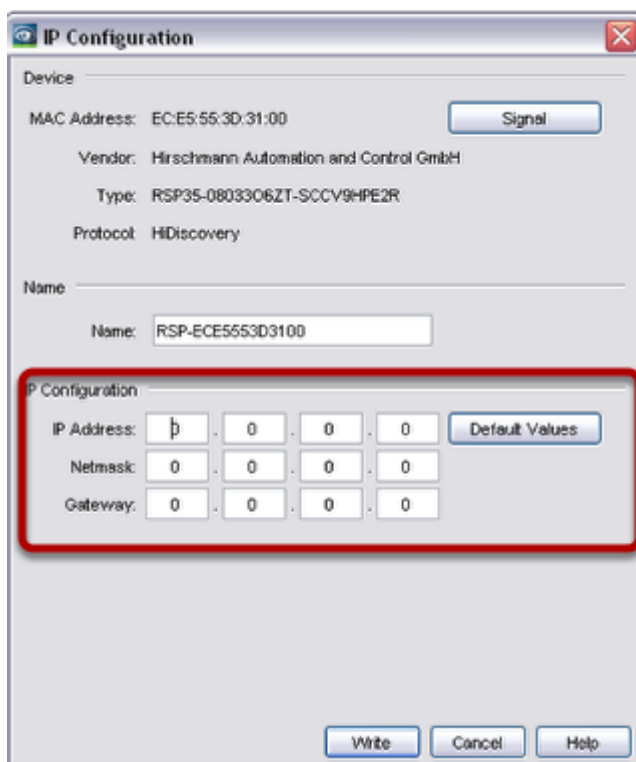


Click 'HiDiscovery Scan'. The system will look for Hirschmann switches. In the example, 2 new switches had been discovered.

## IP assignment



Assign an IP address to each switch, right clicking on a switch, 'IP configuration'.

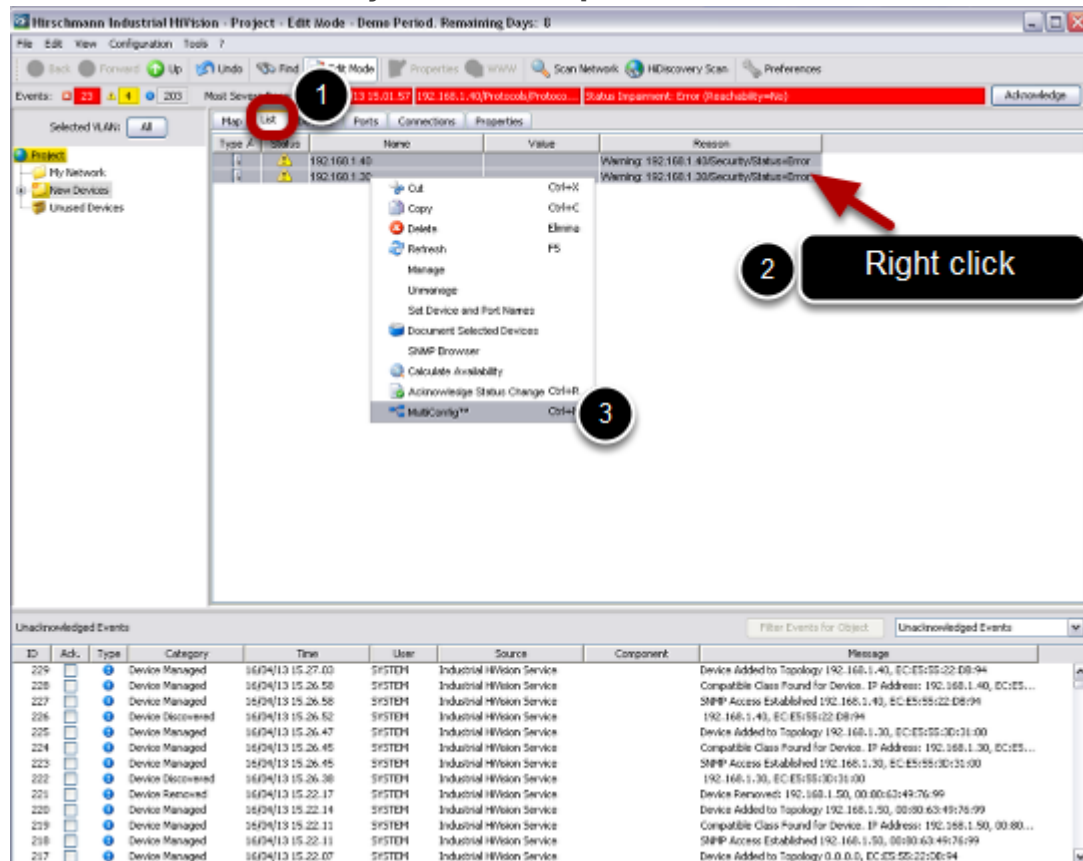


Type IP and subnet mask according to your network addressing plan.

### Optional

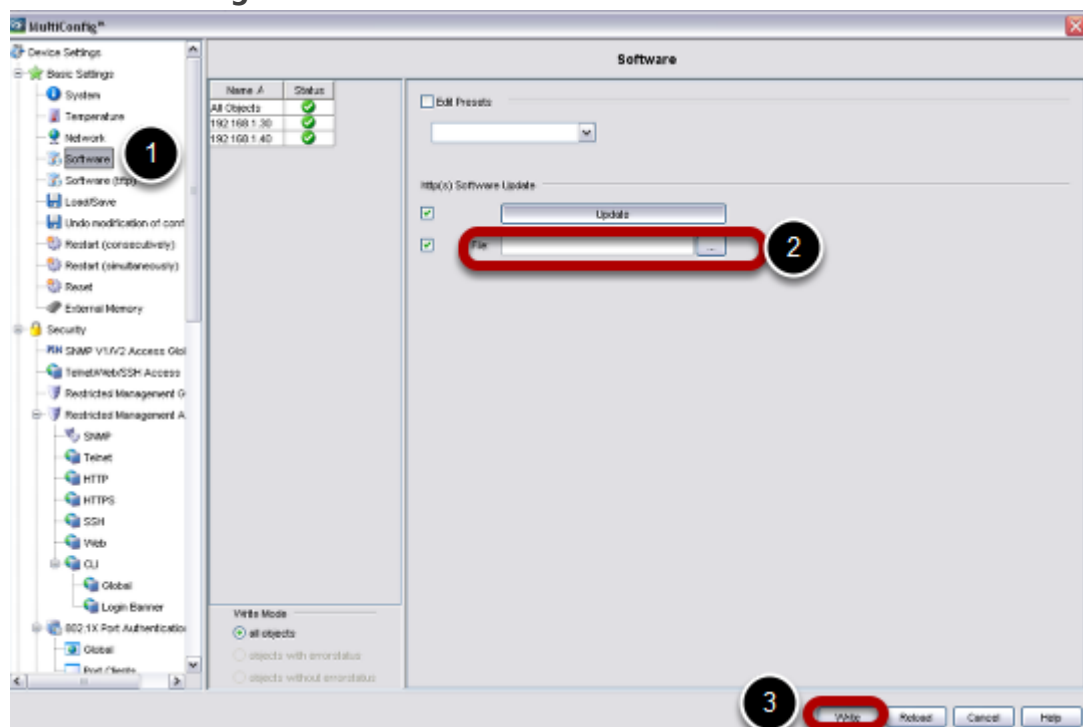
If you want to create the network topology, right click in an empty space and select auto topology.

## Select all the switches you want to update



Click on 'List' tab, select all the switches you want to update, then right click, Multiconfig

## Use Multiconfig

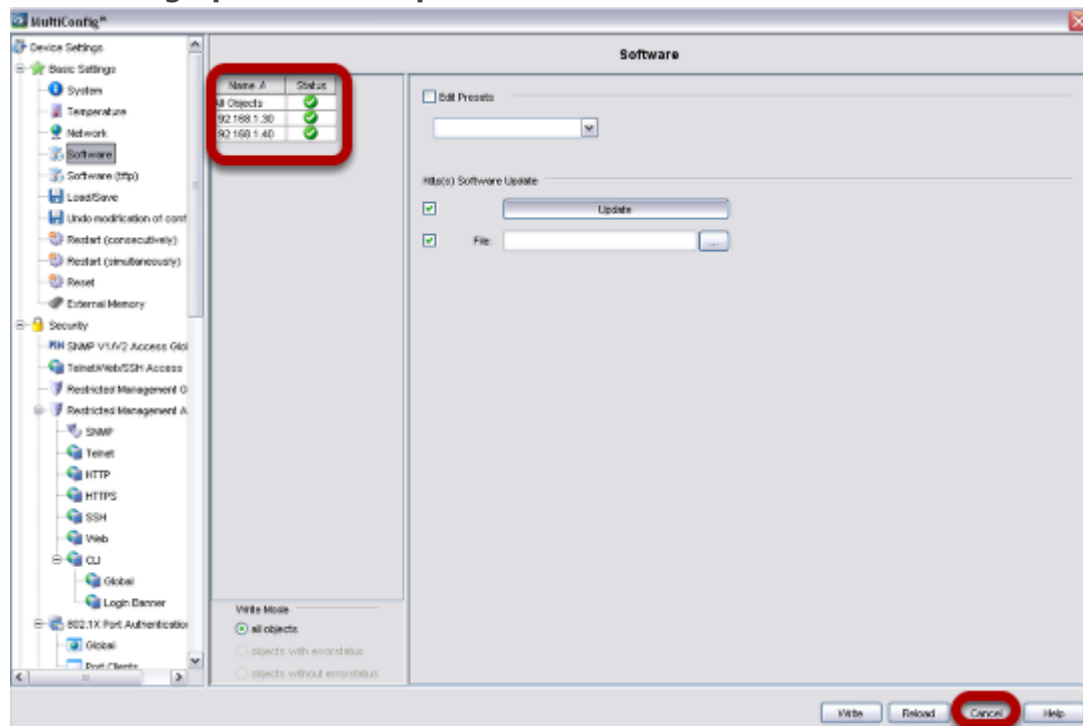


Go to 'Basic Settings', select 'Software'.

In 'File', please specify the path in which you stored the firmware to use.

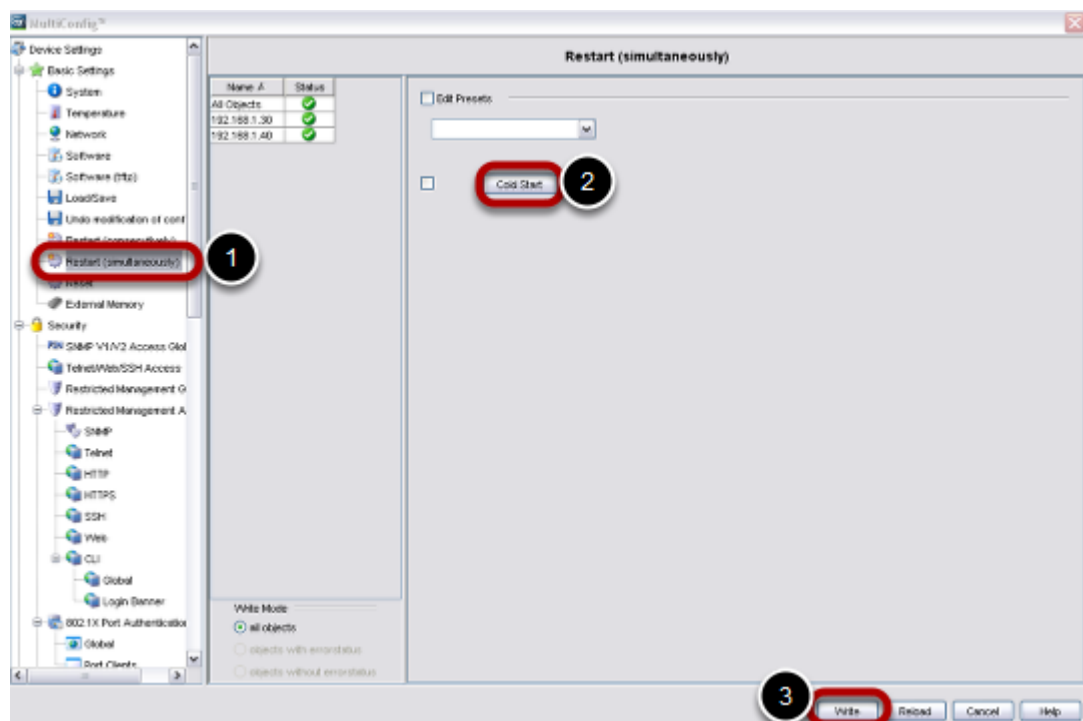
Click 'Write'

## Multiconfig operation completed



When Multiconfig completes the operations, you can see a green sign. To close this window, click 'Cancel'

## Reboot the switches



Using again Multiconfig, go to 'Basic Settings', 'Restart (simultaneously)', 'Cold Start' and reboot the switches.

## Check new firmware version

The screenshot shows the Hirschmann Industrial HiVision software interface. The top menu bar includes File, Edit, View, Configuration, and Tools. Below the menu bar, there are buttons for Back, Forward, Up, Undo, Find, Edit Mode, Properties, Scan Network, HiDiscovery Scan, and Preferences. The main window is divided into several sections:

- Events:** A red banner at the top indicates a "Status Impairment: Error (Reachability=No)" for device 192.168.1.40.
- Selected VLAN:** A dropdown menu showing "All".
- Map:** A tree view on the left showing the network topology with "My Network", "New Devices", and "Unused Devices".
- Table:** A table listing devices with columns for Type, Status, Name, IP Address, Product, Chassis, System Name, Location, Contact, and Software Version. The "Software Version" column for device 192.168.1.40 is highlighted with a red box.
- Unacknowledged Events:** A table at the bottom showing a list of events with columns for ID, Ack., Type, Category, Time, User, Source, Component, and Message.

Type	Status	Name	IP Address	Product	Chassis	System Name	Location	Contact	Software Version
Light	OK	192.168.1.30	192.168.1.30	RSP35-080...	RSP35	RSP-ECES553031...	Hirschmann RSP	Hirschmann Aus...	1.1.01
Light	OK	192.168.1.40	192.168.1.40	RSP35-080...	RSP35	RSP-ECES553031...	Hirschmann RSP	Hirschmann Aus...	1.1.01

ID	Ack.	Type	Category	Time	User	Source	Component	Message
236	<input type="checkbox"/>	User Intervention	16/04/13 15:43:08	SYSTEM	Industrial HiVision			Refresh Device (FS): Device: 192.168.1.30, EC:ES:55:30:31:00
235	<input type="checkbox"/>	User Intervention	16/04/13 15:43:06	SYSTEM	Industrial HiVision			Refresh Device (FS): Device: 192.168.1.40, EC:ES:55:30:31:00
234	<input type="checkbox"/>	Status Better	16/04/13 15:42:34	SYSTEM	192.168.1.30	Protocol/Protocol Sn...		Status Improvement: OK (Reachability=Yes)
233	<input type="checkbox"/>	Status Better	16/04/13 15:42:05	SYSTEM	192.168.1.40	Protocol/Protocol Sn...		Status Improvement: OK (Reachability=Yes)
232	<input checked="" type="checkbox"/>	Status Worse	16/04/13 15:42:05	SYSTEM	192.168.1.30	Protocol/Protocol Sn...		Status Impairment: Error (Reachability=No)
231	<input checked="" type="checkbox"/>	Status Worse	16/04/13 15:41:40	SYSTEM	192.168.1.40	Protocol/Protocol Sn...		Status Impairment: Error (Reachability=No)
230	<input type="checkbox"/>	User Intervention	16/04/13 15:39:30	SYSTEM	Industrial HiVision			Refresh Device (FS): Device: 192.168.1.30, EC:ES:55:30:31:00
229	<input type="checkbox"/>	Device Managed	16/04/13 15:27:03	SYSTEM	Industrial HiVision Service			Device Added to Topology 192.168.1.40, EC:ES:55:30:31:00
228	<input type="checkbox"/>	Device Managed	16/04/13 15:26:58	SYSTEM	Industrial HiVision Service			Compatible Class Found for Device: IP Address: 192.168.1.40, EC:ES:...
227	<input type="checkbox"/>	Device Managed	16/04/13 15:26:58	SYSTEM	Industrial HiVision Service			SNMP Access Established 192.168.1.40, EC:ES:55:30:31:00
226	<input type="checkbox"/>	Device Discovered	16/04/13 15:26:52	SYSTEM	Industrial HiVision Service			192.168.1.40, EC:ES:55:30:31:00
225	<input type="checkbox"/>	Device Managed	16/04/13 15:26:47	SYSTEM	Industrial HiVision Service			Device Added to Topology 192.168.1.30, EC:ES:55:30:31:00
224	<input type="checkbox"/>	Device Managed	16/04/13 15:26:45	SYSTEM	Industrial HiVision Service			Compatible Class Found for Device: IP Address: 192.168.1.30, EC:ES:...

Under 'List' select all you switches, press 'F5', check that the new firmware version is shown.