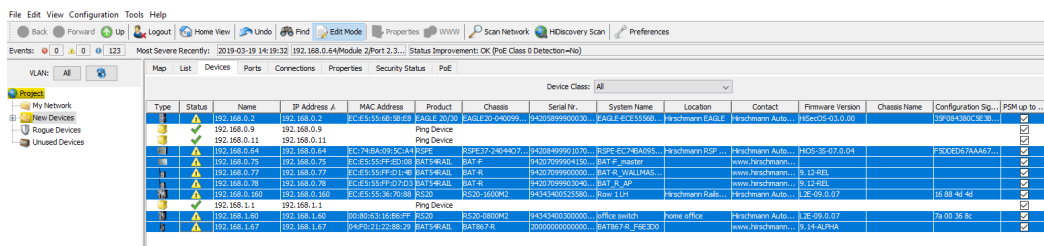


Industrial Hivision - Scheduled Device Configuration Backup

John M - 2023-12-19 - Industrial HiVision

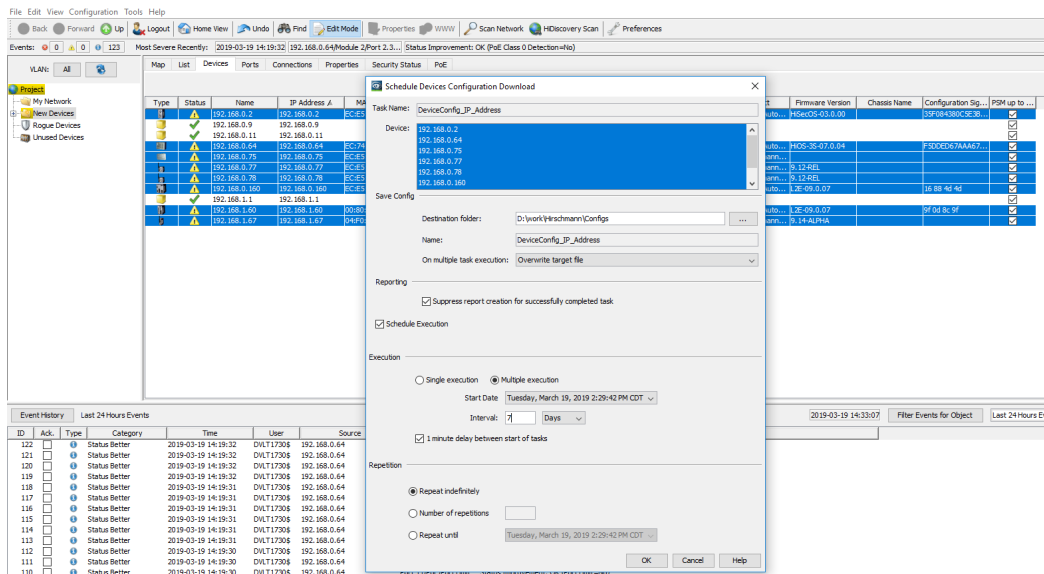
This guide is designed to walk through the steps to configure Hirschmann Industrial HiVision to enable the scheduled remote backup of Configurations of the Hirschmann devices in a project.

1. Once Hivision is running go to the Device tab and highlight the devices that need the configurations saved, right click on one of the highlighted devices and select Save Device Configuration



Type	Status	Name	IP Address A	MAC Address	Product	Chassis	Serial Nr.	System Name	Location	Contact	Firmware Version	Chassis Name	Configuration Sig...	PSM up to ...
1	✓	192.168.0.2	192.168.0.2	EC-E5-15-6F-00-00-00	EC-E5-15-6F-00-00-00	EC-E5-15-6F-00-00-00	EC-E5-15-6F-00-00-00	EC-E5-15-6F-00-00-00	Hirschmann Auto	Hirschmann Auto	EC-E5-15-6F-00-00-00	EC-E5-15-6F-00-00-00	EC-E5-15-6F-00-00-00	EC-E5-15-6F-00-00-00
2	✓	192.168.0.9	192.168.0.9	EC-E5-15-6F-00-00-00	EC-E5-15-6F-00-00-00	EC-E5-15-6F-00-00-00	EC-E5-15-6F-00-00-00	EC-E5-15-6F-00-00-00	Hirschmann Auto	Hirschmann Auto	EC-E5-15-6F-00-00-00	EC-E5-15-6F-00-00-00	EC-E5-15-6F-00-00-00	EC-E5-15-6F-00-00-00
3	✓	192.168.0.11	192.168.0.11	EC-E5-15-6F-00-00-00	EC-E5-15-6F-00-00-00	EC-E5-15-6F-00-00-00	EC-E5-15-6F-00-00-00	EC-E5-15-6F-00-00-00	Hirschmann Auto	Hirschmann Auto	EC-E5-15-6F-00-00-00	EC-E5-15-6F-00-00-00	EC-E5-15-6F-00-00-00	EC-E5-15-6F-00-00-00
4	✓	192.168.0.64	192.168.0.64	EC-E5-15-6F-00-00-00	EC-E5-15-6F-00-00-00	EC-E5-15-6F-00-00-00	EC-E5-15-6F-00-00-00	EC-E5-15-6F-00-00-00	Hirschmann Auto	Hirschmann Auto	EC-E5-15-6F-00-00-00	EC-E5-15-6F-00-00-00	EC-E5-15-6F-00-00-00	EC-E5-15-6F-00-00-00
5	✓	192.168.0.75	192.168.0.75	EC-E5-15-6F-00-00-00	EC-E5-15-6F-00-00-00	EC-E5-15-6F-00-00-00	EC-E5-15-6F-00-00-00	EC-E5-15-6F-00-00-00	Hirschmann Auto	Hirschmann Auto	EC-E5-15-6F-00-00-00	EC-E5-15-6F-00-00-00	EC-E5-15-6F-00-00-00	EC-E5-15-6F-00-00-00
6	✓	192.168.0.77	192.168.0.77	EC-E5-15-6F-00-00-00	EC-E5-15-6F-00-00-00	EC-E5-15-6F-00-00-00	EC-E5-15-6F-00-00-00	EC-E5-15-6F-00-00-00	Hirschmann Auto	Hirschmann Auto	EC-E5-15-6F-00-00-00	EC-E5-15-6F-00-00-00	EC-E5-15-6F-00-00-00	EC-E5-15-6F-00-00-00
7	✓	192.168.0.79	192.168.0.79	EC-E5-15-6F-00-00-00	EC-E5-15-6F-00-00-00	EC-E5-15-6F-00-00-00	EC-E5-15-6F-00-00-00	EC-E5-15-6F-00-00-00	Hirschmann Auto	Hirschmann Auto	EC-E5-15-6F-00-00-00	EC-E5-15-6F-00-00-00	EC-E5-15-6F-00-00-00	EC-E5-15-6F-00-00-00
8	✓	192.168.0.78	192.168.0.78	EC-E5-15-6F-00-00-00	EC-E5-15-6F-00-00-00	EC-E5-15-6F-00-00-00	EC-E5-15-6F-00-00-00	EC-E5-15-6F-00-00-00	Hirschmann Auto	Hirschmann Auto	EC-E5-15-6F-00-00-00	EC-E5-15-6F-00-00-00	EC-E5-15-6F-00-00-00	EC-E5-15-6F-00-00-00
9	✓	192.168.0.160	192.168.0.160	EC-E5-15-6F-00-00-00	EC-E5-15-6F-00-00-00	EC-E5-15-6F-00-00-00	EC-E5-15-6F-00-00-00	EC-E5-15-6F-00-00-00	Hirschmann Auto	Hirschmann Auto	EC-E5-15-6F-00-00-00	EC-E5-15-6F-00-00-00	EC-E5-15-6F-00-00-00	EC-E5-15-6F-00-00-00
10	✓	192.168.1.1	192.168.1.1	EC-E5-15-6F-00-00-00	EC-E5-15-6F-00-00-00	EC-E5-15-6F-00-00-00	EC-E5-15-6F-00-00-00	EC-E5-15-6F-00-00-00	Hirschmann Auto	Hirschmann Auto	EC-E5-15-6F-00-00-00	EC-E5-15-6F-00-00-00	EC-E5-15-6F-00-00-00	EC-E5-15-6F-00-00-00
11	✓	192.168.1.60	192.168.1.60	EC-E5-15-6F-00-00-00	EC-E5-15-6F-00-00-00	EC-E5-15-6F-00-00-00	EC-E5-15-6F-00-00-00	EC-E5-15-6F-00-00-00	Hirschmann Auto	Hirschmann Auto	EC-E5-15-6F-00-00-00	EC-E5-15-6F-00-00-00	EC-E5-15-6F-00-00-00	EC-E5-15-6F-00-00-00
12	✓	192.168.1.67	192.168.1.67	EC-E5-15-6F-00-00-00	EC-E5-15-6F-00-00-00	EC-E5-15-6F-00-00-00	EC-E5-15-6F-00-00-00	EC-E5-15-6F-00-00-00	Hirschmann Auto	Hirschmann Auto	EC-E5-15-6F-00-00-00	EC-E5-15-6F-00-00-00	EC-E5-15-6F-00-00-00	EC-E5-15-6F-00-00-00

2. Browse to the location the configurations need to be saved to, set the start time (making sure to leave enough time to finish the schedule before it starts), and frequency the configurations need to be saved. Then make sure all of the other settings are selected properly and click OK.



Schedule Devices Configuration Download

Task Name: DeviceConfig_IP_Address

Devices: 192.168.0.2, 192.168.0.9, 192.168.0.11, 192.168.0.64, 192.168.0.75, 192.168.0.77, 192.168.0.79, 192.168.0.78, 192.168.0.160, 192.168.1.1, 192.168.1.60, 192.168.1.67

Save Config:

Destination folder: D:\work\Hirschmann\Configs

Name: DeviceConfig_IP_Address

On multiple task execution: Overwrite target file

Reporting:

☒ Suppress report creation for successfully completed task

☒ Schedule Execution

Execution:

☐ Single execution ☒ Multiple execution

Start Date: Tuesday, March 19, 2019 2:29:42 PM CDT

Interval: 7 Days

☒ 1 minute delay between start of tasks

Repetition:

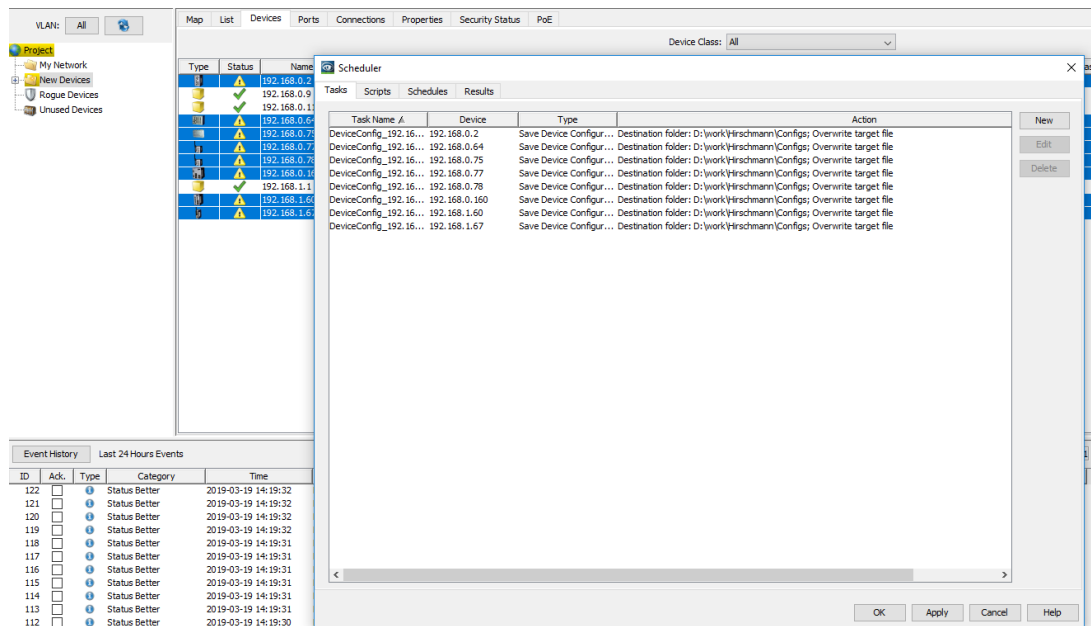
☒ Repeat indefinitely

☐ Number of repetitions:

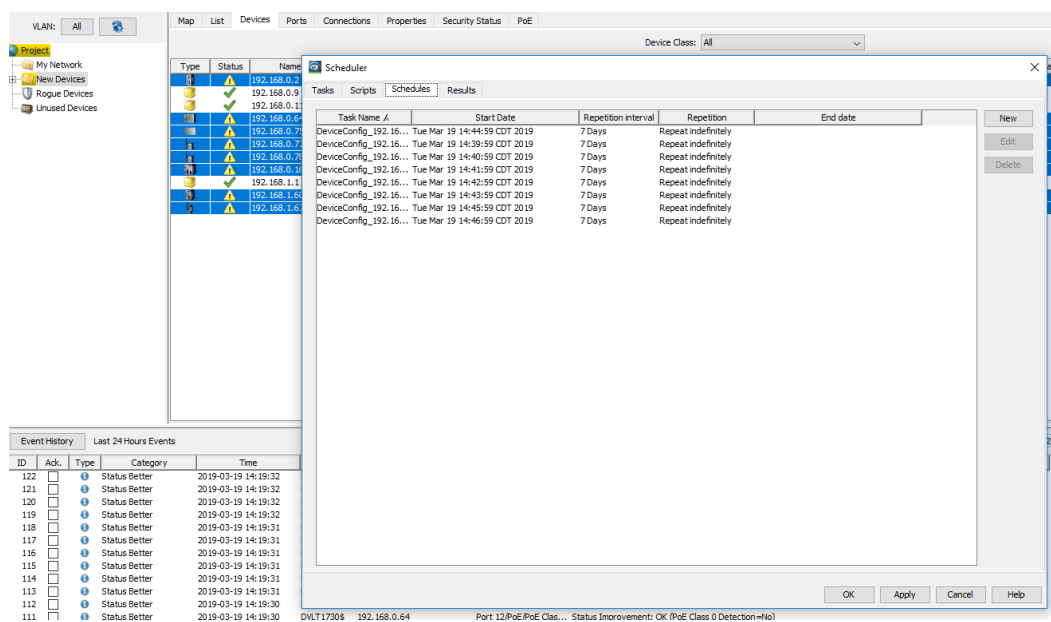
☐ Repeat until: Tuesday, March 19, 2019 2:29:42 PM CDT

OK Cancel Help

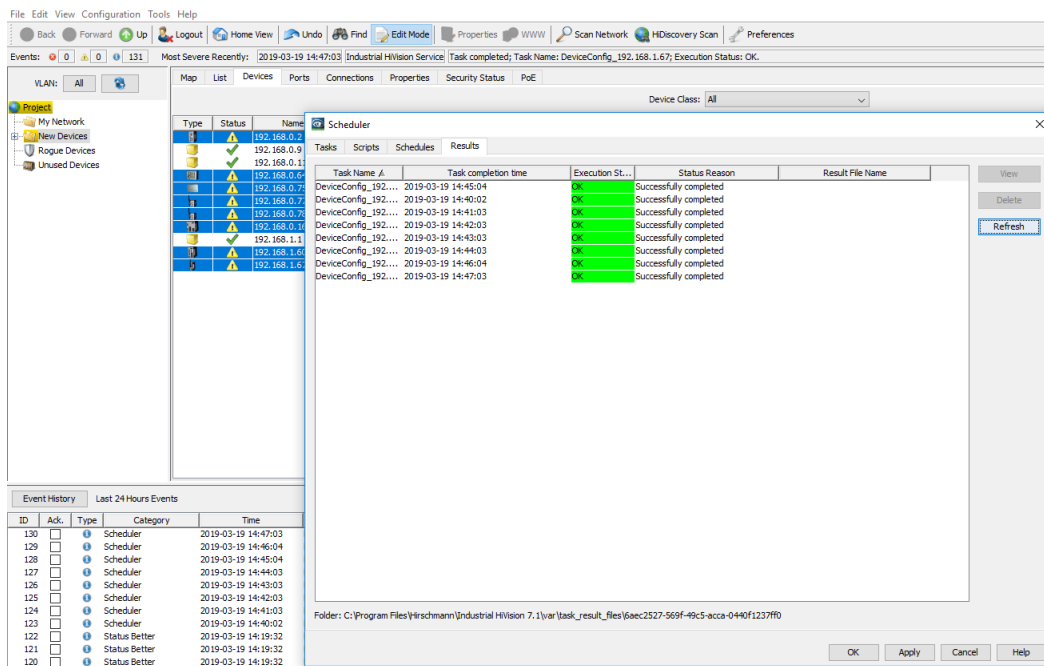
3. To verify it has been scheduled click on Configuration in the taskbar and select Scheduler, the task tab will show the devices and the task to be performed



4. The schedules tab will show the schedule to perform the tasks.



5. To verify the tasks have been completed click on the results tab.



6. Finally verify the configurations have been saved to the correct location.

