

## Configuration Signature Check

- 2018-02-21 - Industrial HiVision

As of v6.0 IHV is able to monitor the configuration signature of a device (Platform4, Platform5, EAGLE)

Therefor the signature is stored in a property.

The standard polling/status configuration can be used for comparing the configuration signature to the reference signature.

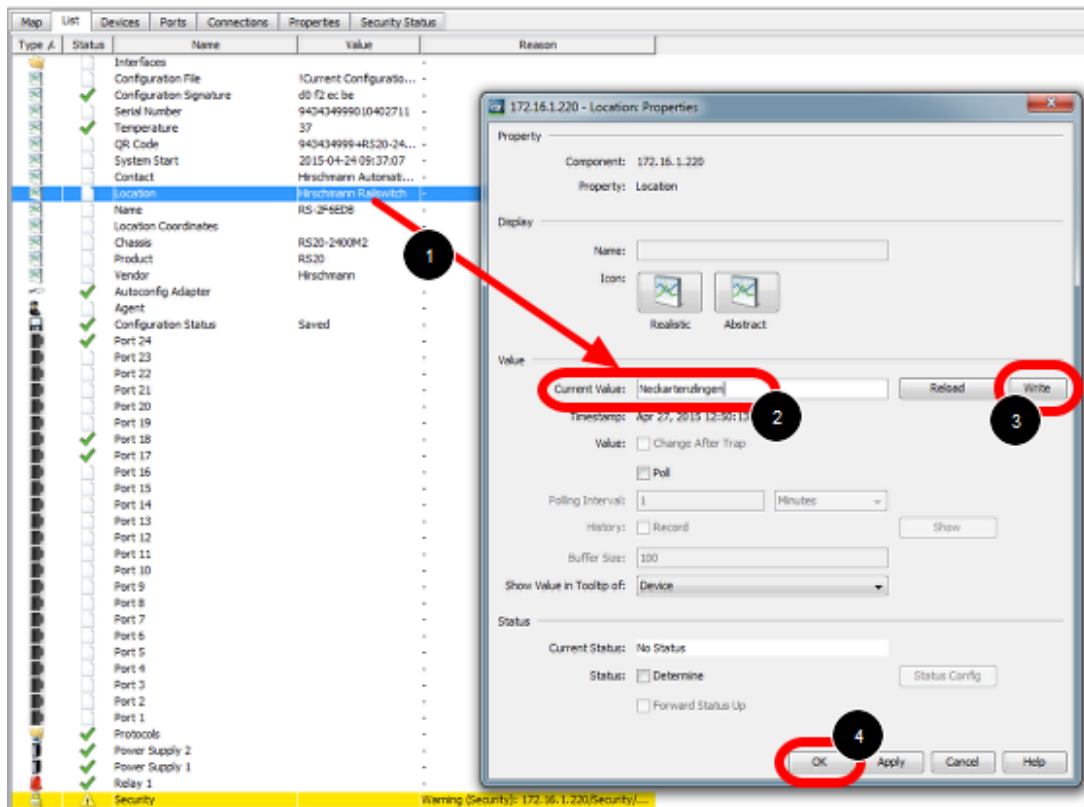
This lesson describes how to set a reference value of the configuration signature and how differences are displayed.

### **Configuration Signature Properties**



1. double click on the property **Configuration Signature**
2. press reload to download the current configuration signature from the device
3. tick check box **Determine Status**
4. open the status configuration
5. set the current value as reference value

## Change the configuration



Change the device configuration e.g. the device location:

1. double click the property location
2. change the current value
3. press write
4. close the dialog with ok

## MultiConfig







1. right click the device on which you just changed the location property
2. select MultiConfig from the context menu

### Save the configuration



Save the configuration by pressing Write in the Load/Save dialog

### Configuration Signature - Status Impairment

