

## How to configure a Radius Profile on the WLC and include it in Logical settings

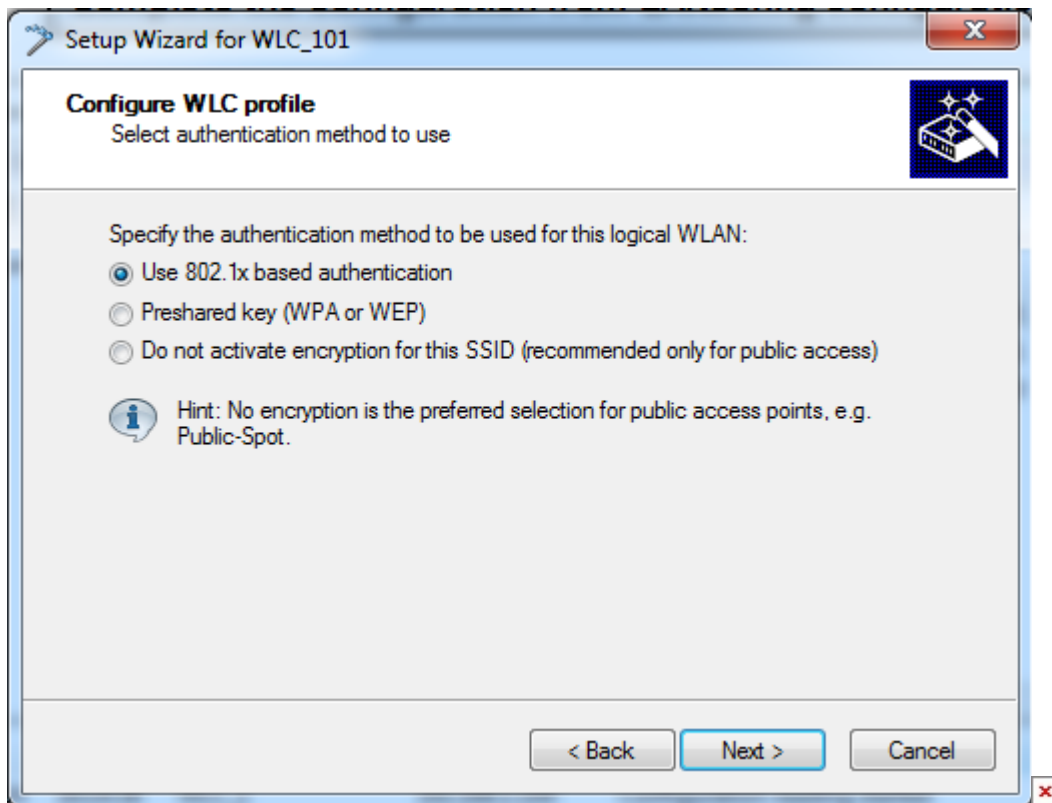
- 2018-02-21 - BAT, WLC (HiLCOS)

Creating a profile on the WLC using the Wizard, we can select ""802.1x"" as authentication method to access a network.

Nevertheless the additional settings to authenticate the 802.1x clients on a radius server aren't configurable via the Wizard.

Few additional steps are required.

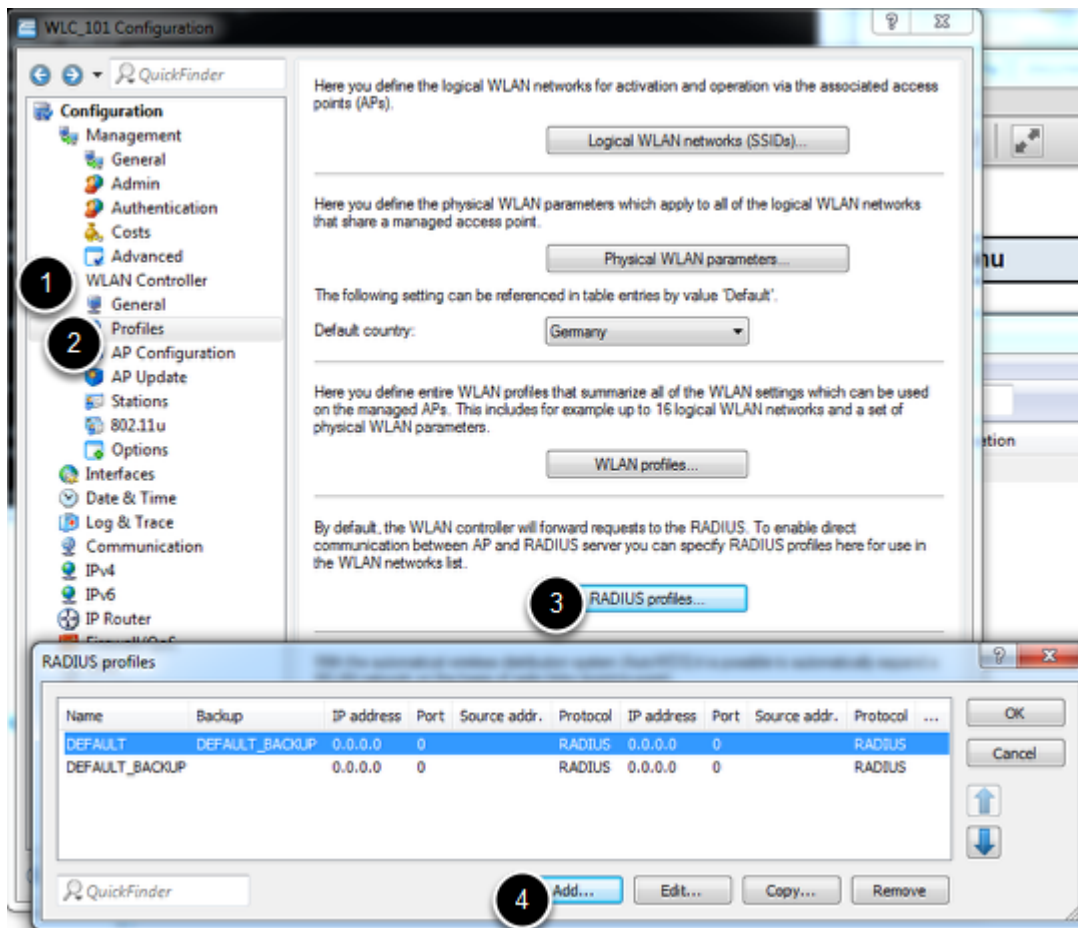
### **Create a profile on the WLC selecting 802.1x as authentication method**



To create a profile on the WLC refer to the lesson "How to create a profile on a WLC and apply it on BAT Access Points".

In this lesson, Preshared Key is used as authentication method. Instead of that, when you reach the step "authentication method" select "802.1x" (see above).

### **Create a Radius Profile**



When the Wizard is finished, from LANconfig add a radius profile on the WLC.

The RADIUS profile will later be integrated into logical settings (logical settings are part of a general profile).

When this profile will be applied on AP, the AP will act as authenticators and will use the RADIUS settings defined in the RADIUS profile.

From LANconfig main Window, double clic on the WLC or right clic > Configure  
A new configuration Window specific for the WLC opens.

From this window selct:

Configuration > WLAN Controller > Profiles > RADIUS profiles > Add

## Enter the RADIUS Server settings







1/ Give a name to the profile. In our example ""MY\_RADIUS\_SERVER""

2/ Enter the IP address of the RADIUS Server. The RADIUS server can be the controller itself.

In this case enter the IP address of the controller

3/ The port by default is 1812

4/ Enter here the shared secret. The shared secret is used by the authenticators to access the RADIUS server (it also has to be configured on the RADIUS server)

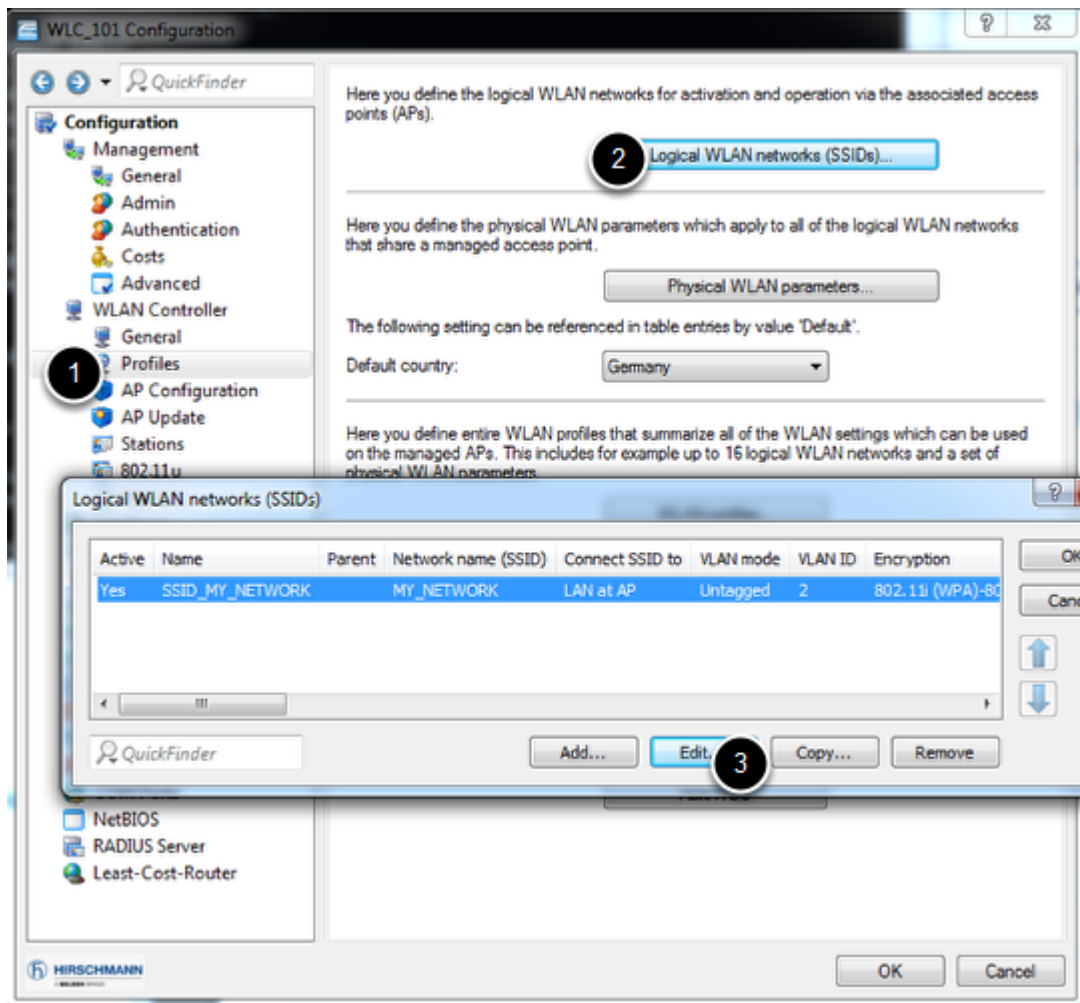
5/ Optionnally configure an accounting server

6/ 1813 is the port used by default

**Edit the logical settings you want to apply the RADIUS profile to**







Configuration > WLAN Controller > Profiles > Logical WLAN networks (SSIDs)

Select the Logical network you want to apply the RADIUS profile to (in our example ""SSID\_MY\_NETWORK"")

Select Edit

**Add the RADIUS Profile into the settings**



Logical WLAN networks (SSIDs) - Edit Entry

Logical WLAN network activated

Name: SSID\_MY\_NETWORK

Inheritance

Inherit from entry:

Network name (SSID): MY\_NETWORK

Connect SSID to: LAN at AP

VLAN mode: Untagged

VLAN ID: 2

Encryption: 802.11i (WPA)-802.11i

Key 1/passphrase:   Show

**RADIUS profile: MY\_RADIUS\_SERV**

Allowed frequency bands: 2.4/5 GHz

AP standalone time: 0 minutes

802.11u network profile:

OKC (Opportunistic Key Caching) activated

MAC check activated

Suppress SSID broadcast: No

RADIUS accounting activated

Allow data traffic between stations of this SSID

WPA version: WPA2

WPA1 session key type: TKIP

WPA2 session key type: AES

WPA2 key management: Standard

Basis rate: 2 Mbit/s

Client Bridge Support: No

TX bandwidth limit: 0 kbit/s

RX bandwidth limit: 0 kbit/s

Maximum count of clients: 0

Min. client signal strength: 0 %

Use long preamble for 802.11b

(U-)APSD / WMM powersave activated

Encrypt mgmt. frames: No

802.11n

Max. spatial streams: Auto

Allow short guard interval

Use frame aggregation

STBC (Space Time Block Coding) activated

LDPC (Low Density Parity Check) activated



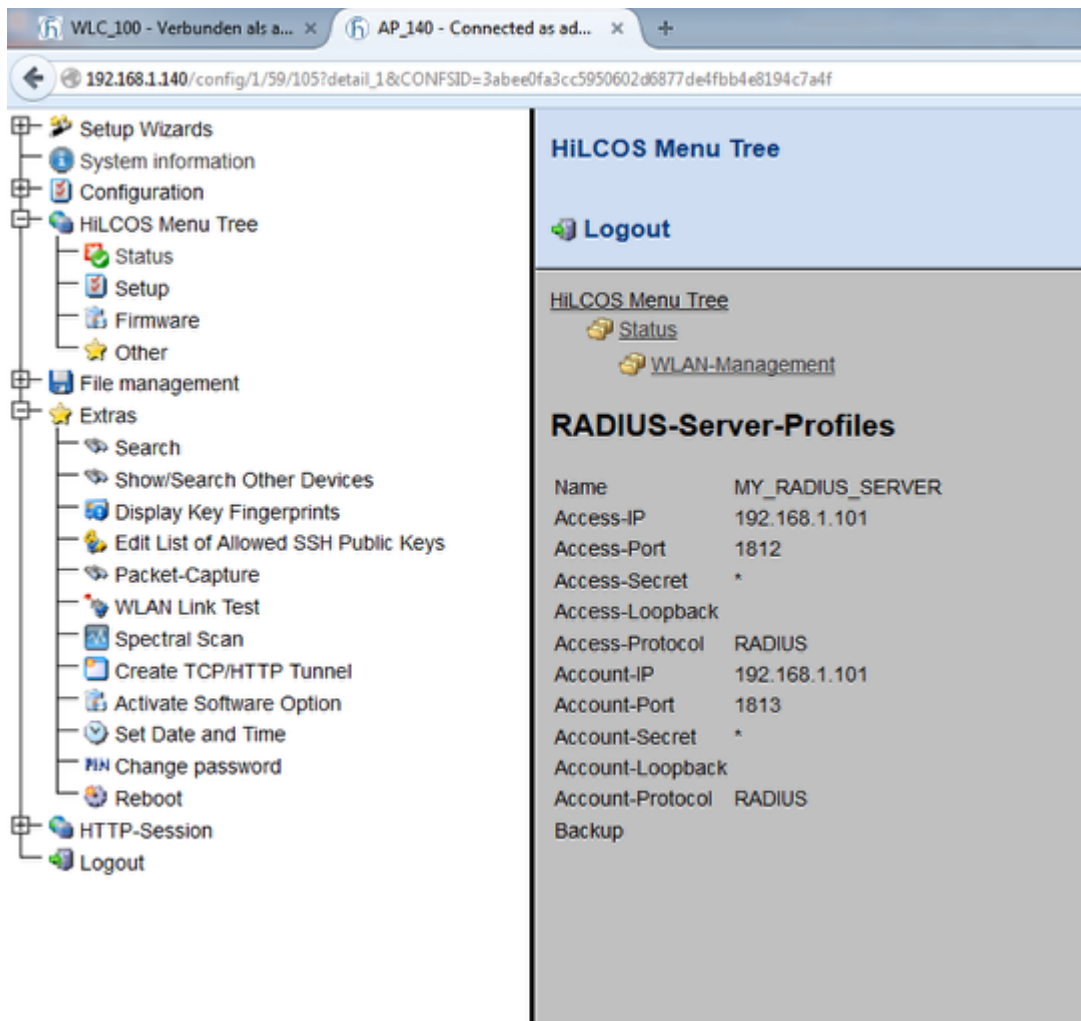
That's it.

Applying the profile into the Access Points, radius profile will be taken in account by the APs which will become autenticators for the specified RADIUS server.

NB: If the profile was already existing with another Autentication method, modification of the Encryption can be done in this Window (select 802.1x as encryption method)

**Check it**





Connecting to the AP you can check via the web dialog that the RADIUS Profile is taken in account under:

HiLCOS Menu Tree > Status > WLAN Management > RADIUS-Server-Profiles

Conteúdo relacionado

- [How to use an Open BAT or WLC as a RADIUS server and set up user accounts](#)