

How to configure an Open BAT as an 802.1x supplicant

- 2022-01-10 - BAT, WLC (HiLCOS)

This lesson describes how to configure an Open BAT as a 802.1x Supplicant.

You may need to refer to the following lessons for a complete working 802.1x environment (Supplicant - Authenticator - Server):

Environment without controller:

- How to use an Open BAT or a Controller as RADIUS Server and set up User accounts
- How to configure an Open BAT as 802.1x authenticator

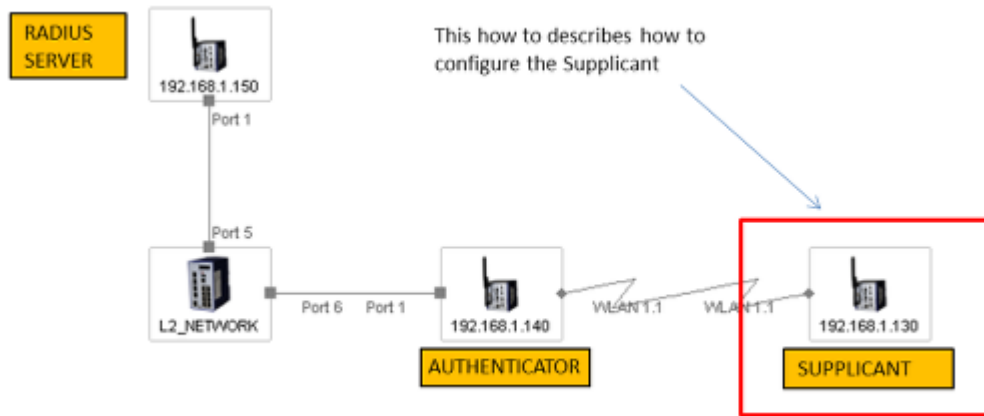
Environment with controller to manage the APs:

- How to use an Open BAT or a Controller as RADIUS Server and set up User accounts
- How to create a profile on a WLC and apply it on BAT Access points
- How to configure a Radius Profile on the WLC and include it in Logical settings

These How to are complementary and use the following settings for the radius authentication:

EAP - PEAP with MSCHAPv2 as tunnel method.

Representation



Preliminary steps

Give the BAT an IP address (in our example: 192.168.1.130)

You can refer to the lesson ""How to give an Open BAT or a WLC an IP address""

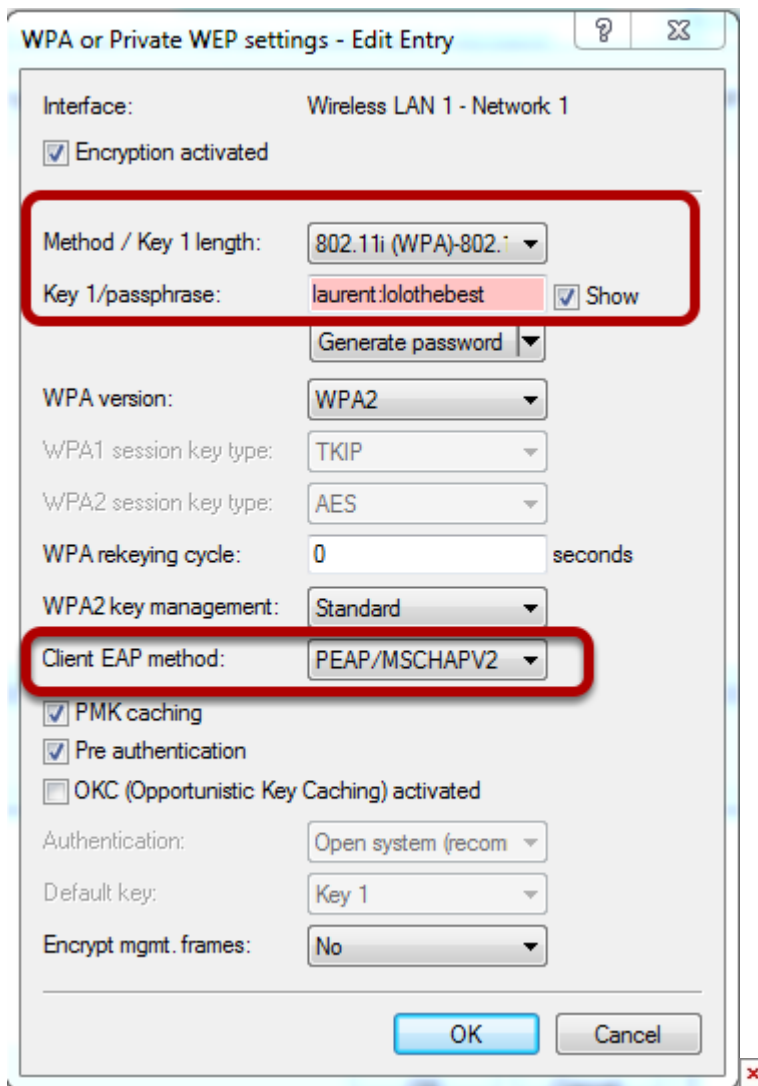
Add the BAT in LANconfig

You can refer to the lesson ""How to discover a BAT or a WLC in LANconfig""

Configure the BAT as an Access Client

You can refer to the lesson ""How to configure an Open BAT as Access Client"" but refer to this lesson for the security settings.

Security settings



As method, select 802.11i (WPA)-802.1x

For the key enter : ""user"":""password"" as defined in the radius server.

In our example user: laurent and password: lolothebest. So the key to enter is:
laurent:lolothebest (see screenshot)

Select PEAP/MSCHAPV2 as client EAP method

Conteúdo relacionado

- [How to use an Open BAT or WLC as a RADIUS server and set up user accounts](#)