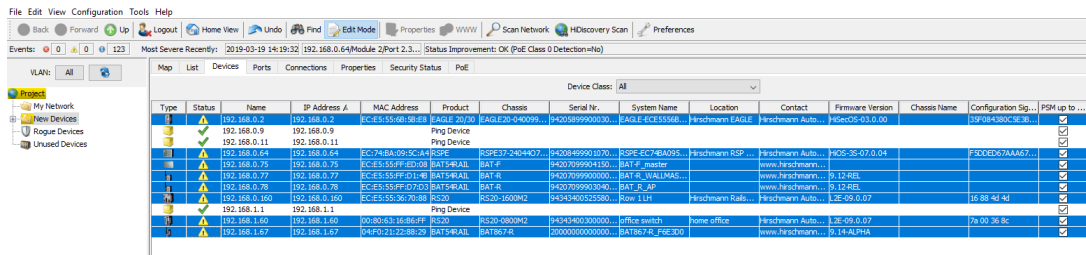


Industrial Hivision Scheduler - Save Device Configurations

John M - 2019-12-23 - Industrial HiVision

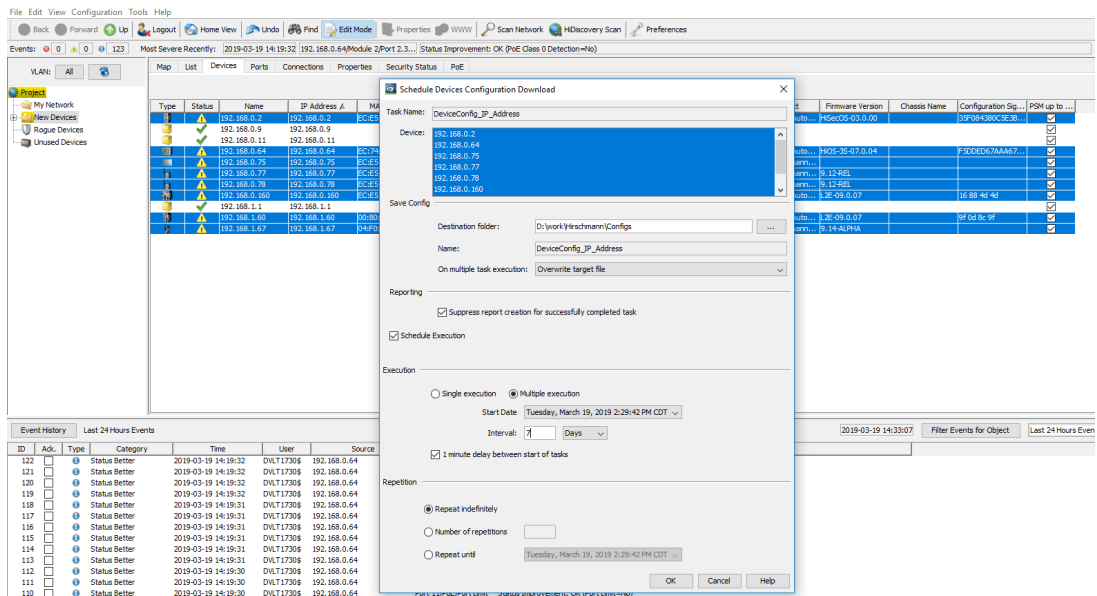
This guide is designed to walk through the steps to configure Hirschmann Industrial HiVision to enable the scheduled remote backup of Configurations of the Hirschmann devices in a project.

1. Once Hivision is running go to the Device tab and highlight the devices that need the configurations saved, right click on one of the highlighted devices and select Save Device Configuration.

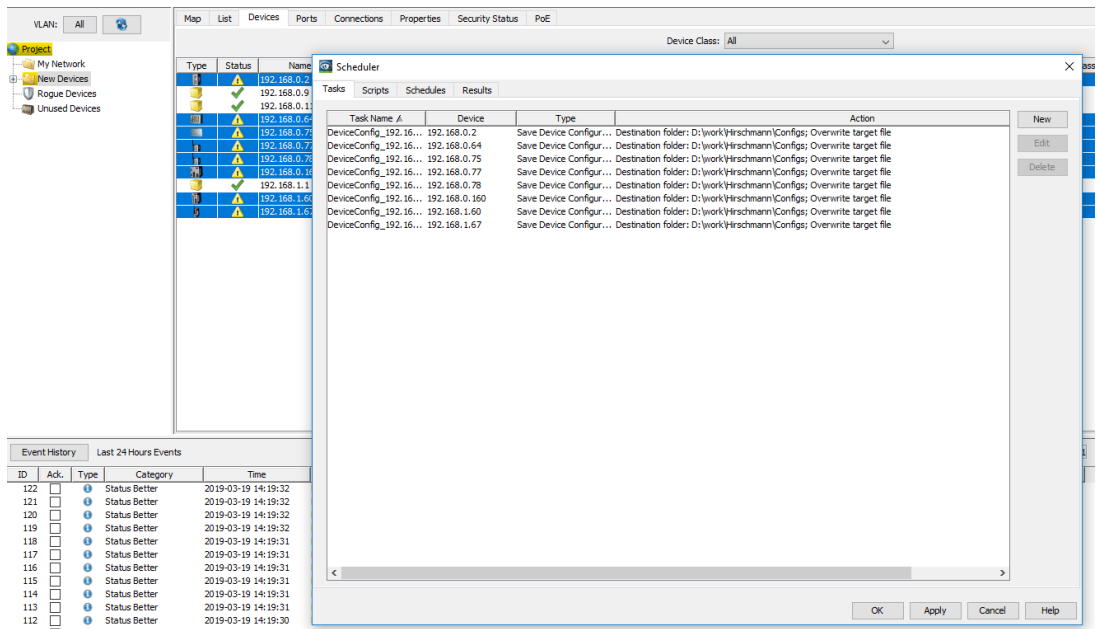


Type	Status	Name	IP Address /	MAC Address	Product	Chassis	Serial Nr.	System Name	Location	Contact	Firmware Version	Chassis Name	Configuration Sig...	PSM up to ...
			192.168.0.2	EC-E5:55:48:98:68	EAGLE 20/20	EAGLE20-940099...	94205899900030...	EAGLE-ECE55568...	Hirschmann EAGLE	Hirschmann Auto...	16Sec05:03:00:00		33F08439C9E38...	
			192.168.0.9	192.168.0.9										
			192.168.0.11	192.168.0.11										
			192.168.0.14	192.168.0.14										
			192.168.0.75	192.168.0.75	EC-E5:55FF:ED:08	BAT548-ALL	RSPE377404407	94207999901070...	RSPE-EC74BA295...	Hirschmann SSP	Hirschmann Auto...	16Sec35:07:0:04	FDCEDE57AAA67...	
			192.168.0.77	192.168.0.77	EC-E5:55FF:DD:4B	BAT548-ALL	BAT#	94207999904150...	BAT#_master	www.hirschmann...				
			192.168.0.78	192.168.0.78	EC-E5:55FF:DD:33	BAT548-ALL	BAT#	94207999903040...	BAT#_WALLMAS...	www.hirschmann...				
			192.168.0.150	192.168.0.150	EC-E5:55:36:70:88	RS20	RS20-1009M2	94343400525580...	BAT#_RS	www.hirschmann...				
			192.168.1.1	192.168.1.1					Hirschmann Rails	Hirschmann Auto...	16Sec05:07:00:00		16 88 4d 4d	
			192.168.1.1	192.168.1.1										
			192.168.1.50	192.168.1.50	00:80:53:16:9E:4F	RS20	RS20-0809M2	94343400300000...	office switch	Hirschmann Auto...	16Sec05:07:00:00		78 09 36 8c	
			192.168.1.67	192.168.1.67	04FD:21:22:88:29	BAT548-ALL	BAT#674	20000000000000...	BAT#674_F5E300	www.hirschmann...				

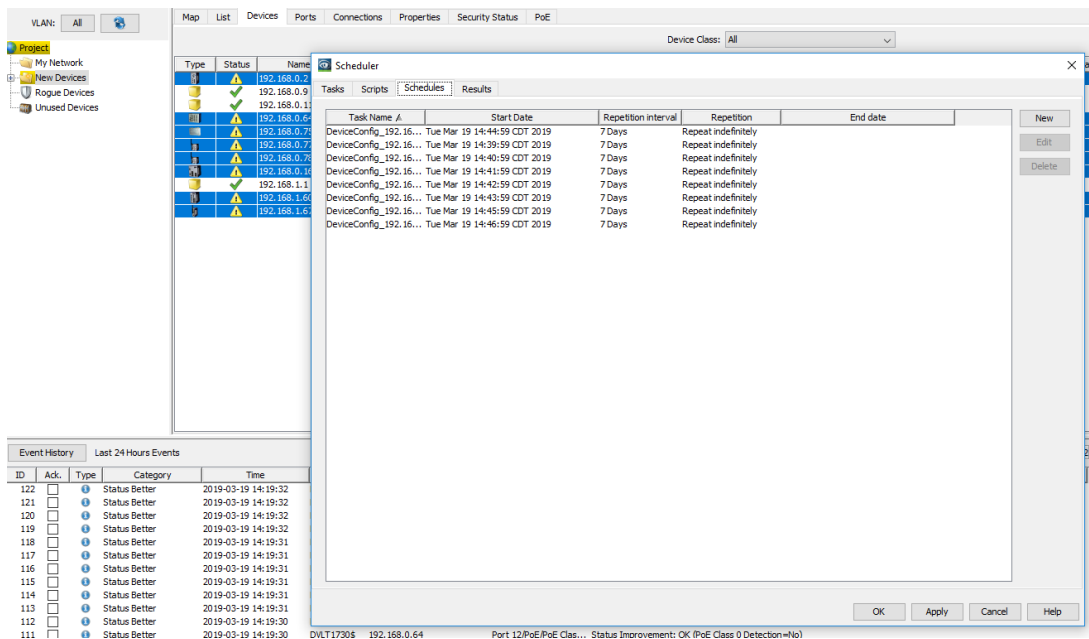
2. Browse to the location the configurations need to be saved to, set the start time (making sure to leave enough time to finish the schedule before it starts), and frequency the configurations need to be saved. Then make sure all of the other settings are selected properly and click OK.



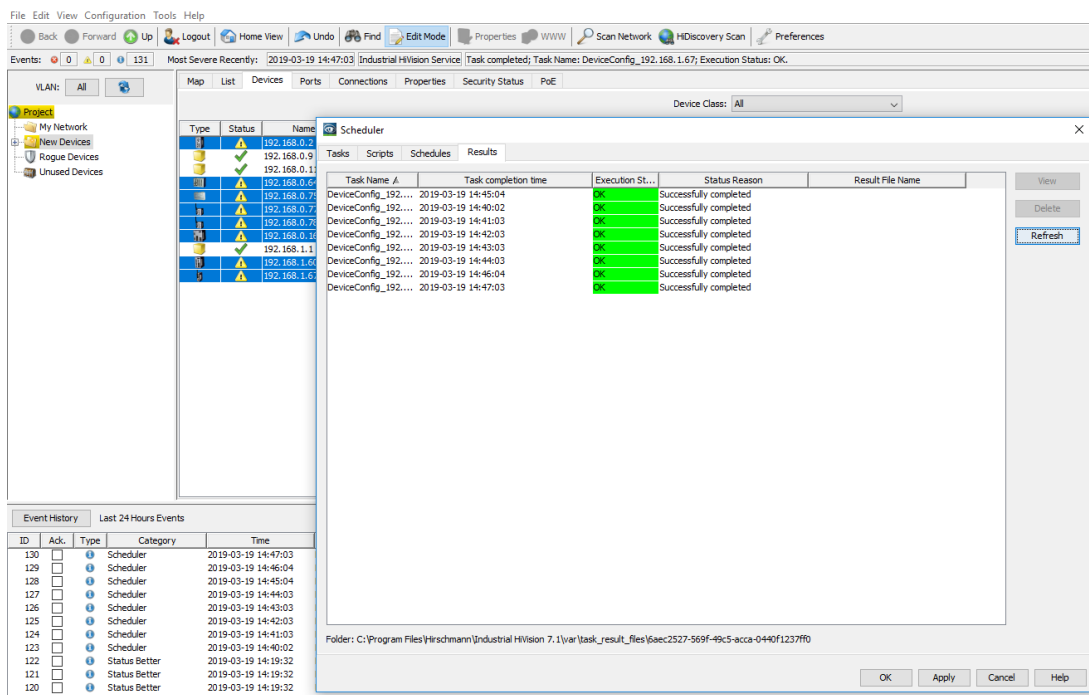
3. To verify it has been scheduled click on Configuration in the taskbar and select Scheduler, the task tab will show the devices and the task to be performed



4. The schedules tab will show the schedule to perform the tasks.



5. To verify the tasks have been completed click on the results tab.



6. Finally verify the configurations have been saved to the correct location.

