

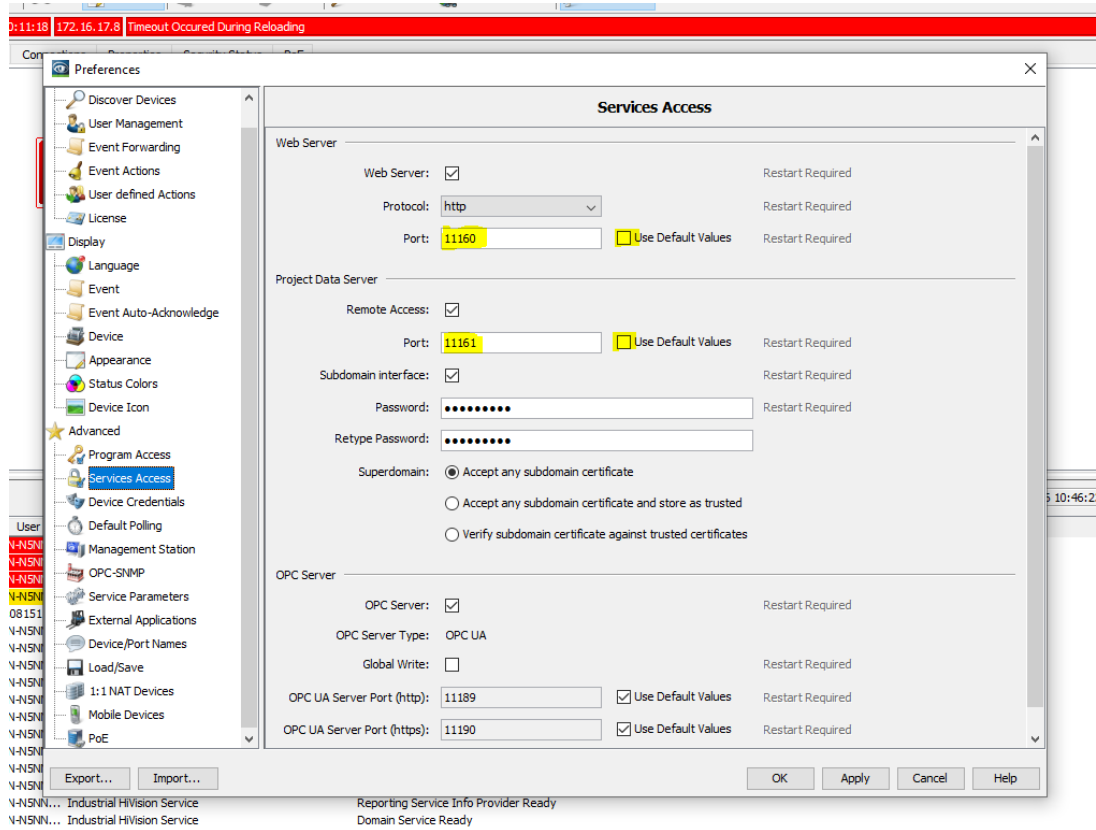
Remote Access with HiView with changed web server and remote access port

Christoph Strauss - 2022-05-16 - Industrial HiVision

Applies to Industrial HiVision 08.2.00, 08.1.04 or newer

If you change the default ports of the web server and remote access in Industrial HiVision, then you need to specify the ports in the URL as follows.

Configuration Industrial HiVision:



URL in HiView: `http://<ip-address>:<web server port>?project-data-port=<remote access port>`

e.g. <http://172.16.17.100:11160?project-data-port=11161>

