

## Configuration File Compare

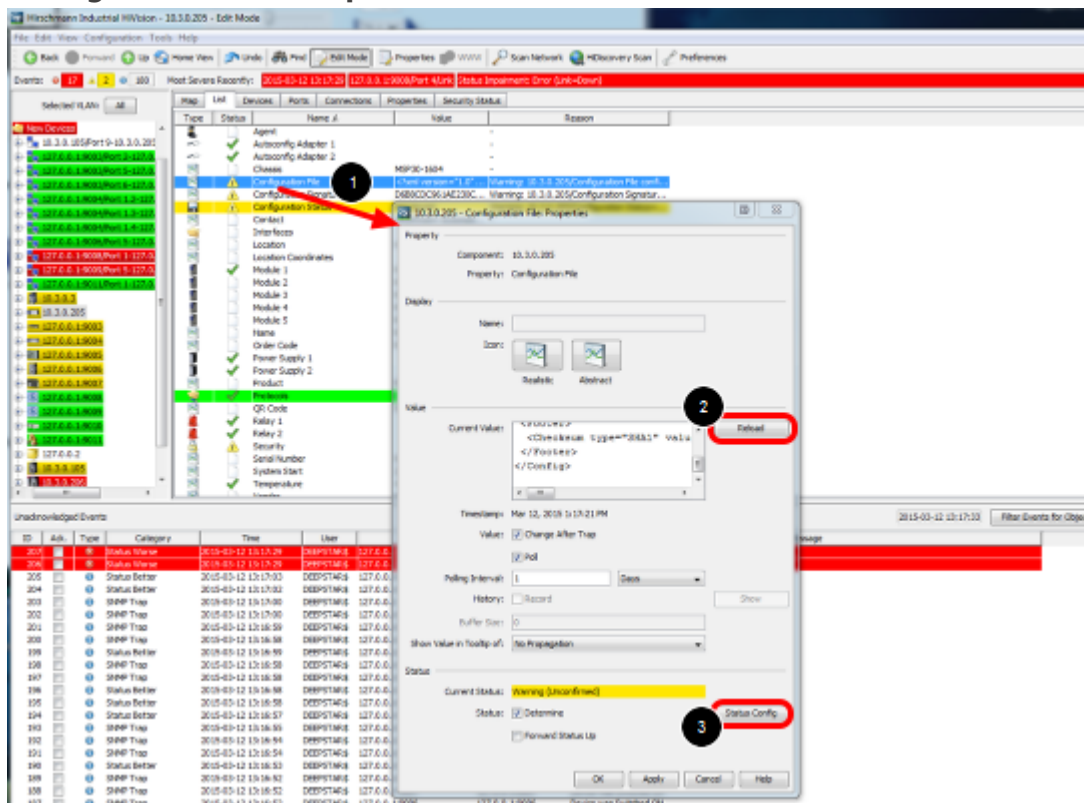
- 2018-02-21 - Industrial HiVision

As of v6.0 IHV is able to monitor the configuration file of a device (Platform4, Platform5, EAGLE, BAT and GarrettCom).

Therefore the clear text configuration (script or xml) is stored in a property. The standard polling/status configuration can be used for comparing the current configuration to the reference config.

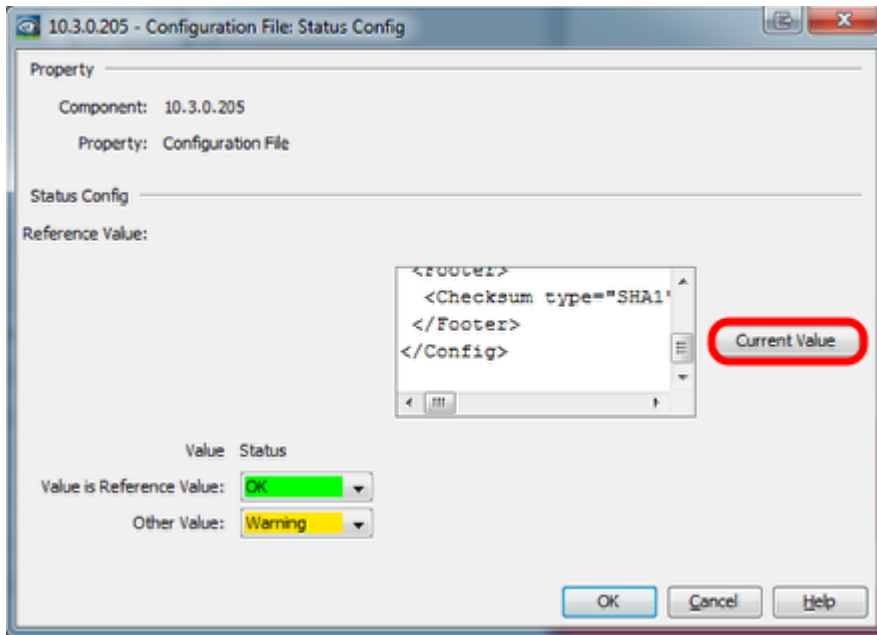
This lesson describes how to set a reference configuration and in case of configuration changes how you can display the differences.

### Configuration File Properties



1. double click on the property Configuration File
2. press reload to download the current configuration from the device
3. open the status configuration

### Configuration File - Status Config



In the status configuration dialog you can set the current value as reference value.

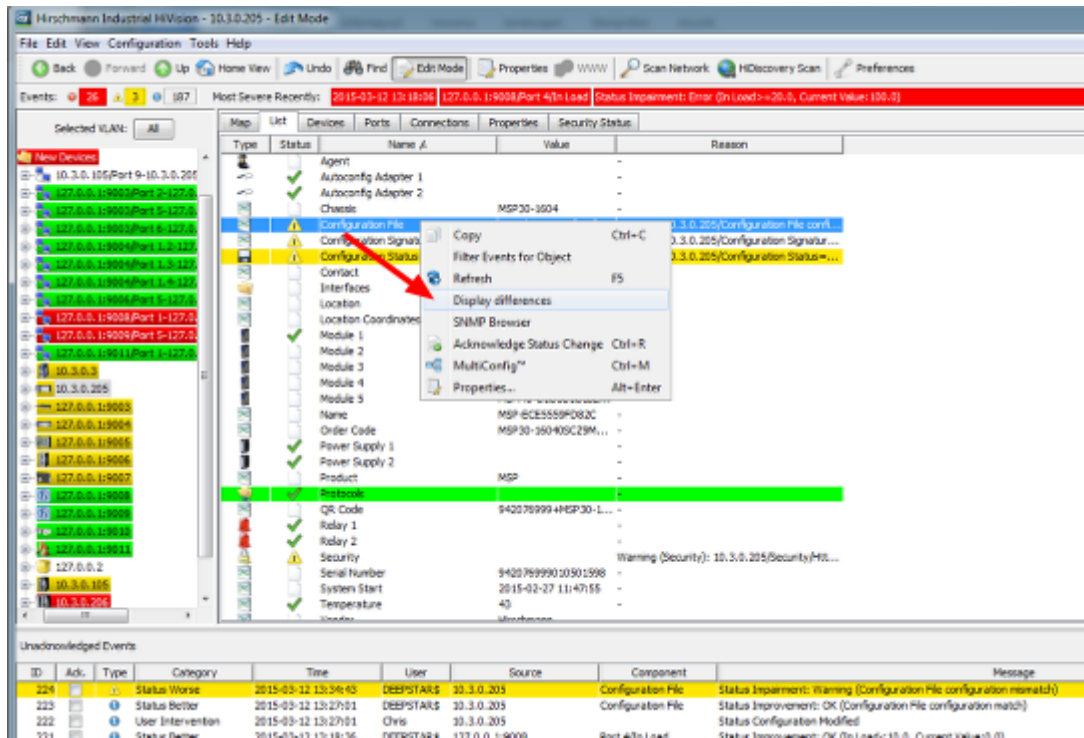
## Change the configuration

The screenshot shows the Hirschmann Industrial HiView software interface. The main window displays a tree view of devices and their properties. A red arrow points to the 'Location' property in the tree. A dialog box titled '10.3.0.205 - Location Properties' is open, showing the 'Current Value' field set to 'Hirschmann PECE' and the 'Write' button highlighted with a red circle. The dialog also shows a 'Status' section with 'Current Status' set to 'No Status' and a 'Status Config' button.

Change the device configuration e.g. the device location:

1. double click the property location
2. change the current value
3. press write

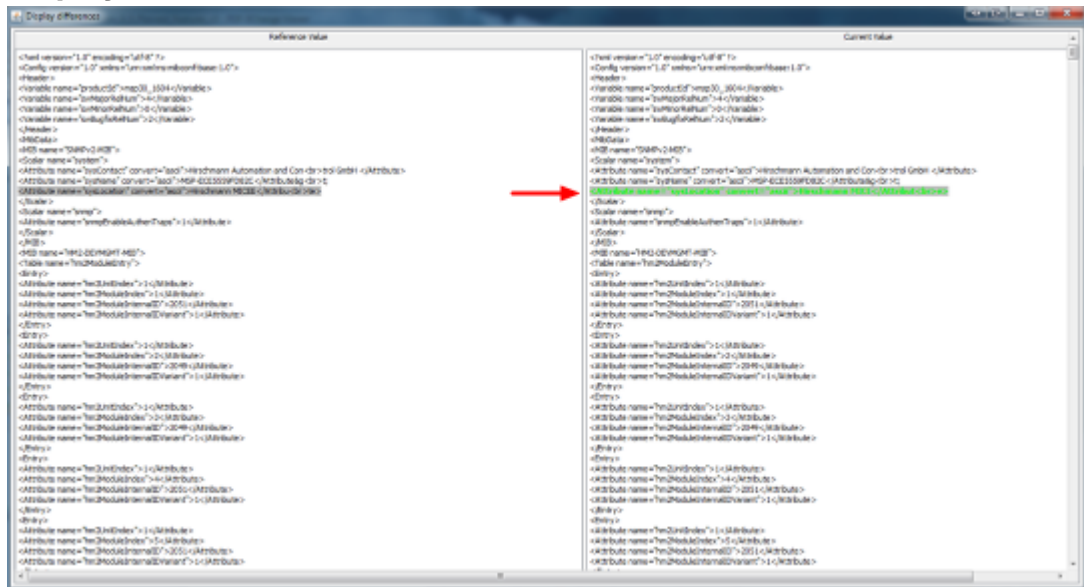
4. close the dialog with ok



Reload the Configuration File property if the change is not already detected.

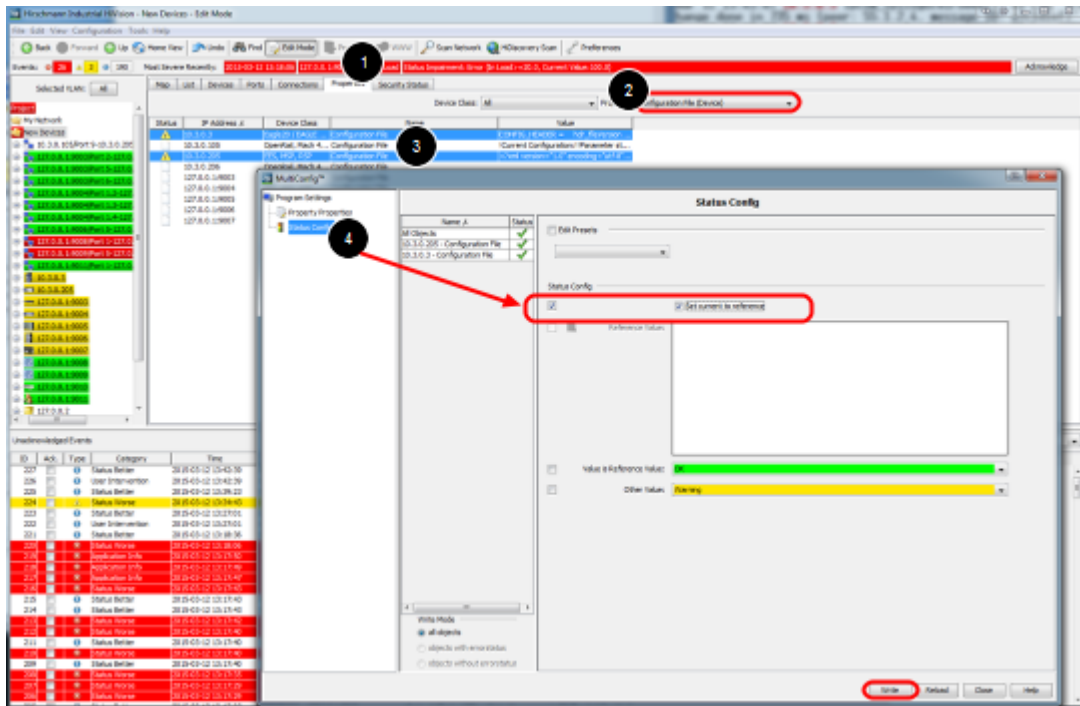
Open the context menu (right click on Configuration File) and select Display Differences

## Display Differences



A new window will open which highlights the differences between the current and the reference config.

## Set reference value per MultiConfig



1. To set the current value as reference value on multiple devices navigate to the Properties tab.
2. Select the property 'Configuration File (Device)'
3. Highlight devices and select Multiconfig from the context menu (right click)
4. Go to Status Config and tick 'Set current to reference'