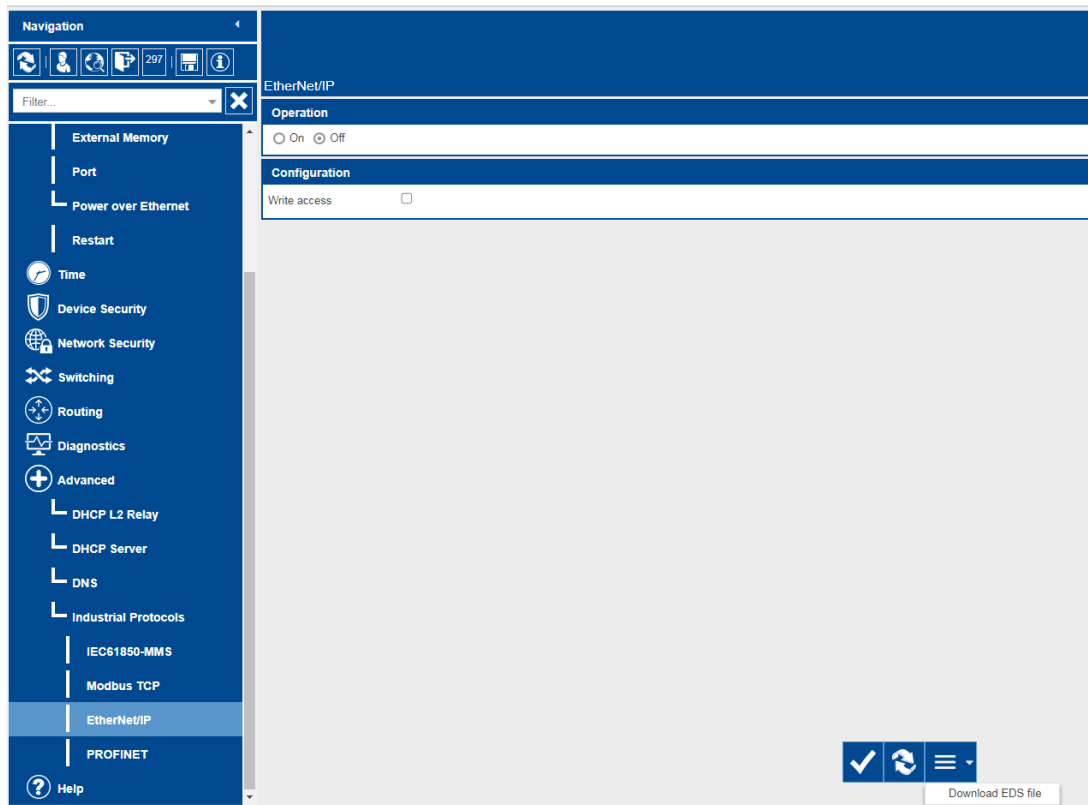


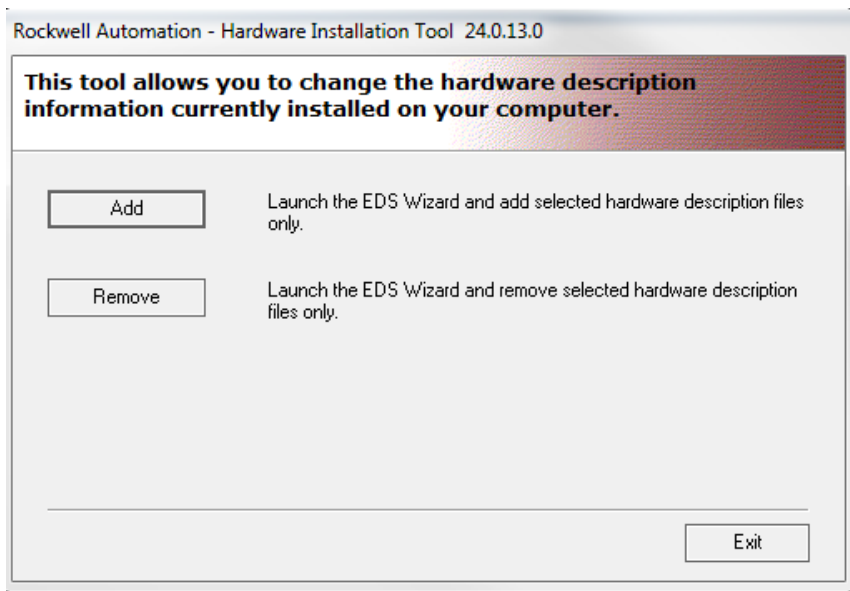
## HiOS: HTML - How to Register an EDS File for EthernetIP functionality

John M - 2019-12-23 - HiOS

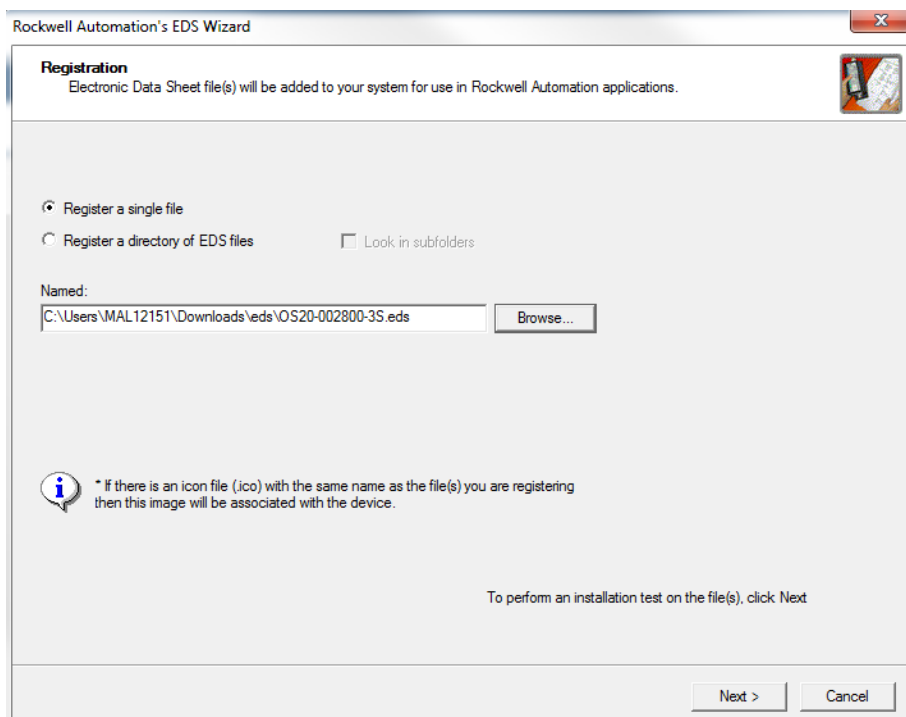
1. Log into the switch and go to the "Advanced/Industrial Protocols/Ethernet IP" menu page. Expand the 3 lines at the bottom of the page to download the EDS file. The operation will also need to be turned on.



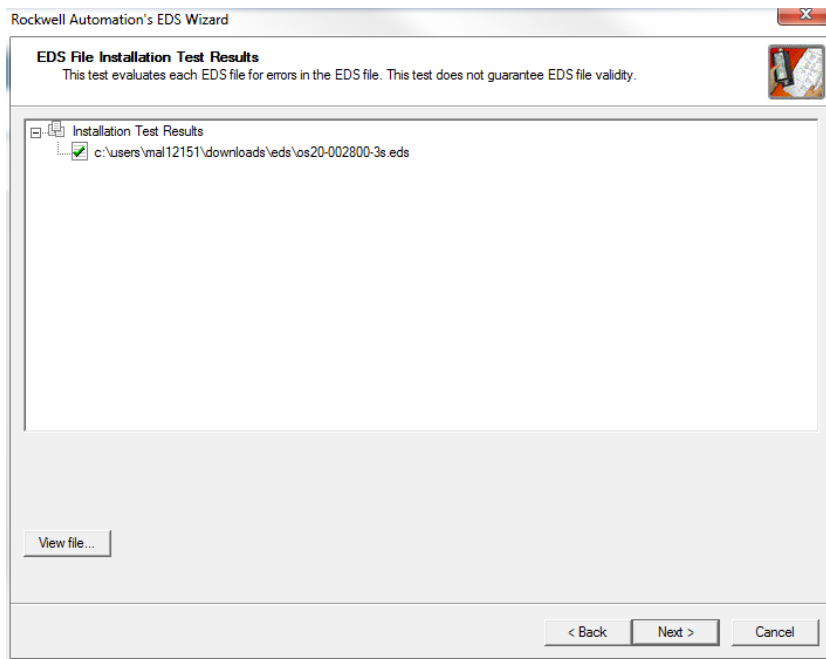
2. On your PC, go to "All programs/Rockwell software/RSlinx/tools" and select "EDS Hardware Installation Tool".



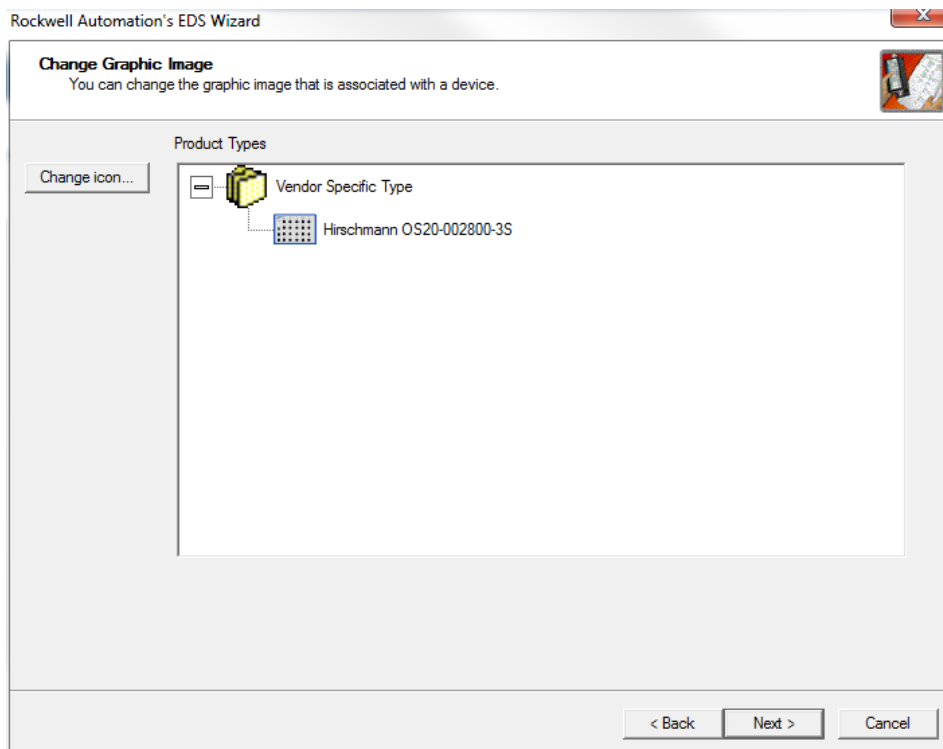
3. Click "Add" and browse to the location of the extracted EDS file and click next



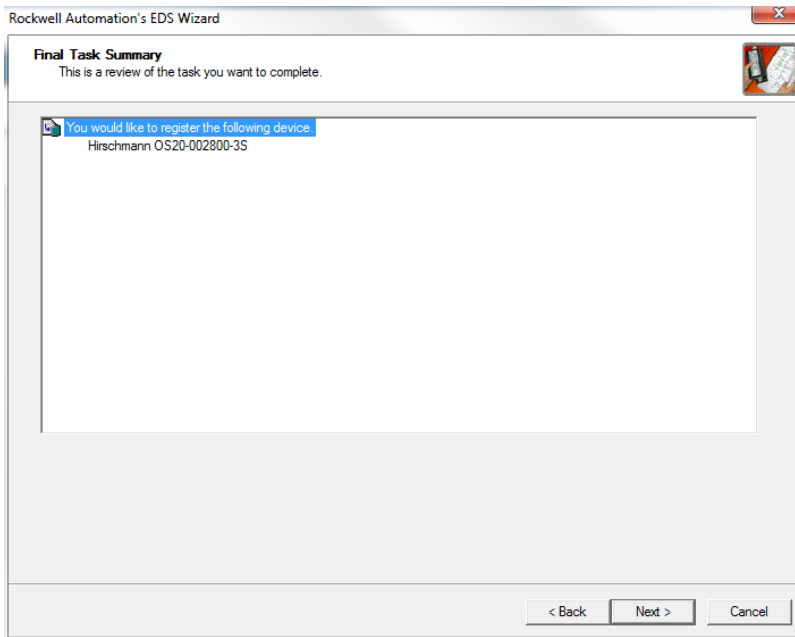
4. Verify the EDS is correct and click next



5. Verify the Icon is correct for the type of switch being registered and click next



6. Verify that is the device that needs to be registered and click next



7. Finally click finish and the EDS file is successfully registered

